

# 2014 ESPR ANNUAL MEETING

---

# PROGRAM GUIDE

---

*Philadelphia, PA ~ March 21-23*



Jointly Sponsored By: The Center for Continuing Education, Tulane University Health Sciences Center



# Eastern SP<sup>R</sup> Officers & Council

## Chairperson, Planning Committee

Sharon R. Smith, MD  
Connecticut Children's Medical Center  
Hartford, CT 06106  
Email: srsmith@connecticutchildrens.org  
Phone: (860) 545-9295

## Director of Sponsorship

Jeffrey Shenberger, MD  
Baystate Medical Center  
Springfield, MA  
Email: jeffrey.shenberger@baystatehealth.org  
Phone: (413) 794-0093

## Planning Committee

Kirsten Bechtel, MD  
Joseph Bliss, MD, PhD  
Sharon R. Smith, MD

## Nominations Committee

Heather Brumberg, MD, MPH (Chair)  
Maria Fareri Children's Hospital at Westchester  
Medical Center  
Valhalla, NY  
Email: heather\_brumberg@nymc.edu  
Phone: (914) 493-8491

## Councilors

Kate G. Ackerman, MD	2010-2014
Joseph Bliss, MD	2011-2015
Vasanth Kumar, MD	2011-2015
Jeffrey S. Shenberger, MD	2012-2016
Murli Purswani, MBChB, FAAP	2012-2016
Zubair Aghai, MD	2014-2017
Heather Brumberg, MD, MPH	2014-2017
Mark Cicero, MD	2014-2017
Steven Rogers, MD	2014-2017

## Past Presidents

2008-2011	Lawrence M. Nogee, MD
2005-2008	Bruce D. Gelb, MD
2002-2005	Luc P. Brion, MD
1999-2002	Mitchell J. Kresch, MD
1996-1999	Ira H. Gewolb, MD
1993-1996	Alan R. Fleischman, MD
1991-1993	Marc Yudkoff, MD
1989-1991	Joseph B. Warshaw, MD
1988-1989	Laurence Finberg, MD

## President 2011-2014

Vineet Bhandari, MD, DM  
Yale University School of Medicine  
New Haven, CT  
Email: vineet.bhandari@yale.edu  
Phone: (203) 785-2613

## Secretary 2011-2016

Michael Posencheg, MD  
Division of Neonatology and Newborn Services  
Hospital of the University of Pennsylvania  
Philadelphia, PA  
Email: posencheg@email.chop.edu  
Phone: (215) 615 - 4376

## Treasurer 2011-2016

Jason Z. Stoller, MD  
Children's Hospital of Philadelphia  
Philadelphia, PA  
Email: stoller@email.chop.edu  
Phone: (215) 590-4393

# Contents

	Page
Author Index	27
Faculty	4
Friday Programming	6-8
Hotel Maps	inside back cover
Meeting Services & CME Accreditation	4
Note Pages	28
Press Guidelines	3
Recognition of New Members	2
Saturday Programming	8-21
Schedule-at-a-Glance	5
Sponsorship Honor Roll	1
Sunday Programming	21-26

# Sponsorship Honor Roll

The ESPR would like to express appreciation to the following companies for their support:

## Corporate Sponsors

Abbott Nutrition  
Cornerstone Therapeutics Inc.  
Mead Johnson Nutrition

## Display Tables

Abbott Nutrition  
Cornerstone Therapeutics  
COSMED, USA, Inc.  
Ikaria  
Medimmune  
Nutricia North America  
ONY, Inc.  
Pediatrix Medical Group

Support our exhibitors by visiting their booths.

Friday	6:00 pm - 7:30 pm
Saturday	7:00 am - 8:00 am 9:30 am - 9:45 am 3:00 pm - 3:15 pm 6:00 pm - 7:30 pm
Sunday	7:30 am - 9:00 am 10:15 am - 10:30 am

## Academic Sponsors

Baystate Children's Hospital  
Lindsey Grossman, MD  
Springfield, MA

Children's Hospital at Montefiore  
Judy Aschner, MD  
Bronx, NY

Maria Fareri Children's Hospital at Westchester  
Leonard Newman, MD, FAAP  
Valhalla, NY

Mount Sinai School of Medicine  
Lisa Satlin, MD  
New York, NY

Stony Brook University School of Medicine  
Margaret M. McGovern, MD, PhD  
Stony Brook, NY

The Division of Neonatology & Newborn Services  
Children's Hospital of Philadelphia  
Philadelphia, PA

Tufts Medical Center  
John Schreiber, MD  
Boston, MA

University at Buffalo  
Teresa Quattrin, MD  
Buffalo, NY

University of Rochester Medical Center  
Nina F. Schor, MD, PhD  
Rochester, NY

Women & Infants Hospital of Rhode Island  
James Padbury, MD  
Providence, RI

Yale University School of Medicine  
George Lister, MD  
New Haven, CT



Dear Colleagues,

**Welcome to the 26th Annual Meeting of the Eastern Society for Pediatric Research (ESPR) and to our host city of Philadelphia, the Cradle of Liberty!**

The Eastern Society for Pediatric Research Council and Planning Committee are confident that you will enjoy our exciting program. Highlights include State-of-the-Art Plenary Talks and the highly popular Fellow's Clinical Case Presentation Competition. High-quality original research is presented in sub-specialty platform sessions with leading clinical and scientific authorities moderating the presentations and in four poster sessions.

The goals of the Eastern SPR Annual Meeting are to create a forum where: i) young investigators can present their research in a structured yet relaxed atmosphere, ii) regional clinicians can be exposed to cutting edge clinical and basic science, iii) timely educational programs addressing important topics in Pediatrics are presented and iv) trainees are able to interact with senior investigators and clinicians in an informal setting.

The continued success of our previous meetings has enabled an entirely web-based system for membership, registration and payments, in making timely announcements, in enhanced room booking services, and for the improvement in the overall ease of running the meeting. In addition, we again have centralized informatics enabling presenters to load their slide-show in advance at a speaker-ready station.

**ACKNOWLEDGEMENTS:** The organization of this meeting would not have been possible without the help of the administrative offices of the American Pediatric Society (APS) and the Society for Pediatric Research (SPR). We are especially grateful to: Debbie Anagnostelis (Executive Director), Belinda Thomas, Jesse Osman and Lisa Thompson. We also recognize the energetic efforts of the Eastern SPR Planning Committee and Council Members for their guidance and vision in selecting this new venue and the efforts of Tulane University in New Orleans as our 2014 sponsor for the CME program. In addition, we thank various members of the regional pediatric community for reviewing the submitted abstracts and for moderating our platform sessions. Lastly, our corporate and leading academic sponsors were instrumental in making this meeting possible.

Most of all, we want to thank you for attending and for contributing your wisdom and experience in the pursuit of excellence. We hope that you enjoy and profit from the meeting, and look forward to your continued participation in future meetings!

*Vineet Bhandari*

Vineet Bhandari, MD, DM  
President

*Michael Posencheg*

Michael Posencheg, MD  
Secretary

*Sharon Smith*

Sharon Smith, MD  
Chair, Planning Committee





## THE EASTERN SOCIETY FOR PEDIATRIC RESEARCH

### RECOGNITION OF NEW MEMBERS

The Council of the Eastern Society for Pediatric Research would like to recognize the following new members who have joined the society within the last year.

Membership in the Society reflects not only peer recognition of research achievements in pediatrics, but continuing commitment to pediatric research and fostering the career development the next generation of pediatric researchers. The Council and Society members welcome active participation in the organization. Like our parent organization, the Eastern SPR seeks to promote the generation of new knowledge, the professional growth of the current and next generation of academic pediatricians, and the translation of research discoveries into treatments that will benefit children worldwide. We believe that membership and active participation in the Eastern Society for Pediatric Research can meaningfully contribute to professional success as an academic pediatrician.

To celebrate this achievement, new members will be recognized at the Opening Reception on Friday, March 21, 2014. Once again, congratulations and welcome to the Eastern Society for Pediatric Research.

Judy Aschner, M.D., The Children's Hospital at Montefiore  
Mark Cicero, M.D., Yale University School of Medicine  
Aracelis Fernandez, M.D., Montefiore Medical Center  
Melissa Langhan, M.D., Yale University School of Medicine  
Beatrice Lechner, M.D., Women & Infants Hospital of Rhode Island  
Jayashree Ramasethu, M.D., MedStar Georgetown University Hospital  
Sara Slovin, M.D., Nemours/A.I. duPont Hospital for Children  
Adam Spanier, M.D., Penn State College of Medicine  
Gunjan Tiyyagura, M.D., Yale University School of Medicine

#### ***Abstracts can be viewed at :***

**Friday: <https://www.aps-spr.org/ESPR/abstracts/friday.pdf>**

**Saturday: <https://www.aps-spr.org/ESPR/abstracts/saturday.pdf>**

**Sunday: <https://www.aps-spr.org/ESPR/abstracts/sunday.pdf>**

#### **AAP CREDITS**

This continuing medical education activity has been reviewed by the American Academy of Pediatrics and is acceptable for a maximum of **11.25** AAP credits. These credits can be applied toward the AAP CME/CPD Award available to Fellows and Candidate Members of the American Academy of Pediatrics.

#### **Process for Attendees to Receive AAP Credit:**

AAP Credit for attendees is recorded only when an attendee submits a copy of his/her certificate of attendance (pick up at the registration desk), **with AAP ID number**, to the American Academy of Pediatrics. The address to mail the certificate is:

American Academy of Pediatrics, Attn: Transcript Coordinator  
141 Northwest Point Blvd., Elk Grove, IL 60007-1098  
Fax: 847-434-8387





# 2014 ESPR Press Guidelines

---

Thank you for your interest in covering pediatric topics offered at the annual meeting of the Eastern Society for Pediatric Research (ESPR). The annual meeting is a private meeting of the ESPR. The granting of media credentials for the meeting is at the sole discretion of the ESPR program committee.

Please note the following ESPR Press guidelines and media credentialing policies for the meeting.

## **Press Badges**

Only individuals who are working for and representing a recognized news organization may register as press. To receive a press badge, working journalists must provide identification such as a business card, letter of assignment and published samples of bylined work, preferably stories relating to pediatric health. All freelance journalists must provide a letter of assignment on company letterhead from an editor of a recognized news organization certifying you are covering the ESPR annual meeting for the organization. Press badges are available only to working journalists who can show evidence that their attendance will result in coverage of the ESPR meeting. You may register at the ESPR Registration Desk at the Doubletree Hilton Philadelphia beginning Friday, March 21 at 4:00 pm.

Based on space requirements, ESPR retains the right to limit the number of press badges issued to a single media organization. ESPR does not issue press badges to: publishers or a publication's advertising, marketing, public relations or sales representatives; publishers, editors or reporters from manufacturers' house organs or promotional publications; public relations staff of exhibitors or educational institutions; or other individuals or their representatives who are not actually reporting on the meeting. Any Press badge holder who sells, markets or represents a company or organization for the purpose of obtaining advertising or subscriptions from any meeting registrant or exhibitor immediately forfeits press credentials.

A press badge allows media to attend all ESPR sessions being held during the dates of March 21 – 23, 2014. It must be worn at all times and obtained before attending and session. A press badge is not to be shared.

Registration fees for working press are waived. ESPR considers working press to be editorial staff of newspapers or magazines, medical or health care publications and broadcast or Web-based media.

## **Photography and Video**

Television crews, documentary film crews, video crews and photographers covering the meeting are required to check in immediately at the ESPR Registration Desk each day, and must be accompanied at all times by a ESPR Officer or staff member when shooting inside the hotel. Shooting schedules and on-camera interview requests must be provided in writing in advance to ensure staff availability. As a courtesy to presenters, television and video crews, photographers, and radio reporters must obtain permission from the speaker and moderator *before* recording or filming an interview. Media may not photograph or videotape an exhibit booth or other display without the permission of the exhibitor and ESPR. This includes use of camera phones, personal digital cameras and other handheld devices.

## **Scientific Papers**

In order to help maintain their eligibility for peer-reviewed journal publication, some researchers may not want to make themselves available for media interviews. Journalists who want to use slides, graphs and other visuals to illustrate coverage must have the presenter's permission.

ESPR appreciates your interest in child health issues. We hope that you have an instructive and enjoyable time at our meeting and encourage you to join us at future meetings. Please let us know if we can help you in any way.

# Meeting Services & CME Accreditation

## Registration and CME Desk Hours

Registration will be held on the 3rd floor. Registration hours are as follows:

Friday, March 21	4:00pm – 7:30pm
Saturday, March 22	6:00am – 7:30pm
Sunday, March 23	6:30am – 12:00pm

## Abstract Publication

All abstracts being presented at the 2014 Eastern SPR Annual Meeting are viewable on the ESPR homepage.

## Audio/Visual Information

All oral presentations must be made using PowerPoint. Computers and LCD projectors will be provided. Presenters that have submitted their presentations in advance, are still required to check in at Speaker Ready.

## Speaker Ready (Chamber Board Room-4th floor)

Presentations will be loaded onto a central computer prior to the session in which the presentation is to be made (i.e., Friday evening for Saturday morning presentations, Saturday morning for Saturday afternoon presentations, and Saturday afternoon for Sunday morning presentations). Please also bring your CD-ROM, ZIP drive or flash memory.

## The speaker ready room hours are as follows:

Friday, March 21	4:00pm – 7:30pm
Saturday, March 22	7:00am – 7:30pm
Sunday, March 23	7:30am – 12:00pm

## Statement Of Need

Research and technology are changing rapidly in medicine and it is important for physicians and healthcare professionals to critically evaluate the emerging developments. Physicians and healthcare professionals in pediatrics need to increase their competence in discerning which of the emerging research and technologies are applicable to their patient populations. Discussions and debates on these emerging data stimulate the development of new guidelines, appropriateness criteria and evidence-based changes in medical practice.

The ESPR annual meeting provides a forum for young investigators to share their translational and clinical research with mentors and senior investigators. This gives the junior investigators important feedback in a non-threatening environment, provides for critiques and opportunities to improve the presentation before presenting on a national stage, and fosters mentoring from senior investigators.

The senior investigators benefit from this educational format by engaging in discussions on how to translate the research into practice, debates on how the new information supports or discredits the "old" information, and assists in the design of possible new research options and extensions.

The Eastern Society for Pediatric Research Annual Meeting addresses a three-fold need:

1. Young investigators need to increase their competence and performance in presenting their research in a structured yet relaxed atmosphere.
2. Regional clinicians need to increase their competence in evaluating and designing strategies to incorporate cutting edge clinical and basic science into practice.
3. Trainees need to increase their competence and performance in establishing collaborative relationships with mentors to address the barriers which may be interfering with research development.

## Target Audience

Physicians within the pediatric specialties, internal medicine and family medicine. Non-physicians: Scientific researchers in both translational and clinical research in pediatrics. Healthcare professionals engaged with the pediatric population.

## Overview And Objectives

The overall goal of this meeting is to improve patient care by increasing learner competence in evaluating the emerging translational and clinical research in pediatrics and determining parameters for expansion and modification of promising research developments.

**Learner Objectives:** At the conclusion of this activity, participants should be better able to:

- Critically evaluate the emerging translational and clinical research.
- Discuss new developments in pathophysiology of human disease with colleagues.
- Identify new areas of investigation which will inform research and improve patient care.
- Develop optimal strategies for clinical investigation and transmission of clinical research results.
- Develop relationships with mentors and peers to address the barriers which interfere with research development.

## Predicted Outcomes

Predicted Changes in Practice as a result of participating in this activity include the ability to:

- Determine whether appropriate changes need to be recommended in patient protocols as indicated in the emerging research data.
- Implement new tools for teaching, research and medical practice.
- Apply appropriate evidence based recommendations in my research, teaching and/or medical practice.
- Present research in a national forum.
- Establish collaborations to expand or address barriers which are identified

## Accreditation:

This activity has been planned and implemented in accordance with the Essentials Areas and Policies of the Accreditation Council for Continuing Medical Education through the joint sponsorship of Tulane University Health Sciences Center and the Eastern Society for Pediatric Research. Tulane University Health Sciences Center is accredited by the Accreditation Council for Continuing Medical Education (ACCME) to provide continuing medical education for physicians.

## Designation

Tulane University Health Sciences Center designates this live activity for a maximum of **11.25 AMA PRA Category 1 Credits™**. Physicians should claim only the credit commensurate with the extent of their participation in the activity.

Tulane University Health Sciences Center presents this activity for educational purposes only and does not endorse any product, content of presentation or exhibit. Participants are expected to use their own expertise and judgment while engaged in the practice of medicine. The content of the presentations is provided solely by presenters, who have been selected because of their recognized expertise.

## Tulane Disclosure Policy

It is the policy of the Center for Continuing Education at Tulane University Health Sciences Center to plan and implement all of its educational activities in accordance with the ACCME's Essential Areas and Policies to ensure balance, independence, objectivity and scientific rigor. In accordance with the ACCME's Standards for Commercial Support, everyone who is in a position to control the content of an educational activity certified for **AMA PRA Category 1 Credit™** is required to disclose all financial relationships with any commercial interests within the past 12 months that creates a real or apparent conflict of interest. Individuals who do not disclose are disqualified from participating in a CME activity. Individuals with potential for influence or control of CME content include planners and planning committee members, authors, teachers, educational activity directors, educational partners, and others who participate, e.g. facilitators and moderators. This disclosure pertains to relationships with pharmaceutical companies, biomedical device manufacturers or other corporations whose products or services are related to the subject matter of the presentation topic. Any real or apparent conflicts of interest related to the content of the presentations must be resolved prior to the educational activity. Disclosure of off-label, experimental or investigational use of drugs or devices must also be made known to the audience.

## How To Obtain Your AMA PRA Category 1 Credits™

Tulane and the Eastern Society for Pediatric Research are now using a secure electronic format for evaluation and credit verification. The evaluation remains anonymous but the link does allow you to give us your contact information which will be incorporated into the Certificate of Credit.

At the conclusion of the conference on Sunday, you will be sent a link to an electronic evaluation and credit verification form from Tulane.edu. If you do not receive this in your inbox on Sunday afternoon, check your spam/junk mailbox. You can contact [cme@tulane.edu](mailto:cme@tulane.edu) if you did not receive it and Tulane will send you another link for claiming your credits.

You will receive your certificate of credit by Thursday, May 1, 2014. If you do not receive it by then, please notify Tulane University at [cme@tulane.edu](mailto:cme@tulane.edu).

## Faculty

Kabir Abubakar, MD  
Georgetown University Hospital  
Washington, DC

Andrew Bauer, MD  
The Children's Hospital of Philadelphia  
Philadelphia, PA

Andrew Blaufox, MD  
The Alexandra and Steven Cohen Children's  
Medical Center of New York  
New Hyde Park, NY

Mitchell Cairo, MD  
New York Medical College  
Hawthorne, NY

Deborah Campbell, MD  
Children's Hospital at Montefiore - Albert  
Einstein College of Medicine  
Bronx, NY

Alvin Chin, MD  
The Children's Hospital of Philadelphia  
Philadelphia, PA

Robyn Cohen, MD, MPH  
Boston University School of Medicine  
Boston, MA

Susan Coupey, MD  
Albert Einstein College of Medicine and  
Children's Hospital at Montefiore  
Bronx, NY

Aracelis Fernandez, MD  
Montefiore Medical Center  
Bronx, NY

Andy Glatz, MD MSCE  
Children's Hospital of Philadelphia and  
Perelman School of Medicine at the University  
of Pennsylvania  
Philadelphia, PA

Robert Green, MD  
Mount Sinai School of Medicine  
New York, NY

Victor Herson, MD  
Connecticut Children's Medical Center  
Hartford, CT

Naveed Hussain, MD  
University of Connecticut School of Medicine  
Farmington, CT

Sudha Kessler, MD  
Children's Hospital of Philadelphia  
Philadelphia, PA

Melissa Langan, MD  
Yale University School of Medicine  
New Haven, CT

Ruth Milanaik, DO  
The Alexandra and Steven Cohen Children's  
Medical Center of New York  
New Hyde Park, NY

Robert Rapaport, MD  
Mount Sinai School of Medicine  
New York, NY

Laurie Scheiner, MD  
Connecticut Children's Medical Center  
Hartford, CT

David Schutzman, MD  
Einstein Medical Center Philadelphia  
Philadelphia, PA

Rachana Singh, MD, MS  
Baystate Children's Hospital  
Springfield, MA

Hilda Slivka, MD  
Connecticut Children's Medical Center  
Hartford, CT

Adam Spanier, MD, PhD, MPH  
Penn State Hershey Medical Center  
Hershey, PA

Jesse Sturm, MD, MPH  
Connecticut Children's Medical Center  
Hartford, CT

Macdara Tynan, MD, MBA  
Connecticut Children's Medical Center  
Hartford, CT

Alfin Vicencio, MD  
Mount Sinai Medical Center Kravis Children's  
Hospital  
New York, NY

Angela Wratney, MD  
Children's National Medical Center  
Washington, DC

# Eastern SPR Schedule-at-a Glance

## Friday, March 21

**6:00pm–7:30pm**

### Poster Session I

#### Opening Reception

— Symphony Ballroom - 3rd Floor —

## Saturday, March 22

**7:00am–8:00am**

### Continental Breakfast

— Symphony Ballroom - 3rd Floor —

### Poster Session II

— Symphony Ballroom - 3rd Floor —

**8:00am–9:30am**

### Neonatal: Hypoxic Brain Injury

— Overture - 3rd Floor —

### Neonatal: GI and Feeding

— Concerto A/B - 3rd Floor —

### Neonatology: Neurology and Development

— Aria A - 3rd Floor —

### Endocrinology I

— Rhapsody - 4th Floor —

### Behavioral and Developmental Pediatrics

— Minuet - 4th Floor —

### General Pediatrics: Cardiology

— Maestro B - 4thFloor —

### Emergency Medicine I

— Maestro A - 4thFloor —

**9:30am–9:45am**

### Coffee Break

— Symphony Ballroom - 3rd Floor —

**9:45am–11:15am**

### Neonatology: Cardiology I

— Concerto A/B - 3rd Floor —

### Endocrinology II

— Rhapsody - 4th Floor —

### Pulmonary

— Aria A - 3rd Floor —

### Infectious Diseases

— Minuet - 4th Floor —

### Critical Care

— Maestro B - 4thFloor —

### Hospitalist Medicine

— Maestro A - 4thFloor —

### Neonatal: Hypoxic Brain Injury II

— Overture - 3rd Floor —

**11:30am–12:30pm**

### Plenary Session I

#### PLENARY LECTURE

*Robin Steinhorn, MD*

Pulmonary Hypertension in Infancy: What's Known, What's New, and What's Next

— Overture - 3rd Floor —

**12:40pm–1:40pm**

### Fellows' Clinical Case Presentation Competition

— Concerto A/B - 3rd Floor —

### Eastern SPR Business Meeting

— Rhapsody - 4th Floor —

**1:45pm–2:30pm**

### Plenary Session II

#### MENTOR OF THE YEAR

*James Padbury, MD*

Next Generation Sequencing: What, When, Where, How Much, How Long, So What?

— Overture - 3rd Floor —

TRAINEE YOUNG INVESTIGATOR PRESENTATIONS: (2:30pm–3:15pm)

### Coffee Break (3:15pm–3:30pm)

— Symphony Ballroom - 3rd Floor —

FACULTY YOUNG INVESTIGATOR PRESENTATIONS: (3:30pm–4:15pm)

**4:30pm–6:00pm**

### Neonatal: ID and Immunology

— Overture - 3rd Floor —

### Neonatal: Pulmonary Animal Models

— Concerto A/B - 3rd Floor —

### Cardiac and Pulmonary Development

— Aria A - 3rd Floor —

### Neurology

— Minuet - 4th Floor —

### Neonatology: Cardiology II

— Rhapsody - 4th Floor —

### Health Services and Global Pediatrics

— Maestro A - 4thFloor —

### General Pediatrics: Adolescent Medicine

— Maestro B - 4thFloor —

**6:00pm–7:30pm**

### Poster Session III & Reception

— Symphony Ballroom - 3rd Floor —

## Sunday, March 23

**7:30am–9:00am**

### Continental Breakfast

— Symphony Ballroom - 3rd Floor —

### Poster Session IV

— Symphony Ballroom - 3rd Floor —

**9:00am–10:15am**

### Plenary Session III

PRESENTATION OF THE YOUNG INVESTIGATOR AWARDS

#### PLENARY LECTURE

*Robert Wood, MD*

Is Food Allergy a Treatable Disease?

— Overture - 3rd Floor —

**10:30am–12:30pm**

### Neonatology: General

— Overture - 3rd Floor —

### Neonatology: Pulmonary Animal Studies

— Concerto A/B - 3rd Floor —

### General Pediatrics: Obesity

— Minuet - 4th Floor —

### Hematology and Oncology

— Aria A - 3rd Floor

### Child Abuse and Neglect

— Maestro B - 4th Floor —

### Underserved Populations

— Rhapsody - 4th Floor —

### Emergency Medicine II

— Maestro A - 4thFloor —

# Friday, March 21, 2014

## Poster Session I

Quality improvement ~ Emergency Medicine ~  
Medical Education ~ Neonatology

6:00pm-7:30pm

Symphony Ballroom

- 1      **Abstract Withdrawn**  
– Abstract 1
- 2      **Project Breathe: A Multidisciplinary Approach To Asthma**  
Jyotsna Bhattacharya, Nancy Palumbo, Anne Little, Claudia Guglielmo.  
– Abstract 2
- 3      **Palivizumab Prophylaxis and Asthma Outcomes in Preterm Infants: A Retrospective Analysis of an Urban Outpatient Clinic Population**  
Katelyn M. Seither, Gary A. Emmett.  
– Abstract 3
- 4      **Stress Levels and Satisfaction Rates Among Caregivers in an Integrated Multispecialty Follow Up Clinic of NICU Graduates**  
Folasade Kehinde, Renee Turchi, Bruce Bernstein, Joyce Eugene, Roschanak Mossabeh, Lee Pachter.  
– Abstract 4
- 5      **Abstract Withdrawn**  
– Abstract 5
- 6      **Embedding Patient Simulation in a Pediatric Cardiology Rotation: A Unique Opportunity for Improving Resident Education**  
Shaun Mohan, Christopher W. Follansbee, Ugonna Nwankwo, Dena Hofkosh, Frederick S. Sherman, Melinda F. Hamilton.  
– Abstract 6
- 7      **Evaluation of Circumcision Complications**  
Joseph A. Newell.  
– Abstract 7
- 8      **Resident-Directed QI Methods Improve Antibiotic Stewardship Related To Common Infections in the Outpatient Setting**  
Laura Perretta, Evelyn Berger-Jenkins, Mariellen Lane.  
– Abstract 8
- 9      **Provider Concerns and Unmet Needs of Hospitalized Adults in Children's Hospitals**  
Adam S. Greenberg, Sophia Jan.  
– Abstract 9
- 10     **Willingness To Use an AED During SCA in Community Youth Sports: Simple Education Removes Barriers**  
Andrew J. Greubel, Janet Liroy, Scott A. Lorch.  
– Abstract 10
- 11     **Written vs. Verbal Screening for Intimate Partner Violence (IPV): Provider's Preference and Practice**  
Cynthia DeLago, Malgorzata Skarzynska, Matilde Irigoyen.  
– Abstract 11
- 12     **Gastroenterology Access Clinic Can Reduce Health Care Charges**  
Matthew D. Di Guglielmo, Li Xie, Iman Sharif, Jay Greenspan.  
– Abstract 12

- 13     **Transition-of-Care Communication for Pediatric Hospitalized Patients: Assessment after Intervention With Increased Administrative Support**  
L.C. Douglas, S.K. Liewehr.  
– Abstract 13
- 14     **Abstract Withdrawn**  
– Abstract 14
- 15     **Physical Exam and Historical Patient Factors Associated With Diagnosis of Pneumonia**  
Henry Chicaiza, Paul Wilkens, James Nevin, Renee Silvis, Sturm Jesse, Sharon Smith.  
– Abstract 15
- 16     **Sonographic Assessment of Spinal Fluid for Infant Lumbar Puncture**  
Yaffa M. Vitberg, Peggy Tseng, David O. Kessler.  
– Abstract 16
- 17     **On Shaky Ground: A Tabletop Simulation for Earthquake Trauma**  
Rachel E. Whitney, Kathy Lehman-Huskamp, Gitanjali Arora, Rita V. Burke, Dan B. Park, Mark X. Cicero.  
– Abstract 17
- 18     **Pediatric Referrals To the Emergency Department from Urgent Care Centers**  
Robert D. Wilkinson, Jennifer Dunnick, Brendan J. Dougherty, Robert P. Olympia.  
– Abstract 18
- 19     **Applying a Pediatric Early Warning Score in the Pediatric Emergency Department To Aid in Detecting Early Warning Signs of Deterioration and Ensuring Proper Disposition**  
Carmen T. Cortis, Hector Vazquez, Amit Patel, Antonios Likourezos, Estevan Garcia.  
– Abstract 19
- 20     **Determining Which Children Need ECGs in the Emergency Department**  
Shiv D. Gandhi, Danielle Federico, Renee Silvis, Jill Popp, Harris Leopold, Sharon R. Smith.  
– Abstract 20
- 21     **Feasibility of Implementing a Pediatric Asthma Pathway in a Community Hospital**  
Naomi T. Hughes, Theresa Walls, James M. Chamberlain, Kathleen Brown.  
– Abstract 21
- 22     **Pediatric ED Staff Perceptions of an EMR Implementation and the EMR Role in Patient Safety**  
Jeremy Killion, Anita Pillai, Brian Wrotniak.  
– Abstract 22
- 23     **Implementation of a Post-Resuscitation Debriefing Program in a Pediatric Emergency Department**  
Paul C. Mullan, Lauren E. Staple, James Chamberlain, Angela T. Wrateney, Allyson Thomas, Fawn Brown, Karen O'Connell.  
– Abstract 23
- 24     **Treating Children at Urgent Care Centers: A Qualitative Study To Determine How Providers Triage Pediatric Patients**  
Therese Canares, Linda Brown, Rebecca Slotkin, Aris Garro.  
– Abstract 24
- 25     **How Pediatric Residents Ask about Intimate Partner Violence: A Mixed-Methods Analysis**  
Mario Cruz, Aviva Joffe, Ashleigh Hall, Leora Mogilner, Daniel Walmsley, Bruce A. Bernstein.  
– Abstract 25



- 26 Vaccination Attitudes and Education in Naturopathic Medicine Students**  
Ather Ali, Carlo Calabrese, Robert Lee, Daniel Salmon, Heather Zwickey.  
– Abstract 26
- 27 The QIKAT-C: Validation of a New Tool To Assess Pediatric Trainees' QI Skills and Knowledge**  
Stephanie K. Doupnik, Sonja I. Ziniel, James M. Moses.  
– Abstract 27
- 28 Longitudinal, Unit-Based Quality Improvement Curriculum for Residents: Improving Project Sustainability**  
Rachel R. Osborn, Matthew Grossman.  
– Abstract 28
- 29 Moderating the Effect of CPOE on Medical Error Risk in a Level IV NICU**  
Vinay Sharma, Anne Marie Reynolds.  
– Abstract 29
- 30 Graduates from Combined Internal Medicine and Pediatrics Residency Training Programs Perform Better Than Graduates from Internal Medicine Training Programs in Passing Internal Medicine Board Examinations**  
Amanda Cai.  
– Abstract 30
- 31 Analysis of Individualized Learning Plans in a Sub-Intern Outpatient Pediatric Rotation**  
Courtney Nelson, Dustin Flannery, Alisa LoSasso, Judy Larkin, Vanessa Carlo, Mary Sammon, Daniel Walmsley.  
– Abstract 31
- 32 Using Low Cost Models for Training First Year Pediatric Residents on Four ACGME Required Procedures: A Pilot Study**  
Tara M. Petroski, Lynn Lawrence, Brian H. Wrotniak.  
– Abstract 32
- 33 Abstract Withdrawn**  
– Abstract 33
- 34 Implementation of a Simulation Curriculum To Improve Pediatric Resident Confidence With Procedural Skills**  
Jessica A. Bennett, Jason A. Clayton.  
– Abstract 34
- 35 Use of Evidence-Based Protocol by Medical Providers in a Pediatric ER for Constipation**  
Jennifer A. Argentieri, Zebunnissa Memon, Scott Bouton, Brian Wrotniak, Susan Baker, Robert Baker.  
– Abstract 35
- 36 Implementing a Standardized Feeding Protocol for Very Low Birth Weight Infants**  
Sandeep Sadashiv, Emily Hiriak, Colleen Tsarnas, Robyn Daley, Ursula Nawab.  
– Abstract 36
- 37 High Flow Nasal Cannula Versus Continuous Positive Airway Pressure in Non-Ventilated Preterm Infants**  
Dalal Taha, Michael Kornhauser, Jay S. Greenspan, Zubair H. Aghai.  
– Abstract 37
- 38 Rocuronium Bromide Use for Elective Intubation**  
Harriet Banda, Janine Bullard, Pamela Donohue, Susan Aucott, Brian Faix.  
– Abstract 38
- 39 Neurocognitive Outcomes of Former Nicu Patients Following Assisted Reproduction: A Case Control Study**  
Semsa Gogcu, Jordan S. Kase.  
– Abstract 39
- 40 Efficacy of Treatment of PDA With COX-2 Inhibitors beyond 2 Weeks of Age in VLBW Infants**  
S. Lainwala, N. Hussain.  
– Abstract 40
- 41 Term-Equivalent Magnetic Resonance Imaging (TE-MRI) Findings in Extremely Low Birth Weight (ELBW) Infants With and Without Cranial Ultrasound (CUS) Abnormalities**  
Launice Melbourne, Taeun Chang, Jonathan Murnick, Penny Glass, An N. Massaro.  
– Abstract 41
- 42 Preeclampsia (PEC), Growth Restriction (GR) and Moderate Hypothermia (HYPO) Are Independent Perinatal Predictors of Increased Length of Stay (LOS) in Preterm Infants < 30 Weeks Gestational Age (GA)**  
Catherine L. Chang, Bella Z. Fridman, Jeffrey M. Perlman.  
– Abstract 42
- 43 Need Validated Study Outcome Measures for Docosahexaenoic and Arachidonic Acids (DHA & ARA) Supplemented Infant Formula Trials: Call To Tackle Non-Validated Endpoint Issues**  
H. Sun, P. Como, P.B. Smith, W.J. Rodriguez, M.D. Murphy.  
– Abstract 43
- 44 Infant-Driven Cue Based Feeding (IDF) Versus the Traditional Practitioner-Driven Feeding (PDF) Approach Leads To Earlier Attainment of Full Nipple Feeding (FNF) and Earlier Discharge in Premature Infants**  
Abigail C. Wellington, Jeffrey M. Perlman.  
– Abstract 44
- 45 Infant Colic in Relation To Maternal Social Support, Partner Involvement in Caring for the Newborn and the Happiness of the Mother-Partner Relationship**  
Chandran P. Alexander, Ian M. Paul, Kristen H. Kjerulff.  
– Abstract 45
- 46 Preeclampsia: Effect on Newborn Blood Pressure in the 3 Days Following Preterm Birth - A Cohort Study**  
Marianne Reveret, Anne-Monique Nuyt.  
– Abstract 46
- 47 Clinical Impact of Routine Term Equivalent Magnetic Resonance Imaging (TE-MRI) in the Care of Extremely Low Birth Weight (ELBW) Infants**  
Launice A. Melbourne, Taeun Chang, Jonathan Murnick, Penny Glass, An N. Massaro.  
– Abstract 47
- 48 Unnecessary Monitoring of Gentamicin Levels in Neonates**  
Qi Rong, Anthonia Umeh, Karen Kamholz.  
– Abstract 48
- 49 Impact of Kangaroo Care on Parental Anxiety Level and Parenting Skills for Low Birth Weight Preterm Infants in the Neonatal Intensive Care Unit**  
Rachel Rothstein, Paul Visintainer, Susan Sweeney, Robert Rothstein, Rachana Singh.  
– Abstract 49
- 50 Effect of Genetic Variants of Bilirubin Metabolism on the Degree of Hyperbilirubinemia in African American Newborns**  
David L. Schutzman, Ronald J. Wong, Samuel Ajayi, Erica Gatten, Linnea M. Baudhuin.  
– Abstract 50
- 51 Effects of Hyperoxia on Gene Expression in Lipopolysaccharide-Exposed Newborn Rat Lung**  
Jagadish Elumalai, Esther Speer, Avinash Jerath.  
– Abstract 51

- 52 Weaning of Home Oxygen in Infants With Bronchopulmonary Dysplasia**  
Jennifer Yeh, Angela D. Aherrera, Sharon A. McGrath-Morrow, Joseph M. Collaco.  
– Abstract 52
- 53 Systemic Blood Pressure Correlation With Pulmonary Hypertension in Neonates With Bronchopulmonary Dysplasia**  
Seema P. Anandalwar, Lawrence M. Rhein, Ronald V. Lacro, Mary P. Mullen.  
– Abstract 53
- 54 Changes in Epidemiology and Outcomes in Infants With Pulmonary Hypertension and Bronchopulmonary Dysplasia**  
Seema P. Anandalwar, Lawrence M. Rhein, Mary P. Mullen.  
– Abstract 54
- 55 Multicenter Database of Transfusion Related Acute Gut Injury (TRAGI) from an Online Registry: www.tragiregistry.com: Consensus and Collaboration**  
Jonathan Blau, Edmund F. La Gamma.  
– Abstract 55
- 56 Pharmacological Factors and Risk of Spontaneous Intestinal Perforation (SIP)**  
Valerie D. Elberson, Bobby Mathew, Prateek Prasanna, Changxing Ma, Vasanth Kumar, Satyan Lakshminrusimha.  
– Abstract 56
- 57 Imaging Infants With Urinary Tract Infection Admitted To the Neonatal Intensive Care Unit**  
Dustin D. Flannery, Erik Brandsma, Judy G. Saslow, Kristin J. McKenna, Zubair H. Aghai.  
– Abstract 57
- 58 Hyperoxia and Phototherapy Alter Circadian Gene Expression: Implications for Cytotoxicity, Metabolism and Cellular Homeostasis**  
Shaon Sengupta, Guang Yang, Shana McCormack, Marni J. Falk, Ping La, Phyllis A. Dennerly.  
– Abstract 58
- 59 Vitamin D Increases the Expression of Circadian Rhythm Protein Rev-erb- $\alpha$  in the Lungs of LPS and Hyperoxia Exposed Neonatal Rats**  
Avani Vachhani, Suhita Gayen nee Betal, Dalal Taha, Naemat Sandhu, Ursula Nawab, Kristin McKenna, Janet Larson, Zubair H. Aghai.  
– Abstract 59
- 60 Role of Neonatal Fc Receptor (FcRn) in the Transplacental Passage of IgE**  
Arvin S. Bundhoo, Sara Paveglio, Ektor Rafti, Matson P. Adam.  
– Abstract 60
- 61 Differential Regulation of Adrenal Catecholamine and Opioid Markers in Recurrent Hypoglycemic Stress**  
Necla Kirtok, Edmund F. La Gamma, Bistra N. Nankova.  
– Abstract 61
- 62 Detection of Pepsin in Mouth Swab, a Noninvasive Method of Detecting Gastroesophageal Reflux Disease in Preterm Infants**  
Apyrle Funderburk, Sam Soundar, Zhaoping He, Ursula Nawab, Sheeja Abraham, Joan DiPalma, Michele Epstein, Heather L. Aldridge, Eileen Skiffington, Suhita Gayen nee Betal, Janet Larson, Zubair H. Aghai.  
– Abstract 62
- 63 A Novel Biomarker To Distinguish Necrotizing Enterocolitis from Spontaneous Intestinal Perforation**  
Birju A. Shah, Itsuka Kurihara, Bethany McGonnigal, Yow-Pin Lim, James Padbury.  
– Abstract 63

- 64 Skin Conductance Provides Early Objective Identification of Opiate Withdrawal**  
Christiana N. Oji-Mmuo, Kim K. Doheny, Eric J. Michael, Charles Palmer.  
– Abstract 64
- 65 Are There Specific MRI Differences in Brain Volume at Term Equivalent in Intrauterine Growth Restricted Infants Who Are Born Preterm?**  
Christie J. Bruno, Melissa Vega, Mimi Kim, Mamta Fuloria.  
– Abstract 65
- 66 Ontogenic Pattern of Inter-Alpha Inhibitor Protein Expression in Human Fetal and Newborn Brain**  
Aparna Patra, Miles C. Miller, Monique De Paep, Jiyong Zhang, Yow-Pin Lim, Edward G. Stopa, Barbara S. Stonestreet.  
– Abstract 66
- 67 Cardio-Respiratory Symptoms: An Early Warning Sign of Intestinal Dysfunction**  
Jenny R. Fox, Leroy R. Thacker, Karen D. Hendricks-Munoz.  
– Abstract 67
- 68 The Safety and Efficacy of Ketamine Sedation During Laser Treatment of Preterm Infants With Retinopathy of Prematurity (ROP)**  
Deepti Mathur, Raul A. Lazarte.  
– Abstract 68
- 69 Health Sciences Libraries: An Underutilized Patient-Education Resource?**  
Astrid B. Sarvis, Michele Mason-Coles, Jill Briggs, Swathi Ramesh, Lois Culler, Natalie G. McKnight, Karen R. Carpenter.  
– Abstract 69

**Saturday, March 22, 2014**  
**Poster Session II**  
**Developmental Biology ~ Pharmacology ~**  
**Neonatology ~ Environmental Health ~**  
**Hospitalist Medicine ~ Children with Special**  
**Health Care Needs**

7:00am–8:00am

Symphony Ballroom

- 1 Alternative Splicing (AS) of the ErbB4 Receptor Regulates Alveolar Type II (ATII) Cell Fate**  
Nisha Agarwal, Jeffrey Sumner, Dorothea Wiegel, Arlene Reyna, Chelsea Douglass, MaryAnn V. Volpe, Claire Moore, Christiane E.L. Dammann, Heber C. Nielsen.  
– Abstract 70
- 2 The Influence of Prenatal Smoke Exposure on Growth Differences Between Boys and Girls at 9 Months**  
Susan M. Braid, Jenny Bernstein.  
– Abstract 71
- 3 Rev-erba Promotes Type II Cell Proliferation in Neonatal Mice Exposed To Hyperoxia**  
Rarinthip J. Supapannachart, Guang Yang, Phyllis A. Dennerly.  
– Abstract 72
- 4 Neonatal Abstinence Syndrome and Management With Morphine Therapy in the NICU**  
Nicole Hollinger, Christopher Hvidas, Maria Samohod, Lindsey Roke, Tara E. DeCervo, Marie Roke Thomas, Kristin J. McKenna, Janet Larson.  
– Abstract 73

- 5 **Psychotropic and Non-Psychotropic Prescription Use Among Children With Autism Spectrum Disorders in Northern New England; Regional Variation and Comparison To the General Population**  
Samantha A. House, Chiang-Hua Chang, Jared R. Wasserman, David C. Goodman, Nancy E. Morden.  
– Abstract 74
- 6 **Effect of Src Kinase Inhibition on Interleukin-1 Beta (IL-1 $\beta$ ) Production Following Hypoxia in the Cerebral Cortex of New-born Piglets**  
Dimitrios Angelis, Shadi Malaeb, Tania D. Fontanez-Nieves, Shruti Fadia, Maria Delivoria-Papadopoulos.  
– Abstract 75
- 7 **Effect of Hypothermia and Continued Administration of Levetiracetam (Keppra®) on Long Term Mitochondrial ATP Synthase Activity after Hypoxia-Ischemia in the Newborn Piglet Brain**  
Shadi Malaeb, Michael Goldenthal, Agustin Legido, Shirish Damle, Maria Delivoria-Papadopoulos.  
– Abstract 76
- 8 **Effects of Hyperoxia on the Expression of Circadian Genes (Nr1d1 and CLOCK) and Inflammatory Mediators (IL-6, TNF- $\alpha$ ) in Cord Blood Monocytes**  
Subita Gayen nee Betal, Apryle Funderburk, Ursula Nawab, Sankar Ad-dya, Naemat Sandhu, Avani Vachhani, Janet Larson, Zubair H. Aghai.  
– Abstract 77
- 9 **Decreased Prematurity Rates in an Open-Access Universal Health Care System**  
Krystin A. Engelhardt, Elizabeth Hisle-Gorman, Gregory H. Gorman, Nicole R. Dobson.  
– Abstract 78
- 10 **Neonatal Withdrawal Scores Differ By Age-Adjusted Gestational Age: A Retrospective Cohort Study in NICU Patients After Iatrogenic Opioid Exposure**  
Sindhu Perampalam, Alexander G. Agthe.  
– Abstract 79
- 11 **Large Sample Size Versus Detailed Data Collection: Strengths of Observational Versus Chart Review Studies for Pediatric Drug Safety**  
Ann W. McMahon, Gerold T. Wharton, Daniela Testoni, Reese H. Clark, Hornik P. Christoph, Phillip Brian Smith, William Rodriguez, Mary Dianne Murphy.  
– Abstract 80
- 12 **Cerebral Tissue Oxygenation Using Near Infrared Spectroscopy (NIRS) Before, During, and after Therapeutic Hypothermia**  
Meredith C. Dixon, Mariam M. Said, Khodayar Rais-Bahrani.  
– Abstract 81
- 13 **Prevention of Unplanned Extubations in Neonates: A Quality Improvement Project**  
Tania D. Fontanez-Nieves, Endla Anday, Mackenzie Frost, Deborah Davis, Alison J. Carey.  
– Abstract 82
- 14 **Precordial Doppler Ultrasound Achieves Earlier and More Accurate Newborn Heart Rates in the Delivery Room**  
Sonal Goenka, Mehbeen Khan, Robert I. Koppel, Howard S. Heiman.  
– Abstract 83
- 15 **Effect of Concurrent Administration of Src Kinase Inhibitor With Hypothermia on Ca<sup>2+</sup>Calmodulin Kinase IV (CaM Kinase IV) Activity After Hypoxia-Ischemia in Newborn Piglet Brain**  
Panagiotis Kratimenos, Jane McGowan, Shadi Malaeb, Juan Ballesteros, Maria Delivoria-Papadopoulos.  
– Abstract 84
- 16 **Should We Routinely Weight-Adjust Caffeine Dose in Pre-mature Infants Having Apnea Episodes?**  
Jennifer K. Kurtz, Gladys El-Chaar, Susanna Castro-Alcaraz.  
– Abstract 85
- 17 **What Is the Optimal Method To Assess the Adequacy Bag-Mask Ventilation?**  
Stephen A. Pearlman, Susan Coffey Zern, Thomas Blackson, Joseph A. Ciarlo, Wei Zhang, Amy B. Mackley, Robert Locke.  
– Abstract 86
- 18 **Non Invasive Ventilation in the Delivery Room: Lung Protection Right from Birth**  
Sandeep Sadashiv, John Emberger, Gina Moore, Robin Maguire, Andrew Ellefson, Robert Locke, John Stefano.  
– Abstract 87
- 19 **Relationship of Maternal Methadone Dose and Short Term Neonatal Outcomes**  
Maria Samohod, Kristin J. McKenna, Ursula Nawab, Zubair Aghai, Janet Larson.  
– Abstract 88
- 20 **Maternal Diabetes Classification Affects the Incidence of Neonatal Hypoglycemia**  
Liliana Morales, Susana Castro-Alcaraz.  
– Abstract 89
- 21 **Is Non-Invasive Respiratory Support Associated With Improved Mortality and Short Term Outcomes in Infants With Severe BPD?**  
Nicolas Bamat, Kevin Dysart, David Munson, Kathryn L. Maschhoff, William W. Fox, Huayan Zhang, Haresh Kirpalani.  
– Abstract 90
- 22 **Patterns of Intestinal Microflora in Very Low Birth Weight Infants During Their NICU Stay**  
Champa N. Codipilly, Vanessa Batista Flores, Hardik Patel, Debra Potak, Richard J. Schanler.  
– Abstract 91
- 23 **Increased Monocytes and Bands Following RBC Transfusion: Precursor To NEC?**  
Andrew M. Ellefson, Robert G. Locke, Yong Zhao, Amy B. Mackley, David A. Paul.  
– Abstract 92
- 24 **Abstract Withdrawn**  
– Abstract 93
- 25 **Assessing the Timing of Antibiotic Initiation and Appropriateness for Presumed Sepsis in the NICU**  
Rubina Pothiawala, Joseph Volk, Alexander Knee, Robert Rothstein, Rachana Singh.  
– Abstract 94
- 26 **Can the Sepsis Risk Calculator Safely Minimize Sepsis Evaluation To Prevent Early-Onset GBS Disease?**  
Maytham Srayyih, Anna Theresa Siao, Rosemary Nunez-Davis, Kashish Mehra, Agnes Salvador.  
– Abstract 95
- 27 **The Impact of Open Dialogue and Written Guidelines on the Perception of Pre-Delivery Counseling for Infants at Borderline Viability**  
Lindsay R. Tellefsen, Jodi Schucker, Suzanne M. Touch.  
– Abstract 96

- 28 **Elements of an Effective Airway Emergency Response Program in a Neonatal Intensive Care Unit**  
Hitesh Deshmukh, Janet Lioy.  
– Abstract 97
- 29 **Characteristics of Infants Requiring Phenobarbital for NAS**  
Kristin J. McKenna, Ursula Nawab, Zubair Aghai, Janet Larson.  
– Abstract 98
- 30 **Developing an Antimicrobial Stewardship Program in a Level IV Neonatal Intensive Care Unit (NICU)**  
Nneka I. Nzegwu, Michelle Rychalsky, Amber Natusch, George Paci, Robert Baltimore, Matthew Bizzarro.  
– Abstract 99
- 31 **Differences in Treatment Based on Prenatal Exposure To Single Versus Multiple Illicit Substances**  
A. Sharma, C. Garretson, E. Brandsma, J. Saslow, W. Graessle, Z. Aghai, A. Kushnir.  
– Abstract 100
- 32 **A QI Initiative To Attain Normothermia in the Delivery Room Using a Checklist**  
Alexandra Vinci, Bianca Fornier, Shahidul Islam, Phyllis Wan-Huen, Nazeeh Hanna, Amrita Nayak.  
– Abstract 101
- 33 **White Cell Changes in Necrotizing Enterocolitis (NEC) With Neutropenia Treated With Recombinant Human Granulocyte Stimulating Factor (rhG-CSF) + Intravenous Immunoglobulin (IVIG)**  
Sri Narayana, Prabhakar Kocherlakota, Jonathan Blau, Edmund La Gamma.  
– Abstract 102
- 34 **Intensive Care Nursery (ICN) Discharge: Assessing Care Transition**  
Katherine T. Wild, Nancy L. Brodsky, Hallam Hurt.  
– Abstract 103
- 35 **Intrauterine LPS Exposure and Post-Natal Hyperoxia Reduces Sirtuin1 and Increases Acetylated NF-kB in the Lungs of Neonatal Rats**  
Suhita Gayen nee Betal, Dalal Taha, Naemat Sandhu, Avani Vachhani, Ursula Nawab, Kristin Mckenna, Janet Larson, Zubair H. Aghai.  
– Abstract 104
- 36 **Infection in Febrile Infants With Neonatal Abstinence Syndrome**  
Olayemi Ola, Alla Kushnir, Gary Stahl, Judy Saslow, Erik Brandsma.  
– Abstract 105
- 37 **Effect of Hypothermia on Caspase Enzyme Activity After Hypoxia-Ischemia in the Newborn Piglet Brain**  
Nandita Mandhani, Christine Yankowski, Shadi Malaeb, Qazi Ashraf, Maria Delivoria-Papadopoulos.  
– Abstract 106
- 38 **Mechanism of Calmodulin Modification During Hypoxia in the Newborn Piglet Brain**  
Valerie Martin, Qazi M. Ashraf, Dimitrios Angelis, Panagiota Kalogeroudis, Maria Delivoria-Papadopoulos.  
– Abstract 107
- 39 **Can Maternal Serum Biomarkers Be Used as a Screening Tool for Pulmonary Hypertension Risk in Patients With Bronchopulmonary Dysplasia?**  
Meera S. Meerkov, Mamta Fuloria, Christine Capone, Mimi Kim, Dan Wang, Melissa Vega, Nicole Sutton, Christie J. Bruno.  
– Abstract 108
- 40 **Resveratrol Up-Regulates Circadian Proteins Rev-erb- $\alpha$  and CLOCK in Hyperoxia and LPS Exposed Neonatal Rat Lung**  
Dalal Taha, Suhita Gayen nee Betal, Avani Vachhani, Naemat Sandhu, Ursula Nawab, Kristin Mckenna, Janet Larson, Zubair H. Aghai.  
– Abstract 109
- 41 **Do Functional Genetic Variations of NFKBIA Increase Susceptibility To BPD?**  
Usama Younis, Lynnette H. Kim, Umesh Paudel, Divya Chhabra, Johanna M. Calo, Lance A. Parton.  
– Abstract 110
- 42 **Short-Term Outcomes of Infants With Severe Bronchopulmonary Dysplasia - Three Year Experience of a Tertiary Referral Program**  
Huayan Zhang, Kevin C. Dysart, Erik A. Jensen, David A. Munson, Kathryn L. Maschhoff, Kelcey Fredrickson, Kathleen A. Nilan, William W. Fox, Haresh Kirpalani.  
– Abstract 111
- 43 **Effects of Nitrated and Omega-3 Fatty Acids on Phthalate-Induced Inflammation in Neonates**  
Moiz Mohammed, Faith E. Archer, Jehan Abukharma, Imran Malik, Sharada Gowda, Barry I. Weinberger, Anna M. Vetrano.  
– Abstract 112
- 44 **Protective Effects of Breast Milk Fail To Prevent Transfusion Related Acute Gut Injury (TRAGI)**  
Kendall Shillingford, Heather L. Brumberg, David Aboudi, Edmund F. La Gamma.  
– Abstract 113
- 45 **Exposure To Constant Light and Hyperoxia Impair Postnatal Lung Vascular Development**  
Alexa R. Sadreameli, Shaon Sengupta, Guang Yang, Phyllis A. Dennerly.  
– Abstract 114
- 46 **Misclassification of Newborn Infants Due To Plotting Error**  
Lena J. Kim, Necla Kirtok.  
– Abstract 115
- 47 **Nuclear Receptor Regulation of Placental BCRP Expression: Implications for Fetal Growth Restriction**  
Naureen Memon, Kristin M. Bircsak, Yixin Li, Barry Weinberger, Anna Vetranno, Lauren M. Aleksunes.  
– Abstract 116
- 48 **Screening for Osteopenia of Prematurity; a Meta Analysis**  
Frederick Ogwara, Arpit Argawal, Peter Homel, Alok Bhutada, Shantanu Rastogi.  
– Abstract 117
- 49 **Choline Prevention of Toluene Neurotoxicity**  
Kimberly M.R. White, Ningfeng Tang, Min He, Cynthia F. Bearer.  
– Abstract 118
- 50 **Triclosan and Paraben Exposure Is Associated With Allergen Sensitization**  
Adam J. Spanier, Tracy Fausnight, Tareq F. Camacho, Joseph Braun.  
– Abstract 119
- 51 **Association between Perfluoroalkyl Acids and Kidney Function in Adolescents**  
Anglina Kataria, Leonardo Trasande, Howard Trachtman.  
– Abstract 120
- 52 **Antibiotic Resistance of *Staphylococcus aureus* (SA) Isolated from Skin Abscesses: A 5-Year Retrospective Study**  
Alvaro J. Coronado Munoz, Tsohline Kojaoghlanian, Uri Belkind, David Listman, Smita Prakash, David H. Rubin.  
– Abstract 121



- 53 **Factors Leading To Group B *Streptococcus* Colonization in the Genital Tract of Non-Pregnant Women**  
Purnahamsi V. Desai, Tara M. Randis, Katherine J. Sapra, Shari E. Gelber, Adam J. Ratner.  
– Abstract 122
- 54 **Replicative Stress in Antiretroviral-Induced Mitochondrial Toxicity**  
Allison Langs-Barlow, Foli Yram, Elizabeth Tubridy, Regina Edifor, Li Min, Paintsil Elijah.  
– Abstract 123
- 55 **Detection of Vaginolysin as New Diagnostic Tool for Bacterial Vaginosis**  
Purnahamsi V. Desai, Tara M. Randis, Katherine J. Sapra, Eshan Sapra, Chase W. Shutak, Shari E. Gelber, Adam J. Ratner.  
– Abstract 124
- 56 **Tissue Tropism of *Candida parapsilosis* in a Mouse Model of Hematogenous Dissemination**  
Diana P. Vargas, Sonia S. Laforce-Nesbitt, Sunil K. Shaw, Joseph M. Bliss.  
– Abstract 125
- 57 **Demographics of Community-Acquired Extended-Spectrum Beta-Lactamase Urinary Tract Infections in the Pediatric Population**  
Theresa M. Fiorito, Leonard R. Krilov, Paul J. Lee.  
– Abstract 126
- 58 **Rates of Positive Blood and Urine Cultures in Patients Admitted To the Pediatric Floor in an Inner-City Community Hospital in the Current Era**  
Syed Asim A. Shah, Murli U. Purswani, Lin L. Kin.  
– Abstract 127
- 59 **Hyperchloremic Non-Anion Gap Metabolic Acidosis Following Infusion of Isotonic Versus Hypotonic Parenteral Solutions in Children**  
Panagiotis Kratimenos, Ioannis Koutroulis, Filippina-Filia Dimitriadi, Geoffrey Lim, Janice Lichtenberger, Margaret C. Fisher.  
– Abstract 128
- 60 **Postnatal Renal Ultrasound in Near Term and Term Newborns: Indications and Findings**  
Sonia Mehra, Mahmood Soran, Ramiro Lizano Santamaria, Barbara Kelly.  
– Abstract 129
- 61 **Family Centered Rounds in an Academic Center: Including All Pediatricians**  
Matthew R. Grossman, Jonathan Flyer, Rachel Osborn.  
– Abstract 130
- 62 **Listening To Latina Mothers of Children and Youth With Special Health Care Needs: A Qualitative Study**  
Renee Turchi, Francis X. McNesby, Lee M. Pachter, Bruce Bernstein.  
– Abstract 131
- 63 **In-Patient Feeding Program in a Pediatric Acute Rehab Facility: A Viable Option To Treat Feeding Problems, Resolve Enteral Tube Dependency, and Prevent or Discontinue Need for Gastrostomy in Post-ECMO Infants**  
Ros Dalope.  
– Abstract 132
- 64 **Physician Practices To Prevent Diversion of ADHD Stimulant Medications**  
Natalie Colaneri, Majnu John, Andrew Adesman.  
– Abstract 133

- 65 **Baltimore City Infants and Toddlers Program at the University of Maryland: Correlation Among Physician Referral, Parental Concern, and Expressive Language Delay**  
Allison J. Siegel, Melanie Miller, Alexander G. Agthe, Brenda Hussey-Gardner.  
– Abstract 134
- 66 **Medical Evaluation of Children With Intellectual Disability: Clinician Non-Compliance With Published Guidelines**  
Alexis Tchaconas, Andrew Adesman.  
– Abstract 135
- 67 **The Impact of Serum Cotinine Levels on Hospitalization Rates among US Children and Adolescents, NHANES 2007-2010 Data**  
Philip Kum-Nji, Lori Keyser-Marcus, Linda D. Meloy.  
– Abstract 136
- 68 **Clinical Course of Children Admitted With Asthma Exacerbations Once Bronchodilator Therapy Has Been Spaced To Every Three Hours**  
Jessica Z. Berenson, Callie E. Hansen, Amy L. Canavan, Swathi Ramesh.  
– Abstract 137
- 69 **Baby Apps: Exploring 6 Month Old Media Screen Time**  
Sahel Hazrati, Kathi C. Huddleston.  
– Abstract 138

## Saturday, March 22, 2014 Platform Session

### Behavior and Developmental Pediatrics

8:00am–9:30am

Minuet

Moderator: Ruth Milanaik

- 8:00am **Positive and Sustained Effects of Short Course Androgen Therapy in Infancy on the Neurodevelopmental Outcome in Boys With XXY (Klinefelter Syndrome) from 36 Through 108 Months of Age**  
Carole A. Samango-Sprouse, Emily J. Stapleton, Thomas P. Donahue, Teresa Sadeghin, Francie L. Mitchell, Andrea L. Gropman.  
– Abstract 139
- 8:15am **Faux Pas Recognition Testing as a Measure of Social Deficits in Children With ADHD: Assessment and Comparison With Parent Predictions**  
Obianuju Obioha, Andrew Adesman, Helen Papaioannou, Maria Mendoza, Anna Krevskaya, Ruth Milanaik.  
– Abstract 140
- 8:30am **Relationship between Cognitive Development and Touchscreen Device Usage in Infants and Toddlers**  
Clayton Li, Meredith Akerman, Janet Lee, Chuck Ng, Maria Mendoza, Anna Krevskaya, Krish Suresh, Ruth Milanaik.  
– Abstract 141
- 8:45am **Younger Gestational Age Is Associated With Worse Short-Term Neurodevelopmental (ND) Outcome in Congenital Diaphragmatic Hernia (CDH)**  
Enrico Danzer, Marsha Gerdes, Jo Ann D'Agostino, Casey Hoffman, Judy Bernbaum, Natalie E. Rintoul, William H. Peranteau, Alan W. Flake, N. Scott Adzick, Holly L. Hedrick.  
– Abstract 142

- 9:00am Patient Characteristics Are Important Determinants of Short-Term Neurodevelopmental (ND) Outcome in Children With Giant Omphalocele GO**  
Enrico Danzer, Marsha Gerdes, Jo Ann D'Agostino, Judy Bernbaum, Casey Hoffman, Natalie E. Rintoul, Alan W. Flake, N. Scott Adzick, Holly L. Hedrick.  
 – Abstract 143

- 9:15am Correlation of Touchscreen Device Usage and Television Viewing With Feeding Habits, Night Waking Episodes, and Parent Frustration: A Pilot Study**  
Clayton Li, Janet Lee, Meredith Akerman, Chuck Ng, Maria Mendoza, Anna Krevskaya, Ruth Milanaik.  
 – Abstract 144

## Emergency Medicine I

**8:00am–9:30am Maestro A**

*Moderator: Melissa Langhan*

- 8:00am Use of Intranasal Fentanyl for Sickle Cell Pain in the Pediatric Emergency Department**  
Jeffrey N. Chen, Silvis M. Renee, William T. Zempsky, Rogers C. Steven.  
 – Abstract 145
- 8:15am A Quality Improvement Project To Improve Pain Management for Patients With Extremity Pain in the Pediatric ED**  
Daniel M. Fein, Rochelle R. Hartley, Steven J. Choi, Paul Chambers.  
 – Abstract 146
- 8:30am Recidivism of Children With ED Visits for Abdominal Pain**  
Kirsten L. Morrissey, Danielle I. Miano, Jill Popp, Sharon R. Smith.  
 – Abstract 147
- 8:45am Prevalence and Predictors of Return Visits To Pediatric Emergency Departments**  
Ayobami T. Akenroye, Cary W. Thurm, Mark I. Neuman, Elizabeth R. Alpern, Geetanjali Srivastava, Sandra P. Spencer, Harold K. Simon, Samir S. Shah, Richard E. McClead, Javier Tejedor-Sojo, Elizabeth Brennan, Craig H. Gosdin, Laura M. Gottlieb, James C. Gay, Anne M. Stack.  
 – Abstract 148
- 9:00am Let Us Use LET: Knowledge Translation Quality Improvement Initiative**  
Joshua M. Sherman, Patrick Sheppard, Eric Hoppa, William Krief, Jahn Avarello.  
 – Abstract 149
- 9:15am Outcome After Initial Management of *Staphylococcus aureus* (SA) Skin Abscesses in the Pediatric Emergency Department (PED)**  
Alvaro J. Coronado Munoz, Tsohline Kojaoghlanian, Paulo Pina, Uri Belkind, David Listman, Smita Prakash, David H. Rubin.  
 – Abstract 150

## Endocrinology I

**8:00am–9:30am Rhapsody**

*Moderator: Robert Rapaport*

- 8:00am Evolving Growth Hormone Deficiency**  
Lindsey Waldman, Evan Graber, Marina Goldis, Dennis Chia, Molly Regelmann, Michelle Klein, Elizabeth Wallach, Robert Rapaport.  
 – Abstract 151
- 8:15am Neonatal Exendin-4 Treatment Attenuates the Postnatal Inflammatory Response in IUGR Liver**  
Julie Dobkin, Lane Jaekle Santos, Sara Pinney.  
 – Abstract 152

- 8:30am Exenatide (Byetta) Prevents Obesity in Mouse Model of Hypothalamic Obesity**  
Meizhan Lai, Jeffrey Roizen, Bassil Kublaoui.  
 – Abstract 153
- 8:45am Children Under Age 7 With Hyperthyroidism Require Higher Weight-Based Doses of Methimazole To Normalize Free T4 Compared To Older Children**  
Diana Newsom, Priya Vaidyanathan, Paul Kaplowitz.  
 – Abstract 154
- 9:00am Vitamin D Status in Refugee Children Seen in a North Philadelphia Refugee Clinic**  
Zohreh Shoar, Morgan Leafe.  
 – Abstract 155
- 9:15am Prevalence and Determinants of True Thyroid Dysfunction among Pediatric Referrals for Abnormal Thyroid Function Tests**  
Amit Lahoti, Jason Klein, Tiffany Schumaker, Patricia Vuguin, Graeme Frank.  
 – Abstract 156

## General Pediatrics: Cardiology

**8:00am–9:30am Maestro B**

*Moderator: Andy Glatz*

- 8:00am Retrospective Chart Review for Comparison of Broad Panel and Specific Genetic Testing in Children With Inherited Hypertrophic Cardiomyopathy**  
Nathaniel D. Bales, Nicole Johnson, Daniel P. Judge, Anne M. Murphy.  
 – Abstract 157
- 8:15am Pre-Participation Evaluation of Young Athletes for Sudden Cardiac Death Risk: Are Schools Asking the Right Questions?**  
Caitlin Heyden, Marybeth Heyden, James Nielsen, Catherine Messina, Laurie Panesar.  
 – Abstract 158
- 8:30am Three-Dimensional Printing of Congenital Heart Defects from Echocardiographic Source Images: Feasibility and Accuracy**  
Laura J. Olivieri, Axel Krieger, Yue-Hin Loke, Dilip Nath, James Jago, Peter Kim, Craig A. Sable.  
 – Abstract 159
- 8:45am Atrioventricular Nodal Re-Entrant Tachycardia in Children: Is It Familial?**  
Sonia Mehra, Bryan C. Cannon.  
 – Abstract 160
- 9:00am Assessment of Clinical Parameters and Cardiac MRI as Predictors of Outcome in Pediatric Myocarditis**  
Shagun Sachdeva, Xiaoyan Song, Niti Dham, Deneen M. Heath, Roberta L. DeBiasi.  
 – Abstract 161
- 9:15am Congenital Heart Disease, the Postgraduate Years: What Happens To Our Patients After They Leave Pediatric Cardiology Practice?**  
Amanda W. Cai.  
 – Abstract 162

8:00am–9:30am Concerto A/B

Moderator: David Schutzman

**8:00am Oxytocin Plays an Anti-Inflammatory Role in a Murine Model of Necrotizing Enterocolitis**  
Karen Gluck, Korey Stevanovic, Michael Gershon, Kara Margolis.  
– Abstract 163

**8:15am Implementing Evidence-Based Nutritional Practices Reduces Postnatal Growth Restriction in Infants < 31 Weeks**  
Jeffrey M. Meyers, Meggan Butler-O'Hara, Tara Foti, Timothy P. Stevens.  
– Abstract 164

**8:30am Expressed Breast Milk (EBM) Analysis: An Innovative Tool in Optimizing Protein Energy (P/E) Ratio and Avoiding Protein Deficit After Preterm Birth**  
Sharmeel Khaira, Antoinette Pert, Karen Harvey-Wilkes, Heber C. Nielsen, MaryAnn V. Volpe.  
– Abstract 165

**8:45am WBC Changes in Necrotizing Enterocolitis (NEC) Treated With Recombinant Human Granulocyte Stimulating Factor (rhG-CSF) + Intravenous Immunoglobulin (IVIG) vs Standard of Care Alone: RCT Interim Analysis**  
Sri Narayana, Prabhakar Kocherlakota, Boriana Parvez, Edmund La Gamma.  
– Abstract 166

**9:00am Growth and Early Neurodevelopmental Outcomes in Extremely Low Birth Weight Infants Fed Donor Breast Milk**  
Laura S. Madore, T. Jumani, A. Dengos, H. Prague, S. Sen.  
– Abstract 167

**9:15am The Microbiota Regulates Neutrophil Homeostasis and Host Resistance To *Escherichia coli* Sepsis in Neonatal Mice**  
Hitesh Deshmukh, G. Scott Worthen.  
– Abstract 168

## Neonatal: Hypoxic Brain Injury I

8:00am–9:30am Overture

Moderator: Rachana Singh

**8:00am Effect of Concurrent Administration of Clonidine With Hypothermia on Apoptosis After Hypoxia-Ischemia in the Newborn Piglet Brain**  
Shadi Malaeb, Jane McGowan, Juan Ballesteros, Panagiotis Kratimenos, Maria Delivoria-Papadopoulos.  
– Abstract 169

**8:15am Mechanism of Hypoxia-Induced Expression of Ca<sup>++</sup>/CaM-Dependent Protein Kinase-Kinase in Neuronal Nuclei of the Cerebral Cortex of Newborn Piglets**  
Fredrick Dapaah-Siakwan, Waseem Akhter, Juan Ballesteros, Qazi M. Ashraf, Maria Delivoria-Papadopoulos.  
– Abstract 170

**8:30am Long Term Effect of Src Kinase Inhibition on Expression of Protein Tyrosine Phosphatase 1B Following Hypoxia in the Cerebral Cortex of Newborn Piglets**  
Teresa J. Witcher, Waseem Akhter, Panagiotis Kalogeroudis, Qazi M. Ashraf, Maria Delivoria-Papadopoulos.  
– Abstract 171

**8:45am Effect of Src Kinase Inhibition on Nuclear Calcium Following Hypoxia in the Cerebral Cortex of Newborn Piglets**  
Andy C. Wang, Lynn E. Zeits, Panagiotis Kratimenos, Zack Kodyattu, Maria Delivoria-Papadopoulos.  
– Abstract 172

**9:00am Effect of Concurrent Inhibition of Neuronal Nitric Oxide Synthase and Induction of Hypothermia After Hypoxia-Ischemia on Apoptosis in the Newborn Piglet Brain**  
Juan Ballesteros, Shadi Malaeb, Panagiotis Kratimenos, Nicholas Obiri, Maria Delivoria-Papadopoulos.  
– Abstract 173

**9:15am Effect of Src Kinase Inhibition on Expression of Apoptotic Protease Activating Factor-1 (Apaf-1) Following Hypoxia in the Cerebral Cortex of Newborn Piglets**  
Sam Ajayi, Waseem Akhter, Dimitrios Angelis, Valerie Martin, Maria Delivoria-Papadopoulos.  
– Abstract 174

## Neonatology: Neurology and Development

8:00am–9:30am Aria A

Moderator: Andrew Blaufox

**8:00am Abstract Withdrawn**  
– Abstract 175

**8:15am Effect of Adolescent Stress on Adult Behavior in IUGR Offspring**  
Lori Christ, Nicola M. Grissom, Robert George, Teresa M. Reyes.  
– Abstract 176

**8:30am Extremely Low Birth Weight Infants Born To Adolescent Mothers: A Double Hit To Behavior and Development**  
Laurie Hoffman, Betty Vohr, Carla M. Bann, Rosemary D. Higgins.  
– Abstract 177

**8:45am Antenatal Antecedents of Modified Checklist for Autism in Toddlers (M-CHAT) Positivity in Extremely Low Gestational Age Newborns**  
Carmina Erdei, T. Michael O'Shea, Elizabeth N. Allred, Alan Leviton, Olaf Dammann.  
– Abstract 178

**9:00am Interneuron Neurogenesis Continues in the Cerebral Cortex of Premature Infants**  
Arslan Arshad, Linnea R. Vose, Govindaiah Vinukonda, Praveen Ballabh.  
– Abstract 179

**9:15am Sex Differences in EEG Activity Between Healthy Newborns During the First Days of Life**  
Jacquelyn Piraquive, William P. Fifer, Joel S. Yang, Tracy Thai, Michael M. Myers, Nina Burtchen.  
– Abstract 180

## Critical Care

9:45am–11:15am Maestro B

Moderator: Angela Wratney

**9:45am Race Influences Communication Patterns in the Intensive Care Unit**  
Adrian D. Zurca, Kiondra R. Fisher, Tessie W. October.  
– Abstract 181

**10:00am Incidence of Complications of Non-Invasive Positive Pressure Ventilation in *Status asthmaticus* in Children**  
Emily Wasserman, Sara L.P. Ross, James S. Killinger.  
– Abstract 182

**10:15am Is Oxygen Saturation Index (OSI) a Valid Indicator of Neonatal Hypoxemic Respiratory Failure ?**  
Praveen K. Chandrasekharan, Bobby Mathew, Sylvia F. Gugino, Carmon Koenigsnecht, Daniel Swartz, Jayasree Nair, Munmun Rawat, Satyan Lakshminrusimha.

– Abstract 183

**10:30am Methylprednisolone Infusion in Early Pediatric Ards: A Double Blind Randomized Controlled Pilot Study**  
Bonny B. Drago, Gianfranco Meduri, Cynthia Rovnaghi, Dai Kimura, Kanwaljeet J. Anand.

– Abstract 184

**10:45am A Survey Demonstrating Lack of Consensus on the Sequence of Medications for Treatment of Hyperkalemia amongst Pediatric Providers**  
Nnenna O. Chime, Xun Luo, LeAnn McNamara, Akira Nishisaki, Elizabeth A. Hunt.

– Abstract 185

**11:00am Impact of Contextualized Pediatric Critical Care Training on Pediatric Healthcare Providers in Botswana**  
Shelton W. Wright, Loeto Mazhani, Heather A. Wolfe, Mark Ralston, Vinay M. Nadkarni, Peter A. Meaney.

– Abstract 186

## Endocrinology II

**9:45am–11:15am Rhapsody**

*Moderator: Andy Bauer*

**9:45am DNA Hypermethylation at Loci Associated With Diabetes, Obesity and Cardiac Abnormalities in CD3+ T Lymphocytes of Intrauterine Growth Restricted Newborns**  
Mamta Fuloria, Yoshinori Seki, Lyda Williams, Alex Cheng, Xiu-Quan Du, Fabien Delahaye, Francine Einstein, Maureen Charron.

– Abstract 187

**10:00am School Is in Session: An Assessment of Accommodations for Students With Diabetes in Bronx Public Schools**  
Juan J. Lado, Jenna Scholnick.

– Abstract 188

**10:15am Irisin Levels Are Lower in Young Amenorrheic Athletes Compared With Eumenorrheic Athletes and Non-Athletes and Correlate With Bone Structure and Strength**  
Vibha Singhal, Elizabeth A. Lawson, Kathryn E. Ackerman, Pouneh Fazeli, Hannah Clarke, Kamryn Eddy, Dean A. Marengi, Nicholas P. Derico, Mary L. Boussein, Madhusmita Misra.

– Abstract 189

**10:30am Mental Health Screening in Adolescents With Diabetes**  
Elizabeth Burtman, Phyllis W. Speiser.

– Abstract 190

**10:45am Racial Differences in Measures of Cardiometabolic Health in Pediatric Metabolically Healthy Obese and Metabolically Unhealthy Obese Subjects**  
Jason Klein, Patricia M. Vuguin, Ronald Feinstein.

– Abstract 191

**11:00am Use and Timing of Insulin Pump Therapy Is Not Associated With Quality of Life in Children With T1DM or Their Parents**  
Mahmuda M. Ahmed, Ksenia Tonyushkina, Emily Frydman, Alexander Kneec, Holley F. Allen.

– Abstract 192

## Hospitalist Medicine

**9:45am–11:15am Maestro A**

*Moderator: Macdara Tynan*

**9:45am The Effect of Rapid Viral Testing on Antibiotic Use and Hospital Length of Stay at an Urban Academic Hospital**  
Jessica W. Wang, Shari Platt.

– Abstract 193

**10:00am Management of Children Diagnosed With Simple and Complex Febrile Seizures in Children at the Hospital Setting**  
Brittany M. Carey, Srividya Naganathan, Anna Petrova.

– Abstract 194

**10:15am Variation in Hospitalization Costs for Common Pediatric Conditions**  
E. Fieldston, I. Zanillett, M. Hall, J. Colvin, L. Gottlieb, M. Sills, J. Bettenhausen, P. Hain, R. Morse, M. Macy, G. Frank, S. Shah.

– Abstract 195

**10:30am A Disconnect: Pediatric Hospitalists and ED Physicians Diagnosis & Treatment of Bronchiolitis in a Children's Hospital**  
Jacqueline Herold, Angie Hernandez, Carolyn Hirschmann, Stephen Barone, Nancy Palumbo.

– Abstract 196

**10:45am The Utility of 6-Hour Rebound Bilirubin Levels in Otherwise Healthy Neonates Admitted for Phototherapy**  
Adam Berkwitt, Rachel Osborn, Matthew Grossman.

– Abstract 197

**11:00am The Impact of a Breastfeeding Support Intervention on Breastfeeding Duration in Jaundiced Infants Admitted To a Tertiary Care Centre Hospital; a Randomized Controlled Trial**  
Catherine M. Pound, Katherine Moreau, Kristina Rohde, Ken Farion, Nick Barrowman, Mary Aglipay, Amy C. Plint.

– Abstract 198

## Infectious Diseases

**9:45am–11:15am Minuet**

*Moderator: Aracelis Fernandez*

**9:45am Distinct Secretome Responses of Human Newborn and Adult Monocytes in Response To Vaccine Adjuvants**  
Djin-Ye Oh, David J. Dowling, Saima Ahmed, Ilana Bergelson, John Sauld, Henry Pollack, Hanno Steen, Ofer Levy.

– Abstract 199

**10:00am Children With Medically Unexplained Symptoms (MUS) Who Present To a Pediatric Infectious Diseases (PID) Clinic for Possible Lyme Disease (LD): What Happens after the Visit?**  
Julie Dunbar, Carlos Oliveira, Eugene D. Shapiro.

– Abstract 200

**10:15am A Novel Biologic Marker for Antiretroviral Toxicity Found in Plasma**  
Allison Langs-Barlow, Shanmugapriya Selvaraj, Onyema Ogbuagu, Eugene Shapiro, Elijah Paintsil.

– Abstract 201

**10:30am Host Defense Proteins in Breast Milk and Neonatal Yeast Colonization**  
Brian D.W. Chow, Emily O. Perry, Juliann R. Reardon, Sonia S. Laforce-Nesbitt, Joseph M. Bliss.

– Abstract 202



**10:45am Reducing Unnecessary Testing for *Clostridium difficile* Infection (CDI) in a Pediatric Hospital System: A Quality Improvement (QI) Initiative**  
J. Michael Klatte, Rangaraj Selvarangan, Mary Anne Jackson, Kevin Mroczka, Angela L. Myers.

– Abstract 203

**11:00am Restructuring the Pediatric Viral Respiratory Testing Protocols and Procedures: A QI Initiative**  
Kathryn McKenna, Beth Carter, Jackson Williams.

– Abstract 204

## Neonatal: Hypoxic Brain Injury II

**9:45am–11:15am Overture**

*Moderator: Victor Herson*

**9:45am Effect of Hypoxia on High Affinity  $\text{Ca}^{2+}$  ATPase Activity in the Cerebral Cortex of Newborn Piglets**  
Andy C. Wang, Lynn E. Zeits, Waseem Akhter, Amanda M. Bahara, Maria Delivoria-Papadopoulos.

– Abstract 205

**10:00am Effect of Concurrent Administration of Src Kinase Inhibitor With Hypothermia on Caspase-3 Enzyme Activation After Hypoxia-Ischemia in the Newborn Piglet Brain**  
Christine Yankowski, Endla Anday, Shadi Malaeb, Maria Bergel, Maria Delivoria-Papadopoulos.

– Abstract 206

**10:15am Neural Oxygen Sensing and Neuropeptide Signaling Influence Survival after Anoxia in *C. elegans***  
John J. Flibotte, Robert G. Kalb.

– Abstract 207

**10:30am Long-Term Neuroprotective Effects of Human Adipose Derived Stem Cells in Neonatal Rats Post Hypoxic Ischemic Encephalopathy**  
Melissa February, Thomas N. Tulenko, Roy D. Goldfarb, Alla Kushnir.

– Abstract 208

**10:45am Cromolyn as Adjunct Therapy To Hypothermia in a Rat Model of Hypoxic-Ischemic Encephalopathy (HIE)**  
Catherine Chang, Shyama Patel, Jeffrey Perlman, Susan Vannucci.

– Abstract 209

**11:00am Effect of Hypothermia and Continued Administration of Antiepileptic Drug (Levetiracetam) on Long Term Neurologic Function after Hypoxia-Ischemia in the Newborn Piglet**  
Shadi Malaeb, Agustin Legido, Endla Anday, Elizabeth Wacker, Maria Delivoria-Papadopoulos.

– Abstract 210

## Neonatology: Cardiology I

**9:45am–11:15am Concerto A/B**

*Moderator: Deborah Campbell*

**9:45am Gene Expression of the Ductus Arteriosus and Aorta from Neonates and Infants**  
Pratik Parikh, George Alfieris, Michael Swartz, David Dean.

– Abstract 211

**10:00am Coarctation of the Aorta in Newborns Is Better Identified By Photoplethysmographic Waveform Analysis Than Standard Pulse Oximetry Screening**  
Lynn C. Palmeri, Meir Nitzan, Gideon Gradwohl, Yehuda Shapir, Robert Koppel.

– Abstract 212

**10:15am Cost Effectiveness of Pulmonary Hypertension Screening Echocardiograms in ELBW Infants**  
Suna Seo, Jennifer Berg, Anica Bulic, Robin Doroshov, Karen Kamholz, Jayashree Ramasethu.

– Abstract 213

**10:30am Oxygenation Indices and Correlation With Pulmonary Vascular Resistance**  
Munmun Rawat, Praveen K. Chandrasekharan, Sylvia Gugino, Carmon Koenigsknecht, Daniel Swartz, Bobby Mathew, Jayasree Nair, Satyan Lakshminrusimha.

– Abstract 214

**10:45am Natural Progression of BNP Levels in Preterm Infants without a PDA during the First 2 Weeks of Life**  
Kate Tauber, Evgenia Granina, Eileen Graffunder, Robin Doyle, Upender Munshi.

– Abstract 215

**11:00am Is Pulse Oximetry Screening for Critical Congenital Heart Disease (CCHD) Effective in the NICU?**  
Vivien Carrion, Veena Manja, Bobby Mathew, Satyan Lakshminrusimha.

– Abstract 216

## Pulmonary

**9:45am–11:15am Aria A**

*Moderator: Alfin Vicencio (Didi) & Robyn Cohen*

**9:45am Detection of Functional CFTR after Gene Editing the F508del Mutation in Cystic Fibrosis Airway Cells**  
Lee Polikoff, Christina C. Barone, Peter Geibel, Nicole A. McNeer, Kavitha Anandalingam, Rachel J. Fields, John Geibel, W. Mark Saltzman, Peter M. Glazer, Marie E. Egan.

– Abstract 217

**10:00am Heterogeneity of Lower Airway Inflammation in Children With Severe Persistent Asthma**  
Caitlin E. O'Brien, Alfin G. Vicencio.

– Abstract 218

**10:15am Effects of E-cigarette Exposure on Early Postnatal Alveolar Development in Neonatal Mice**  
Madoka Hayashi, Gang Chen, Joseph M. Collaco, Sharon A. McGrath-Morrow.

– Abstract 219

**10:30am The Combination of Nitric Oxide and Vitamin A Therapy Reverses Adverse Effects of Oxygen on Lung Endothelial Cells, Promoting Microvascular and Airway Development**  
Chelsea Douglass, Sana Mujahid, Heber C. Nielsen, Christiane E.L. Dammann, MaryAnn V. Volpe.

– Abstract 220

**10:45am Relationship between Respiratory Function and Feeding Desaturations in Preterm Infants**  
Manvi Bansal, Jack Sharp, Gloria Pryhuber, Clement Ren.

– Abstract 221

**11:00am Practice of Palivizumab for Prophylaxis of Respiratory Syncytial Virus Infections after Modified 2009 American Academy of Pediatrics Recommendations**  
Kruti Shah, Basu Hiregoudar, Anudeepa Sharma, M. Roger Kim.

– Abstract 222

## Plenary Session I

11:30pm–12:30pm

Overture

- 11:30 Plenary Lecture - Pulmonary Hypertension in Infancy: What's Known, What's New, and What's Next**  
Robin Steinhorn, MD, UC Davis School of Medicine, Sacramento, CA

## Fellows' Clinical Case Presentation Competition

12:40pm–1:40pm

Concerto A/B

We are happy to announce that back after last year's great success is the lunch time Clinical Case Competition Session. A total of 3 unknown cases will be presented, and an award for best case presentation will be announced Sunday Morning.

*Moderator: Kirsten Bechtel*

### The fellows presenting the unknown cases are:

Michael Alfonzo, Yale New Haven Children's Hospital  
Christopher Russo, St. Christopher's Hospital for Children  
Amy Sloane, Thomas Jefferson/Alfred I DuPont Hospital for Children

## Plenary Session II Mentor of the Year

1:45pm–2:30pm

Overture

- 1:45pm Mentor of the Year Presentation**  
**Next Generation Sequencing: What, When, Where, How Much, How Long, So What?**  
James Padbury, MD, Alpert Medical School of Brown University, Women & Infants Hospital, Providence, RI

## Plenary Session II Trainee Young Investigators

2:30pm–4:15pm

Overture

*Moderator: Vineet Bhandari*

- 2:30pm Norepinephrine Is a More Selective Systemic Vasoconstrictor Compared To Dopamine in Preterm Lambs**  
Praveen K. Chandrasekharan, Sylvia Gugino, Carmon M. Koenigskecht, Jayasree Nair, Munmun Rawat, Cheryl Allen, Bobby Mathew, Satyan Lakshminrusimha.  
– Abstract 223
- 2:45pm Outpatient Continuity of Care for Premature Infants: Impact on Healthcare Utilization and Primary Care Outcomes**  
Elizabeth Enlow, Michelle Macheras, Scott A. Lorch.  
– Abstract 224
- 3:00pm A Novel Strategy for Prevention of Neonatal Abstinence Syndrome**  
Samarth Shukla, Stephen Dewey, Mohamed Ahmed.  
– Abstract 225
- 3:15pm Break**

## Plenary Session II Faculty Young Investigators

3:30pm–4:15pm

Overture

*Moderator: Vineet Bhandari*

- 3:30pm Impact of Workday Factors on Physician Bias**  
Tiffani J. Johnson, Robert Hickey, Galen Switzer, Elizabeth Miller, Margaret Nguyen, Richard Saladino, Leslie R.M. Hausmann.  
– Abstract 226
- 3:45pm Mechanisms of Invariant Natural Killer T (iNKT) Cell Control of T-Lymphoma**  
Hamid Bassiri, Rupali Das, Peng Guan, Kim E. Nichols.  
– Abstract 227
- 4:00pm Transfusion Decreases Intestinal Oxygen Extraction in Anemic Preterm Lambs After Feeds**  
Jayasree Nair, Sylvia Gugino, Carmon Koenigskecht, Daniel Swartz, Satyan Lakshminrusimha.  
– Abstract 228

## Cardiac and Pulmonary Development

4:30pm–6:00pm

Aria A

*Moderator: Alvin Chin*

- 4:30pm The Long Noncoding RNA (LncRNA) Transcriptome Regulates Lung Development and Differentiation**  
Daniel T. Swarr, Michael Herriges, Michael Morley, MinMin Lu, Kathleen Stewart, Edward E. Morrissey.  
– Abstract 229
- 4:45pm Next Generation Sequencing Reveals Genes Uniquely Expressed in the Human Fetal Ductus Arteriosus**  
Cris Ebby, Tao Zhang, Connie L. Stephens, Ronald I. Clyman, Jeff Reese, Jason Z. Stoller.  
– Abstract 230
- 5:00pm Electron Transport Activity in Embryonic Hearts Requires the Formation of Supercomplexes**  
Gisela Beutner, George A. Porter.  
– Abstract 231
- 5:15pm The Role of Jun in Aortic Arch Artery Formation and Remodeling**  
Indu Subbaraj, Hua Pan, Tao Zhang, Jason Z. Stoller.  
– Abstract 232
- 5:30pm Hyperoxia Interacts With Circadian Disruption To Worsen Neonatal Lung Injury Through Modulation of Rev-erba**  
Shaon Sengupta, Guang Yang, Alexa Sadreameli, Hayato Go, Phyllis A. Dennery.  
– Abstract 233
- 5:45pm ErbB4-TTF-1 Signaling Pathway Is Perturbed in Hyperoxic Lung Injury Leading To BPD**  
Jeffrey Sumner, Chelsea Douglas, Nisha Agrawal, Anne Chetty, Gloria Pryhuber, MaryAnn V. Volpe, Claire Moore, Heber C. Nielsen, Christiane E.L. Dammann.  
– Abstract 234

4:30pm–6:00pm

Maestro B

Moderator: Susan Coupley

- 4:30pm Effect of Clinician and Family-Focused Decision Support on Missed Opportunities for HPV Vaccination Among Adolescent Girls: A Randomized Trial**  
Stephanie Mayne, Nathalie DuRivage, Kristen Feemster, Russell Localio, Robert Grundmeier, Alexander Fiks.

– Abstract 235

- 4:45pm Energy Drink Use and Associated Problem Behaviors in Adolescents in Our Urban Community**  
Richard D. Hallenbeck, Darlene Tenoyo, Kelly Cervellione, Patricia Burris-Warmoth, Susana Rapaport, Dakshayani Guttal.

– Abstract 236

- 5:00pm Use of a Text Messaging Intervention To Improve Caffeine Intake, Nighttime Technology Use and Sleep Duration in Adolescents**  
Christina J. Calamaro, Jared Annibale, Sarah Ratcliffe, Kevin Meyers.

– Abstract 237

- 5:15pm Socioeconomic Status and Religious Exemptions (RE) for Immunization Requirements in New York State (NYS) Public Schools, 2010-2012**  
Jessica A. Nadeau, Yun-Kuang Lai, Debra Blog, Louise A. McNutt, Jana Shaw.

– Abstract 238

- 5:30pm Association of Social Networking Site Use, Perceived Social Support and Depression in an Urban Community**  
Sonia Patel, Fernanda Kupferman, Susana Rapaport, Vinod Dhar, Jyotsna Gupta, Kelly Cervellione, Partha Chatterjee.

– Abstract 239

- 5:45pm Prevalence and Student Perceptions of Prescription Stimulant Misuse at an Ivy League College**  
Natalie Colaneri, Majnu John, Andrew Adesman.

– Abstract 240

## Health Services and Global Pediatrics

4:30pm–6:00pm

Maestro A

Moderator: Laurie Scheiner &amp; Hilda Slivka

- 4:30pm 5 Year Experience of the Region 2 Pediatric Environmental Health Specialty Unit (NY, NJ, PR and USVI)**  
Sonya Prasad, Damiris P. Agu, Lauren Zajac, Maya Leventer-Roberts, Cappy Collins, Kevin Chatham-Stephens, Alice Freund, Norm Zucker-  
 man, Bambi Fisher, Joel A. Forman, Phil J. Landrigan, Perry E. Sheffield,  
 Maida P. Galvez.

– Abstract 241

- 4:45pm Parent Satisfaction With Infant Care and Its Correlation To Health Care Attitudes and Clinical Outcomes**  
Elizabeth Enlow, Michelle Macheras, Scott A. Lorch.

– Abstract 242

- 5:00pm Correlates of Quantity and Quality of Child Communication During Pediatric Subspecialty Encounters**  
Vanessa Vigilante, Jobayer Hossain, Timothy Wysocki, Iman Sharif.

– Abstract 243

- 5:15pm Medical-Legal Partnership at Healthy Women/Healthy Babies Sites To Improve Health Status in Low-Income High-Risk Pregnant Women**  
Dan Atkins, Mawuna Gardesey, Vikrum Vishnubhakta, Shannon M. Heller, Robert Locke.

– Abstract 244

- 5:30pm The Role of E-Health Technology in Examining Healthcare Worker Performance of Integrated Management of Childhood Illness in Rural Kenya**

Omolara T. Uwemedimo, Moka H. Lantum.

– Abstract 245

- 5:45pm Where Do We Start? A Baseline Assessment for Establishing Health Promoting Schools (HPS) in Rural China**  
Xinshu She, Jenna Scholnick.

– Abstract 246

## Neonatal: ID and Immunology

4:30pm–6:00pm

Overture

Moderator: Naveed Hussain

- 4:30pm Effects of Phthalates on Expression of miRNA and Inflammatory Genes in Neonatal Neutrophils**  
Imran Malik, Faith E. Archer, Moiz Mohammed, Jehan Abukharmah, Barry Weinberger, Anna M. Vetrano.

– Abstract 247

- 4:45pm Anti-Cytokine Antibodies Reduce Ischemia-Related Cytokine Transport Across the Fetal Blood-Brain Barrier (BBB)**  
Aparna Patra, Grazyna B. Sadowska, Xiaodi Chen, Jiyong Zhang, Yow-Pin Lim, James F. Padbury, William A. Banks, Barbara S. Stonestreet.

– Abstract 248

- 5:00pm Mast Cell Mediator Levels in Tracheal Aspirate Fluid of Ventilated Preterm Neonates Increase With Time**  
Michael Thompson, Arul Veerappan, Barbara Summers, Stefan Worgall, Randi B. Silver.

– Abstract 249

- 5:15pm The Impact of Hyperoxia on T-helper (Th) Cell Function**  
Kimberly G. Remedios, Mohamed N. Ahmed, Hardik Patel, Angela Leon Hernandez, Barbara Sherry.

– Abstract 250

- 5:30pm Perinatal Protection Against Invasive Neonatal Candidiasis**  
Anoop S. Pulickal, Sonia S. Laforce-Nesbitt, Lois L. Hoyer, Joseph M. Bliss.

– Abstract 251

- 5:45pm Passive Immunization Against Group B *Streptococcus* Promotes Clearance from the Female Genital Tract**  
Jackie A. Baker, Tara M. Randis, Emma L. Lewis, Leah Byland, Adam J. Ratner.

– Abstract 252

## Neonatal: Pulmonary Animal Models

4:30pm–6:00pm

Concerto A/B

Moderator: Andrew Blaufox

- 4:30pm MicroRNA-196a Regulates Heme Oxygenase-1 Via Bach1 in Neonatal Hyperoxia-Induced Lung Injury**  
Hayato Go, Ping La, Guang Yang, Phyllis Dennery.

– Abstract 253

- 4:45pm Systemic Hypertension & Vascular Reactivity Following Neonatal Hypoxia-Hyperoxia Exposure in Adult Mice**  
Vasanth H.S. Kumar, Valerie Elbertson, Sylvia F. Gugino, Huamei Wang, Lori Nielsen, Satyan Lakshminrusimha.

– Abstract 254

- 5:00pm** **Role of Chemokines and Chemokine Receptors in the Disruption of T-Cell Development and Function After Hyperoxia Exposure in Neonatal Mice**  
Angela Leon Hernandez, Hardik Patel, Kimberly Remedios, Barbara Sherry, Mark Pezzano, Ahmed Mohamed.  
 – Abstract 255
- 5:15pm** **Nuclear Heme Oxygenase (HO)-1 Enhances 8-Oxoguanine Glycosylase (OGG)-1 Nuclear Translocation and Transcription and To Mediate DNA Repair after Hyperoxia**  
Monica L. Williams, Amal P. Fernando, Mekdes T. Yohannes, Phyllis A. Dennerly.  
 – Abstract 256
- 5:30pm** **Effect of Intermittent Hypoxia and Hyperoxia on HIF Expression & Angiogenesis in Newborn Mice**  
Valerie D. Elbersen, Lori C. Nielsen, Haumei Wang, Vasanth Kumar.  
 – Abstract 257
- 5:45pm** **Abstract Withdrawn**  
 – Abstract 258

## Neonatology Cardiology II

**4:30pm–6:00pm** **Rhapsody**

*Moderator: Kabir Abubakar*

- 4:30pm** **Time-to-Surgery and Pre-Operative Cerebral Hemodynamics Predict White Matter Injury in Neonates With Hypoplastic Left Heart Syndrome**  
Jennifer M. Lynch, Erin M. Buckley, Peter J. Schwab, Ann L. McCarthy, Madline E. Winters, David R. Busch, Rui Xiao, Susan C. Nicolson, Lisa M. Montenegro, J. William Gaynor, Arjun G. Yodh, Maryam Y. Naim, Daniel J. Licht.  
 – Abstract 259
- 4:45pm** **Cerebral Tissue Oxygenation Index and Lactate at 24 Hours Postop Are Predictive Markers of Survival and Neurodevelopmental Outcome (NDO) in Patients Undergoing Cardiac Surgery**  
Safwat A. Aly, David Zurakowski, Penny Glass, Kami B. Skurow-Todd, Richard Jonas, Mary Donofrio.  
 – Abstract 260
- 5:00pm** **Risk Stratification of Post-Patent Ductus Arteriosus (PDA) Ligation Cardiac Syndrome (PLCS) in Neonates**  
Edon Rabinowitz, Ali Ahrabi, Eliyahu Rosman, David Meyer, Shilpi Epstein, Susana Castro-Alcaraz.  
 – Abstract 261
- 5:15pm** **Sildenafil Use Increases Severe Retinopathy of Prematurity in Extremely Low Birth Weight Infants With BPD Associated Pulmonary Hypertension**  
Boriana Parvez, David Aboudi, Qiuhu Shi, Usha Krishnan, Deborah Friedman, Heather Brumberg.  
 – Abstract 262
- 5:30pm** **Nutritional Strategies To Overcome Growth Failure in Infants With Hypoplastic Left Heart Syndrome**  
Nicole T. Spillane, Sudha Kashyap, Ganga Krishnamurthy.  
 – Abstract 263
- 5:45pm** **Efficacy Endpoints and Clinical Trials Are Needed for Pulmonary Arterial Hypertension (PAH) in Children and Neonates**  
H. Sun, R.L. Ariagno, N.L. Stockbridge, D. Avant, W.J. Rodriguez, M.D. Murphy.  
 – Abstract 264

- 4:30pm–6:00pm** **Minuet**  
*Moderator: Sudha Kessler*
- 4:30pm** **Incidence of Epilepsy Following Perinatal Arterial Ischemic Stroke: A Prospective Cohort Study**  
R.N. N. Ichord, N. Gupta, M.Y. Uohara, L. Billingham, D.J. Licht, L.A. Beslow.  
 – Abstract 265
- 4:45pm** **Electroencephalogram (EEG) Background Normalization and Appearance of Spike and Wave Activity Following Propofol Administration**  
Gurcharanjeet Kaur, Salimah Walani, Lily Q. Lew, Susana Rapaport, Rami Grossmann.  
 – Abstract 266
- 5:00pm** **Tract-Based Spatial Statistics in Preterm-Born Infants Predicts Cognitive Outcome at 18 Months: Term Age Are Better Than Early Scans**  
Justin A. Foong, Emma G. Duerden, Anne Synnes, Vann Chau, Kenneth J. Poskitt, Ruth E. Grunau, Steven P. Miller.  
 – Abstract 267
- 5:15pm** **Regional Brain Biometrics at Term-Equivalent Age and Developmental Outcome in Extremely Low Birth Weight (ELBW) Infants**  
Launice A. Melbourne, Jonathan Murnick, Taeun Chang, Penny Glass, An N. Massaro.  
 – Abstract 268
- 5:30pm** **Ontogeny and Effects of Ischemia on Matrix Metalloproteinase (MMP) in Ovine Fetal Brain**  
Aparna Patra, Nicole Noronha, Grazyna B. Sadowska, Xiaodi Chen, Barbara S. Stonestreet.  
 – Abstract 269
- 5:45pm** **Use of Complementary and Alternative Medicine in Children and Adolescents With Seizure Disorder in an Urban Community**  
Rahul P. Sinha, Jose Serruya, Rami Grossmann, Michael J. Suh, Asri Yuliat, Fernanda Kupferman, Kelly Cervellione, Susana Rapaport, Partha Chatterjee.  
 – Abstract 270

## Saturday, March 22, 2014 Poster Session III & Reception Public Health and Prevention ~ Obesity ~ Underserved Populations ~Asthma ~ Neonatology

- 6:00pm–7:30pm** **Symphony Ballroom**
- 1** **Early Childhood Obesity Prevention: Comparing Mothers' and Clinicians' Priorities**  
R.S. Gruver, S. Virudachalam, M. Gerdes, J. Shults, AW Suh, CT Bishop, G.K. Kalra, S.N. Magge, P.A. DeRusso, T.J. Power, R.I. Berkowitz, A.G. Fiks.  
 – Abstract 271
- 2** **Using a Fresh Food Program To Address Hunger in a Food Desert**  
Hans B. Kersten, Nova Ashanti, Katie Tran, Kristen Shaw-Deitchman.  
 – Abstract 272
- 3** **Is the Primary Care Provider a Gateway To Improving Access To Mental Health Care for Asian Adolescents?**  
Sylvia W. Lim, Loretta Au, Melody Lao, Ellen J. Silver, Andrew D. Racine.  
 – Abstract 273



- 4 **Evaluation of a Pediatric Waiting Room Educational Slide-show in an Urban, Academic Primary Care Setting**  
Stephen M. Sandelich, Maria McColgan, Katie McPeak, Bruce Bernstein.  
– Abstract 274
- 5 **The Effects of an Educational Intervention on Physician Knowledge and Screening for Postpartum Depression**  
Suzanne Friedman, Ellis Rochelson, Leora Mogilner.  
– Abstract 275
- 6 **Abstract Withdrawn**  
– Abstract 276
- 7 **Complementary and Alternative Medicine Use in Women During Pregnancy: Do Their Healthcare Providers Know? A Cross-Sectional Survey Study**  
Lisa Strouss, Amy Mackley, Ursula Guillen, David Paul, Robert Locke.  
– Abstract 277
- 8 **The Pre-Participation Evaluation: A Survey of Pediatricians**  
Christa L. Miliarexis, Deborah Friedman, Joseph Resignato, Michael Gewitz.  
– Abstract 278
- 9 **Cardiovascular Risk Factors and Metabolic Abnormalities in Survivors of Pediatric Cancer: A Single Institution Report**  
Anna Hays, Hanna Moisander-Joyce, Jennifer Levine.  
– Abstract 279
- 10 **Do Parents of Adolescents Prefer Catch Up Immunization in the Emergency Department?**  
Salaheddin H. Elrokhsi, Bianca Musete, Noah P. Kondamudi.  
– Abstract 280
- 11 **Predictors of Early Contraceptive Discontinuation in Urban, Minority, Adolescent Women**  
Sofya Maslyanskaya, Rosy Chhabra, Susan M. Coupey, Unab I. Khan.  
– Abstract 281
- 12 **Clinician Documentation of Severe Early Childhood Obesity**  
Vidhu Thaker, Nandan Patibandla, Jonathan Bickel, Isaac Kohane, Ingrid A. Holm.  
– Abstract 282
- 13 **BMI Percentile as a Predictor of Exercise Performance in Both Cycle Ergometer and Treadmill Tests in Children**  
Soultana Kourtidou, Scott Ceresnak, Myles Schiller, Paulo Pina, David Rubin.  
– Abstract 283
- 14 **Sleep Disordered Breathing Is Associated With Increased Cardiometabolic Risk in Severely Obese Adolescents**  
Abigail R. Strang, Thao-Ly T. Phan, George Datto, Samuel Gidding, Aaron Chidekel.  
– Abstract 284
- 15 **Are Socio-Demographic Characteristics Associated With Success in an Open Access Family Weight Management Program?**  
Maria Victoria B. Pertubal, Pamela M. Diamantis, Ellen J. Silver, Paulo Pina, David H. Rubin, Adriana E. Groisman-Perelstein.  
– Abstract 285
- 16 **Primary Care Pediatricians' Adherence To Diabetes Screening Guidelines**  
Shanika R. Uduwana, Gayathri Mohanachandran Pillai Geetha Devi, Uri Belkind, David Rubin.  
– Abstract 286
- 17 **Newly Observed Risk Factor for Childhood Obesity: Parental Misperceptions May Play a Role in Body Mass Index (BMI) Percentiles in Low-Income Children**  
Jaime L. Pula, Michael Lamacchia.  
– Abstract 287
- 18 **Impact of Extra-Curricular Activities and Demographic Factors on BMI of School Students**  
Swathi Raman, Vigneswari Aravindalochanan, Vijay Viswanathan.  
– Abstract 288
- 19 **Type 1 Diabetes Education and Screening Program in Nepal**  
Sarah Coors, Graham Ogle, Holley Allen.  
– Abstract 289
- 20 **Progression of 6Q24 Transient Neonatal Diabetes Mellitus To Hypoglycemia**  
Sani M. Roy, Katherine Lord, Sara E. Pinney, Diva D. De Leon.  
– Abstract 290
- 21 **Association of Serum Vitamin D Levels With Risk for Surgical Pediatric Fractures**  
Barbara Minkowitz, Barbara Cerame, Eileen Poletick, Tim U. Leier, Sherri L. Luxenberg, Lior Fusman, Jonathan Chevinsky, Nicole D. Formoso, Renee Eng, Samantha Easton, Scott Musial, Ben H. Lee.  
– Abstract 291
- 22 **Extremely High Prevalence of DR3 in Somali Children With Type 1 Diabetes in the Twin Cities, Minnesota**  
Muna Sunni, Mohamed Farah, Jennifer Smith, Jennifer H. Kylo, M. Jennifer Abuzzahab, Melena D. Bellin, Brandon Nathan, Peter A. Gottlieb, Liping Yu, Sunanda Babu, Taylor Armstrong, Janelle A. Noble, Antoinette Moran.  
– Abstract 292
- 23 **Text2Connect: Technology Use Among Postpartum Women and Implications for Personal Health Record Utilization**  
Danis J. Copenhaver, Nadira Fernandez, David Vawdrey, Helen Kotschoubey, Melissa S. Stockwell.  
– Abstract 293
- 24 **Abstract Withdrawn**  
– Abstract 294
- 25 **Latino Parent Engagement During a Community-Based Center Asthma Education Fair**  
Antonio Riera, Agueda Ocasio, Lauren Krumeich, Patricia Goncalves, Karol H. Katz, Sandra Trevino, Federico E. Vaca.  
– Abstract 295
- 26 **Evaluating the Effectiveness of a Fresh Food Access Program in a Food Desert**  
Nova Ashanti, Katie Tran, Kristen Deitchman, Hans B. Kersten.  
– Abstract 296
- 27 **Off the Mat: Piloting a Mindfulness Based Curriculum With Adolescents in East Harlem**  
Maureen Braun, Brenda Levy, Leora Mogilner, Geoffrey Collins.  
– Abstract 297
- 28 **Assessing Legal Needs of Patients at a Federally Qualified Health Center**  
Milani Patel.  
– Abstract 298
- 29 **Utilization and Effectiveness of a Language Interpreter Service in the Pediatric Emergency Department for Hispanic Patients With Limited English Proficiency**  
Roy M. Vega, Martha Casamalhuapa.  
– Abstract 299

- 30 **The Relative Effect of Local Community Factors on 15-Day Asthma Readmission**  
Chen C. Kenyon, Chris Feudtner.  
– Abstract 300
- 31 **Comparing Asthma Severity in Children and Adolescents With and Without Allergies**  
Sandeep Puranik, Dakshayani Guttal, Salimah R. Walani, Susana Rapaport, Won H Baik-Han.  
– Abstract 301
- 32 **An Analysis of Attitude Toward Infant Sleep Safety and Sids Risk Reduction Behavior Among Caregivers of Newborns and Infants**  
Sarah Varghese, Abdur Ayoob, Denise Gasalberti, Cynthia Chang.  
– Abstract 302
- 33 **Azithromycin Use in Children Hospitalized With Acute Asthma Exacerbations**  
O. Fakeye, E. Fieldston, L.C. Douglas.  
– Abstract 303
- 34 **Safety and Efficacy of Continuous Albuterol in the Non-Intensive Care Setting**  
Chen C. Kenyon, Evan S. Fieldston, Xianqun Luan, Ron Keren, Joseph J. Zorc.  
– Abstract 304
- 35 **CHIT1 and Fungal-Sensitized Asthma in Children**  
Alfin G. Vicencio, Michael C. Stankewich, Kalliope Tsirilakis, Maria Teresa Santiago, David L. Goldman.  
– Abstract 305
- 36 **Comparison of Respiratory Status 3 Vs 4 Hours After Bronchodilator Therapy in Hospitalized Asthmatics**  
Vincent Uy, Alyson Smith, Paulo Pina, Rubin David, Daniel Erichsen.  
– Abstract 306
- 37 **Increased Ventilatory Demand During Sleep in Children With Cystic Fibrosis**  
Shruti M. Paranjape.  
– Abstract 307
- 38 **Novel, Miniature, Wireless Device (*microEEG*®) for Continuous, Multichannel EEG in Newborns**  
Zachary H. Ibrahim, Geetha Chari, Samah Abdel Baki, M. Roger Kim, Rudolph Parris, Vadim Bronshtein, Tauseef M. Raza, Joan Cracco, Jacob Aranda.  
– Abstract 308
- 39 **Chronologic Versus Corrected Age: Timing of Ultrasound Screening (US) for Developmental Dysplasia of the Hip (DDH) of Preterm Breech Infants**  
Janet Lee, Regina Spinazzola, Melissa Perrin, Nina Kohn, Ruth Milanaik.  
– Abstract 309
- 40 **Effect of Hemolysis and Bilirubin Genetic Variants on the Need for Phototherapy in ABO Incompatible COOMBS-Positive Infants**  
David L. Schutzman, Erica Gatien, Samuel Ajayi, Linnea M. Baudhuin, Ronald J. Wong.  
– Abstract 310
- 41 **Predicting Extubation Readiness in the Preterm Infant Using a Novel Test**  
Soji M. Varghese, Mariann Pappagallo, Janet Schwenn, Carrie-Ellen Briere, Elizabeth Brownell, Naveed Hussain.  
– Abstract 311
- 42 **The Concordance of Ultrasound (US) Technique Versus X-Ray (XR) To Confirm Endotracheal Tube (ETT) Position in Neonates**  
Rehman Chowdhry, Barbara Dangman, Joaquim Pinheiro.  
– Abstract 312
- 43 **Effects of Maternal Obesity on Breastmilk Composition and Infant Growth**  
P.G. Panagos, M.R. Nirupa, S. Sen.  
– Abstract 313
- 44 **Late Preterm Infants Differ Significantly from Full Term Infants in EEG Power in the Frontal Regions at Birth**  
Kimberly V. Parsons, Nina Burtchen, Michael M. Meyers, Rakesh Sahni, Marilyn Weindler, Philip Grieve, William P. Fifer.  
– Abstract 314
- 45 **The Physiologic Effects of Electrically Grounding (EG) Preterm Infants in the Neonatal Intensive Care Unit**  
Rohit Passi, Kim Doheny, Charles Palmer.  
– Abstract 315
- 46 **Duration of Respiratory Support (Invasive or Non-Invasive) Adversely Affects Outcomes of Extremely Low Birth Weight Infants**  
Huayan Zhang, Kevin C. Dysart, Douglas E. Kendrick, Michele C. Walsh, Haresh Kirpalani.  
– Abstract 316
- 47 **Reduction of Neonatal Nosocomial Infections Through a Statewide Quality Improvement Collaborative: the Massachusetts Experience**  
Munish Gupta, Alan Picarillo.  
– Abstract 317
- 48 **Ultrasound Screening for Developmental Dysplasia of the Hip for the Breech Infant Born <32 Weeks Gestational Age: A Pilot Study**  
Janet Lee, Regina Spinazzola, Melissa Perrin, Nina Kohn, Ruth Milanaik.  
– Abstract 318
- 49 **Effects of Umbilical Arterial Blood Sampling on Cerebral Tissue Oxygenation in Very Low Birth Weight Neonates**  
Jonathan P. Mintzer, Boriana Parvez, Gad Alpan, Edmund F. La Gamma.  
– Abstract 319
- 50 **Chronic Lung Disease in VLBW Infants in a Universal Health Care System**  
Lisa A. Peterson, Jay D. Kerecman, Nicole R. Dobson, Gregory Gorman, Elizabeth Hisle-Gorman.  
– Abstract 320
- 51 **Seasonal Variability of Maternal Exposure To UV Radiation during Pregnancy and Subsequent Risk of Early Mortality in Extremely Preterm Infants**  
Ariel A. Salas, Kelly A. Smith, Mackenzie D. Rodgers, Vivien Phillips, Namasivayam Ambalavanan.  
– Abstract 321
- 52 **Poor Oral Feeding at Discharge Is Common in Infants With Severe Bronchopulmonary Dysplasia**  
Julia B. Welc, Elizabeth C. Mitchell, Wei Wu, Joseph G. Donaher, Erik A. Jensen, Huayan Zhang, Haresh Kirpalani.  
– Abstract 322
- 53 **Contrast Enema and Risk of Sepsis in Premature Babies: A 12-Year Retrospective Study**  
Arpit Agarwal, Frederick Ogwara, Peter Homel, Danielle Laraque, Panayot Filipov.  
– Abstract 323

- 54 **Early Enteral Nutrition in Preterm Infants  $\leq$  1250 Grams: A Quality Improvement Initiative in a Neonatal Intensive Care Unit (NICU)**  
Nneka I. Nzegwu, Yogangi Malhotra, Richard A. Ehrenkranz.  
– Abstract 324
- 55 **Efficacy of a Sepsis Protocol in Limiting Antibiotic Days Among Babies without Bacteremia Admitted To a Level III NICU**  
Olivia B. Parks, Toby D. Yanowitz.  
– Abstract 325
- 56 **Abstract Withdrawn**  
– Abstract 326
- 57 **Qualitative Analysis: Development of a Classification System for Latent Safety Threats**  
George J. Bender, Beverley Robin.  
– Abstract 327
- 58 **Rapid Sequence Intubation(RSI) With Paralysis and Transient Impairment of Ventilation in Preterm Neonates**  
Praveen K. Chandrasekharan, Ananya Nrusimha, Changxing Ma, Vivien Carrion, Satyan Lakshminrusimha.  
– Abstract 328
- 59 **Moderate Oxygen Saturation Targets May Decrease Severe ROP without Increasing Mortality**  
Courtney E. De Jesso, Judith Palafoutas, Jayashree Ramasethu.  
– Abstract 329
- 60 **Retrospective Study of Feeding in Patients Who Receive Tracheostomy Prior To One Year of Age**  
Summer Elshenawy, Janet Lioy, Elizabeth Cottrill, Jaclyn Rosenzweig, Edward Hopkins, John Chuo, Steven Sobol, Sara DeMauro.  
– Abstract 330
- 61 **Abstract Withdrawn**  
– Abstract 331
- 62 **When Should Extremely Preterm Infants Be Transitioned from Incubator To Crib?**  
Roger Li, Richard J. Schanler.  
– Abstract 332
- 63 **Comorbidity of Nicotine Use and Methadone on Neonatal Outcome**  
Kristin McKenna, Maria Samohod, Janet Larson.  
– Abstract 333
- 64 **Lessons Learned from the Evacuation of the NYU NICU during Hurricane Sandy**  
Michael Espiritu, Uday Patil, Arpit Gupta, Heideh Matterson, Pradeep V. Mally.  
– Abstract 334
- 65 **Novel Non-Animal Simulation Trainer for Vital but Infrequently Performed Procedures: Pericardiocentesis and Supra-Pubic Aspiration**  
Ashish O. Gupta, Suna Seo, Sepideh Montazami.  
– Abstract 335
- 66 **Trends in Respiratory Support and Bronchopulmonary Dysplasia Among Extremely Preterm Infants**  
Suzanna Hirsch, Abigail B. Winston, Munish Gupta, Yvonne Y.G. Sheldon, Richard B. Parad, Linda J. Van Marter.  
– Abstract 336

## Sunday, March 23, 2014

### Poster Session IV

#### Human Milk or Breastfeeding ~ Pediatric Nutrition ~ Neonatology ~ Nephrology ~ Emergency Medicine ~ Media and Technology

7:30am–9:00am

Symphony Ballroom

- 1 **Lactation and Breast Feeding Knowledge Gap Identified in Incoming Pediatric Interns and Second Year Residents**  
Noeet Elitsur, Roger Edwards, Maria Blanco, MaryAnn Volpe.  
– Abstract 337
- 2 **Breastfeeding Toddlers & Preschoolers: Is It More Common With Boys or Does the Mass Media Sensationalize Nursing?**  
Alexis Tchaconas, Andrew Adesman.  
– Abstract 338
- 3 **Are We Ready for Healthy People 2020? Breastfeeding Continuation Rates and Barriers in an Underserved Community**  
Trishna Sisodraker, Puneet Arora, Anudeepa Sharma, M. Roger Kim, Mariana Szuchmacher, Divya Panneerselvam, Sindhu Mohandas.  
– Abstract 339
- 4 **Maternal Ratings of Factors That Influenced Their Decision To Breastfeed Beyond 1 Year of Age**  
Alexis Tchaconas, Andrew Adesman.  
– Abstract 340
- 5 **Support for Mothers' Decision To Breastfeed Beyond One Year of Age: Healthcare Providers, Family, and Friends**  
Alexis Tchaconas, Andrew Adesman.  
– Abstract 341
- 6 **Severe Hypercalcemia Associated With Subcutaneous Fat Necrosis**  
Vidhu Thaker, Daniel Shumer, George Taylor, Ari Wassner.  
– Abstract 342
- 7 **Abstract Withdrawn**  
– Abstract 343
- 8 **Plasma Levels of GLP-1 During Fasting and in Response To Nutrients in Children With Hypoglycemia**  
Diana M. Pimentel, Samir Sayed, Stephanie Givler, Andrea Kelly, Diva D. De Leon.  
– Abstract 344
- 9 **Liver Disease in Bardet-Biedl Syndrome**  
Leora Branfield Day, Claudia Quammie, Elise Heon, Binita M. Kamath.  
– Abstract 345
- 10 **Filling, Affordable and Nutritious (FAN): An Individualized Program To Assist Poorer Families in Obtaining Sufficient, Nutritious Food at a Reasonable Cost**  
Robert J. Karp, Isabelle Bollendorf, Christian Ngo, Spiros Mancoridis.  
– Abstract 346
- 11 **Simple Nutrition Screeners in the Pediatric Emergency Department (PED) Focus Nutrition Education for Obesity Prevention**  
Rahul A. Darwar, Renee M. Silvis, Shashank Vodapally, Natalie Smith, Mastaneh Sharafi, Valerie B. Duffy, Sharon R. Smith.  
– Abstract 347
- 12 **Serum Vitamin D Levels Among Adolescents Admitted To an Pediatric Acute Rehabilitation Facility**  
Ros Dalope.  
– Abstract 348

- 13 **Early Complimentary Feeding in Preterm Infants**  
Susan M. Braid, Jenny Bernstein, Nana Matoba.  
– Abstract 349
- 14 **Prevalence, Practice Patterns and Hematological Outcomes of Young Children Identified With Non-Anemic Iron Deficiency (NAID): Implications of Screening in Primary Care Settings**  
Kawsari Abdullah, Jonathon L. Maguire, Catherine S. Birken, Kevin E. Thorpe, Anthony J. Hanley, Darcy Fehlings, Patricia C. Parkin.  
– Abstract 350
- 15 **Electronic Health Record Monitoring Combined With a Collaborative Multidisciplinary Approach Decreases Duration of Hyperoxia in Neonates**  
Arlene Zamora, Beth Euston, Elaine Guilday, Deepthi Alapati.  
– Abstract 351
- 16 **Are Genetic Variants of the Platelet Activating Factor Pathway Associated With Necrotizing Enterocolitis?**  
Narendra Dereddy, Smita Prakash, Lynnette H. Kim, Nayan Patel, Johanna Calo, Umesh Paudel, Lance A. Parton.  
– Abstract 352
- 17 **Occult Blood in Stool Does Not Predict Occurrence of Necrotizing Enterocolitis in Preterm Infants**  
Dalal Taha, Ursula Nawab, Kristin McKenna, Zubair H. Aghai.  
– Abstract 353
- 18 **Utility of Measuring Direct Bilirubin at 24-72 Hours of Age in Neonates Admitted To the Neonatal Intensive Care Unit**  
Amy J. Sloane, Ursula S. Nawab, Kristin McKenna, Zubair H. Aghai.  
– Abstract 354
- 19 **Factors Affecting Nasal Intermittent Positive Pressure Ventilation (NIPPV) Failure and Impact on Bronchopulmonary Dysplasia (BPD) in Neonates**  
Paulomi Mehta, Jessica Berger, Emily Bucholz, Vineet Bhandari.  
– Abstract 355
- 20 **Cost-Effectiveness of Resuscitation at 23 Weeks' Gestation: Quantifying the Maternal-Fetal Conflict**  
Kathryn R. Robertson, J. Colin Partridge, Elizabeth E. Rogers, Geri O. Landman, Allison J. Allen, Aaron B. Caughey.  
– Abstract 356
- 21 **Patterns and Perceived Utility of Neurodevelopmental Screening With Magnetic Resonance Imaging in Preterm Infants**  
Suna Seo, Melissa Scala.  
– Abstract 357
- 22 **Using an Early CRP To Rule Out Neonatal Sepsis**  
Wendy L. Timpson, Joel H. Weiner.  
– Abstract 358
- 23 **Sustaining Improvement: Experience With Reducing Pharmacotherapy for Gastroesophageal Reflux in Preterm Infants**  
Katherine Rittner, Paul Visintainer, Stanley Konieczny, Rachana Singh.  
– Abstract 359
- 24 **Abstract Withdrawn**  
– Abstract 360
- 25 **How Good Are Simulation Model Lungs?**  
Sue Coffey Zern, Stephen Pearlman, Thomas Blackson, Joseph Ciarlo, Robert Locke.  
– Abstract 361
- 26 **Therapeutic Hypothermia for Hypoxic Ischemic Encephalopathy in Infants Less Than 36 Weeks Gestation**  
Sandeep Sadashiv, Zubair Aghai, Andrew Ellefson, Rochelle Haas, Ursula Nawab.  
– Abstract 362
- 27 **Efficacy of Bronchodilator Use in the Newborn Intensive Care Unit**  
Eilann C. Santo, Bridget K. Hughes, Lawrence M. Rhein.  
– Abstract 363
- 28 **Inconsistent Use and Unanticipated Adverse Effects With Premedication for Neonatal Intubations: An Unrecognized Area for Improvement**  
Neetu Singh, Gautham K. Suresh.  
– Abstract 364
- 29 **Using a Quality Improvement Project To Optimize Placement of Umbilical Catheters**  
Dimitrios Angelis, Lindsay R. Tellefsen, Endla K. Anday.  
– Abstract 365
- 30 **Neurodevelopmental Outcomes of Neonatal Extracorporeal Membrane Oxygenation (ECMO) Therapy**  
Lyndsey R. Garbi, Ruth Milanaik, Maria Mendoza, Anna Krevskaya, Susana Castro-Alcaraz.  
– Abstract 366
- 31 **Chorioamnionitis Increases Preterm Cord Blood CD4+ T Lymphocyte IL-6 and TNF- $\alpha$  Response Which Predicts the Development of Bronchopulmonary Dysplasia (BPD)**  
S. Shah, R. Misra, D. Fowell, H. Wang, K. Scheible, T. Stevens, S. Misra, H. Huyck, T. Mariani, G. Pryhuber.  
– Abstract 367
- 32 **Early Initiation of Nitric Oxide Improves Lung Morphology in a Lamb Model of Persistent Pulmonary Hypertension**  
Shetal I. Shah, Sushma Krishna, Sylvia Gugino, Satyan Lakshminrusimha.  
– Abstract 368
- 33 **Hyperoxia Downregulates Bone Morphogenetic Protein Receptor II (BMPRII) Expression in Human Pulmonary Arterial Endothelial Cells (HPAECs)**  
Jenda Arawiran, Susan Olson, Johanna Calo, Lance Parton.  
– Abstract 369
- 34 **Perinatal Characteristics Associated With Transfusion Related Necrotizing Enterocolitis**  
Jessica Dodge, Naveed Hussain.  
– Abstract 370
- 35 **Abstract Withdrawn**  
– Abstract 371
- 36 **Effect of Epidermal Growth Factor Receptor (EGFR) Kinase Inhibition on Long Term Src Kinase Activity Following Hypoxia in the Cerebral Cortex of Newborn Piglets**  
Lynn E. Zeits, Andy Wang, Tania Fontanez-Nieves, Shadi Malaeb, Maria Delivoria-Papadopoulos.  
– Abstract 372
- 37 **Impact of a Novel Predictive Model for Early-Onset Neonatal Sepsis Evaluation**  
James Haiyang Xu, Kimberly Dow.  
– Abstract 373
- 38 **Long Term Effect of Src Kinase Inhibition on Apoptotic Protease Activating Factor-1 (Apaf-1) Expression in the Cerebral Cortex of Newborn Piglets**  
Sam Ajayi, Dimitrios Angelis, Lynn E. Zeits, Aaron Pinninti, Maria Delivoria-Papadopoulos.  
– Abstract 374



- 39 **Effect of Hypoxia on Interleukin 1 beta (IL-1 $\beta$ ) Production in the Cerebral Cortex of Newborn Piglets**  
Dimitrios Angelis, Tania Fontanez-Nieves, Shadi Malaeb, Qazi Ashraf, Maria Delivoria-Papadopoulos.  
– Abstract 375
- 40 **Ontogeny of Nitric Oxide Pathway in Ovine Fetal Mesenteric Arteries: Correlation With Age at Onset of NEC**  
Jayasree Nair, Cheryl Allen, Lori Nielsen, Sylvia Gugino, Satyan Lakshminrusimha.  
– Abstract 376
- 41 **Spontaneous Intestinal Perforation: Maternal and Neonatal Factors**  
Nidhi Agarwal, Jaime R. Braverman, Mimi Kim, Alecia Thompson.  
– Abstract 377
- 42 **Growth Velocity Correlates With Pulmonary Hypertension Course in Neonates With Pulmonary Hypertension and Bronchopulmonary Dysplasia**  
Seema P. Anandalwar, Mary P. Mullen, Ronald V. Lacro, Lawrence M. Rhein.  
– Abstract 378
- 43 **Role of Chronic Diuretic Therapy in the Era of New Chronic Lung Disease: Clinical Value and Cost Effectiveness**  
Cydney Weiner, Paul Visintainer, Jennie Fleming, Robert Rothstein, Rachana Singh.  
– Abstract 379
- 44 **Abstract Withdrawn**  
– Abstract 380
- 45 **Urinary Biomarkers To Evaluate for AKI in Premature Neonates Exposed To Prenatal Indomethacin**  
Ahmad I. El Samra, Ayesa Mian, Marc Lande, Ronnie Guillet.  
– Abstract 381
- 46 **A Novel Definition of Acute Kidney Injury in Term Newborns With Hypoxic Ischemic Encephalopathy**  
Charu Gupta, An Massaro, Patricio Ray.  
– Abstract 382
- 47 **Reticulocyte Hemoglobin Levels in Pediatric CKD Patients**  
Hala Al Moaigel, Nick Barrowman, Elaine Leung, Janusz Feber, Anne Tsampalieros.  
– Abstract 383
- 48 **Renal Transplantation in Children With Cognitive Delay (CD)**  
Saritha Ranabothu, Sonya Lopez, Natalia Zelikovsky, Jorge Baluarte, Kevin Meyers.  
– Abstract 384
- 49 **The Impact of BUZZY® on Outpatient Venipuncture in Children**  
Hilary M. Whelan, Allen R. Kunselman, Neal J. Thomas, Jeffrey Moore, Robert F. Tamburro.  
– Abstract 385
- 50 **Pattern of Presentations Among Female Adolescent Patients With Gonorrhea and Chlamydia Infection in the Pediatric Emergency Department**  
Sarah B. Wren, Nicole C. Agcanas, David L. Goldman, Hnin Khine.  
– Abstract 386
- 51 **The Use of Capnography During Critical Events in Children**  
James M. Dodington, Adam Bullock, Aaron J. Donoghue, Melissa L. Langhan.  
– Abstract 387
- 52 **Non-Anogenital Injury after Sexual Assault in Pediatric Patients**  
Clare Stephens, Dustin Flannery, Amy Thompson.  
– Abstract 388
- 53 **Validation of a Risk Stratification Strategy To Identify Serious Bacterial Illness in Febrile Patients With Sickle Cell Disease Who Present To the ED in the Post PCV7 Era**  
Gal Altberg, Kathryn A. Koons, Ellen Silver, Hnin Khine, Jeffrey R. Avner.  
– Abstract 389
- 54 **Variation in Testing Tendencies among Pediatric Urgent Care Providers**  
Kaynan Doctor, Kristen Breslin, Melissa M. Tavarez, Deena Berkowitz.  
– Abstract 390
- 55 **Comparison of Clinical Management of Young Children With Simple Febrile Seizures in Association With Physicians' Training**  
Ernest G. Leva, Briana Fieramosca, Srividya Naganathan, Brittany Carey, Anna Petrova.  
– Abstract 391
- 56 **The Effect of Legislation on the Availability of Automated External Defibrillators Among Connecticut High Schools**  
Matthew D. Thornton, Lei Chen, Megan E. McCabe, Mark X. Cicero.  
– Abstract 392
- 57 **Disparities in the Availability of Automated External Defibrillators Among Connecticut Public High Schools**  
Matthew D. Thornton, Lei Chen, Megan E. McCabe, Mark X. Cicero.  
– Abstract 393
- 58 **Provider Barriers To Identification and Management of Pediatric Sepsis in Rwanda**  
Michael J. Alfonso, Angelique Karambizi, Gunjan K. Tiyyagura, Melissa L. Langhan, Lei Chen.  
– Abstract 394
- 59 **Caregiver Understanding of Discharge Instructions after Pediatric Emergency Visit in an Inner City Community Hospital.**  
Ravali Bandaru, Mavellin Lim, Sushma Ravirala, Noah P. Kondamudi.  
– Abstract 395
- 60 **Albuterol and Azithromycin Use for Acute Chest Syndrome in Children With Sickle Cell Disease Is Associated With Prolonged Hospital Length of Stay**  
Oluwakemi Badaki-Makun, William Pastor, Deepika S. Darbari, James M. Chamberlain.  
– Abstract 396
- 61 **Foreign Body Ingestion in Children; Are the Second Children Doomed?**  
Ioannis Koutroulis, David Eng, Panagiotis Kratimenos, Neha Jariwala.  
– Abstract 397
- 62 **Association of Playground Equipment on Childhood Injury**  
Ioannis Koutroulis, Dante Marconi, Panagiotis Kratimenos, Krystle Hernandez, Elliot Dubowitch, Andrew McInnes, Richard DeGroote.  
– Abstract 398
- 63 **Evaluation of a Pediatric Emergency Department Screening Tool for Prediction of Violence Exposure and Behaviors**  
Steven C. Rogers, Shadaab A. Kazi, Renee Silvis, Sharon R. Smith.  
– Abstract 399
- 64 **Review and Evaluation of Dermatopathology Assessments To Categorize Themes (REDACT) Study**  
Kruti Parikh, Albert C. Yan.  
– Abstract 400

Sunday, March 23

- 65** **Prevalence of Exergaming among Adolescents in an U.S. Inner-City Urban Region**  
Harini Racherla, Sudheer R. Gorla, Martha Casamaluapa, Savita Manwani, Peter Sherman, Richard Neugebauer, Ayoade Adeniyi, Stefan Hagmann, Priyadarshini Bhate.

– Abstract 401

- 66** **iHealthNYC: Assessment of Smartphones and Apps To Mobilize the Medical Home**  
Arunjot Singh, Sarah Wilkinson, Sandra Braganza.

– Abstract 402

## Plenary Session III Presentation of Young Investigator Awards

9:00am–10:15am

Overture

9:00am **Presentation of The Young Investigator Awards**

- 9:15am **Plenary Lecture - Is Food Allergy a Treatable Disease?**  
Robert Wood, MD, Johns Hopkins University School of Medicine, Baltimore, MD

10:15am **Break**

## Sunday, March 23, 2014 Platform Session

### Child Abuse and Neglect

10:30am–12:30pm

Maestro B

Moderator: Susan Coupley

- 10:30am **Domestic Child Sex Trafficking: the Need for Physician Education**  
Kanani E. Titchen, Eliza Chin, Iman Sharif.

– Abstract 403

- 10:45am **The Family Safe Zone: A Unique and Effective Multi-Level Positive Parenting Intervention in the Pediatric Setting**  
Stephen M. Sandelich, Maria McColgan, Bruce Bernstein.

– Abstract 404

- 11:00am **Trends in Abusive Head Trauma Rates and Economic Stress Indicators**  
Joanne N. Wood, Oludolapo Fakeye, Benjamin French, Kenneth Feldman, Anthony Fabio, Kathi L. Makoroff, Phillip Scribano, Rachel Berger.

– Abstract 405

- 11:15am **Development of Recommendations for Skeletal Survey in Young Children Presenting With Fractures**  
Joanne N. Wood, Oludolapo Fakeye, Chris Feudtner, Valerie Mondestin, Russell Localio, David M. Rubin.

– Abstract 406

- 11:30am **Do Mental Health Services Improve Behavioral Outcomes for Maltreated Children Who Remain at Home?**  
Hui-fai Fong, Benjamin French, David Rubin, Joanne Wood.

– Abstract 407

- 11:45am **Child-on-Child Sexual Abuse: A 10 Year Retrospective Review**  
Cynthia DeLago, Emily Dudek, Regina Yu, Beth Anne Cooper, Esther Deblinger, Martin Finkel.

– Abstract 408

- 12:00pm **Occult Fracture Screening in Young Injured Children at Pediatric and Non-Pediatric Hospitals**  
Joanne N. Wood, Benjamin French, Keshia Maughn, Oludolapo Fakeye, Lihai Song, Chris Feudtner.

– Abstract 409

- 12:15pm **Barriers To Recognizing and Reporting Child Abuse and Neglect (CAN) in the Emergency Department (ED)**  
Gunjan Tiyyagura, Marcie Gawel, Andrea Asnes, Jeanette R. Koziel, Kirsten Bechtel.

– Abstract 410

### Emergency Medicine II

10:30am–12:30pm

Maestro A

Moderator: Jesse Sturm

- 10:30am **Unique Role of Nuclear HO-1 in the Nuclear Transport of Nrf2: Implications for Oxidative Cytoprotection**  
Chhanda Biswas, Guang Yang, Mansa Muthu, Nidhi Shah, Ping La, Phyllis A. Dennerly.

– Abstract 411

10:45am **Abstract Withdrawn**

– Abstract 412

- 11:00am **Maintaining Normal Ventilation in Children Needing Bag-Valve Mask Ventilation: Should Capnography Be Standard of Care?**  
Heather J. Becker, Melissa Langhan.

– Abstract 413

- 11:15am **Use of the Pediatric Trauma Score To Triage Severity of Childhood Injury**  
Jennifer Fieber, Michael Caty, Kirsten Bechtel.

– Abstract 414

- 11:30am **Use of Bedside Ocular Ultrasound To Identify Optic Disc Swelling in Children**  
Ronald F. Marchese, Rakesh D. Mistry, Gil Binenbaum, Richard J. Scarfone, Grant T. Liu, Ashley L. Woodford, Aaron E. Chen.

– Abstract 415

- 11:45am **The Impact of Traumatic Lumbar Puncture on Hospitalization Rate for Febrile Infants 28 To 60 Days of Age**  
Elizabeth W. Pingree, Amir A. Kimia, Lise E. Nigrovic.

– Abstract 416

- 12:00pm **Are Labs and Imaging Indicated in Pediatric Patients Who Present To the Emergency Department With Back Pain?**  
Talia M. Brooks, Lana M. Friedman, Renee M. Silvis, Matthew D. Milewski.

– Abstract 417

- 12:15pm **EMS for Children Program Manager Survey on Education of Prehospital Providers**  
Thuy L. Ngo, Karen Belli, Manish I. Shah.

– Abstract 418

### General Pediatrics: Obesity

10:30am–12:30pm

Minuet

Moderator: Adam Spanier

- 10:30am **Peak Body Mass Index (BMI) in Infancy and Childhood Growth in a Multi-Ethnic Cohort**  
Sani M. Roy, Rui Xiao, Frank Mentch, Rosetta Chiavacci, Hakon Hakonarson, Babette Zemel, Struan F.A. Grant, Shana E. McCormack.

– Abstract 419

- 10:45am Association Between Sleep Stages and Hunger Scores in Children Referred for Polysomnography**  
Rajeswari Arun, Daniel Erichsen, David H. Rubin.  
– Abstract 420
- 11:00am School-Based, Wellness Programs May Improve Students' Anthropometric Outcomes and Prevent or Reverse Childhood Obesity: A Pilot Study**  
Jaime L. Pula, Michael Lamacchia.  
– Abstract 421
- 11:15am Obesity as a Risk Factor for Urinary Tract Infection in Children**  
William R. Grier, Panagiotis Kratimenos, John P. Gaughan, Ioannis Koutroulis.  
– Abstract 422
- 11:30am A Pilot Evaluation of the Boy Scouts of America Weight-Loss Camp for Obese Adolescents**  
Marsha B. Novick, Erik Lehman, Ronald J. Williams.  
– Abstract 423
- 11:45am Extremes of Body Mass Do Not Affect Outcomes in Critically Injured Children**  
Glenn Stryjewski, Jennifer Gauntt, Heather Kulp, Zhongcui Gao, Diane Hochstuhl, Sean Elwell, Robin Brennan, Stephen Murphy.  
– Abstract 424
- 12:00pm The Impact of Active Video Gaming on Weight in Youth: A Meta-Analysis**  
Risa C. Eilbaum, Karen M. Sorensen, Peter F. Belamarich.  
– Abstract 425
- 12:15pm Associations Between Neighborhood Physical Activity Resource Characteristics and Where Urban Minority Children Play**  
Kathleen McGovern, Maida P. Galvez, Elizabeth Knuff, Kevin Chatham-Stephens, Jessica Feldman, Alyson Beha, Susan Teitelbaum, Mary S. Wolff, Barbara Brenner.  
– Abstract 426

## Hematology and Oncology

**10:30am–12:30pm** **Aria A**

*Moderator: Mitchell Cairo*

- 10:30am Incidence and Risk Factors for Hospital-Acquired Venous Thromboembolism in Pediatric Patients**  
Amy B.W. LaMothe, Kathleen B. Kopczka, Evan R. Horton, Alexander Kneee, Satkiran S. Grewal.  
– Abstract 427
- 10:45am Association of Common Childhood Infections and Anemia in Children Between One and Two Years of Age**  
Pradeep Bangalore Prakash, Fazlul Yusuf, Salimah Walani, Susana Rapaport, Partha Chatterjee.  
– Abstract 428
- 11:00am Hippo Growth-Control Pathway Regulates MicroRNA Biogenesis and Links Global MicroRNA Suppression To Cancer**  
Masaki Mori, Fernando D. Camargo, Richard I. Gregory.  
– Abstract 429
- 11:15am Anti-CD20 Chimeric Antigen Receptor (CAR) Modified Expanded Natural Killer (NK) Cells Significantly Mediate Rituximab (Rx) Sensitive and Resistant Burkitt Lymphoma (BL) Regression and Improve Survival in Human BL Xenografted NSG Mice**  
Ashlin Yahr, Yaya Chu, Janet Ayello, Carmella van de Ven, Matthew Barth, Myron Czuczman, Mitchell S. Cairo.  
– Abstract 430

- 11:30am Improving Time To First Dose of Parenteral Antibiotic in Febrile Immunocompromised Children: A Single Institution Collaborative Project**  
Joeli Hettler, Teresa Kanev, Elizabeth Gale, Satkiran Grewal.  
– Abstract 431
- 11:45am DLEU1 Knockout by Transcription Activator-Like Effector Nucleases (TALENs) Inhibits Apoptosis in Pediatric Burkitt Lymphoma (PBL): DLEU1 May Serve as a Tumor Suppressor Gene in PBL**  
Timmy O'Connell, Changhong Yin, Janet Ayello, Carmella van de Ven, Sanghoon Lee, Mitchell Cairo.  
– Abstract 432
- 12:00pm Cranial Irradiation Therapy for Pediatric T-Lineage Acute Lymphoblastic Leukemia: A Systematic Review and Meta-Analysis**  
Michael Kelly, Thomas Trikalinos, D. Matthew Gianferante, Issa Dahabreh, Susan Parsons.  
– Abstract 433
- 12:15pm Respiratory Syncytial Virus (RSV) Infection in Pediatric Cancer and Hematopoietic Stem Cell Transplant (HSCT) Patients**  
Mansi Sachdev, Melanie Comito, George McSherry, Kevin Mulieri, Lindsay Trout, Brooke Soulier, Wallace Greene, Jane Black, Tammy Angeletti.  
– Abstract 434

## Neonatology: General

**10:30am–12:30pm** **Overture**

*Moderator: Robert Green*

- 10:30am Variation in Withdrawal Discussions in Infants<28 Weeks Gestation Across US Centers**  
J. Riehl, D. Munson, J. Langer, S. DeMauro, E. Bell, B. Poindexter, C. Fortney, R. Seabrook, J. Tyson, A. Dworetz, G. Natarajan, S. Shankaran, B. Vohr, R. Higgins, A. Das, B. Stoll, H. Kirpalani.  
– Abstract 435
- 10:45am International Comparison of Guidelines for the Management of Extremely Premature Deliveries: A Systematic Review**  
Ursula Guillen, David Munson, Constance Williams, Ann Jefferies, Thor Hansen, Shigeharu Hosono, Susan Albersheim, Elaine Boyle, Kei Lui, Brian Darlow, Haresh Kirpalani.  
– Abstract 436
- 11:00am Mercury, Lead and Cadmium Exposure from Transfusions in the VLBW Infant**  
Alison J. Falck, Justine Cummins-Oman, Dina El Metwally, Cynthia F. Bearer.  
– Abstract 437
- 11:15am Small for Gestational Age Newborn Infants Have Lower Cord Blood Irisin Levels Compared To Appropriate and Large for Gestational Age Infants**  
Kyoung Eun Joung, Helen Christou, Kyung-Hee Park, Andreas Filippaios, Fadime Dincer, Christos S. Mantzoros.  
– Abstract 438
- 11:30am Vibro-Tactile Stimulation: A Potential Therapeutic Intervention for Neonatal Abstinence Syndrome**  
Elisabeth Bloch-Salisbury, Ian Zuzarte, David Paydarfar, Francis Bednarek.  
– Abstract 439
- 11:45am Effectiveness of Routine TORCH Screening for IUGR Infants**  
Craig Guerin, Micheal M. Espiritu, Elena Wachtel, Sean M. Bailey, Pradeep V. Mally.  
– Abstract 440

12:00pm Abstract Withdrawn

– Abstract 441

12:15pm **Does Hypoxia Evoke Enkephalin Synthesis and Release from Chromaffin Cells? Investigating a Novel Stress Response To Acute Hypoxia**

Alexa S. Calero, Marian J. Evinger.

– Abstract 442

## Neonatology: Pulmonary Animal Studies

10:30am–12:30pm

Concerto A/B

Moderator: Robyn Cohen & Alfrin Vicencio (Didi)

10:30am **Significance of Apnea at Birth Following Cesarean Section under General Anesthesia**

Munmun Rawat, Sylvia F. Gugino, Daniel D. Swartz, Carmon Koenigsknecht, Bobby Mathew, Jayasree Nair, Praveen K. Chandrasekharan, Satyan Lakshminrusimha.

– Abstract 443

10:45am **Are Single Nucleotide Polymorphisms of Matrix Metalloproteinase Proteinase-9 Gene Associated With BPD in ELBW Infants?**

Umesh Paudel, Narendra Dereddy, Nayan Patel, Joseph Tilliard, Johanna Calo, Divya Chhabra, Lance Parton.

– Abstract 444

11:00am **Impact of Hyperoxia and Barotrauma on Pulmonary Artery Smooth Muscle Cells (PASMC): Physiologic and Molecular Correlates**

Joanna D. Costa, Yan Zhu, Deepthi Alapati, Victoria Maduskuie, Paul Fawcett, Jay S. Greenspan, Thomas H. Shaffer.

– Abstract 445

11:15am **Impact of Early Extubation and Reintubation on the Incidence of Bronchopulmonary Dysplasia in Neonates**

Jessica Berger, Paulomi Mehta, Vineet Bhandari.

– Abstract 446

11:30am **Use of High Flow Nasal Cannula in Preterm Infants: Superiority To CPAP?**

Dalal Taha, Michael Kornhauser, Jay S. Greenspan, Zubair H. Aghai.

– Abstract 447

11:45am **Resuscitator's Perceptions and Time for Corrective Ventilation Steps during Simulated Neonatal Resuscitation**

Vinay Sharma, Bobby Mathew, Satyan Lakshminrusimha, Vivien Carrion.

– Abstract 448

12:00pm **Hemodynamic and Respiratory Variables With Resuscitation Adhering To Oxygen Saturation Guidelines from Neonatal Resuscitation Program (NRP)**

Satyan Lakshminrusimha, Bobby Mathew, Jayasree Nair, Sylvia F. Gugino, Carmon Koenigsknecht, Munmun Rawat, Praveen K. Chandrasekharan, Daniel D. Swartz.

– Abstract 449

12:15pm **Hemodynamics and Gas Exchange at Varying Depth of Chest Compressions During Cardiopulmonary Resuscitation in Newborn Piglets**

Bobby Mathew, Melissa F. Carmen, Jayasree Nair, Daniel D. Swartz, Sylvia F. Gugino, Carmon Koenigsknecht, Vinay Sharma, Satyan Lakshminrusimha.

– Abstract 450

## Underserved Populations

10:30am–12:30pm

Rhapsody

Moderator: Laurie Scheiner & Hilda Slivka

10:30am **Children's Home Sleep Environment and Sleep Problems in an Inner City Practice**

Hilda Kabali, Michelle King, Stefan F. Mandakovic, Casandra Arevalo, Matilde Irigoyen.

– Abstract 451

10:45am **A Pilot Academic-Community Partnership To Advance the DC Healthy Schools Act**

Nisha Narayanan, Jonathan Tatum, Margarita Ramos, Jessica Kim, Nisha Punatar, Michele Mietus-Snyder.

– Abstract 452

11:00am **Family-Centered Rounds Among Spanish-Speaking Families**

David I. Rappaport, Johan Tijerino, Ashley Anttila, Nusrat Zaman, Iman Sharif.

– Abstract 453

11:15am Abstract Withdrawn

– Abstract 454

11:30am **Health Status of Newly Resettled Refugee Children in Philadelphia, PA**

Fredrick Dapaah-Siakwan, Sonia Mehra, Morgan Leafe.

– Abstract 455

11:45am **Creating a Hunger-Free Hospital Model To Reduce Hunger and Promote Healthy Eating**

Hans B. Kersten, Kirsten Johnson-Moore, Elizabeth Oquendo.

– Abstract 456

12:00pm **Weight Trajectory in Refugee Children After Immigration To the United States**

Akhila Vasthare, Thao-Ly Phan, Jobayer Hossain, Sandra Hassink, Christopher Raab, George Datto.

– Abstract 457

12:15pm **Are We Following Guideline Recommendations for Allergy Testing of Inner-City Children With Asthma?**

Karen L. Warman, P. Karina Tulipano, Ellen J. Silver.

– Abstract 458



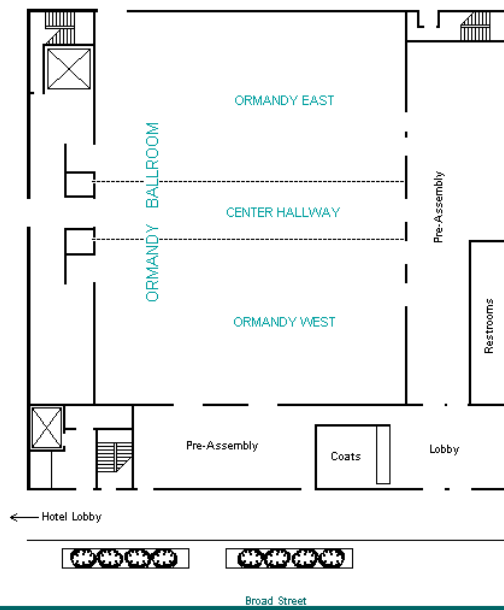
# Abstract Presenter Index

Index numerals refer to the Abstract number, not the page number.  
Only Presenting Abstract Authors are included in the Index.

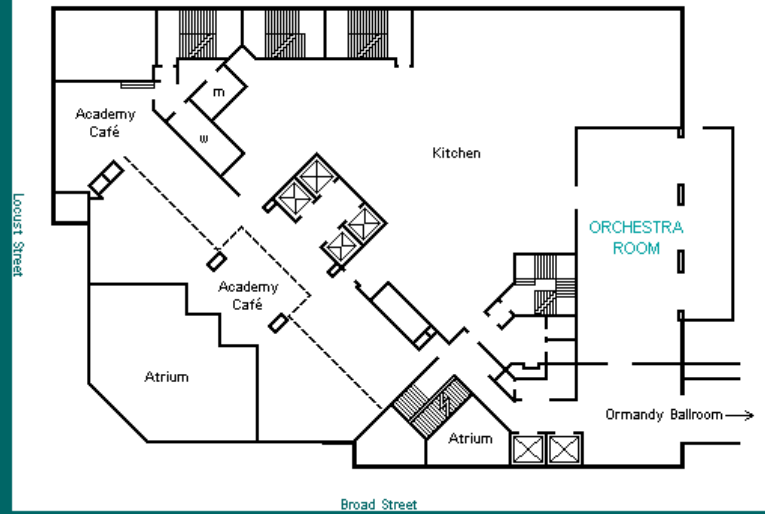
Abdullah, Kawsari	350	Doupnik, Stephanie K.	27	Locke, Robert	361	Roy, Sani M.	290, 419
Adesman, Andrew	338	Drago, Bonny B.	184	Lynch, Jennifer M.	259	Sachdev, Mansi	434
Agarwal, Arpit	323	Dunbar, Julie	200	Madore, Laura S.	167	Sachdeva, Shagun	161
Agarwal, Nidhi	377	Ebby, Cris	230	Malaeb, Shadi	76, 169, 210	Sadashiv, Sandeep	36, 87, 362
Agarwal, Nisha	70	Eilbaum, Risa C.	425	Malik, Imran	247	Sadreameli, Alexa R.	114
Agthe, Alexander G.	79	El Samra, Ahmad I.	381	Mandhani, Nandita	106	Salas, Ariel A.	321
Ahmed, Mahmuda M.	192	Elberson, Valerie D.	56, 257	Marchese, Ronald F.	415	Samango-Sprouse, Carole A.	139
Ajayi, Sam	174, 374	Elitsur, Noeet	337	Marlin, Valerie	107	Samohod, Maria	88
Akenroye, Ayobami T.	148	Ellefson, Andrew M.	92	Maslyanskaya, Sofya	281	Sandelich, Stephen M.	274, 404
Al Moaigel, Hala	383	Elrokhsi, Salaheddin H.	280	Mathew, Bobby	450	Santo, Eilann C.	363
Alapati, Deepthi	351	Elshenawy, Summer	330	Mathur, Deepli	68	Sarvis, Astrid B.	69
Alexander, Chandran P.	45	Elumalai, Jagadish	51	Mayne, Stephanie	235	Scheid, Annette	441
Alfonzo, Michael J.	394	Engelhardt, Krystin A.	78	Mbi Ndakor, Sussan	371	Schutzman, David L.	50, 310
Ali, Ather	26	Enlow, Elizabeth	224, 242	McKenna, Kathryn	204	Sebastian, Teena	343
Altberg, Gal	389	Erdei, Carmina	178	McKenna, Kristin	333	Seither, Katelyn M.	3
Aly, Safwat A.	260	Falck, Alison J.	437	McKenna, Kristin J.	98	Sengupta, Shaon	58, 233
Anandalwar, Seema P.	53, 54, 378	February, Melissa	208	McMahon, Ann W.	80	Seo, Suna	213, 357
Angelis, Dimitrios	75, 375	Fein, Daniel M.	146	Meerkov, Meera S.	108	Shah, Birju A.	63
Arawiran, Jenda	369	Fieldston, E.	195	Mehra, Sonia	129, 160	Shah, Kruti	222
Argentieri, Jennifer A.	35	Fieramosca, Briana	391	Mehta, Paulomi	355	Shah, S.	367
Arshad, Arslan	179	Florito, Theresa M.	126	Melbourne, Launice	41	Shah, Shetal I.	368
Arun, Rajeswari	420	Flannery, Dustin D.	57	Melbourne, Launice A.	47, 268	Shah, Syed Asim A.	127
Ashanti, Nova	296	Flibotte, John J.	207	Memon, Naureen	116	Sharma, A.	100
Atkins, Dan	244	Follansbee, Christopher W.	6	Meyers, Jeffrey M.	164	Sharma, Vinay	29, 448
Badaki-Makun, Oluwakemi	396	Fong, Hiu-fai	407	Mintzer, Jonathan P.	319	She, Xinsu	246
Baker, Jackie A.	252	Fontanez-Nieves, Tania D.	82	Mohammed, Moiz	112	Sherman, Joshua M.	149
Bales, Nathaniel D.	157	Foong, Justin A.	267	Morales, Liliana	89	Shillingford, Kendall	113
Ballesteros, Juan	173	Fox, Jenny R.	67	Mori, Masaki	429	Shoar, Zohreh	155
Bamat, Nicolas	90	Friedman, Suzanne	275	Morrissey, Kirsten L.	147	Shukla, Samarth	225
Banda, Harriet	38	Furloria, Mamta	187	Mullan, Paul C.	23	Siegel, Allison J.	134
Bandaru, Ravali	395	Funderburk, Apryle	62	Nadeau, Jessica A.	238	Singh, Arunot	402
Bangalore Prakash, Pradeep	428	Gadomski, Anne M.	1	Nair, Jayasree	228, 376	Singh, Neelu	364
Bansal, Manvi	221	Gandhi, Shiv D.	20	Narayana, Sri	102, 166	Singhal, Vibha	189
Bassiri, Hamid	227	Garbi, Lyndsey R.	366	Narayanan, Nisha	452	Sinha, Rahul P.	270
Batista Flores, Vanessa	91	Gauntt, Jennifer	424	Nelson, Courtney	31	Sisodraker, Trishna	339
Bechtel, Kirsten	414	Gayen nee Betal, Suhita	77, 104	Newell, Joseph A.	7	Skarzynska, Malgorzata	11
Beck, Jennifer	258	Gianferante, D. Matthew	433	Newsom, Diana	154	Sloane, Amy J.	354
Becker, Heather J.	413	Glaessner, Andrea M.	276	Ngo, Thuy L.	418	Spanier, Adam J.	119
Beltempo, Marc	93, 326	Gluck, Karen	163	Novick, Marsha B.	423	Spillane, Nicole T.	263
Bender, George J.	327	Go, Hayato	253	Nuyt, Anne-Monique	46	Srayyih, Maytham	95
Bennett, Jessica A.	34	Goenka, Sonal	83	Nzegwu, Nneka I.	99, 324	Stephens, Clare	388
Bennett, Simone	454	Gogcu, Sema	39	O'Brien, Caitlin E.	218	Strang, Abigail R.	284
Berenson, Jessica Z.	137	Greenberg, Adam S.	9	O'Connell, Timmy	432	Strouss, Lisa	277
Berger, Jessica	446	Greubel, Andrew J.	10	Obioha, Obianuju	140	Su, Cynthia	294
Berkwitz, Adam	197	Grewal, Satkiran	431	Ogwara, Frederick	117	Subbaraj, Indu	232
Bernstein, Bruce	131	Grewal, Satkiran S.	427	Oh, Djin-Ye	199	Sumner, Jeffrey	234
Bhattacharya, Jyotsna	2	Grier, William R.	422	Oji-Mmuo, Christiana N.	64	Sun, H.	43, 264
Billingshurst, L.	265	Grossman, Matthew R.	130	Ola, Olayemi	105	Sunni, Muna	292
Biswas, Chhanda	411	Gruver, R.S.	271	Oliveri, Laura J.	159	Supapannachart, Rarinthip J.	72
Blau, Jonathan	55	Guerin, Craig	440	Ortiz, Michael V.	5	Swar, Daniel T.	229
Bloch-Salisbury, Elisabeth	439	Guillen, Ursula	436	Osborn, Rachel R.	28	Taha, Dalal	37, 109, 353, 447
Braid, Susan M.	71, 349	Gupta, Ashish O.	335	Palmeri, Lynn C.	212	Tauber, Kate	215
Branfield Day, Leora	345	Gupta, Charu	382	Panagos, P.G.	313	Tchaconas, Alexis	135, 340, 341
Braun, Maureen	297	Gupta, Munish	317	Paranjape, Shruti M.	307	Tellefsen, Lindsay R.	96, 365
Brooks, Talia M.	417	Hallenbeck, Richard D.	236	Parikh, Kruti	400	Thaker, Vidhu	282, 342
Bruno, Christie J.	65	Hayashi, Madoka	219	Parikh, Pratik	211	Thompson, Michael	249
Bundhoo, Arvin S.	60	Hays, Anna	279	Parks, Olivia B.	325	Thornton, Matthew D.	392, 393
Burtman, Elizabeth	190	Hazrati, Sahel	138	Parsons, Kimberly V.	314	Timpson, Wendy L.	358
Cai, Amanda	30	Hernandez, Angie	196	Parvez, Boriana	262	Titcher, Kanani E.	403
Cai, Amanda W.	162	Heyden, Caitlin	158	Passi, Rohit	315	Tiyyagura, Gunjan	410
Calamaro, Christina J.	237	Hirsch, Suzanna	336	Patel, Milani	298	Uduwana, Shanika R.	286
Calero, Alexa S.	442	Hoffman, Laurie	177	Patel, Sonia	239	Uwemedimo, Omolara T.	245
Canares, Therese	24	Hollinger, Nicole	73	Patil, Uday	334	Uy, Vincent	306
Carey, Brittany M.	194	House, Samantha A.	74	Patra, Aparna	66, 248, 269	Vachhani, Avani	59
Carrión, Vivien	216	Hughes, Naomi T.	21	Paudel, Umesh	444	Vargas, Diana P.	125
Casamalhuapa, Martha	299	Ibrahim, Zachary H.	308	Pearlman, Stephen A.	86	Varghese, Sarah	302
Cerame, Barbara	291	Iyer, Maya S.	14	Perretta, Laura	8	Varghese, Soji M.	311
Chandrasekharan, Praveen	183, 223, 328	Johnson, Tiffani J.	226	Pertubal, Maria Victoria B.	285	Vashare, Akhila	457
Chang, Catherine	209	Joung, Kyoung Eun	438	Peterson, Lisa A.	320	Vicencio, Alfin G.	305
Chang, Catherine L.	42	Kabali, Hilda	451	Petroski, Tara M.	32	Vigilante, Vanessa	243
Chen, Jeffrey N.	145	Karp, Robert J.	346	Pimentel, Diana M.	344	Vinci, Alexandra	101
Chicaiza, Henry	15	Kataria, Anglina	120	Pingree, Elizabeth W.	416	Vitberg, Yaffa M.	16
Chime, Nnenna O.	185	Kaur, Gurcharanjeet	266	Piraquive, Jacquelyn	180	Waldman, Lindsey	151
Chow, Brian D.W.	202	Kehinde, Folasade	4	Polikoff, Lee	217	Wang, Andy C.	172, 205
Chowdhry, Rehman	312	Keir, Amy K.	331	Porter, George A.	231	Wang, Jessica W.	193
Christ, Lori	176	Kenyon, Chen C.	300, 304	Pothiwala, Rubina	94	Warman, Karen L.	458
Colaneri, Natalie	133, 240	Kersten, Hans B.	272, 456	Pound, Catherine M.	198	Wasserman, Emily	182
Coors, Sarah	289	Khaira, Sharmeel	165	Prakash, Smita	352	Weiner, Cydney	379
Copenhaver, Danis J.	293	Killion, Jeremy	22	Prassad, Sonya	241	Welc, Julia B.	322
Coronado Munoz, Alvaro J.	121, 150	Kim, Lena J.	115	Pula, Jaime L.	287, 421	Wellington, Abigail C.	44
Cortis, Carmen T.	19	Kirtok, Necla	61	Pulickal, Anoop S.	251	Whelan, Hilary M.	385
Costa, Joanna D.	445	Klatte, J. Michael	203	Puranik, Sandeep	301	White, Kimberly M.R.	118
Cruz, Mario	25	Klein, Jason	191	Rabinowitz, Edon	261	Whitney, Rachel E.	17
Dalope, Ros	132, 348	Knuff, Elizabeth	426	Racherla, Harini	401	Wild, Katherine T.	103
Danzer, Enrico	142, 143	Kourtidou, Soultana	283	Raman, Swathi	288	Wilkinson, Robert D.	18
Dapaah-Siakwan, Fredrick	170, 455	Koutroulis, Ioannis	397, 398	Ranabothu, Saritha	384	Williams, Monica L.	256
Darwar, Rahul A.	347	Kratimenos, Panagiotis	84, 128	Rappaport, David I.	453	Witcher, Teresa J.	171
De Jesso, Courtney E.	329	Kumar, Vasanth H.S.	254	Rawat, Munmun	214, 443	Woo, Hyung C.	360
DeLago, Cynthia	408	Kum-Nji, Philip	136	Remedios, Kimberly G.	250	Wood, Joanne N.	405, 406, 409
Desai, Purnahamsi V.	122, 124	Kurtz, Jennifer K.	85	Resignato, Joseph	278	Wren, Sarah B.	386
Deshmukh, Hitesh	97, 168	Lado, Juan J.	188	Riehl, J.	435	Wright, Shelton W.	186
Di Guglielmo, Matthew D.	12	Lahoti, Amit	156	Riera, Antonio	295	Xu, James Haiyang	373
Dixon, Meredith C.	81	Lainwala, S.	40	Rittner, Katherine	359	Yahr, Ashlin	430
Dobkin, Julie	152	Lakshminrusimha, Satyan	449	Robertson, Kathryn R.	356	Yankowski, Christine	206
Doctor, Kaynan	390	Langs-Barlow, Allison	123, 201	Rogers, Steven C.	399	Yeh, Jennifer	52
Dodge, Jessica	370	Lee, Janet	309, 318	Roizen, Jeffrey	153	Younis, Usama	110
Dodington, James M.	387	Leon Hernandez, Angela	255	Rong, Qi	48	Zeits, Lynn E.	372
Dolansky, Gillian	412	Li, Clayton	141, 144	Roskind, Cindy G.	33	Zhang, Huayan	111, 316
Douglas, L.C.	13, 303	Li, Roger	332	Ross, Gail S.	175	Zurca, Adrian D.	181
Douglass, Chelsea	220	Lim, Sylvia W.	273	Rothstein, Rachel	49		

# Notes

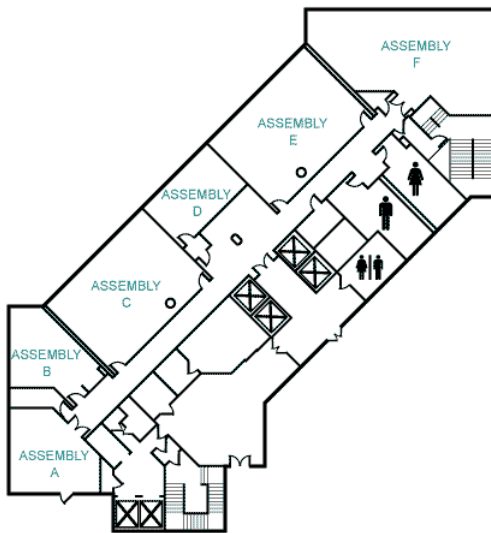
## DOUBLETREE HOTEL PHILADELPHIA - LOBBY LEVEL



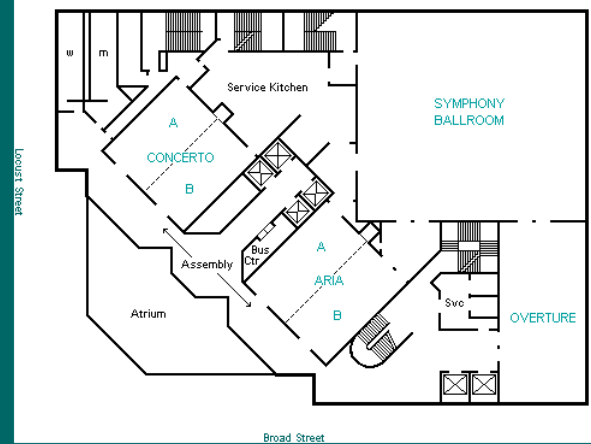
## DOUBLETREE HOTEL PHILADELPHIA - SECOND FLOOR



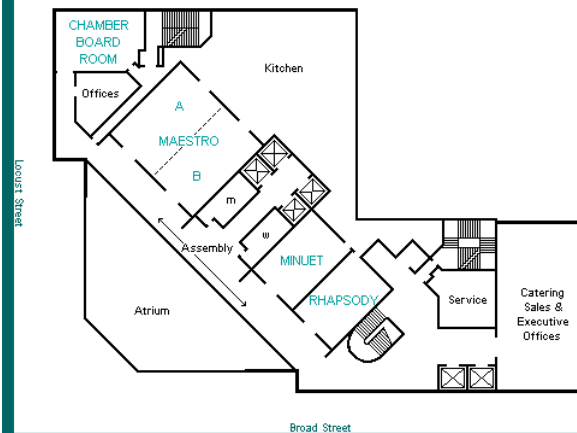
## DOUBLETREE HOTEL PHILADELPHIA - FIFTH FLOOR



## DOUBLETREE HOTEL PHILADELPHIA - THIRD FLOOR



## DOUBLETREE HOTEL PHILADELPHIA - FOURTH FLOOR



# SAVE THE DATES!

**27TH Annual ESPR Meeting**  
**March 20 - 22, 2015**  
**Philadelphia, PA**



*ESPR Program Office*  
3400 Research Forest Drive, Ste. B-7  
The Woodlands, TX 77381  
Email: [espr-info@aps-spr.org](mailto:espr-info@aps-spr.org)  
Phone: 281-419-0052  
Web: [www.aps-spr.org/ESPR](http://www.aps-spr.org/ESPR)

