



**2016**

**ESPR ANNUAL MEETING**

**PROGRAM  
GUIDE**

**Philadelphia, PA - March 11-13**

Jointly provided by Tulane University Health Sciences Center.

# Eastern SPR Officers & Council

## 2014-2017 President

George A. Porter, Jr., MD, PhD  
University of Rochester Medical Center  
Rochester, NY  
Email: george\_porter@urmc.rochester.edu  
Phone: (585) 276-4769

## 2011-2016 Secretary

Michael Posencheg, MD  
Division of Neonatology and Newborn Services  
Hospital of the University of Pennsylvania  
Philadelphia, PA  
Email: michael.posencheg@uphs.upenn.edu  
Phone: (215) 615 - 4376

## 2011-2016 Treasurer

Jason Z. Stoller, MD  
Children's Hospital of Philadelphia  
Philadelphia, PA  
Email: stoller@email.chop.edu  
Phone: (215) 590-4393

## Chairperson, Planning Committee

Joseph Bliss, MD, PhD  
Women & Infants Hospital of Rhode Island  
Providence, RI  
Email: jbliss@wihri.org  
Phone: (401) 274-1100

## Planning Committee

Kirsten Bechtel, MD  
Mark Cicero, MD  
Shetal Shah, MD, FAAP

## Director of Sponsorship

Jeffrey Shenberger, MD  
Baystate Medical Center  
Springfield, MA  
Email: jeffrey.shenberger@baystatehealth.org  
Phone: (413) 794-0093

## Nominations Committee

Heather Brumberg, MD, MPH (Chair)  
Maria Fareri Children's Hospital at Westchester Medical Center  
Valhalla, NY  
Email: heather\_brumberg@nymc.edu  
Phone: (914) 493-8491

## Councilors

2013-2017 ..... Zubair Aghai, MD  
2013-2017 ..... Heather Brumberg, MD, MPH  
2013-2017 ..... Mark Cicero, MD  
2012-2016 ..... Murli Purswani, MBChB, FAAP  
2015-2019 ..... Lawrence Rhein, MD  
2013-2017 ..... Steven Rogers, MD  
2012-2016 ..... Jeffrey S. Shenberger, MD  
2015-2019 ..... Adam Spanier, MD  
2014-2018 ..... Alfin Vicencio, MD

## Past Presidents

2011-2014 ..... Vineet Bhandari, MD, DM  
2008-2011 ..... Lawrence M. Nogee, MD  
2005-2008 ..... Bruce D. Gelb, MD  
2002-2005 ..... Luc P. Brion, MD  
1999-2002 ..... Mitchell J. Kresch, MD  
1996-1999 ..... Ira H. Gewolb, MD  
1993-1996 ..... Alan R. Fleischman, MD  
1991-1993 ..... Marc Yudkoff, MD  
1989-1991 ..... Joseph B. Warshaw, MD  
1988-1989 ..... Laurence Finberg, MD

## CONTENTS

Sponsorship Honor Roll .....	1
Recognition of New Members.....	2
Press Guidelines .....	3
Meeting Services & CME Accreditation.....	4
Schedule-at-a-Glance .....	5
Friday Programming.....	6-8
Saturday Programming.....	9-19
Sunday Programming.....	20-24
Abstract Presenter Index .....	25
Faculty .....	26
Hotel Maps.....	inside back cover

# Sponsorship Honor Roll

The ESPR would like to express appreciation to the following companies for their support:

## Corporate Sponsors

**Abbott Nutrition**  
**Mead Johnson Nutrition**  
**Chiesi**  
**Nutricia**

## Display Tables

**Nutricia**  
**The Children's Hospital of Philadelphia**  
**Pediatrics**  
**ONY, Inc.**

*Support our exhibitors by visiting their booths.*

### Friday

6:00 pm - 7:30 pm

### Saturday

7:00 am - 8:00 am  
9:30 am - 9:45 am  
3:00 pm - 3:15 pm  
6:00 pm - 7:30 pm

### Sunday

7:30 am - 9:00 am  
10:15 am - 10:30 am

## Academic Sponsors

**Baystate Childrens Hospital**  
Charlotte M. Boney, MD

## Cohen Children's Medical Center of New York

Charles L. Schleien, MD, MBA

## Stony Brook Department of Pediatric

Margaret McGovern MD PhD

## Connecticut Children's Medical Center /UConn Health

Juan C. Salazar, MD, MPH

## University of Rochester

Nina Schor

## Women & Infants Hospital Department of Pediatrics

James Padbury, MD



Dear Colleagues,

**Welcome to the 28th Annual Meeting of the Eastern Society for Pediatric Research** (ESPR) and to our host city of Philadelphia, the Cradle of Liberty!

The Eastern Society for Pediatric Research Council and Planning Committee are confident that you will enjoy our exciting program. Highlights include a State-of-the-Art Plenary, Mentor of the Year, a "Great Debate", and the highly popular Fellows' Clinical Case Competition. High-quality original research is presented in sub-specialty platform sessions with leading clinical and scientific authorities moderating the presentations and in four poster sessions.

The goals of the Eastern SPR Annual Meeting are to create a forum where: i) young investigators can present their research in a structured yet relaxed atmosphere, ii) regional clinicians can be exposed to cutting edge clinical and basic science, iii) timely educational programs addressing important topics in Pediatrics are presented and iv) trainees are able to interact with senior investigators and clinicians in an informal setting.

The continued success of our previous meetings has enabled an entirely web-based system for membership, registration and payments, in making timely announcements, in enhanced room booking services, and for the improvement in the overall ease of running the meeting. In addition, we again have centralized informatics enabling presenters to load their slide-show in advance at a speaker-ready station.

**ACKNOWLEDGEMENTS:** The organization of this meeting would not have been possible without the help of the administrative offices of the American Pediatric Society (APS) and the Society for Pediatric Research (SPR). We are especially grateful to: Executive Director Eileen Fenton, CFO-Kate Culliton, Belinda Thomas, Carmen Beck, Lisa Thompson, and Glenda Minshew. We also recognize the energetic efforts of the Eastern SPR Planning Committee and Council Members for their guidance and vision in planning this meeting and the efforts of Tulane CCE as our 2016 provider for the CME program. In addition, we thank various members of the regional pediatric community for reviewing the submitted abstracts and for moderating our platform sessions. Lastly, our corporate and leading academic sponsors were instrumental in making this meeting possible.

Most of all, we want to thank you for attending and for contributing your wisdom and experience in the pursuit of excellence. We hope that you enjoy and profit from the meeting, and look forward to your continued participation in future meetings!

**George Porter, Jr., MD, PhD**  
President

**Michael Posencheg, MD**  
Secretary

**Joseph Bliss, MD, PhD**  
Chair, Planning Committee

# Recognition of New Members



The Council of the Eastern Society for Pediatric Research would like to recognize the following new members who have joined the society within the last year.

Membership in the Society reflects not only peer recognition of research achievements in pediatrics, but continuing commitment to pediatric research and fostering the career development the next generation of pediatric researchers. The Council and Society members welcome active participation in the organization. Like our parent organization, the Eastern SPR seeks to promote the generation of new knowledge, the professional growth of the current and next generation of academic pediatricians, and the translation of research discoveries into treatments that will benefit children worldwide. We believe that membership and active participation in the Eastern Society for Pediatric Research can meaningfully contribute to professional success as an academic pediatrician.

To celebrate this achievement, new members will be recognized at the **Opening Reception on Friday, March 11, 2016**. Once again, congratulations and welcome to the Eastern Society for Pediatric Research.

Jamie Pinto, MD  
Jayasree Nair, MBBS MD  
Sagori Mukhopadhyay, MD, MMSc  
Elizabeth Yen, MD  
Annemarie Stroustrup, MD, MPH  
Beatrice Goilav, MD

## AAP CREDITS

This continuing medical education activity has been reviewed by the American Academy of Pediatrics and is acceptable for a maximum of 12 AAP credits. These credits can be applied toward the AAP CME/CPD Award available to Fellows and Candidate Members of the American Academy of Pediatrics

### **Process for Attendees to Receive AAP Credit:**

AAP Credit for attendees is recorded only when an attendee submits a copy of his/her certificate of attendance (pick up at the registration desk), **with AAP ID number**, to the American Academy of Pediatrics.

The address to mail the certificate is:

**American Academy of Pediatrics,**  
**Attn: Transcript Coordinator**  
141 Northwest Point Blvd., Elk Grove, IL 60007-1098  
Fax: 847-434-8387

# 2016 ESPR Press Guidelines



Thank you for your interest in covering pediatric topics offered at the annual meeting of the Eastern Society for Pediatric Research (ESPR). The annual meeting is a private meeting of the ESPR. The granting of media credentials for the meeting is at the sole discretion of the ESPR program committee.

Please note the following ESPR Press guidelines and media credentialing policies for the meeting.

## Press Badges

Only individuals who are working for and representing a recognized news organization may register as press. To receive a press badge, working journalists must provide identification such as a business card, letter of assignment and published samples of bylined work, preferably stories relating to pediatric health. All freelance journalists must provide a letter of assignment on company letterhead from an editor of a recognized news organization certifying you are covering the ESPR annual meeting for the organization. Press badges are available only to working journalists who can show evidence that their attendance will result in coverage of the ESPR meeting. You may register at the ESPR Registration Desk at the Doubletree Hilton Philadelphia beginning **Friday, March 11 at 4:00 pm.**

Based on space requirements, ESPR retains the right to limit the number of press badges issued to a single media organization. ESPR does not issue press badges to: publishers or a publication's advertising, marketing, public relations or sales representatives; publishers, editors or reporters from manufacturers' house organs or promotional publications; public relations staff of exhibitors or educational institutions; or other individuals or their representatives who are not actually reporting on the meeting. Any Press badge holder who sells, markets or represents a company or organization for the purpose of obtaining advertising or subscriptions from any meeting registrant or exhibitor immediately forfeits press credentials.

A press badge allows media to attend all ESPR sessions being held during the dates of **March 11 – 13, 2016.** It must be worn at all times and obtained before attending and session. A press badge is not to be shared.

Registration fees for working press are waived. ESPR considers working press to be editorial staff of newspapers or magazines, medical or health care publications and broadcast or Web-based media.

## Photography and Video

Television crews, documentary film crews, video crews and photographers covering the meeting are required to check in immediately at the ESPR Registration Desk each day, and must be accompanied at all times by a ESPR Officer or staff member when shooting inside the hotel. Shooting schedules and on-camera interview requests must be provided in writing in advance to ensure staff availability. As a courtesy to presenters, television and video crews, photographers, and radio reporters must obtain permission from the speaker and moderator before recording or filming an interview. Media may not photograph or videotape an exhibit booth or other display without the permission of the exhibitor and ESPR. This includes use of camera phones, personal digital cameras and other handheld devices.

## Scientific Papers

In order to help maintain their eligibility for peer-reviewed journal publication, some researchers may not want to make themselves available for media interviews. Journalists who want to use slides, graphs and other visuals to illustrate coverage must have the presenter's permission.

ESPR appreciates your interest in child health issues. We hope that you have an instructive and enjoyable time at our meeting and encourage you to join us at future meetings. Please let us know if we can help you in any way.



# Meeting Services & CME Accreditation

## Registration and CME Desk Hours

Registration will be held on the 3rd floor. Registration hours are as follows:

Friday, March 11	4:00pm – 7:30pm
Saturday, March 12	6:00am – 7:30pm
Sunday, March 13	6:30am – 12:00pm

## Abstract Publication

All abstracts being presented at the 2016 Eastern SPR Annual Meeting are viewable on the ESPR homepage.

## Audio/Visual Information

All oral presentations must be made using PowerPoint. Computers and LCD projectors will be provided. Presenters that have submitted their presentations in advance, are still required to check in at Speaker Ready.

## Speaker Ready (Chamber Board Room-4th floor)

Presentations will be loaded onto a central computer prior to the session in which the presentation is to be made (i.e., Friday evening for Saturday morning presentations, Saturday morning for Saturday afternoon presentations, and Saturday afternoon for Sunday morning presentations). Please also bring your CD-ROM, ZIP drive or flash memory.

## The speaker ready room hours are as follows:

Friday, March 11	4:00pm – 7:30pm
Saturday, March 12	7:00am – 7:30pm
Sunday, March 13	7:30am – 12:00pm

## Overview

Research and technology are changing rapidly in medicine and it is important for physicians and healthcare professionals to critically evaluate the emerging developments. Physicians and healthcare professionals in pediatrics need to increase their competence in discerning which of the emerging research and technologies are applicable to their patient populations. Discussions and debates on these emerging data stimulate the development of new guidelines, appropriateness criteria and evidence-based changes in medical practice.

The ESPR annual meeting provides a forum for young investigators to share their translational and clinical research with mentors and senior investigators. This gives the junior investigators important feedback in a non-threatening environment, provides for critiques and opportunities to improve the presentation before presenting on a national stage, and fosters mentoring from senior investigators.

The senior investigators benefit from this educational format by engaging in discussions on how to translate the research into practice, debates on how the new information supports or discredits the "old" information, and assists in the design of possible new research options and extensions.

## Statement of Need

The Eastern Society for Pediatric Research Annual Meeting addresses a three-fold need:

- Young investigators need to increase their competence and performance in presenting their research in a structured yet relaxed atmosphere.
- Regional clinicians need to increase their competence in evaluating and designing strategies to incorporate cutting edge clinical and basic science into practice.
- Trainees need to increase their competence and performance in establishing collaborative relationships with mentors to address the barriers which may be interfering with research development.

## Target Audience

This course is designed for physicians, nurses, and allied health professionals in pediatrics, both in training and in practice.

## Goal

The overall goal of this meeting is to improve patient care by increasing learner competence in evaluating the emerging translational and clinical research in pediatrics and determining parameters for expansion and modification of promising research developments.

## Learner Objectives:

At the conclusion of this activity, participants should be better able to:

- Critically evaluate the emerging translational and clinical research.
- Discuss new developments in pathophysiology of human disease with colleagues
- Identify new areas of investigation which will inform research and improve patient care.
- Develop optimal strategies for clinical investigation and transmission of clinical research results.
- Develop relationships with mentors and peers to address the barriers which interfere with research development.

## Predicted Outcomes

Predicted Changes in Practice as a result of participating in this activity may include the ability to:

- Determine whether appropriate changes need to be recommended in patient protocols as indicated in the emerging research data.
- Implement new tools for teaching, research and medical practice.
- Apply appropriate evidence based recommendations in my research, teaching and/or medical practice.
- Present research in a national forum.
- Establish collaborations to expand or address barriers which are identified

## Accreditation:

This activity has been planned and implemented in accordance with the accreditation requirements and policies of the Accreditation Council for Continuing Medical Education (ACCME) through the joint providership of Tulane University Health Sciences Center and the Eastern Society for Pediatric Research. Tulane University Health Sciences Center is accredited by the ACCME to provide continuing medical education for physicians.

## Designation

Tulane University Health Sciences Center designates this live activity for a maximum of 12 AMA PRA Category 1 Credits™. Physicians should claim only the credit commensurate with the extent of their participation in the activity.

Tulane University Health Sciences Center and the Eastern Society of Pediatric Research presents this activity for educational purposes only and does not endorse any product, content of presentation or exhibit. Participants are expected to use their own expertise and judgment while engaged in the practice of medicine. The content of the presentations is provided solely by presenters, who have been selected because of their recognized expertise.

## Tulane Disclosure Policy

It is the policy of the Center for Continuing Education at Tulane University Health Sciences Center to plan and implement all of its educational activities in accordance with the ACCME's Essential Areas and Policies to ensure balance, independence, objectivity and scientific rigor. In accordance with the ACCME's Standards for Commercial Support, everyone who is in a position to control the content of an educational activity certified for AMA PRA Category 1 Credit™ is required to disclose all financial relationships with any commercial interests within the past 12 months that creates a real or apparent conflict of interest. Individuals who do not disclose are disqualified from participating in a CME activity. Individuals with potential for influence or control of CME content include planners and planning committee members, authors, teachers, educational activity directors, educational partners, and others who participate, e.g. facilitators and moderators. This disclosure pertains to relationships with pharmaceutical companies, biomedical device manufacturers or other corporations whose products or services are related to the subject matter of the presentation topic. Any real or apparent conflicts of interest related to the content of the presentations must be resolved prior to the educational activity. Disclosure of off-label, experimental or investigational use of drugs or devices must also be made known to the audience.

Tulane University Health Sciences Center and the Eastern Society for Pediatric Research have made every effort to present the program schedule as accurately as possible from information available at the time of printing. We reserve the right to make changes and adjust the number of credits if necessary.

## How To Obtain Your AMA PRA Category 1 Credits™

Tulane and the Eastern Society for Pediatric Research use a secure electronic format for evaluation and credit verification. The evaluation remains anonymous but the link does allow you to give us your contact information which will be incorporated into the Certificate of Credit.

At the conclusion of the conference on Sunday, you will be sent a link to an electronic evaluation and credit verification form from [cme@Tulane.edu](mailto:cme@Tulane.edu). If you do not receive this in your inbox on Sunday afternoon, check your spam/junk mailbox. You can contact [cme@Tulane.edu](mailto:cme@Tulane.edu) if you did not receive it and Tulane will send you another link for claiming your credits.

You will receive your certificate of credit by Friday, April 22, 2016. If you do not receive it by then, please notify Tulane University at [cme@Tulane.edu](mailto:cme@Tulane.edu).

# Eastern SPR Schedule-at-a-Glance

## FRIDAY, MARCH 11

6:00pm – 7:30pm

**Poster Session I**  
**Opening Reception**  
*Ormandy Ballroom – 1st Floor*

## SATURDAY, MARCH 12

7:00am – 8:00am

**Continental Breakfast**  
*Ormandy Ballroom – 1st Floor*  
**Poster Session II**  
*Ormandy Ballroom – 1st Floor*

8:00am – 9:30am

**Emergency Medicine I**  
*Concerto A/B – 3rd Floor*  
**General Pediatrics I**  
*Maestro A – 4th Floor*  
**Neonatal Neurology I**  
*Overture – 3rd Floor*  
**Human Milk / Breastfeeding**  
*Aria A/B – 3rd Floor*  
**Infectious Disease I**  
*Minuet – 4th Floor*  
**Pulmonology**  
*Maestro B – 4th Floor*  
**Adolescent Medicine**  
*Rhapsody – 4th Floor*

9:30am – 9:45am

**Coffee Break**  
*Ormandy Ballroom Foyer – 1st Floor*

9:45am – 11:15am

**Critical Care**  
*Maestro A – 4th Floor*  
**Neonatology – Quality Improvement**  
*Maestro B – 4th Floor*  
**Neonatology – Pulmonary/Ventilation**  
*Overture – 3rd Floor*  
**Neonatology – Necrotizing Enterocolitis**  
*Aria A/B – 3rd Floor*  
**Emergency Medicine II**  
*Concerto A/B – 3rd Floor*  
**Education/Epidemiology**  
*Rhapsody – 4th Floor*  
**Allergy/Immunology & Nephrology**  
*Minuet – 4th Floor*

## SATURDAY, MARCH 12

11:30am – 12:30pm

**Plenary Session I**  
**PLENARY LECTURE**  
**Renee Reijo Pera, MD**  
*Timing in Human Embryo Development: Species specific sequences and disease*  
*Symphony Ballroom – 3rd Floor*

12:40pm – 1:40pm

**Fellows' Clinical Case Presentation Competition**  
*Symphony Ballroom – 3rd Floor*  
**Eastern SPR Business Meeting**  
*Rhapsody – 4th Floor*

1:45pm – 4:15pm

**Plenary Session II**  
**MENTOR OF THE YEAR**  
**Satyan Lakshminrusimha, MD**  
*A Picture Is Worth A Thousand Words*  
*Symphony Ballroom – 3rd Floor*  
**YOUNG INVESTIGATOR AWARD - TRAINEE (2:30pm-3:15pm)**  
*Symphony Ballroom – 3rd Floor*  
**Coffee Break (3:15pm-3:30pm)**  
*Ormandy Ballroom Foyer – 1st Floor*  
**YOUNG INVESTIGATOR AWARD - FACULTY (3:30pm-4:15pm)**  
*Symphony Ballroom – 3rd Floor*

4:30pm – 6:00pm

**Developmental Biology**  
*Minuet – 4th Floor*  
**Neonatology – Potpourri**  
*Overture – 3rd Floor*  
**Obesity**  
*Rhapsody – 4th Floor*  
**Neonatology – Infectious Disease**  
*Aria A/B – 3rd Floor*  
**General Pediatrics II**  
*Concerto A/B – 3rd Floor*  
**Neurology**  
*Maestro A – 4th Floor*  
**Gastroenterology/Bilirubin**  
*Maestro B – 4th Floor*

6:00pm – 7:30pm

**Poster Session III & Reception**  
*Ormandy Ballroom – 1st Floor*

## SUNDAY, MARCH 13

7:30am – 9:00am

**Continental Breakfast**  
*Ormandy Ballroom – 1st Floor*  
**Poster Session IV**  
*Ormandy Ballroom – 1st Floor*

9:00am – 10:15am

**Plenary Session III**  
*Symphony Ballroom – 3rd Floor*  
**PRESENTATION OF THE YOUNG INVESTIGATOR AWARDS (9:00am – 9:15am)**  
*Symphony Ballroom – 3rd Floor*

**THE GREAT DEBATE (9:15am – 10:15am)**  
**Dr. Margaret Moon and Dr. Steven Goldstein**  
*Is It Ethical For Pediatricians To Refuse To Create Initial Patient Relationships With Children Whose Parents Refuse Vaccinations*  
*Symphony Ballroom – 3rd Floor*

10:15am – 10:30am

**Coffee Break**  
*Ormandy Ballroom Foyer – 1st Floor*

10:30am – 12:30pm

**Developmental/Behavioral Pediatrics**  
*Rhapsody – 4th Floor*  
**Hematology/Oncology/Immunology**  
*Minuet – 4th Floor*  
**Cardiology**  
*Maestro A – 4th Floor*  
**Emergency Medicine III**  
*Concerto A/B – 3rd Floor*  
**Endocrinology**  
*Maestro B – 4th Floor*  
**Neonatal Neurology II**  
*Aria A/B – 3rd Floor*  
**Pulmonary Therapeutics**  
*Overture – 3rd Floor*



All 2016 ESPR Abstracts are available on the ESPR website.

**Friday, March 11**  
**Poster Session I:**  
**Adolescent Medicine/Allergy/**  
**Epidemiology/General Pediatrics/**  
**Hematology-Oncology/Infectious**  
**Disease/Neonatology**  
 6:00pm-7:30pm——Ormandy

**1** Does Proximity Drive Visits? Using Real-Time GPS Data to Understand Youth Access and Patronage of Food Establishments  
*Nina Schrager, Tracy K. Richmond.* Abstract 1

**2** Acceptance of Routine HIV Testing By Hospitalized Adolescents and Young Adults  
*Avni M. Bhalakia, Elissa Gross, Dana Watnick, Lindsay DuBois, Risa Bochner, Guerin Gagliastri, Kim Sorace, Donna Futterman, Jaeun Choi, Hina J. Talib.* Abstract 2

**3** The Impact of Health Related Quality of Life on Longitudinal Weight Gain in Youth: Does Weight Perception Play a Role?  
*Katelyn Enzer, Kendrin Sonnevile, Carly Milliren, Idia Thurston, Tracy K. Richmond.* Abstract 3

**4** Knowledge of Sport-Related Concussion Among Urban Adolescents  
*Dev Master, Ashley Hiza, Lily Q. Lew, Susana Rapaport.* Abstract 4

**5** Innovation in Adolescent Preventative Healthcare: Piloting 'Teen Checkup Days'  
*Batul Kaj, Jinsy Jacob, Susan Leib, Cynthia DeLago, Matilde Irigoyen.* Abstract 5

**6** Alcohol Screening Practices among School Nurses in Massachusetts  
*Dylan J. Kaye, Julie Lunstead, Elissa R. Weitzman, Sharon Levy.* Abstract 6

**7** Mindfulness-Based Stress Reduction (MBSR) for Adolescents with Medically-Unexplained Symptoms  
*Ather Ali, Theresa R. Weiss, Anne Dutton, Wendy K. Silverman, Eugene D. Shapiro.* Abstract 7

**8** Improving Pediatric Clinical Research Through Collaboration With Young Persons' Advisory Groups  
*Nicholas M. Frederico, Vivian W.L. Tsang, Hadleigh G. Thompson, Siddhant Srivastava, Julia N. Stimpfl, Chaz Thompson, Charles A. Thompson, Sharon R. Smith.* Abstract 8

**9** Patch Testing in Pediatric Patients with Atopic Disease  
*Irum Noor, Melanie Chong, Marcella Aquino, Luz Fonacier.* Abstract 9

**10** Pediatric Resident Awareness of Anaphylaxis and Epinephrine Auto-Injector Demonstrations  
*Rebecca Berger, Rebecca Koransky, Manish Ramesh.* Abstract 10

**11** Mood Disorder Prevalence in a Multi-Ethnic Urban Pediatric Lupus Cohort  
*Tamar Rubinstein, Dawn Wahezi, Jay Mehta, Norman Ilowite, Nicole Jordan, Ruth E.K. Stein, Chaim Putterman.* Abstract 11

**12** Transitioning Lupus Patients from Pediatric to Adult Rheumatology  
*Joyce Hui-Yuen, Liza Bermudez, Ashlea Cook, Lisa Imundo, Andrew Eichenfield, Amy Starr, Anca Askanase.* Abstract 12

**13** IL-21 Levels Do Not Distinguish Children Presenting With Kawasaki Disease from Other Febrile Children  
*Rachel Engelberg, Meghan Martin, Hakimuddin Sojar, Mark D. Hicar.* Abstract 13

**14** Peanut-Containing Products in Children's Hospitals: Putting Pediatric Patients at Risk  
*Laura Fletcher, Tammy Pham, Maguire Herriman, Bridget Kiely, Ruth Milanaik.* Abstract 14

**15** Joint Effects of Ambient PM2.5 Exposure and Maternal Pre-Pregnancy Obesity on Childhood Overweight or Obesity in the Boston Birth Cohort  
*Rebecca M. Nachman, Guangyun Mao, Xingyou Zhang, Zhu Chen, Xiumei Hong, Guoying Wang, Deanna Caruso, Colleen Pearson, Shyam Biswal, Kirsten Koehler, Barry Zuckerman, Marsha Wills-Karp, Xiaobin Wang.* Abstract 15

**16** Accuracy of Parental Reported Weights and Heights at 12 Months of Age as Estimates of Weight-for-Length Percentiles  
*Sahel Hazrati, Suchitra Hourigan, Kathi Huddleston, John Niederhuber.* Abstract 16

**17** Pediatric Readmissions at an Inner City Safety-Net Hospital  
*Khyzer Aziz, Noe D. Romo, Kenneth Rivlin, Jeffrey C. Gershel.* Abstract 17

**18** Predictors of Asthma Medication Adherence and Its Relationship to Asthma Control  
*Aparna C. Yadatore, Alyson W. Smith, Uri Belkind, Paulo R. Pina, David H. Rubin.* Abstract 18

**19** Caring for the NICU Graduate: A Primary Care Needs Assessment  
*Elizabeth Enlow, Annie Giaccone, Lori Christ, Scott A. Lorch.* Abstract 19

**20** The Role of Medical Complexity in Health Related Quality of Life (HRQOL) for Children and Youth with Special Healthcare Needs (CYSHN)  
*Matthew B. McDonald, Christina Ott, Juliana Romano, Stacy McDonald, Alexander Kregel, Christopher Haines.* Abstract 20

**21** The Safety of High Flow Nasal Cannula in the General Inpatient Setting for Infants With Bronchiolitis  
*Nina M. Dadlez, Nora E. Esteban-Cruciani, Asama Khan, Yi Shi, Kevin J. McKenna, Gabriella Azzarone, Larissa Gabelman, William N. Southern.* Abstract 21

**22** The Value of Blood Culture Utilization and Factors Associated With Diagnosis of Bacteremia in Pediatric Population  
*Srividya Naganathan, Sandy Aikara, Harman Chawla, Aswine Bal, Anna Petrova.* Abstract 22

**23** Rapid Respiratory Panel Testing With and Without Mycoplasma Assessment and Its Effect on Azithromycin Usage in Patients Admitted with Status Asthmaticus  
*Rachel Zhang, Yiting Tan, MeiQian Ma, Nancy Palumbo, Stephen Barone.* Abstract 23

**24** Breastfeeding and Later ADHD: Are There Dose Effects or a Continuum of Benefit in Babies Who Are Also Formula Fed  
*Derek Soled, Lisa Rosen, Andrew Adesman.* Abstract 24

**25** Time for Your Check Up: The Impact of Vaccine Refusal on the Frequency of Physician Office Visits  
*Milissa U. Jones, Kenneth L. Cameron, Cassandra G. Carter.* Abstract 25

**26** Promoting Healthy Active Living for the Children of Teen Parents  
*Kymberly M. Gonzalez, Christina Bourland, Mary F. Jarcy, Nancy R. Kelly.* Abstract 26

**27** Who's to Blame? Physician Misperceptions of Childhood Obesity as a Barrier to Weight Management  
*Ceena Philipose, Mary Mehlman.* Abstract 27

**28** Current Enteral Energy Intake Recommendation Significantly Overestimates Actual Daily Enteral Needs of Growing Preterm Infants Admitted to an Acute Pediatric Rehabilitation Facility  
*Ros Dalope, Lori Ahdieh.* Abstract 28

**29** Health Information Preferences in Pediatric Primary Care  
*Amy Hersh, Iman Sharif.* Abstract 29

**30** Eduwait: Talk, Sing, Read, Play, Screen!  
*Sehera A. Himani, Dina J. Lieser, Melissa Passarelli, David Fagan.* Abstract 30



**31 Reducing Readmissions by Improving Communication at Transitions of Care**  
Ulka T. Kothari, Alena Connelly, Cristina Mendes.  
Abstract 31

**32 Reducing Asthma Re-Admissions: Inpatient Community Health Worker Support**  
Iman Sharif, Denise Fuller, Erin Carroll, Alisa Haushalter.  
Abstract 32

**33 Improving Home Medication Collection in the Pediatric In-Patient Unit through House Staff Engagement: An Initial Step in Prevention of Adverse Drug Events**  
Marc G. Sycip, Gary Mak, Renee Barlev, Arsenia Asuncion, Lyn Quintos-Alagheband.  
Abstract 33

**34 Grow2gether: A Randomized Trial of a Social Media Peer Group Intervention for Mothers to Prevent Obesity from Infancy**  
A.G. Fiks, R.S. Gruver, C.T. Bishop, J. Shults, S. Virudachalam, A. Lieberman, M. Gerdes, A.W. Suh, G.K. Kalra, P.A. DeRusso, T.J. Power, R.I. Berkowitz.  
Abstract 34

**35 Improving Adherence By Families to Pediatric Clinical Care Recommendations Using a Community Health Worker (CHW) Intervention with the Pediatric Medical Home**  
Sarah P. Justvig, Justine Li, Giuseppina Caravella, Minqin Chen, Lisa A. Benz Scott, Susmita Pati.  
Abstract 35

**36 Patient Perspectives on the Transition from Pediatric to Adult Primary Care**  
Grace Fisler, Maxine Ames, Mariecel Pílipil.  
Abstract 36

**37 Variation in Neonate Swaddling Techniques in Hospitals**  
Laura Fletcher, Tammy B. Pham, Sari Bar, Diana Li, Helen Papaioannou, Regina Spinazzola, Ruth L. Milanaik.  
Abstract 37

**38 Psychosocial Risk Factors Influencing Level of Asthma Control in Children with Persistent Asthma**  
Ana S. Hernandez, Alyson W. Smith, Paulo Pina, David H. Rubin.  
Abstract 38

**39 Implementation of a Standardized Screening Instrument for Suspected Speech Delay vs the Use of Developmental Surveillance Checklist**  
Misha Sodhi, Priyam Pattnaik, Fernanda Kupferman, Aysha Baig, Vikash Agrawal, Carolyn Springer, Romina Barros.  
Abstract 39

**40 Use of Language Services for Telephone Advice By Limited English Proficiency Families in a Pediatric Primary Care Setting**  
Delma-Jean Watts, Nizar Dowla, Priya Hirway, Maurice Hajjar, Shuba Kamath.  
Abstract 40

**41 Impact of Adherence to Community Integrated Management of Childhood Illnesses (C-IMCI) Community and Family Practices on Child Morbidity in La Romana, Dominican Republic**  
Omolara T. Uwemedimo, Abdul Qadri, Berlinda Olivier, Afrin Howlader, Giselina Pierret.  
Abstract 41

**42 Chew on This: Not All Products Labeled First Finger Foods Are Created Equal**  
Nicol R. Awadalla, Tammy B. Pham, Ruth L. Milanaik.  
Abstract 42

**43 Use of an Organic Food Provider Improves Purchase of Produce Boxes at Urban Tertiary Care Hospital**  
William J. Woodall, Katie Tran, Natasha Bagwe, Bruce A. Bernstein, Hans B. Kersten.  
Abstract 43

**44 2014 Bronchiolitis Clinical Practice Guidelines: Do You Agree?**  
Archana Balamohan, Vibha C. Murthy, Tiong G. The.  
Abstract 44

**45 Providers' Practices and Perceptions about Primary Care Delivery for Newly Arrived Foreign-Born Patients at an Academic Primary Care Center**  
Elyse Portillo, Bianca Quinones-Perez, Alexandra Epee-Bounya, Kim Wilson.  
Abstract 45

**46 Effects of Preconception Care Counseling in Pediatrics on Maternal Substance Use Behavior: Results of a Randomized Trial**  
Nymisha Chilukuri, Krishna Upadhya, Kamila Mistry, Kevin Psoter, Tina L. Cheng.  
Abstract 46

**47 A Child Contextual Index to Study Childhood Obesity**  
Delfin Iglesia, Evan Sommer, Nina Martin, William Heerman, Shari Barkin.  
Abstract 47

**48 Assessing the Impact of Nursery Hospitalist Program**  
Dorothy Chu, Meredith Krevitsky, Vanessa Baptiste, Nancy Palumbo.  
Abstract 48

**49 Rooming-In: Do Our Patients Want It?**  
Gregory Kenny, Mera Goodman, Jennifer Kosoy, Maria D'Iorio.  
Abstract 49

**50 Early Complications Associated with Elective Circumcision in Healthy Newborns in Two Urban Community Teaching Hospitals**  
Andrea Heras, Victoria Vallejo, Marcela Pineda, Sibat Khwaja, Lourdes Cohen, Allan Jacobs.  
Abstract 50

**51 Rapid Adjustment of Decision Support in Response to Updated Recommendations for Palivizumab Eligibility**  
Jeremy Michel, Levon Utidjian, Dean Karavite, Annique Hogan, Robert Grundmeier.  
Abstract 51

**52 Lack of Parental Adherence to AAP Safety Guidelines: Poor Recollection of Anticipatory Guidance By Physicians**  
Tasnim Ahmed, Tammy Pham, Chelsey Clark, Chuck Ng, Ruth Milanaik.  
Abstract 52

**53 What Parents and Professionals Want in an Early Childhood Development App**  
Amber Mendres-Smith, Brenda Hussey-Gardner.  
Abstract 53

**54 Relationship between Obstructive Sleep Apnea and Sleep Bruxism in Children**  
Conalu Liwag, Erichsen Daniel, Paulo Pina, David Rubin.  
Abstract 54

**55 Effect of Treatment of Sickle Cell Disease on PICA**  
Madhavi Lakkaraja, Dyadin Esharif, Lakshmi P. Nulu, Padmavati Eksambe, Mario Peichev, Kusum Viswanathan.  
Abstract 55

**56 Ex-Vivo Expansion of Previously Cryopreserved, Thawed and Re-Cryopreserved Cord Blood Mononuclear Cells Utilizing K562-mbL21-41BBL; Potential for Adoptive Cellular Immunotherapy Post Umbilical Cord Blood Transplantation**  
Allyson Flower, Yaya Chu, Joanne Kurtzberg, Dean Lee, Mitchell S. Cairo.  
Abstract 56

**57 Characterization of Mycoplasma pneumoniae Associated Complicated Pneumonia in a Pediatric Population**  
Aaron G.S. St-Laurent, Joseph Ting, Tatiana Sotindjo, Ashley D. Roberts.  
Abstract 57

**58 Management of Tinea Capitis in Children Less Than 2 Years of Age in the Greater Philadelphia Area**  
Magdalena Kazmierczak, Hilda Kabali, Susan Leib.  
Abstract 58

**59 High Proportion of Kingella Septic Arthritis in Ultra-Orthodox Children < 4 Years of Age**  
Joselito Sanchez, Henry Pollack.  
Abstract 59

**60 Methodology and Provider Attitudes to Context-Based Development of an ART Adherence Measurement Tool for HIV+ Adolescents and Adults in La Romana, Dominican Republic**  
Stella M. Savarimuthu, Wendy Galvez, Mina Halpern, Leonel Lerebours-Nadal, Omolara T. Uwemedimo.  
Abstract 60

**61 Infection Prevention Strategies Impact on Reduction of MRSA and Nosocomial Infection in the NICU**  
Tazuddin A. Mohammed, Michele Fleming, Jose Munoz, Russell Moores, Sharon Cone, Jie Xu, Karen Hendricks-Munoz.  
Abstract 61

**62 High Sensitivity C-Reactive Protein (hsCRP) Levels in Long-Term Survivors of Perinatal HIV Infection**  
*Karishma K. Kancherla, Sheila K. Kalyanam, Ninad Desai.* \_\_\_\_\_ Abstract 62

**63 Relationship Between Clinical Outcome, Disease Severity and Quality of Antibiotic Management in Pediatric Patients With Bacteremia**  
*Daniel Segal, Ghussai Abd El Gadir, Stephan Kohlhoff.* \_\_\_\_\_ Abstract 63

**64 Neonatal Vaccine-Strain Varicella-Zoster Infection 27 Days after Maternal Post-Partum Vaccination**  
*Lybil B. Mendoza Alvarez, Brinda Doraiswamy, Aniruddh Setya, David Fagan, Vineet Lamba.* \_\_\_\_\_ Abstract 64

**65 Improving Antibiotic Stewardship in the Outpatient Setting at the Einstein Pediatric Ambulatory and Adolescent Center**  
*Andrea T. Zivot, Mayssa Abuali, Samia Aleem, Francisco Gonzalez-Salazar, Leonard Braitman.* \_\_\_\_\_ Abstract 65

**66 24/7 In-House Neonatology Attending Coverage: Is It All About Better Patient Care?**  
*Vikramaditya Dumpa, Indira Avulakunta, Praveen Chandrasekharan, Sandra Carlo, Satyan Lakshminrusimha.* \_\_\_\_\_ Abstract 66

**67 Outcome Differences in Neonatal Abstinence Syndrome Managed in the NICU Versus Pediatric Floor**  
*Amy L. Lembeck, Deborah J. Tuttle, Robert Locke, Pamela Jimenez, Amy B. Mackley, David A. Paul.* \_\_\_\_\_ Abstract 67

**68 Trends in Morbidity and Mortality of Small-For-Gestational-Age (SGA) Infants By Gestational Age**  
*Laura H. Rubinos, Molly Passarella, Scott A. Lorch.* \_\_\_\_\_ Abstract 68

**69 Are We Dealing With Too Many Abnormal Newborn Screenings in the NICU: Further Changes May Be Necessary in State's Newborn Screening Program Cut-Off Values for Premature and/or Sick Babies**  
*Anna Zylak, Samsa Gogcu, Edmund F. LaGamma, Necla Kudrick.* \_\_\_\_\_ Abstract 69

**70 Life Around NICU Discharge from the Perspective of Low Socioeconomic Status Mothers of Premature Infants**  
*Elizabeth Enlow, Laura J. Faherty, Sara Wallace-Keeshen, Ashley E. Martin, Judy A. Shea, Scott A. Lorch.* \_\_\_\_\_ Abstract 70

**71 Mindfulness Based Training Among Parents with Preterm Neonates in the Neonatal Intensive Care Unit (NICU)**  
*Alyssa Marshall, Ursula Guillen, Robert Locke, Amy Mackley, Wendy Sturtz.* \_\_\_\_\_ Abstract 71

**72 Fetal Toxic Metal Exposure from Intrauterine Blood Transfusion**  
*Alison J. Falck, Faeq Al-Mudares, Cynthia F. Bearer, Stephen A. Contag, Garrett Fitzgerald, Prince A.K. Kassim, Sripriya Sundararajan.* \_\_\_\_\_ Abstract 72

**73 Blood Urea Nitrogen as a Marker of Protein Metabolism in Premature Infants**  
*Blair Germain, Ruth Syder, John Ladino.* \_\_\_\_\_ Abstract 73

**74 The Use of Body Fat Measurements to Assess Post Natal Growth in NAS Infants**  
*Michael Pollaro, Melissa Rader, Ruth Snyder, Aimee Herdt, Amy Presti.* \_\_\_\_\_ Abstract 74

**75 Impact of a Standardized Nutrition Protocol in Lean Mass Growth in VLBW Infants**  
*Ruth Snyder, Kathryn Crowley, Catherine Sawtell, Marta Rogido.* \_\_\_\_\_ Abstract 75

**76 Growth Trends After Steroid Exposure in the NICU**  
*Sonia Shastry, Kristin McKenna, Dala Taha, Ursula Nawab.* \_\_\_\_\_ Abstract 76

**77 Rapid High Resolution MR Assessment of Intra-Abdominal Fat in Preterm Neonates**  
*Amanda C. Garfinkel, Jessica Mancuso, Jonathan P. Dyke, Arzu Kovanlikaya, Alan M. Groves.* \_\_\_\_\_ Abstract 77

**78 High Resolution Neonatal Whole Body Composition Quantitation Using 3T MRI**  
*Jonathan P. Dyke, Alan M. Groves, Amanda C. Garfinkel, Jessica Mancuso, Arzu Kovanlikaya.* \_\_\_\_\_ Abstract 78

**79 Does the Implementation of a Standardized Nutritional Protocol Improves Outcomes?**  
*Bettina George, Ruth Snyder, Marta Rogido.* \_\_\_\_\_ Abstract 79

**80 Retrospective Analysis of Long Term Outcomes in Phase 1B Trial of rhCC10 in Premature Infants**  
*Aprile L. Pilon, Richard Parad, Jonathan M. Davis.* \_\_\_\_\_ Abstract 80

**81 Utility of Sepsis Risk Calculator in the Clinical Management of Infants of Mothers with Chorioamnionitis**  
*Saba Faranaz-Kabir, Shaina Lodhi, Rosemary Nunez-Davis, Samia Aleem, Marie Katrina Tan, Agnes Salvador.* \_\_\_\_\_ Abstract 81

**82 Parents' View of Research and Care in the NICU**  
*Katherine Guttman, Steven Joffe, Elliott M. Weiss.* \_\_\_\_\_ Abstract 82

**83 Heart Rate Variability Interactions between Mother-Infant Dyads During Kangaroo Care**  
*Sarah E. Pearce, Donald Pfaff, Lisa Eiland, Robert Green, Ian Holzman.* \_\_\_\_\_ Abstract 83

**84 Relationship Between NIRS Brain and Somatic StO2 vs Vital Sign Parameters of NICU Patients**  
*Beri Massa-Buck, Virginia Amendola, Khodayar Rais-Bahrani.* \_\_\_\_\_ Abstract 84

**Saturday, March 12  
 Poster Session II:**

**Nephrology/Palliative Care/  
 Pharmacology/Pulmonology/  
 Neonatology  
 7:00am-8:00am—Ormandy**

**1 Long Term Outcomes of Nephrotic Syndrome, from Childhood into Adulthood**  
*Rebecca Hjorten, Frederick Kaskel, Kimberly Reidy.* \_\_\_\_\_ Abstract 85

**2 Urinary Neutrophil Gelatinase Associated Lipocalin and Acute Kidney Injury in Very Preterm Infants**  
*Rani K. Thekumparampil, Caroline Straatmann, Frederick Kaskel, Kimberly Reidy, Mamta Fuloria.* \_\_\_\_\_ Abstract 86

**3 Importance of Kidney Length in Children Evaluated for Hypertension**  
*Natalie L. Rosenwasser, Katarina Supe-Markovina, Robert P. Woroniecki.* \_\_\_\_\_ Abstract 87

**4 Pilot Study Measuring Hepcidin and Arterial Stiffness in Children With SLE and Lupus Nephritis**  
*Sarah Joo, Sangeeta Sule, Meredith Atkinson.* \_\_\_\_\_ Abstract 88

**5 Examination of Serum MicroRNAs as Biomarkers for Obesity and Hypertension in Children**  
*Scott Saint-Amour, Santosh K. Patnaik, Eric Kannisto, Sudha Garimella.* \_\_\_\_\_ Abstract 89

**6 Medical Counseling Is Not Associated with Improved Lifestyle Behaviors among Hypertensive Children**  
*Katerina R. Kaczmarzski, Bobbie Henry, Edgar R. Miller, Tammy M. Brady.* \_\_\_\_\_ Abstract 90

**7 Education in Pediatric Palliative Care: Attitudes, Comfort, and Interest at One Children's Hospital**  
*Hatai Kraushaar, Katelyn Donohue, Getachew Teshome, Linda Lewin.* \_\_\_\_\_ Abstract 91

**8 Death During Simulation: Is Auto-Feedback Accurate Compared to Providers' or Parents' Evaluations?**  
*Thomas Pennafort, Marie-Helene Lizotte, Keith Barrington, Ahmed Moussa, Christian Lachance, Maia Sureau, Serge Sultan, Annie Janvier.* \_\_\_\_\_ Abstract 92

**9** **Pattern of Caspase-3 Enzyme Activation After Hypoxia in the Piglet Brain**  
Tracey Harris, Shadi Malaeb,  
Aarthi Gunasekaran, John Grothusen, Amit Jain,  
Maria Delivoria-Papadopoulos. — Abstract 93

**10** **Phases of Apoptosis After Hypoxia in the Newborn Piglet Brain**  
Kashish Mehra, Shadi Malaeb, Sam Ajayi,  
Panagiotis Kratimenos, Jessica Button,  
Maria Delivoria-Papadopoulos. — Abstract 94

**11** **Parental Perceptions of Medical Marijuana in an Urban Childrens Medical Center**  
Michael W. Powell, Pavan K. Anant, Morgan E. Smith, Christine H. Mulvey, Sharon R. Smith. — Abstract 95

**12** **Ethanol Pharmacokinetics in Neonates Secondary to Medication Administration**  
Elizabeth Marek, Susan Adeniyi-Jones,  
Lindsey Roke, Tara DeCerbo, Rebecca Cordell,  
Paul Monks, Walter Kraft. — Abstract 96

**13** **Tissue Oxygen Saturation by Non-Invasive Resonance Raman Spectroscopy in Healthy Neonates**  
Tazuddin Azmi Mohammed, Russell Moores,  
Padriac Romfh, Henry J. Rozycki. — Abstract 97

**14** **Risk Factors Predicting the Need for Admission to Pediatric Intensive Care in Childhood Asthma**  
Prabhavathi Gummalla, Divya Paneerselvam,  
Amal Ezzaiyani, Yash Shah, Franscene Oulds,  
Fernanda Kupferman. — Abstract 98

**15** **Controller Therapy in Children with Asthma Presenting to the Pediatric Emergency Department**  
Munish Kumar, Tian Liang, Darshan Patel,  
Allen J. Dozor, Sankaran Krishnan. — Abstract 99

**16** **WITHDRAWN**

**17** **Glucose Dysregulation and Bacterial Infection in Neonates**  
Vidya V. Pai, Vijay Srinivasan, Adriana Perez,  
Robert W. Grundmeier, Mary C. Harris. — Abstract 101

**18** **Enhanced TNF-Alpha Expression in Preterm Infant Lymphocytes**  
Shanley Sifain, Ravi Misra, Heidy Huyck,  
Laurie Steiner, Tom Mariani, Kristin Scheible,  
Gloria Pryhuber. — Abstract 102

**19** **Duration of Antibiotics in Infants ( 35 Weeks) Exposed to Chorioamnionitis: Have Revisions to Treatment Guidelines Changed Length of Therapy?**  
Mansi S. Vasconcellos, Courtney Kiser,  
Zubair H. Aghai. — Abstract 103

**20** **Gene Expression Profiling in Diagnosis of Neonatal Sepsis**  
L. Srinivasan, D.J. Watson, Z. Zhang,  
E. Rappaport, M.C. Harris. — Abstract 104

**21** **Trends in Chlorhexidine Use in the Neonatal Intensive Care Unit: Results from a Follow-Up National Survey**  
Julia Johnson, Pranita D. Tamma,  
Rebecca Bracken, Susan W. Aucott, Cynthia F. Bearer, Aaron M. Milstone. — Abstract 105

**22** **Diagnostic Dilemma: The Asymptomatic Neonate With Maternal Chorioamnionitis**  
Sadaf H. Kazmi, Sean M. Bailey, Heather B. Howell, Minh-Thu T. Tran, Megan Reyes-Wangh,  
Pradeep V. Mally. — Abstract 106

**23** **Antibiotic Use in the NICU: Do Comorbidities Matter?**  
M. Schmatz, L. Srinivasan, R. Grundmeier,  
M. Tremoglie, A. Perez, M. Chilutti, S. Ostapenko,  
M.C. Harris. — Abstract 107

**24** **Diagnostic Test Accuracy of Serum Procalcitonin for Bacterial Sepsis in Infants: A Systematic Review and Meta-Analysis**  
Miriam T. Stewart, Elliott M. Weiss, Kevin Dysart,  
Roger F. Soll, Gautham Suresh, Haresh Kirpalani. — Abstract 108

**25** **Outcomes of Neonates with Herpes Simplex Virus (HSV) Sepsis Supported with Extracorporeal Membrane Oxygenation (ECMO)**  
Sandeep K. Sadashiv, Deepthi Alapati, Daniel R. Dimberger, Mark T. Ogino. — Abstract 109

**26** **The Natural History of Children With Agammaglobulinemia and Hypogammaglobulinemia: Baseline Features of Patients Enrolled in the United States Immunodeficiency Network (USIDNET) Registry**  
Albert O. Antonio, Marla L. Goldsmith,  
Cristina P. Sison, Artemio M. Jongco. — Abstract 110

**27** **Risk Factors Associated With CLABSI in Critically Ill Neonates**  
Katherine Guttman, Kelley Kovatis,  
Kristin McKenna, Kevin Dysart, Ursula Nawab. — Abstract 111

**28** **C-Reactive Protein Level and White Blood Cell Indices: Useful Predictors of Meningitis in Culture Negative Early Onset Neonatal Sepsis?**  
Shaina Lodhi, Anastasia Mikhno, Sonia Mehra,  
Fredrick Dapaah-Siakwan, Gail Cameron. — Abstract 112

**29** **Achieving Zero Central Line Associated Blood Stream Infection Rate Through a Series of Quality Initiatives-A 7 Year Experience**  
Ali M. Nadroo, Madhu B. Gudavalli,  
Pamod Narula. — Abstract 113

**30** **Evidence for the Involvement of Fibroblast Growth Factor 10 in Response to Hyperoxia in an Experimental Model of Bronchopulmonary Dysplasia**  
Cho-Ming Chao, Caterina Tiozzo, Amit Shrestha,  
Alena Moiseenko Moiseenko, Elie El Agha,  
Vahid Kheirollahi, Rosanna Abellar,  
Parviz Minoo, Saverio Bellusci. — Abstract 114

**31** **Genetic variation of SMAD super family 1 (SMAD1) is associated with development of BPD in ELBW infants through modulations of the highly conserved Wntless Int (Wnt) pathway**  
Leewen J. Hsu, Anna Zylak, Asma Amin,  
Alex Feldman, Umesh Paudel, Lance A. Parton. — Abstract 115

**32** **Effect of Meconium on Human Amniotic Fluid Stem Cell Differentiation into Distal Lung Type Cells**  
Jessica E. Shui, Todd Jensen, Christine Finck. — Abstract 116

**33** **Effects of Exogenous Antioxidants on Biomarkers of Inflammation in the Neonatal Rat Lungs**  
Johanna M. Calo, Charles L. Cai, Michelle Quan,  
Taimur Ahmad, Jacob Aranda, Kay D. Beharry. — Abstract 117

**34** **Genetic Variations of TGF - Are Associated with Bronchopulmonary Dysplasia in Extremely Low Birth Weight Infants**  
Morgan C. Salton, Asma Amin, Umesh Paudel,  
Lance A. Parton. — Abstract 118

**35** **Effect of Growth Velocity After Neonatal Intensive Care Unit Discharge on Respiratory Outcomes of Former Preterm Infants**  
Christina M. Freiburger, Taylor A. Compton,  
Jaclyn I. Davis, Lawrence M. Rhein. — Abstract 119

**36** **Correlation of Proteinuria, Hypertension and Respiratory Status in Preterm Children**  
Kayley M. Gaukler, Elizabeth M. Moran,  
Hannah B. Suchy, Leah M. Frain,  
Lawrence M. Rhein. — Abstract 120

**37** **Exploring Near Infrared Spectroscopy Scores in Neonates by Birth Weight, Gestational Age, Day of Life, and Mean Blood Pressure**  
Stephanie M. Prescott. — Abstract 121

**38** **Comparing Outcomes Based on Prenatal vs. Postnatal Diagnosis of Congenital Diaphragmatic Hernia**  
Allison Davidson, Yunfei Wang,  
Khodayar Rais-Bahrami. — Abstract 122

**39** **Ambient Noise Production By High-Frequency Neonatal Ventilators**  
Justin R. Goldstein, Alyse M. Laliberte,  
Martin Keszler. — Abstract 123



**40 Practice Variations in Initiation of Inhaled Nitric Oxide (iNO) in Persistent Pulmonary Hypertension in Newborn (PPHN)**  
*M. Favara, D. Alapati, Z. Aghai, R. Locke, R. Ierardi, T.H. Shaffer.* Abstract 124

**41 Correlation of Conventional Bedside Monitoring with Near-Infrared Spectroscopy (NIRS)-Derived Cerebral, Renal, and Splanchnic Oxygen Extraction in Very Low Birth Weight Neonates**  
*Jonathan P. Mintzer, Boriana Parvez, Edmund F. La Gamma.* Abstract 125

**42 Correlation of Arterial Blood Gases with Near-Infrared Spectroscopy (NIRS)-Derived Cerebral, Renal, and Splanchnic Oxygen Extraction in Very Low Birth Weight Neonates**  
*Jonathan P. Mintzer, Boriana Parvez, Edmund F. La Gamma.* Abstract 126

**43 Venoarterial Extracorporeal Life Support for Neonatal Respiratory Failure: Indications and Impact on Mortality**  
*Nicolas A. Bamat, Sasha J. Tharakan, James T. Connelly, Holly L. Hedrick, Scott A. Lorch, Natalie E. Rintoul, Susan B. Williams, Kevin C. Dysart.* Abstract 127

**44 Correlation between Oxygen Use and Systemic Hypertension in Preterm Neonate**  
*Astha Koolwal, Gary E. Stahl, Rakesh Sharma, Alla Kushnir.* Abstract 128

**45 Does Use of Non-Invasive Ventilation Modes Impact Outcomes?**  
*Ajay Pratap Singh, James A. Shelton, Satyan Lakshminrusimha, Praveen Chandrasekharan.* Abstract 129

**46 Effect of Ventilation Mode on Spontaneous Breathing Trial Pass and Extubation Success - An APEX Sub-Study**  
*Khushbu Shukla, Wissam Shalish, Alyse LaLiberte, Lajos Kovacs, Sanjay Chawla, Guilherme M. Sant'Anna, Martin Keszler.* Abstract 130

**47 Adherence to the Neonatal Resuscitation Program Recommendations in Preterm Infants**  
*Amy E. DiPilato, Victoria L. Blanca, Joseph R. Isler, John M. Lorenz, Tina A. Leone.* Abstract 131

**48 Evaluating the Effectiveness of a Novel Neonatal Virtual Simulation Model in Training on the Management of Neonatal Emergencies**  
*Kendra Kolb, Sharon Calaman, Ogechukwu Menkiti, Jane McGowan, Paul J. Diefenbach, Bruce A. Bernstein, Shannon Wells.* Abstract 132

**49 Is Temperature Stabilization of Preterm Newborns in the "Golden Hour" Still a Target for Intervention?**  
*Kristyn S. Beam, Caroline Elbaum, Micheal Tanguay, Shelly Sepulveda, Olaf Dammann, Christiane Dammann.* Abstract 133

**50 Measuring Adherence to Neonatal Resuscitation Program (NRP) Guidelines With Video Recording**  
*Christine Ennis, Rachel Baldwin, Tina Hendler, Lauren Kibler, Mandy Pennington, Lauren Walker, Monica Burnett, Haritha Vellanki, Robert Locke.* Abstract 134

**51 Non-Inferiority Trial of NRAS as an Alternative to the Apgar Score**  
*Aditi Gupta, Teresa J. Witcher, Vidhya L. Kumar, Shadi Jurdi, Henry J. Rozycki.* Abstract 135

**52 In What Circumstances Will a Neonatologist Decide a Patient Is Not a Resuscitation Candidate?**  
*Peter D. Murray, Mark R. Mercurio.* Abstract 136

**53 Counseling for Personal Care Options at Neonatal End of Life: A Quantitative and Qualitative Parent Survey**  
*Emily Shelkowitz, Sharon L. Vessella, Patricia O'Reily, Richard Tucker, Beatrice E. Lechner.* Abstract 137

**54 Evaluation and Analysis of the Modified Finnegan Scoring System for Assessment of NAS**  
*Rafia Q. Baloch, Jamie Pinto, Michael Graff, David Ramos, Patricia Kooker, Yen-Hong Kuo, Anita Siu.* Abstract 138

**55 Improvements in Timing of Antibiotic Administration in a Quaternary Care NICU: A One Year Perspective**  
*M. Schmatz, L. Srinivasan, M. Tremoglie, R. Grundmeier, A. Perez, S. Ostapenko, M. Chilutti, M.C. Harris.* Abstract 139

**56 An Early Warning Tool to Recognize Late Onset Neonatal Sepsis**  
*Jenny R. Fox, Barbara Reyna, Mark T. Astoria, Leroy R. Thacker, Karen D. Hendricks-Munoz.* Abstract 140

**57 O2 Targets in Persistent Pulmonary Hypertension of Newborn (PPHN) - A Survey**  
*D. Alapati, R.K. Jassar, T.H. Shaffer.* Abstract 141

**58 Telemedicine Visits Improve Transition to Home for Infants Requiring Complex Care**  
*Nicole Pouppirt, Marisa Brant, Albert Kim, Janet Lioy, John Chuo.* Abstract 142

**59 Best Practices for Enhancing Safety During High Risk Bedside Airway Procedures in Neonates**  
*Janet Lioy, Luv R. Javia, Leane Soorikian.* Abstract 143

**60 Neonatal Intensive Care Unit Management during Laser Treatment for Type 1 Retinopathy of Prematurity**  
*Laura M. Tiedemann, Lamia M. Soghier, Marijean M. Miller.* Abstract 144

**61 Does Respiratory Status Drive Antibiotic Prescribing in Preterm Infants?**  
*Jessica E. Duby, Alan M. Groves, Jeffrey M. Perlman.* Abstract 145

**62 Neonatal Transfusion Survey: Evidence-Based Knowledge vs. Practice**  
*Sripriya Sundararajan, Natalie L. Davis, Chinazo Meniru, Adora Okogbule-Wonodi, Abigail I.B. Aghion, Faeq Al-Mudares, Alison J. Falck.* Abstract 146

**63 Maternal Diabetes Mellitus and Hypertension Are Protective for Refractory Hypotension in the Extremely Low Birth Weight Infants (ELBW, Birth Weight < 1000 g)**  
*Rita P. Verma, Ramkishan Gonuguntla, Shaequa Dasnadi, Yuan Zang.* Abstract 147

**64 Excipient Exposure in Preterm Very Low Birth Weight Neonates (VLBW)**  
*Temitope Akinboni, Natalie Davis, Sandra Mooney, Alison Falck, Cynthia Bearer.* Abstract 148

**65 Socioeconomic Analysis of Newborn Resuscitation Guidelines at the Limits of Viability**  
*Elliott M. Weiss, Emily S. Echevarria, Ursula Guillen, Jennifer F. Culhane, John Zupancic, J. Felipe Garcia-Espana, Haresh Kirpalani.* Abstract 149

**66 Reducing IVH in a Level III NICU**  
*Lori Christ, Jessica Barber, Melissa Dunleavy, Jason Stoller, Dalal Taha, Loretta Brown-Jackson, Meredith McElroy, Michael Posencheg.* Abstract 150

**67 Optimization of Total Parenteral Nutrition (TPN) and Growth in the Very Preterm Infant: A Quality Improvement Project**  
*Katie R. Forman, Deborah Campbell, Mamta Fuloria, Alecia Thompson-Branch, Mariam S. LaTuga, Suhas Nafday.* Abstract 151

**68 Educational Interventions and Increasing Awareness Can Improve Antibiotic Timeliness**  
*Eric M. Ly, Natalie Davis, Omayma Kishk, Treza James, Sara Mola, Colleen Driscoll.* Abstract 152

**69 Effect of Standardizing Neonatal Abstinence Syndrome Treatment and Weaning Protocols in a Level III NICU**  
*Sharina Rajbhandari, Kashish Mehra, Sonika Loona, Anastasia Mikhno, Mark A. Keller, David L. Schutzman.* Abstract 153

**70 Targeting Unplanned Extubations in the Neonatal Intensive Care Unit: A Multidisciplinary Quality Improvement Patient Safety Initiative**  
*Catherine Markel, Amanda M. Ring, Suzanne M. Touch.* Abstract 154



**71** Oxygen Saturation Limits for Very Low Birth Weight Infants  
*Joanna C. Beachy, Yaron Firiezen.*  
 Abstract 155

**72** Intranasal Sedation During MRI in Infants: A Single Center Experience  
*Jherna Balany, Lynn Zeits, Shadi Malaeb, Archana Malik, Anja Mowes, Nicholas Obiri.*  
 Abstract 156

**73** Icy Infants Quality Improvement Project: Improving Admission Temperatures in Very Low Birth Weight Infants  
*David Carola, Robyn Daley, Susan Jeffrey, Jennifer King, Lyn Kinkle, Nancy Seraydarian, Patoula Panagos.*  
 Abstract 157

**74** Reducing the Incidence of Hypothermia and Hypoglycemia During Neonatal Transport  
*Suhasini Kaushal, Deborah A. Hoy.*  
 Abstract 158

**75** A Novel Slot Retractor for Frenotomy  
*Nghia N. Tran, Gita Jani, Chinedum N. Udenze-Utah, Shehia S. Siddiqui, Leonard M. Golub, Tariq Rahman, Thomas H. Shaffer.*  
 Abstract 159

**76** Standardizing Umbilical Catheterization in the NICU Using a Job Instruction Sheet  
*Waleed Kurtom, Steven K. Brady, Laura Biava, Yvette Conyers, Deborah Quast, Pravash Mukherjee, David Oelberg, C.W. Gowen, Sandip Godambe.*  
 Abstract 160

**77** Changes in Early-Onset GBS Sepsis Evaluation Following a QI Project  
*Rosemary Nunez-Davis, Saba Faranaaz-Kabir, Shaina Lodhi, Samia Aleem, Marie Katrina Tan, Agnes Salvador.*  
 Abstract 161

**78** Implementation of Cue-Based Feeding Scale in a Community Hospital NICU: A Pilot Quality Improvement Initiative  
*Jennifer Oshita, Uday Patil, Randi Wasserman.*  
 Abstract 162

**79** Potentially Better Practices Reduce Intraventricular Hemorrhage (IVH) in Infants < 30 Weeks  
*Jayson V. Ligan, Christina A. Sollinger, Jeffrey M. Meyers.*  
 Abstract 163

**80** Implementation of Fluid Management Practices to Improve Growth for VLBW Infants  
*Farah Hussain, Lora Warren, Alexander Knee, Rachana Singh.*  
 Abstract 164

**81** Effect of Magnesium Level on Neonatal Outcomes Among Preterm Infants Who Received Antenatal Magnesium for Neuroprotection  
*Amanda Brown, Deepa Narasimhulu, Neha Egbert, Mary Rojas, Alok Bhutada, Shoshana Haberman, Shantanu Rastogi.*  
 Abstract 165

**82** Effects of Post-Acute Care Inpatient Rehabilitation (PACIR) on Inpatient Length of Stay (LOS) in Preterm Infants with GA <30 Weeks  
*Meenakshi Singh, Boriana Parvez, Agnes Banquet, Jordan S. Kase.*  
 Abstract 166

**83** Impact of ACOG Guidelines and NYSDOH initiatives on Preterm Birth Rates in Erie County, NY  
*Vikramaditya Dumpa, Gregory Young, Indirapriya Darshini Avulakunta, James Shelton, Satyan Lakshminrusimha.*  
 Abstract 167

**84** Neonatal Outcomes of Multiple Gestation Very-Low-Birth-Weight Infants Born After Assisted Fertility  
*Dustin D. Flannery, Kevin Dysart, Sara DeMauro, Elizabeth Foglia, Erik Jensen, Alison Cook, Jay Greenspan, Zubair H. Aghai.*  
 Abstract 168

**Saturday, March 12**  
**Platform Session**  
**Adolescent Medicine**

**8:00am-9:30am** — *Rhapsody*  
 Moderators: Ruth Milanaik

**8:00am**  
**Youth Aggression/Delinquency: Association with Poor Parent Temperament Alone and in the Context of Other Parenting Styles**  
*Alexandra Hua, Tammy B. Pham, Anne Shattuck, Andrew Adesman.*  
 Abstract 169

**8:15am**  
**The Relative Importance of Peer Networks and School Environments for Dieting Behaviors in Youth**  
*Tracy Richmond, Carly Milliren, Kendrin Sonneville, Holly Gooding, Clare R. Evans.*  
 Abstract 170

**8:30am**  
**Parental Knowledge and Attitudes on HPV Vaccination in Male Adolescents**  
*Katarzyna Maryniak, Paulo R. Pina, David H. Rubin.*  
 Abstract 171

**8:45am**  
**Patterns of Substance Use in Adolescents Presenting to Primary Care**  
*Leah M. Downey, Kelly Serafini, Brandon Matsumiya, Carolyn McCarty, Laura P. Richardson.*  
 Abstract 172

**9:00am**  
**Attitudes Towards Guns and Violence in Children and Adolescents in Relationship with Acculturation, Exposure to Bullying, Gang Association, Depression and Perceived Nutritional Status**  
*Harpavan S. Sandha, David Fagan, Krishan Kumar, Yash Shah, Fernanda E. Kupferman.*  
 Abstract 173

**9:15am**  
**Impact of a Medically Complex Patient Care Model on Cost and Utilization among Adolescents and Young Adults with Special Health Care Needs**  
*Thomas W. Davis, Daniel Maeng.*  
 Abstract 174

**Emergency Medicine I**

**8:00am-9:30am** — *Concerto AB*  
 Moderators: Hnin Khine, Joni Rabiner

**8:00am**  
**Secondary Imaging for Suspected Pediatric Appendicitis with Equivocal Ultrasound Results: MRI Versus CT**  
*James F. Martin, David J. Mathison, Paul C. Mullan, Hansel Otero.*  
 Abstract 175

**8:15am**  
**Can Point-of-Care Elbow Ultrasonography Reduce the Use of Radiography for Elbow Trauma in Children?**  
*Julia R. Tokarski, Joni R. Rabiner, Jeffrey R. Avner.*  
 Abstract 176

**8:30am**  
**Performing Point-Of-Care Ultrasound (POCUS) Can Reduce Pain and Number of X-Rays Performed on Young Children With Fractures**  
*Mary E. Emborsky, Tara Petroski, Kunal Chadha, Brian Wrotniak, Haiping Qiao.*  
 Abstract 177

**8:45am**  
**Management of Intussusception: Reduction Type and Recurrence Rates**  
*Andrea T. Vo, David L. Goldman, Hnin Khine.*  
 Abstract 178

**9:00am**  
**"Do You See What I See?": Evaluating the Fundus With a Retinal Camera By Pediatric Emergency Medicine (PEM) Providers**  
*Elizabeth Prabhu, Faith Birnbaum, Spencer Darveau, Susan Duffy, Wendy Chen, Dale Steele.*  
 Abstract 179

**9:15am**  
**The Pediatric Emergency Care Applied Research Network Guidelines for Head CT Use in Pediatric Head Trauma: Adherence to Guidelines and Factors Influencing It**  
*Vineet Lamba, Joshua Fogel, Sena Cantas-Orsdemir, Lambros D.G. Angus, Krishan Kumar, David Fagan, Brinda Doraiswamy.*  
 Abstract 180

**General Pediatrics I**

**8:00am-9:30am** — *Maestro A*  
 Moderators: Kirsten Bechtel

**8:00am**  
**Impact of English Proficiency on Asthma Outcomes in Hospitalized Children**  
*Prattichi K. Goenka, Zachary Klein, Kevin D. Masick.*  
 Abstract 181

8:15am

**Validation of an Asthma Medication Barrier Scale**  
Aparna C. Yadatore, Alyson W. Smith, Uri Belkind,  
Paulo R. Pina, David H. Rubin.  
Abstract 182

8:30am

**Impact of a Physician-Led Multidisciplinary Home Visiting Program on Children With Asthma**  
Alejandro Negrete, Maureen Braun,  
Nicole Tennermann, Kanasha Seales,  
Sanite Theophile, Alissa Pierre-Charles, Joseph Truglio, Elaine Lin.  
Abstract 183

8:45am

**Total Asthma Cost Analysis and Return on Investment Using Claims Data from a Medicaid Managed Care Organization**  
Elizabeth R. Woods, Susan J. Sommer, Judith F. Giller-Leinwohl, Mary Thuo, Shari Nethersole, Urmi Bhaumik.  
Abstract 184

9:00am

**Community-Based Assessment of Influenza Vaccination and Temporally-Related Incidence of Acute Respiratory Infections**  
Sharon Rikin, Haomai Jia, Celibell Vargas, Yaritza Castellanos de Belliard, Carrie Reed, Philip LaRussa, Elaine L. Larson, Lisa Saiman, Melissa S. Stockwell.  
Abstract 185

9:15am

**The Relative Contributions of Adverse Childhood Experiences and Healthy Environments to Child Flourishing**  
Iman Sharif, Dana Thompson, Aileen Fink.  
Abstract 186

### Human Milk/Breastfeeding

8:00am-9:30am — **Aria AB**  
Moderator: Lori Christ

8:00am

**Implementation of Standardized Feeding Guidelines for 34 Week Infants Increases Rates of an Exclusive Breast Milk Diet on Discharge**  
Laura H. Rubinos, Laura Carpenter, Traci Fauerbach, Lori Christ.  
Abstract 187

8:15am

**Breastfeeding Quality Improvement in Hospitals (BQIH) Significantly Improves Exclusive Breastfeeding in a Community Hospital**  
Yogangi Malhotra, Sheri Nemerofsky, Lilian Gonzalez, Barbara A. Dennison, Celia Bertuzzi, Suhas Najday.  
Abstract 188

8:30am

**Effect of Milk Maturation on Breast Milk Immune-Modulators in Preterm Human Milk**  
A. Nayak, A. Vinci, M. Botros, M. Bustoros, E. Gurzenda, X. Lin, N. Hanna.  
Abstract 189

8:45am

**The Microbiota of Human Milk Relative to Macronutrient Content**  
Maushumi Assad, Jennifer Trzaski, Melissa J. Caimano, Joerg Graf, Adam P. Matson, Elizabeth A. Brownell.  
Abstract 190

9:00am

**Provider Perspectives on the Nature of Breastfeeding Support During Prenatal Care for African American Women**  
Ekene Ojukwu, Jennifer A. Callaghan-Koru, Jessica Bienstock, Azadeh Farzin.  
Abstract 191

9:15am

**Does Human Milk Fortifier Affect Intestinal Inflammation in Very Low Birth Weight (VLBW) Infants?**  
Harshit Doshi, Champa Codipilly, Shachee P. Pandya, Richard Schanler.  
Abstract 192

### Infectious Disease

8:00am-9:30am — **Minuet**  
Moderator: Eugene Shapiro

8:00am

**A Natural History of Pediatric HIV: 30 Years into the Pandemic**  
Donna Tyungu, Sharon Vuppula, Aditya Kaul, Sulachni Chandwani, Wm. Borkowsky.  
Abstract 193

8:15am

**Thirty-Month Assessment of the Neonatal Pertussis Prevention Act on Whooping Cough Rates in New York State**  
Shetal I. Shah, Heather L. Brumberg.  
Abstract 194

8:30am

**Extended-Spectrum - Lactamase-Producing Enterobacteriaceae in Pediatrics**  
Jonathan Stryzko, Vidya Mony, Jeremiah Cleveland, Hanna Siddiqui, Christina Gagliardo.  
Abstract 195

8:45am

**Impact of Antimicrobial Stewardship Program Restrictions on Palivizumab Administration Implemented through the Electronic Health Record**  
Torsten A. Joerger, Lori K. Handy, Sanjeev K. Swami, Shannon Chan.  
Abstract 196

9:00am

**HPV Vaccine Information/Motivation Sheet: A Quality Improvement Initiative to Increase HPV Vaccination**  
Connie Kim, Rachel R. Osborn, Ada Fenick.  
Abstract 197

9:15am

**Bacille Calmette Guérin (BCG) Alone or in Combination With Hepatitis B Vaccine (HBV) Activates Innate Cytokine Production in Preterm Cord Blood**  
Annette Scheid, David J. Dowling, Ilana Bergelson, Matthew A. Pettengill, Sweta Joshi, Ning Li, Helen Christou, Tobias Kollmann, Ofer Levy.  
Abstract 198

### Neonatal Neurology I

8:00am-9:30am — **Overture**  
Moderator: Shadi Malaeb

8:00am

**Regulatory Effect of Src Kinase on Cytochrome C Following Hypoxia in the Neuronal Cytosolic Fraction of Newborn Piglets Brain**  
Panagiotis Kratimenos, Ioannis Koutroulis, Anja Mowes, Amit Jain, Shadi Malaeb, Maria Delivoria-Papadopoulos.  
Abstract 199

8:15am

**Inhibition of NF- B in Microglia Downregulates Macrophage Migration Inhibiting Factor and Improves Neurodevelopmental Outcome in Periventricular Leukomalacia (PVL)**  
Vinisha Singhi, Nahla Zaghoul, Mohamed Ahmed.  
Abstract 200

8:30am

**Decreasing IL-4 Improves Myelination in Intrauterine Growth Restriction (IUGR) Rat Brain**  
Allison E. Zanno, Micah A. Romer, Lane Jaeckle Santos, Judith Grinspan, Rebecca Simmons.  
Abstract 201

8:45am

**Troponin T as a Predictor of Short Term Outcomes in Infants with Hypoxic-Ischemic Encephalopathy**  
David Carola, Kathleen S. Schwabenbauer, Dustin D. Flannery, Michael Favara, Zubair H. Aghai.  
Abstract 202

9:00am

**Pattern of Brain Injury and Depressed Heart Rate Variability in Newborns With Hypoxic Ischemic Encephalopathy (HIE)**  
Marina Metzler, R.B. Govindan, Tareq Al-Shargabi, Gilbert Vezina, Nickie Andescavage, Adre du Plessis, An N. Massaro.  
Abstract 203

9:15am

**Predictive Value of aEEG Time to Normalization and Time to Cycling in Neonates with Hypoxic Ischemic Encephalopathy (HIE) Receiving Therapeutic Hypothermia (TH)**  
Elizabeth K. Sewell, Gilbert Vezina, Taeun Chang, Tammy Tsuchida, Kari Harris, Michelande Ridore, Nadia Kadri, An N. Massaro.  
Abstract 204

**Pulmonology**

8:00am-9:30am — **Maestro B**  
Moderator: Americo Esquibies

**8:00am**

**A Purinergic P2Y6 Receptor Agonist Reduces Lung Inflammation in a Murine Asthma Model**  
Heber C. Nielsen, Anne Chetty, Azeem Sharda, Rod Warburton, Chang Xue, Tianmeng Chen, John J. Castellot, Philip G. Haydon.  
Abstract 205

**8:15am**

**Change in Pulmonary Function with Weight Gain in Minority Children with Asthma**  
Azadeh A. Issapour, Esther Matta, Jaewon Choi, Charles B. Hall, Deepa Rastogi.  
Abstract 206

**8:30am**

**Energy Expenditure During Sleep & Quality of Life in Children With Cystic Fibrosis**  
Luis E. Ortiz, Shruti M. Paranjape.  
Abstract 207

**8:45am**

**The Cessation of Asthma Controller Medications During the Summer Months in Children With Persistent Asthma**  
Monica H. Lee, Mona Sadegh, Scott A. Schroeder.  
Abstract 208

**9:00am**

**Circadian Regulation of Lung Inflammation in Influenza A Infection**  
Shaon Sengupta, Jia Xue, Carolina B. Lopez, Garret A. FitzGerald.  
Abstract 209

**9:15am**

**EC-SOD Can Prevent the Progression of Pulmonary Hypertension Induced By Hypoxia to Chronic Stages**  
Jorge M. Lopez Da Re, Hardik Patel, Kameshwar Ayyasola, Nahla Zaghoul, Kanta Ochani, Edmund Miller, Mohamed Ahmed, Nasim Mansoor.  
Abstract 210

**Saturday, March 12**

**Platform Session  
Allergy/Immunology and  
Nephrology**

9:45am-11:15am — **Minuet**  
Moderator: Beatrice Goilav

**9:45am**

**Exploration of Factors Contributing to Time to Achieve Clinically Inactive Disease (CID) in Juvenile Idiopathic Arthritis (JIA): A Preliminary Report**  
Suhask K. Ganguli, Max Shenberger, Ritesh Korumilli, Beth S. Gottlieb.  
Abstract 211

**10:00am**

**The Influence of Cytokines Associated with Cellular Immunity on Human Vascular Adventitial Cells in a Synthetic 3D Environment**  
Rebecca L. McPherson, Robert E. Akins.  
Abstract 212

**10:15am**

**Cell-Bound Complement Activation Products Have High Sensitivity and Specificity in Childhood-Onset Systemic Lupus Erythematosus and Juvenile Idiopathic Arthritis**  
Joyce Hui-Yuen, John Conklin, Derren Barken, Tyler O'Malley, Xiao Li, Liza Bermudez, Andrew Eichenfield, Amy Starr, Lisa Imundo, Thierry Dervieux, Anca Askanase.  
Abstract 213

**10:30am**

**Differentially Expressed Synovial Fluid Proteins Distinguish Children Who Will Have Persistently Oligoarticular Juvenile Idiopathic Arthritis from Those Who Will Have an Extended Course**  
AnneMarie C. Brescia, Megan M. Simonds, Kathleen E. Sullivan, Carlos D. Rose.  
Abstract 214

**10:45am**

**Par1a or 1b Deletion Increases Severity of Acute Kidney Injury in Mice**  
Abhijeet Pal, Zhongfang Du, James M. Pullman, Kimberly Reidy.  
Abstract 215

**11:00am**

**Factors Associated with Under-Diagnosis of Hypertension in a Large Cohort of Overweight/ Obese Adolescents**  
Brian Sykes, Divya Moodalbil, Christopher Larosa, Joshua Zaritsky.  
Abstract 216

**Critical Care**

9:45am-11:15am — **Maestro A**  
Moderator: Kevin Couloures

**9:45am**

**Reliability and Validity of the Richmond Agitation and Sedation Scale (RASS) in Critically Ill Children**  
Rebecca DeMaria, Abigail G. Kerson, Elizabeth Mauer, Christine Joyce, Linda M. Gerber, Chani Traube.  
Abstract 217

**10:00am**

**Randomized Controlled Trial of High Concentration Oxygen Versus Titrated Oxygen Therapy in Pediatric Asthma Exacerbation**  
Bhavi Patel, Hnin Khine, Ami Shah, Lewis Singer.  
Abstract 218

**10:15am**

**Tracheal Intubation Associated Events Following Noninvasive Ventilation Failure**  
Christina K. Walsh, Josep M. Panisello, Akira Nishisaki, Guillaume Emeriaud, John S. Giuliano.  
Abstract 219

**10:30am**

**Examination of the TNF:GM-CSF Cytokine Axis as a Biomarker of Pulmonary Infection**  
E. Scott Halstead, Gavin R. Graff, Neal J. Thomas.  
Abstract 220

**10:45am**

**24 Years of Ethics Consultation at a Children's Hospital**  
Olivia M. Seecof, Iman Sharif, Jonathan M. Miller.  
Abstract 221

**11:00am**

**Lung Rest During ECMO for Neonatal Respiratory Failure**  
D. Alapati, Z. Aghai, J. Hossain, D.R. Dirnberger, M.T. Ogino, T.H. Shaffer.  
Abstract 222

**Education/Epidemiology**

9:45am-11:15am — **Rhapsody**  
Moderator: Ronald Marino

**9:45am**

**Interrelationship and Predictors of Fetal and Infant State Mortality: An Ecological Model**  
Kriti Yadav, Dana Thompson, David Paul, Edward J. Gracely, Robert Locke.  
Abstract 223

**10:00am**

**Face-to-Face and Cyber Victimization Differently Associated with Parenting Style**  
Alexandra Hua, Tammy B. Pham, Anne Shattuck, Andrew Adesman.  
Abstract 224

**10:15am**

**National Trends in Prevalence and Co-Morbid Chronic Conditions among Children with Asthma, Autism Spectrum Disorder, and Attention Deficit Hyperactivity Disorder**  
Christian D. Pulcini, Bonnie Zima, Kelly Kelleher, Amy J. Houtrow.  
Abstract 225

**10:30am**

**Prevalence of Depression Symptoms of Pediatric Residents**  
Alexandra Hua, Tammy B. Pham, Cara Jacobson, Chuck Ng, Ruth L. Milanaik.  
Abstract 226

**10:45am**

**Understanding the Timing of Career Decisions by Pediatric Residents and the Factors That Play a Role: A Survey of Graduated Pediatric Resident Graduates**  
Thuy L. Ngo, Barry S. Solomon, Jeffrey Fadrowski, Janet R. Serwint.  
Abstract 227

**11:00am**

**A Randomized Controlled Trial: Does Guidance Using Video Laryngoscopy Improve Residents' Success in Neonatal Intubations?**  
Sarah Volz, Timothy P. Stevens, Rita Dadiz.  
Abstract 228

**Emergency Medicine II**

9:45am-11:15am — *Concerto AB*  
Moderator: *Khoon-Yen Tay*

**9:45am**

**Factors Associated With Hospitalization and Readmission of Young Children With Bronchiolitis After an Emergency Department (ED) Visit**  
*James T. Luckey, Lisa Bakhos, Anna Petrova.*  
Abstract 229

**10:00am**

**Observation Time for Acute Single-Use Detergent Sac (SUD) Ingestions Among Children**  
*Caroline O. Adegite, Trudy Lerer, Sharon R. Smith.*  
Abstract 230

**10:15am**

**Improving Pediatric Asthma Care in a Community Emergency Department**  
*Theresa A. Walls, Naomi T. Hughes, Paul Mullan, Christine Rawlinson, James M. Chamberlain, Kathleen Brown.*  
Abstract 231

**10:30am**

**Prescribing Controller Therapy for Asthma upon Discharge from a Pediatric Emergency Department: A Quality Improvement Initiative**  
*Tian Liang, Munish Kumar, Cara Miller, Darshan Patel, Allen J. Dozor, Sankaran Krishnan.*  
Abstract 232

**10:45am**

**Ideal Observation Time after Racemic Epinephrine in the Pediatric Emergency Department for Those with Croup**  
*Nadine M. Smith, Katie Giordano.*  
Abstract 233

**11:00am**

**Discharge Instructions Understanding Disparities Among Parents Presenting to a Pediatric Emergency Department**  
*Noah Kondamudi, David Aviles, Sushma Ravivala.*  
Abstract 234

**Neonatology - Necrotizing Enterocolitis**

9:45am-11:15am — *Aria AB*  
Moderators: *Rose Viscardi, Natalie Davis*

**9:45am**

**Impact of PRBC Transfusions on Intestinal Barrier Function in Preterm Infants**  
*Olayemi Ola, Bushra Saleem, Natalie L. Davis, Adora C. Okogbule-Wonodi, Chinazo O. Meniru, Rose M. Viscardi.*  
Abstract 235

**10:00am**

**Aryl Hydrocarbon Receptor Ligand Indole-3-Carbinol Attenuates Neonatal Intestinal Inflammation**  
*Zerina Hodzic, Congrong Ma, Derek Pociask, Jay K. Kolls, Misty Good.*  
Abstract 236

**10:15am**

**Assessing the Impact of Holding Feedings during PRBC Transfusion on the Incidence of Transfusion Related Gut Injury (TRAGI) in Preterm Infants**  
*Shannon Rindone, Alexander Knee, Robert Rothstein, Rachana Singh.*  
Abstract 237

**10:30am**

**Fecal Microbiota of Premature Infants With and Without Necrotizing Enterocolitis in the Central Connecticut Region**  
*Tristan P. Lindberg, Melissa P. Caimano, Erin M. Bennett, Joerg Graf, Adam P. Matson.*  
Abstract 238

**10:45am**

**The Association Between Necrotizing Enterocolitis and Prior Antibiotic Exposure Is Time-Dependant**  
*Jennifer Duchon, Lisa Saiman, Luis Alba, Haomiao Jia.*  
Abstract 239

**11:00am**

**Necrotizing Enterocolitis(NEC) and Its Association with the Use of Umbilical Vascular Catheters in ELBW Infants**  
*Naveed Hussain.*  
Abstract 240

**Neonatology - Pulmonary/ Ventilation**

9:45am-11:15am — *Overture*  
Moderators: *Jim Cummings, Kate Tauber*

**9:45am**

**Effect of SpO<sub>2</sub> on Pulmonary Hemodynamics, Oxygen Delivery and Oxidative Stress in Meconium Aspiration Syndrome (MAS)**  
*Munmun Rawat, Praveen Chandrasekharan, Sylvia Gugino, Lori Nielsen, Stephen Wedgwood, Satyan Lakshminrusimha.*  
Abstract 241

**10:00am**

**Maternal Hyperoxygenation Does Not Increase Fetal Cerebral Oxygen Delivery**  
*Nithi Fernandes, Praveen Chandrasekharan, Munmun Rawat, Payam Vali, Sylvia Gugino, Carmon Koenigsnecht, Satyan Lakshminrusimha.*  
Abstract 242

**10:15am**

**Quantitative Description of Cardiorespiratory Event Rates in the NICU**  
*Johnathan P. Keenum, Joseph R. Isler, David A. Bateman, Rakesh Sahni.*  
Abstract 243

**10:30am**

**Utility of Exhaled Breath Condensate in Predicting Bronchopulmonary Dysplasia**  
*Elizabeth Yen, Barry Weinberger, Robert Laumbach, Anna Vetrano, Andrew Gow, Maya Ramagopal.*  
Abstract 244

**10:45am**

**Carbon Dioxide Washout During Humidified High Flow vs. Nasal CPAP Support: An In-Vitro Study**  
*Emidio M. Sivieri, Soraya Abbasi.*  
Abstract 245

**11:00am**

**Impact of Neonatal Endotracheal Tube Biofilm on Resistance and Mechanics of Breathing**  
*Kaitlin M. McLean, Tom Blackson, Joseph Ciarlo, Lori Boylan, Micheal Antunes, Thomas H. Shaffer, Robert Locke.*  
Abstract 246

**Neonatology - Quality Improvement**

9:45am-11:15am — *Maestro B*  
Moderators: *Jay Greenspan, Patoula Panagos*

**9:45am**

**Time to First Hold: Quality Improvement Project Using Lean Six Sigma Methodology to Decrease the Time to Parents' First Hold of Infants in the NICU**  
*Kaitlin M. McLean, Julia D. Ryan, Annette L. Rickolt, John L. Stefano.*  
Abstract 247

**10:00am**

**ROAD to Alarm Safety: Reducing Oximeter Alarm Desensitization Through Quality Improvement in the NICU**  
*K.R. Johnson, D. Hill, J. Moore, C. Raymond, J.I. Hagadorn, D.W. Sink.*  
Abstract 248

**10:15am**

**Reducing "Decision to Incision" Time to Perform Emergency C-Section Procedures**  
*Srisatish Devapatla, Ramesh Vidavalur, Rohit Verma, Sal Agnihotri.*  
Abstract 249

**10:30am**

**Supporting Neonatal Intensive Care Unit Staff Through Post-Death Debriefings**  
*Nasim Gorji, Gina Geis.*  
Abstract 250

**10:45am**

**A Longitudinal QI Project Comparing Delayed Cord Clamping for 45 Versus 30 Seconds in Preterms**  
*Jeanne Nunez, Elizabeth Cristofalo, Cynthia Argani, Maureen Gilmore.*  
Abstract 251

**11:00am**

**Improving the Diagnosis of Neonatal Hypoglycemia**  
*Eric Ly, Jennifer P. Alexander, Temi Akinmboni, Hyung Chul Woo, Chinazo O. Meniru, Colleen Hughes Driscoll.*  
Abstract 252



## Saturday, March 12

### Plenary Session I

#### Plenary Lecture

11:30am-12:30pm – Symphony Ballroom

Renee Reijo Pera, MD

Timing in Human Embryo Development:  
Species specific sequences and disease

#### Fellows' Clinical Case

#### Presentation Competition

12:40pm – 1:40pm – Symphony Ballroom

#### Eastern SPR Business Meeting

12:40pm – 1:40pm – Rhapsody (4th Floor)

## Saturday, March 12

### Plenary Session II

#### Young Investigator Award

#### Finalists - Trainees

2:30pm-4:15pm — Symphony Ballroom

Moderator: Joe Bliss

#### 2:30pm

Both Antenatal and Postnatal Inflammation Contribute Information About the Risk of Brain Damage in Extremely Preterm Newborns

Diana Yanni, Steven Korzeniewski, Elizabeth N. Allred, Raina N. Fichorova, T. Michael O'Shea, Karl Kuban, Olaf Dammann, Alan Leviton.

Abstract 253

#### 2:45pm

Cangrelor: A New P2Y12 Inhibitor for Prevention of Shunt Thrombosis in Neonates with Congenital Heart Disease

Elisabeth Kaza, Hairu Zhou, Tamar Mendelsberg, Julie Vincent, Emile Bacha, Thomas Diacovo.

Abstract 254

#### 3:00pm

Permeability Transition Pore Closure Increases Mitochondrial Maturation and Myocyte Differentiation In Vitro and Cardiac Function In Vivo in the Neonatal Mouse Heart

Jayson V. Lingan, George A. Porter.

Abstract 255

#### Young Investigator Award

#### Finalists - Faculty

2:30pm-4:15pm — Symphony

Moderator: George Porter

#### 3:30pm

Continuous Capnography Monitoring During Resuscitation in Neonatal Asphyxial Cardiac Arrest

Praveen Chandrasekharan, Payam Vali, Munmun Rawat, Sylvia Gugino, Carmon Koenigsnecht, Justin Helman, Jayasree Nair, Bobby Mathew, Sara Berkelhamer, Satyan Lakshminrusimha.

Abstract 256

#### 3:45pm

TGF- Regulates the Expression of IL-4R Differentially in Neonatal and Adult Dermal Fibroblasts

Sripriya Sundararajan, Virginia Lockatell, Zahid Noor, Irina G. Luzina, Sergei P. Atamas.

Abstract 257

#### 4:00pm

Soluble Guanylate Cyclase Activation Improves Vascular Function and Reverses RV Remodeling in a Mouse Model of Sickle Cell Disease Associated Pulmonary Hypertension

Karin P. Potoka.

Abstract 258

## Saturday, March 12

### Platform Session

#### Developmental Biology

4:30pm-6:00pm — Minuet

Moderator: Zubair Aghai

#### 4:30pm

Premature Birth Increases Population of Interneuron Progenitors in the Ganglionic Eminence of Rabbit Pups

Mahima Tibrewal, Preeti Dohare,

Praveen Ballabh.

Abstract 259

#### 4:45pm

Sex Differences in Gene Expression Are Restricted to Extraembryonic Tissue in Early Post-Implantation Embryos

Tami J. Stuart, Kathleen E. O'Neill, David Condon, Rebecca A. Simmons.

Abstract 260

#### 5:00pm

The Mitochondrial Electron Transport Chain Is Organized Into Supercomplexes

Gisela Beutner, George A. Porter.

Abstract 261

#### 5:15pm

MiRNA Expression in Skeletal Muscle of Children Diagnosed With Cerebral Palsy

Latresa V. Copes, Robert E. Akins.

Abstract 262

#### 5:30pm

Postnatal Dexamethasone Does Not Affect Interneuron Neurogenesis

Muhammad T.K. Zia, P. Dohare, G. Vinukonda, V. Yadala, R. Chawla, Praveen Ballabh.

Abstract 263

#### 5:45pm

Metabolomics in Placenta of a Mouse Model of Preterm Birth

Summer Elshenawy, Amy G. Brown, Guillermo Barila, Michael S. Hester, Samuel Parry,

Rebecca A. Simmons.

Abstract 264

#### Gastroenterology/Bilirubin

4:30pm-6:00pm — Maestro B

Moderator: Pranav Shivakumar

#### 4:30pm

Effect of Total Parenteral Nutrition on the Glutathione Oxidative Stress Pathway

Christina Ferrucci-Da Silva, Le Zhan, Jianliang Shen, Naureen Memon, Grace L. Guo.

Abstract 265

#### 4:45pm

RNA Sequencing of Neonatal Saliva Identifies Objective Biomarkers of Oral Feeding Maturity

Prarthana Khanna, David R. Walt, Jill L. Maron.

Abstract 266

#### 5:00pm

Are NG Feeding Tubes Associated with Increased Gastroesophageal Reflux in Preterm Infants?

Swati Murthy, Zubair H. Aghai.

Abstract 267

#### 5:15pm

Bilirubin Inhibition of L1 Cell Adhesion Molecule (L1) Mediated Neurite Outgrowth

Eric M. Ly, Gail Cameron, Ningfeng Tang, Min He, Cynthia F. Bearer.

Abstract 268

#### 5:30pm

Interleukin-22RA1 Signaling Attenuates Intestinal Inflammation and Promotes Differentiation of Intestinal Stem Cells

Olivia B. Parks, Congrong Ma, Pawan Kumar, William Horne, Jay K. Kolls, Misty Good.

Abstract 269

#### 5:45pm

Assessment of Preterm Infant Post-Discharge Feeding Regimens and Growth in the First Year

Cristina R. Fernandez, Sudha Kashyap.

Abstract 270

### General Pediatrics II

4:30pm-6:00pm — Concerto AB

Moderator: Evan Fieldston

#### 4:30pm

Effects of Caregiver Responses to Child Behavior on Developmental Delays in Young Children in La Romana, Dominican Republic

Omolara T. Uwemedimo, Afrin Howlader, Abdul Qadri, Berlinda Olivier, Giseline Pierret.

Abstract 271

#### 4:45pm

Improving Transitions of Care: The Next Steps Program – A Medical Home for Neonatal Intensive Care Unit (NICU) Graduates

Folasade Kehinde, Renee Turchi, Bruce Bernstein, Katherine Sachs, Katie Feehan, Lee M. Pachter.

Abstract 272

#### 5:00pm

Use of Focus Groups to Inform a New Community-Based Youth Diabetes Prevention Program

Nita Vangeepuram, Farrah Khan, Sage Lopez, Crispin Goytia, Carol R. Horowitz.

Abstract 273

#### 5:15pm

Underuse of Proper Child Restraints in Taxis: Are Weak Laws Putting Children in Danger?

Sarah Koffsky, Tammy Pham, Alyson Gutman, Chuck Ng, Jonathan Goldman, Ruth Milanaik.

Abstract 274

**5:30pm**

**Intimate Partner Violence Screening in Pediatric Primary Care: Perceived Barriers, Facilitators, and Potential Interventions**

Swati Goel, Caitlin Kennedy, Madeline Kiefer, Akadia Kacha-Ochana, James Quon, Andrea Gielen, Barry S. Solomon. Abstract 275

**5:45pm**

**Breast Feeding and Formula Selection in Neonatal Abstinence Syndrome**

Amy L. Lembeck, Deborah J. Tuttle, Robert Locke, Pamela Jimenez, Amy B. Mackley, David A. Paul. Abstract 276

**Neonatology - Infectious Disease**

**4:30pm-6:00pm** — **Aria AB**

Moderator: Misty Good

**4:30pm**

**Suspected or Known Neonatal Sepsis and Neurodevelopmental Outcomes at Five Years**

Katrina Fernandez, Christopher Rouse, Apryl Susi, Gregory Gorman, Elizabeth Hisle-Gorman. Abstract 277

**4:45pm**

**Implementation of the Sepsis Risk Score for Neonatal Early-Onset Sepsis Evaluation**

Sagori Mukhopadhyay, Karen M. Puopolo. Abstract 278

**5:00pm**

**Analysis of Cerebrospinal Fluid Reveals Derangement of Metabolism in Infants with Bacterial Meningitis**

Scott M. Gordon, Lakshmi Srinivasan, Soraya Abbasi, Adriana Perez, Marissa Tremoglie, Mary C. Harris. Abstract 279

**5:15pm**

**Novel Therapeutic Use of Galectin-3 in Neonatal Host Defense Against Disseminated Candidiasis**

Prasoon Verma, Sonia S. Laforce-Nesbitt, Richard Tucker, Joseph M. Bliss. Abstract 280

**5:30pm**

**Clinical and Microbiologic Characteristics of Early-Onset Sepsis Among VLBW Infants Over 25 Years**

Sagori Mukhopadhyay, Karen Puopolo. Abstract 281

**5:45pm**

**Video Didactic at Point of Care Impacts Hand Washing Compliance in the NICU**

Maria George, Danthanh Hoang, Nayaab Khawar, Yang Liu, Pramod Narula. Abstract 282

**Neonatology - Potpourri**

**4:30pm-6:00pm** — **Overture**

Moderator: Sema Gogcu

**4:30pm**

**Shift of Cerebral Bioenergetics Metabolism to Succinate Oxidation Following Hypoxic-Ischemic (HI) Insult**

Prateek Sahni, Zoya V. Niatsets kaya, Sergey Sosunov, Vadim S. Ten. Abstract 283

**4:45pm**

**Application of Water-Based Near Infrared Spectroscopy in Newborn Brain Disease**

Shadi Malaeb, Meltem Izzetoglu, John Grothusen, Maria Delivoria-Papadopoulos, Amulya Buddhavarapu, Jane McGowan. Abstract 284

**5:00pm**

**Analgesia During Paw Prick in the Neonatal Rat: Effect on Social Behavior and Pressure Thresholds**

Jennifer P. Alexander, Kristin A. Wellmann, Sandra M. Mooney. Abstract 285

**5:15pm**

**Omega-3 Fatty Acid (FA) Effects on Learning and Memory in Mice**

Luis E. Lozada, Hee-Yong Kim, Abhishek Desai, Karl Kevala. Abstract 286

**5:30pm**

**Neonatal Hypoglycemia and Developmental Outcomes in the First 5 Years**

Stephanie Berdy, Krystin Engelhardt, Jennifer Wherley, Gregory H. Gorman, Elizabeth Hisle-Gorman. Abstract 287

**5:45pm**

**25OH Vitamin D(25OHD) Levels in Very Low Birth Weight (VLBW) Infants Receiving Vitamin D Supplementation**

Upender K. Munshi, Pauline D. Graziano, Kara Meunier, Jennifer Ludke, Angel Rios. Abstract 288

**Neurology**

**4:30pm-6:00pm** — **Maestro A**

Moderator: Lori Billingham

**4:30pm**

**Neuromuscular Blocking Agent Sensitivity During Anesthesia Correlates With Neuromotor Synapse Dysmorphisms in Children With Cerebral Palsy (CP)**

Stephanie K. Yeager, Karyn G. Robinson, Robert E. Akins. Abstract 289

**4:45pm**

**Nerve Transfers for Enterovirus D68 – Induced Acute Flaccid Myelitis: A Case Series and Literature Review**

Eliana B. Saltzman, Schneider K. Rancy, Dale J. Lange, Scott W. Wolfe. Abstract 290

**5:00pm**

**Language at Rest: A Longitudinal Study of Intrinsic Functional Connectivity in Preterm Children**

Megan A. Rowlands, Dustin Scheinost, Cheryl Lacadie, Betty Vohr, Fangyong Li, R. Todd Constable, Laura R. Ment. Abstract 291

**5:15pm**

**Followup Study of 21 Pediatric Patients With Anti-Nmda Receptor Encephalitis (ANMDARE)**

Jay E. Selman. Abstract 292

**5:30pm**

**Visual Outcomes Following Perinatal Ischemic Stroke**

Erin C. Kiskis, Gil Binenbaum, Rebecca N. Ichord, Laura E. Jastrzab, Lori L. Billingham. Abstract 293

**5:45pm**

**Protocol Driven Management of Convulsive Status Epilepticus**

Gina Cassel-Choudhury, Neha Longani, Jules Beal, Ruby Rivera, Chhavi Katyal. Abstract 294

**Obesity**

**4:30pm-6:00pm** — **Rhapsody**

Moderator: Catherine Wiley & Jesse Sturm

**4:30pm**

**Maternal Obesity and Alterations in CD3+ T-Lymphocyte Methylome in Term Infants**

Mamta Fuloria, Yoshinori Seki, Lyda Williams, Shreyans Bengani, Xiu-Quan Du, Francine H. Einstein, Maureen J. Charron. Abstract 295

**4:45pm**

**Infant Sucking Intensity, Weight Gain, and Adiposity in the First 4 Months of Life**

Sani M. Roy, Eileen G. Ford, Danielle C. Drigo, Jingyuan Ma, Gary D. Wu, Shana E. McCormack, Babette S. Zemel. Abstract 296

**5:00pm**

**Relationship between Birth Weight, Obesity Indicators and Metabolic Profile in a Cohort of Obese Children and Adolescents**

Pravesh Sangwan, Yash Shah, Hemangi Bandekar, Sarita Dhuper. Abstract 297

**5:15pm**

**Financing a Weight Management Program for Overweight/Obese Adolescents**

R. Feinstein, S. Di Figlia-Peck, Y. Wahab. Abstract 298

**5:30pm**

**Clinical and Social Factors Associated With Being Overweight at 12 Months in Hispanic Versus Non-Hispanic Children**

Farah Khan, Sahel Hazrati, Kathi Huddleston, Suchi Hourigan, John Niederhuber. Abstract 299

**5:45pm**

**Associations between Asthma and Central Obesity in Children: A Case-Control Study in a Pediatric Emergency Department (PED)**

Nicole Gherlone, Kayla Vosburgh, Christine Mulvey, Sharon Smith, Valerie Duffy. Abstract 300

## Saturday, March 12

### Poster Session III: Emergency Medicine/ Neonatology/Critical Care

6:00pm-7:30pm — Ormandy

- 1** **Pre-Hospital Pediatric Care in New York City 2006-2012: Interventions and Medications**  
*Matthew I. Harris, James Braun, Robert A. Silverman, David Ben-Eli, Glenn Asaeda, John Freese.*  
Abstract 301
- 2** **Trends in ED and Inpatient Utilization by Severely Injured Children 2005-2012**  
*Terry A. Adirim, Marguerite L. Barrett, Elizabeth Edgerton, Pamela L. Owens.*  
Abstract 302
- 3** **Utility of Procalcitonin to Predict Intensive Care Unit Admission and Identify Bacterial Illness in the ED Resuscitation of Pediatric Sepsis**  
*Ruth Abaya, Scott Weiss, Julie Fitzgerald, Fran Balamuth.*  
Abstract 303
- 4** **Does Emergency Care Differ for Patients with Spina Bifida Between Pediatric and General Emergency Departments?**  
*Erin R. McNamara, Tanya Logvinenko, Caleb P. Nelson.*  
Abstract 304
- 5** **The Effectiveness of Text Messaging Compared With Phone Communication in Contacting Adolescent Patients with Sexually Transmitted Infection Test Results from the Pediatric Emergency Department**  
*Melissa S. Cain, Sarah B. Wren, David L. Goldman, Hnin Khine.*  
Abstract 305
- 6** **Implementation of Intubation Checklists in the Pediatric Emergency Department**  
*Mariann Nocera, Linda L. Brown.*  
Abstract 306
- 7** **Validation of Risk Stratification Criteria to Identify Febrile Neonates at Low Risk of Serious Bacterial Infection**  
*Maya Capua, Jamie Shoag, Dina Golfeiz, Jeffrey Avner, Joni Rabiner.*  
Abstract 307
- 8** **Relationship of Preinjury Somatization to Prolonged Concussion Symptoms**  
*Jeremy M. Root, Noel S. Zuckerbraun, Bob Hickey.*  
Abstract 308
- 9** **Management of Pediatric Perforated Appendicitis: Comparing Outcomes Using Early Appendectomy vs Solely Medical Management**  
*William Bonadio, Arthur Ishakov, Onyinyechi Ukwuoma, Katie Rebillot, Christine Saracino.*  
Abstract 309
- 10** **Diagnostic Factors Associated with Constipation in Children Presenting to the Emergency Department with Abdominal Pain**  
*Hector Vazquez, Arpit Agarwal, Shravan Gunde, Antonios Likourezos, William A. Bonadio.*  
Abstract 310
- 11** WITHDRAWN
- 12** WITHDRAWN
- 13** **Trampoline Park and Home Trampoline Injuries: Comparison from a National Injury Database**  
*Kathryn E. Kasmire, Steven C. Rogers, Jesse J. Sturm.*  
Abstract 313
- 14** WITHDRAWN
- 15** **Analgesic Use in Children with Long Bone Fractures in a Pediatric Emergency Department**  
*Nisha Polavarapu, Shruti Banugaria, Sneha Patel, Noah Kondamudi.*  
Abstract 315
- 16** **Strengthening Transition of Care in the Pediatric Emergency Department Using I-PASS: A Quality Improvement Project**  
*Catherine Burdett, Sabina Singh, Danielle Casher, Terry Adirim.*  
Abstract 316
- 17** **Parents' Perspective on Performance of Invasive Procedures on Their Children: A Qualitative Evaluation**  
*Madeline L. McCarthy, Lindsey T. Chaudoin, Mark R. Mercurio, Elizabeth G.J. O'Brien, Sweta Bhargava, Sarah Y. Cohen, Marcie Gawel, Marc Auerbach, Gunjan Tiyyagura.*  
Abstract 317
- 18** **Awareness of Pediatric Emergency Medicine Physicians of Early Initiation of Non-Invasive Ventilation in Respiratory Failure**  
*Remon Assaad, Ritesh Korumilli, Gagan Gulati, Lily Q. Lew, Susana Rapaport, Rohit Pinto.*  
Abstract 318
- 19** **Extended Spectrum Beta-Lactamase Producing Urinary Tract Infections (ESBL UTIs) in Patients Presenting to a Pediatric Emergency Department: A Case Series**  
*Katherine Fullerton, Rebecca Leverson, Christian Machado, Jared Friedman, Nicole Streeks, Jessica Edison.*  
Abstract 319
- 20** **Factors Associated with Parent Satisfaction with Emergency Visits When the Patient Has Autism**  
*Sarah Kirsch, James Weaver, David L. Meryash.*  
Abstract 320
- 21** **Pediatric Emergency Medicine Curriculum in Armenia: Evaluating Knowledge Retention**  
*Claire Alexanian, Ling Cai, Hannah Cockrell, Aline Baghdassarian.*  
Abstract 321
- 22** **Prevalence of Cyberbullying in Patients Presenting to the Pediatric Emergency Department**  
*Karl Hellstrand, Steven Rogers, Jesse Sturm.*  
Abstract 322
- 23** **Obesity and Pain Management of Children with Long Bone Fractures in a Pediatric Emergency Department**  
*Nisha Polavarapu, Sergio Pereira, Shruti Banugaria, Noah Kondamudi.*  
Abstract 323
- 24** **A Scoping Review of the Literature on the Use of Epinephrine in the Management of Anaphylaxis: Epinephrine Auto Injector Vs Epinephrine from the Ampule**  
*Nnenna O. Chime, Victoria G. Riese, Julie Perretta, Daniel J. Scherzer, LeAnn McNamara, Elizabeth A. Hunt.*  
Abstract 324
- 25** **Characteristics and Behavioral Risk Factors of Firearm-Exposed Youth in an Urban Emergency Department**  
*Ruth Abaya, Tita Atte, Joanna Herres, Guy Diamond, Joel Fein.*  
Abstract 325
- 26** **Impact of Video-Based Quality Improvement on Cardiopulmonary Resuscitation Performance in a Pediatric Emergency Department**  
*Aaron Donoghue, Ting-Chang Hsieh, Mira Henien, Sage Myers.*  
Abstract 326
- 27** **Under Prescription of Epinephrine to Pediatric Patients with Anaphylaxis**  
*Sylvia Owusu-Ansah, Oluwakemi Badaki-Makun, Jennifer Anders, Robert Wood.*  
Abstract 327
- 28** **Do Abnormal Maternal Serum Biomarkers Predict Morbidities in Preterm Infants?**  
*Shivani Joshi, Nandita Mandhani, Ramiro Lizano Santamaria, Agnes Salvador.*  
Abstract 328
- 29** **Successful Treatment of Neonatal Jaundice in Rural Burundi With a Novel, Portable Phototherapy Device**  
*Donna J. Brezinski, Alyssa Pfister, Gary E. Gilbert.*  
Abstract 329
- 30** **Effects of Early Pain Experience on Response to Painful Stimuli in Infancy and Adulthood**  
*Carly I. Gomes, Gordon Barr.*  
Abstract 330

**31** **Effect of a Uniform Educational Feeding Program on Nurses' Comfort Levels Feeding**  
 Tammy B. Pham, Ruth L. Milanaik, Thomas Basile, Helen Papaioannou, Rithika Ramakrishnan, Tasnim Ahmed, Joanne Casatelli, Regina Spinazzola.  
 \_\_\_\_\_ Abstract 331

**32** **Mild Motor Impairment in Very Low Birth Weight Infants (VLBW) Is Related to Expressive But Not Receptive Language Impairment**  
 Rebecca DeMaria, Vivien Yap, Gail Ross, Jeffrey Perlman.  
 \_\_\_\_\_ Abstract 332

**33** **Evaluating the Developmental Assessment of Young Children (DAYC-2) in Premature Infants**  
 Michelle C. Coughlin, Barb B. Mettelman, Michelle M. Bode.  
 \_\_\_\_\_ Abstract 333

**34** **Hospital Readmission Rates for Children With Tracheostomy Placement Prior to One Year of Age**  
 Bridget E. DiPrisco, Albert Kim, Janet Lioy, Luv R. Javia, Sara B. DeMauro.  
 \_\_\_\_\_ Abstract 334

**35** **A Pilot Study of Factors Influencing Caregiver Engagement in Neonatal Follow Up**  
 Margaret L. Zager, Anketil Abreu, Oscar H. Purugganan, Annette P. Zygmunt, Christiana Farkouh-Karoleski.  
 \_\_\_\_\_ Abstract 335

**36** **Utilization of Outpatient Subspecialty Care By Infants with Tracheostomies**  
 Krysten North, Albert Kim, Janet Lioy, Sara Demauro, Luv Javia.  
 \_\_\_\_\_ Abstract 336

**37** **Comparison of PTSD Scores of NICU Parents Across Infant Gestational Age Categories**  
 Alexandra Hua, Tammy B. Pham, Regina Spinazzola, Diana Li, Chuck Ng, Ruth L. Milanaik.  
 \_\_\_\_\_ Abstract 337

**38** **Aggressive Optimized Nutrition Practice Improves Neurodevelopmental Outcome**  
 MaryBeth Mandich, Sanjay Mitra.  
 \_\_\_\_\_ Abstract 338

**39** **Addressing Challenges in Functional Connectivity Assessment in Children with Cerebral Palsy**  
 Juniper J. Lee-Park, Harshawardhan U. Deshpande, Jonathan M. Lisinski, Stephen M. LaConte, Sharon L. Ramey, Stephanie C. DeLuca.  
 \_\_\_\_\_ Abstract 339

**40** **Early Growth Patterns After Hypoxia-Ischemia and Therapeutic Hypothermia in Mice**  
 Johana Diaz, Suleiman Abiola, Nancy Kim, Raul Chavez, Frances Northington.  
 \_\_\_\_\_ Abstract 340

**41** **Prophylactic Phenobarbital (PB) Reduces Anti-Epileptic Drug (AED) Use in Infants Undergoing Therapeutic Hypothermia (TH) for Hypoxic-Ischemic Encephalopathy (HIE)**  
 Sushma Krishna, Jeffrey Perlman.  
 \_\_\_\_\_ Abstract 341

**42** **Abnormal Cerebroplacental Ratio Predicts Impaired Cerebral Autoregulation in Preterm Infants**  
 Sruthi Polavarapu, Garrett Fitzgerald, Stephen Contag, Laurence S. Magder, Suma B. Hoffman.  
 \_\_\_\_\_ Abstract 342

**43** **Incidence of Epilepsy and Predictors of Functional Outcome after Pediatric Cerebral Sinovenous Thrombosis**  
 Brianna Jones, Lauren A. Beslow, Rebecca N. Ichord, Laura Jastrzab, Lori L. Billingham.  
 \_\_\_\_\_ Abstract 343

**44** **A Clinical and Sonographic Study of Lenticulostriate Vasculopathy (LSV) in a Regional Neonatal Center**  
 Sanjeet Panda, Leewen Hsu, Jenna Mennella, Sema Gogcu.  
 \_\_\_\_\_ Abstract 344

**45** **Microglial Activation Following Hypoxia in the Newborn Piglet Brain**  
 Jessica May-Rabbach, Shadi Malaeb, John Grothusen, Jessica Button, Maria Delivoria-Papadopoulos.  
 \_\_\_\_\_ Abstract 345

**46** **aEEG Background Evolution Pattern in Newborns with Hypoxic Ischemic Encephalopathy (HIE) Receiving Therapeutic Hypothermia (TH)**  
 Elizabeth K. Sewell, Gilbert Vezina, Taeun Chang, Tammy Tsuchida, Kari Harris, Michelande Ridore, Nadia Kadri, An N. Massaro.  
 \_\_\_\_\_ Abstract 346

**47** **Long Term Effect of Src Kinase on Mitochondrial Membrane Integrity Following Hypoxia in the Newborn Piglet Brain**  
 Panagiotis Kratimenos, Amit Jain, Anja Mowes, Ioannis Koutroulis, Shadi Malaeb, Maria Delivoria-Papadopoulos.  
 \_\_\_\_\_ Abstract 347

**48** **Autonomic Dysfunction and Physiologic Response to NICU Care Events in Newborns With Hypoxic Ischemic Encephalopathy (HIE)**  
 Heather Eisenson, R.B. Govindan, Tareq Al-Shargabi, Marina Metzler, Nickie Andescavage, Taeun Chang, Adre du Plessis, An N. Massaro.  
 \_\_\_\_\_ Abstract 348

**49** **Autoregulation in Small for Gestational Age Infants During Rewarming After 72h of Therapeutic Hypothermia for Hypoxic-Ischemic Encephalopathy**  
 Matthew C. O'Connor, Frances J. Northington, Jamie Perin, Charla Parkinson, Michael Reyes, Jillian S. Armstrong, Jennifer K. Lee, Raul Chavez-Valdez.  
 \_\_\_\_\_ Abstract 349

**50** **Photoplethysmographic Parameters Correlate with Echocardiographic Indices of Hemodynamically Significant Patent Ductus Arteriosus**  
 Cynthia R. Amirtharaj, Gideon Gradwohl, Meir Nitzan, Dorota Gruber, Andrew Blaufox, Elena Kwon, Robert Koppel.  
 \_\_\_\_\_ Abstract 350

**51** **Oximeter Alarm Safety and Oxygen Saturation (SpO2) Targets in Vermont Oxford Network (VON) NICUs**  
 Ji Hagadorn, D.W. Sink, M.E. Buus-Frank, E.M. Edwards, K.A. Morrow, B. Schmidt, J.D. Horbar, K.R. Ferrelli, R.F. Soll.  
 \_\_\_\_\_ Abstract 351

**52** **Small-For-Gestational-Age (SGA) Prevalence in the U.S. Is Increasing Among Infants 33 to 38 Weeks Gestation**  
 Laura H. Rubinos, Molly Passarella, Scott A. Lorch.  
 \_\_\_\_\_ Abstract 352

**53** **Residential Segregation Is a Risk Factor for Intraventricular Hemorrhage in Pre-Term Infants**  
 Daria C. Murosko, Scott A. Lorch.  
 \_\_\_\_\_ Abstract 353

**54** **Respiratory Severity Score at Birth Predicts Neonatal-Associated Morbidities in Infants < 1,250 grams**  
 David Aboudi, Heather L. Brumberg, Shetal I. Shah.  
 \_\_\_\_\_ Abstract 354

**55** **Limited Health Literacy in Parents of Very Premature Infants**  
 Elizabeth Enlow, Megan M. Gray, Sara Wallace-Keeshen, Laura Rubinos, Soraya Abbasi, Scott A. Lorch.  
 \_\_\_\_\_ Abstract 355

**56** **Association Between Early Hypophosphatemia and Respiratory Morbidities in Very Preterm Infants**  
 Rani K. Thekumparampil, You Chen, Xianhong Xie, Mimi Kim, Mamta Fuloria.  
 \_\_\_\_\_ Abstract 356

**57** **Oral Dextrose Gel Reduces Need for Intravenous Fluids in Neonatal Hypoglycemia**  
 Munmun Rawat, Praveen Chandrasekharan, Stephen Turkovich, Nancy Barclay, Katherine Perry, Eileen Schroeder, Lisa Testa, Satyan Lakshminrusimha.  
 \_\_\_\_\_ Abstract 357



**58** **Effect of Storage on Immune-Modulators in Preterm Human Milk**  
*A. Nayak, A. Vinci, M. Botros, M. Bustoros, E. Gurzenda, X. Lin, N. Hanna.*  
 Abstract 358

**59** **Nutritional Regulation of Fibroblast Growth Factor 19 Secretion in Neonates**  
*Naureen Memon, Barry I. Weinberger, Thomas Hegyi, Mary O. Carayannopoulos, Lauren M. Aleksunes, Grace L. Guo.*  
 Abstract 359

**60** **Impact of Feeding Type on the Clinical Symptoms of Neonatal Abstinence Syndrome**  
*Garima Sarda, Jennifer Friderici, Lora Warren, Jeffrey Shenberger, Rachana Singh.*  
 Abstract 360

**61** **Are Insertion Site and Tip Location of Peripherally Inserted Central Catheters (PICCs) Associated with Phlebitis in Newborns?**  
*Garima Sarda, Nicole Parentela, Paul Visintainer, Gary Rockwell, Stanley Polansky, Bruno Zeneski, Alexander Knee, Robert Rothstein.*  
 Abstract 361

**62** **The Effect of Intravenous Acetaminophen on Opioid Use in Preterm Infants**  
*Lyndsey R. Garbi, Shetal Shah.*  
 Abstract 362

**63** **Factors Associated With End of Life Discussions in Infants With Severe BPD**  
*Kesi Chen, Erik Jensen, Huayan Zhang, Kathleen Nilan, Haresh Kirpalani.*  
 Abstract 363

**64** **Relationship Between Parent Visitation, Stress, and Growth Among Hospitalized Preterm Infants**  
*Alexandra F. Cours, Susan E. Filomena, Julie Liu, Annemarie Stroustrup.*  
 Abstract 364

**65** **WITHDRAWN**

**66** **Polymorphisms of Extracellular Matrix Remodeling Genes Contribute to Bronchopulmonary Dysplasia in Extremely Low Birth Weight Infants**  
*Umesh Paudel, Asma Amin, Lance A. Parton.*  
 Abstract 366

**67** **Continuous Home Oximetry Data Contributes to Outpatient Oxygen Management in Preterm Infants**  
*Elizabeth M. Moran, Hannah B. Suchy, Kayley M. Gaukler, Leah M. Frain, Lawrence M. Rhein.*  
 Abstract 367

**68** **Epinephrine (EPI) in Neonatal Resuscitation in a Term Lamb Model of Perinatal Asphyxial Arrest**  
*Payam Vali, Munmun Rawat, Praveen Chandrasekharan, Sylvia Gugino, Carmon Koenigsnecht, Justin Helman, William J. Jusko, Myra H. Wyckoff, Satyan Lakshminrusimha.*  
 Abstract 368

**69** **Proper Placement of the Umbilical Venous Catheter Tip in Neonates < 1500 grams: Echocardiographic Versus Radiologic Guidance**  
*Bianca Cecilia F. Karber, James C. Nielsen, Dvorah Balsam, Catherine R. Messina, Dennis Davidson.*  
 Abstract 369

**70** **Automated Artifact Detection in Large Physiological Datasets**  
*J.R. Isler, P.G. Grieve, M. Weindler, D.A. Bateman, R. Sahni.*  
 Abstract 370

**71** **Trends in Medical Therapy for Gastroesophageal Reflux in VLBW Infants: Impact on Late Onset Sepsis and Necrotizing Enterocolitis**  
*Swati Murthy, Alison Cook, Kevin Dysart, Sara B. DeMauro, Elizabeth Foglia, Erik Jensen, Jay S. Greenspan, Zubair H. Aghai.*  
 Abstract 371

**72** **Neonatal Outcomes of Very-Low-Birth-Weight Infants Born to Mothers with Hypertensive Disorders**  
*Dustin D. Flannery, Kevin Dysart, Sara DeMauro, Erik Jensen, Elizabeth Foglia, Alison Cook, Jay Greenspan, Zubair H. Aghai.*  
 Abstract 372

**73** **Implicit Physician Biases in Periviability Counseling**  
*Natasha Shapiro, Elena Wachtel, Sean M. Bailey, Michael D.M. Espiritu.*  
 Abstract 373

**74** **Down-Regulation of the Placental BCRP Drug Transporter During Chronic Hypoxia**  
*Elizabeth Yen, Xia Wen, Lissa Francois, Ludwick Gorczyca, Nicholas Illsley, Stacy Zamudio, Lauren Aleksunes.*  
 Abstract 374

**75** **A Randomized Study of Delayed Cord Clamping (DCC) in Preterm Neonates; Preliminary Observations**  
*Morgan Spaight, Scarlet McKinsey, Jeffrey Perlman.*  
 Abstract 375

**76** **A Clinically Relevant Spanish Decision-Aid for Extremely Premature Birth**  
*M.J. Drago, U. Guillen, M. Schiaratura, J. Batza, A.K. Mowes, A. Zygmunt, C. Farkouh, J. Lorenz, D. Munson, H. Kirpalani.*  
 Abstract 376

**77** **Preferred Parental Decision-Making Role in Neonatal Intensive Care**  
*Elliott M. Weiss, Frances K. Barg, Emily Black, Steven Joffe.*  
 Abstract 377

**78** **Reproductive Health Education Received By Young Women With Cerebral Palsy**  
*Susan H. Gray, Molly Wylie, Laurie Glader.*  
 Abstract 378

**79** **Training the Leader Improves Global Performance of a Pediatric Rapid Response Team**  
*Amanda B. Levin, Alex Cartron, Anne Watson, Ashley Siems.*  
 Abstract 379

**80** **Effect of Hypothermia on Brain Cell Membrane Function in Normoxic Newborn Piglets**  
*Jherna Balany, Shadi Malaeb, Jalea Moses, John Grothusen, Samia Aleem, Maria Delivoria-Papadopoulos.*  
 Abstract 380

**81** **The Development of an Interdisciplinary Pediatric Critical Care Medicine (PCCM) Simulation Program**  
*Joy Howell, Monique Zayas, Doreen Hsing, Danielle Massaro, Erin Clayton, Kevin Ching, Cori Green.*  
 Abstract 381

**82** **QT Interval Prolongation in the Pediatric Oncologic Population on Methadone**  
*Jenna Piccininni, James S. Killinger, Hoda T. Hammad, Linda Gerber, Jeffrey D. Dayton.*  
 Abstract 382

**83** **Procedural Sedation with Remifentanyl, Dexmedetomidine and Propofol**  
*Mohammad A. Quraishi, Ravinder Devgun, Omar Al-Ibrahim, Ramiro Mireles, Christopher Heard.*  
 Abstract 383

**84** **Provider Attitudes Towards Rapid Response Teams**  
*Ashley L. Siems, Alexander Cartron, Anne Watson, Amanda Levin.*  
 Abstract 384

**Sunday, March 13**  
**Poster Session IV:**  
**Child Abuse/Developmental-**  
**Behavioral Pediatrics/**  
**Endocrinology/Medical**  
**Education/General Pediatrics/**  
**Neonatology**  
 7:30am-9:00am — Ormandy

- 1** **Characteristics That Distinguish Abusive from Nonabusive Causes of Sudden Unexpected Infant Deaths**  
 Kirsten A. Bechtel, Meagan Derbyshire, James Gill. — Abstract 385
- 2** **Ethanol Intoxication in Infants: A Case Series and Systematic Review**  
 Dianne Lee, Ilana Harwayne-Gidansky. — Abstract 386
- 3** **Quality Improvement in Child Sexual Abuse Evaluation: Review of Photos and Documentation as a MOC Part 4 Project**  
 Lori D. Frasier. — Abstract 387
- 4** **Psychiatric Correlates of Bullying Victimization in Children with Developmental Disabilities**  
 Bridget Kiely, Sujit Vettam, Andrew Adesman. — Abstract 388
- 5** **Parental Beliefs about the Etiology of Developmental Disabilities**  
 Bridget Kiely, Sujit Vettam, Andrew Adesman. — Abstract 389
- 6** **Age of Diagnosis of Autism Spectrum Disorder in an Ethnically Diverse Population Before and After the 2007 AAP Recommendation for Universal Screening**  
 Maria Valicenti-McDermott, Rosa Seijo, Lisa Shulman. — Abstract 390
- 7** **Therapy and Medication Use in Young Children with Autism: A Secondary Data Analysis from the Autism Speaks-Autism Treatment Network**  
 Daniela M. Ziskind, Amanda E. Bennett, Abbas F. Jawad, Nathan J. Blum. — Abstract 391
- 8** **Behavioral/Developmental Access to Reduce Time to Diagnosis of Autism Spectrum Disorder**  
 Meghan Harrison, Persephone Jones, Iman Sharif, Matthew D. Di Guglielmo. — Abstract 392
- 9** **General Pediatrician-Staffed Behavioral/Developmental Access Clinic Decreases Time to Evaluation of Early Childhood Developmental Disorders**  
 Meghan Harrison, Persephone Jones, Iman Sharif, Matthew D. Di Guglielmo. — Abstract 393

- 10** **Timing of Adverse Experiences and ADHD at Age 9**  
 Manuel Jimenez, Roy Wade, Ofira Schwartz-Soicher, Yong Lin, Nancy Reichman. — Abstract 394
- 11** **Identifying Developmental-Behavioral Problems Among Young Children**  
 Stacey L. Bevan, Radley C. Sheldrick, Ellen C. Perrin. — Abstract 395
- 12** **Analysis of Therapy and Psychostimulant Use in Children 5 Years Old with Symptoms of ADHD in a US Urban Setting**  
 Elizabeth T. Ninan, Ayotunde Adeyeye, Ayoade O. Adeniyi, Stefan Hagmann, Richard Neugebauer, Jay Selman. — Abstract 396
- 13** **WITHDRAWN**
- 14** **Clinical Correlates of Wandering in Children with Autism Spectrum Disorders**  
 Bridget Kiely, Talia Migdal, Sujit Vettam, Andrew Adesman. — Abstract 398
- 15** **Prevalence of Genetic Testing among U.S. Children with Developmental Disabilities**  
 Bridget Kiely, Sujit Vettam, Andrew Adesman. — Abstract 399
- 16** **Clinical Predictors of Neurocognitive Outcomes in Children Following Perinatal Arterial Ischemic Stroke**  
 Danielle Bosenbark, Lauren Krivitzky, Rebecca N. Ichord, Laura Jastrzab, Lori L. Billingham. — Abstract 400
- 17** **Community-Based Parental Dialogic Reading Intervention to Improve Child's Emergent Literacy**  
 Sandhya S. Iyengar, Stephen De Waal Malefyt. — Abstract 401
- 18** **Increased Risk of Aggressive Behavior among Victims of Multiple Forms of Bullying**  
 Alexandra Hua, Tammy B. Pham, Anne Shattuck, Andrew Adesman. — Abstract 402
- 19** **Regulation of a Novel Acyl CoA Dehydrogenase: ACAD10**  
 Emir Tas, Zhenwei Gong, Jerry Vockley, Radhika Muzumdar. — Abstract 403
- 20** **WITHDRAWN**
- 21** **The Effect of Maternal Magnesium Deficiency on Fetal Pancreatic Development**  
 Allison Bauman, Xiangying Xue, Marlina McGill, Prodyot Chatterjee, Gopal Kumar, Patricia Vuguin, Phyllis Speiser, Christine Metz. — Abstract 405

- 22** **Adrenal Suppression Occurs in Children Treated with Inhaled Steroids Taken Orally for Eosinophilic Esophagitis Treatment**  
 Mahmuda M. Ahmed, Anastasios Angelides, Meghana Gudala, Holley Allen. — Abstract 406
- 23** **Effect of One Year of Growth Hormone Therapy on A1C and BMI for GHD and ISS patients**  
 M. Goldis, L. Waldman, K. Williams, C. Romero, E. Wallach, E. Burman, V. Cabreza, M. Regelman, R. Rapaport. — Abstract 407
- 24** **Oxcarbazepine Is an Underrecognized Cause of Symptomatic Hyponatremia in Pediatric Patients Without Thirst: Two Case Reports**  
 Jessica Kremen, Joseph Majzoub. — Abstract 408
- 25** **Blood Glucose Levels During the First 24 Hours of At-Risk Infants: A Review of the Magee-Womens Hospital Infant Blood Glucose Policy**  
 Karla F. Leavens, Abeer Azzuqa. — Abstract 409
- 26** **The Association of Elevated Alanine Transaminases With Cardiovascular and Metabolic Markers in Obese Children and Adolescents of the South Bronx**  
 Swathi Sethuram, Hoda Karbalivand, Swati Dave-Sharma. — Abstract 410
- 27** **Effects of Bariatric Surgery on Metabolic Risk Factors in Adolescents with Polycystic Ovarian Syndrome (PCOS)**  
 Shrinkhala Srivastava, Paola Palma Sisto, Trudy Lerer. — Abstract 411
- 28** **High Prevalence of Metabolic Syndrome, Increased AI (Atherogenic Index) and Increased IR (Insulin Resistance) in Obese Children and Adolescents of South Bronx**  
 Hoda Karbalivand, Swathi Sethuram, Swati Dave-Sharma. — Abstract 412
- 29** **Characterization at Diagnosis and Follow Up of Adolescent Patients with Polycystic Ovarian Syndrome (PCOS)**  
 Shrinkhala Srivastava, Paola Palma Sisto, Christine Trapp, Trudy Lerer. — Abstract 413
- 30** **Foreign Medical Aid to Solomon Islands – Developing a Local Professional Education Curriculum Emphasizing Sustainability**  
 Daniel T. Yu, Karen A. Schneider, Jennifer F. Anders, Martha W. Stevens. — Abstract 414
- 31** **Assessing Public Perceptions of Recent Epidemics in Children**  
 William Chan, Henry Guo, Christine Mulvey, Sharon R. Smith. — Abstract 415
- 32** **Community Pediatrics and Advocacy Training in New York State: Where We Are and Where We Want to Be**  
 Leora Mogilner, Wee Chua, Dodi Meyer, Anne Armstrong-Coben, Cappy Collins, Laurie Gordon. — Abstract 416

**33 Sex Maturity Rating- A National Survey of the Attitude, Knowledge and Practice of Pediatric Trainees**  
*Aditi Khokhar, Yagnaram Ravichandran, Dimitre G. Stefanov, Sheila Perez-Colon.*  
 Abstract 417

**34 An Evaluation of Fellow Clinic Work Activities using Work Sampling Analysis in an Urban Academic Adolescent Medicine Outpatient Center**  
*Sharyn Malcolm, Jean Someshwar, Robyn Miller, Brooke Bokor, Joyce Campbell.*  
 Abstract 418

**35 Developing a Peer Mentoring Program for Pediatric Residents**  
*Miriam T. Stewart, Nicole Hames.* Abstract 419

**36 Resident Perspectives of Virtual Simulation in an Online Complex Care Curriculum**  
*Keri Toner, Dewesh Agrawal, Priti Bhansali, Neha Shah.* Abstract 420

**37 A Digitally Innovative Bioethics Curriculum for Neonatal-Perinatal Medicine Fellows: Results After Year 1 of a Pilot Study**  
*Gina M. Geis, Christy Cummings.* Abstract 421

**38 Efficacy of Pediatric Residents Training El Salvador Community Healthcare Workers in Basic Pediatric Life Support and Neonatal Resuscitation**  
*Ngoc Nguyen, Karishma Choksey, Cecilia Monteilh, Paul Lee.* Abstract 422

**39 A Needs Assessment Study of Point-of-Care Ultrasound (POCUS) Education in Pediatric Residency: Demand Without Supply**  
*Sathyaseelan Subramaniam, Valeriy Chorny, Michael Keenaghan, Ramon Gist, Ninfa Mehta, Jennifer Chao.* Abstract 423

**40 Emergent Neonatal Pericardiocentesis Simulation**  
*J. Lauren Ruoss, Elizabeth Doherty.* Abstract 424

**41 Survey Assessment of Knowledge, Attitudes and Practices of US Pediatric Residents Regarding Newborn Screening**  
*Shipra Bansal, Kannan Kasturi, Vivian L. Chin.* Abstract 425

**42 Characterizing Medical Student Self-Identified Goals for the Pediatric Clerkship**  
*Anson Elisabeth, Robertson Kathryn, Kind Terry.* Abstract 426

**43 Does the ACGME Survey Tell Us What We Need to Know: Using a Graduate Survey to Find Out**  
*Cynthia Katz, Sarah Rawstron, Sonia Desikan, Kenneth Bromberg.* Abstract 427

**44 Evaluation of a Novel Role Play Curriculum to Teach Patient and Family Centered Communication Skills to Medical Students**  
*Julia F. Aquino.* Abstract 428

**45 Why Does Infant Sleep Position Change Over Time and Who Influences Mothers' Decisions?**  
*Anna H. Abrams, Anita Mathews, Rosalind P. Oden, Brandi Joyner, Rachel Y. Moon.* Abstract 429

**46 Use of Echocardiography for the Evaluation of Hypertension**  
*Megan Griffiths, Seth Lapuk, Cynthia D'Alessandri-Silva.* Abstract 430

**47 Weight Loss at Discharge of Neonates Born to Mothers with Gestational Diabetes Mellitus**  
*Yisrael T. Lipener, Sreevidya Sreekantha, Ritesh Korumilli, Lily Q. Lew, Judith Eng, Lourdes Cohen, Susana Rapaport.* Abstract 431

**48 Evaluating Home and Office Based Multidisciplinary Programs for Children With Special Health Care Needs**  
*Maureen Braun, Elaine Lin, Nicole Tennermann, Kanasha Seales, Sanite Theophile, Alissa Pierre-Charles, Joseph Truglio.* Abstract 432

**49 Do Serum Bicarbonate Values Correlate with Length of Hospitalization in Pediatric Patients Admitted with Dehydration?**  
*Boran Li, Nancy Palumbo, Stephen Barone.* Abstract 433

**50 Predictors of Pediatric Intensive Care Unit (PICU) Admission in Children with Acute Bronchiolitis**  
*Shiori Nariai, Paulo Pina, Courtney Ann McNamara, David H. Rubin, Alyssa H. Silver.* Abstract 434

**51 Morbidity in Children With Genetic Disorders Hospitalized With Viral Respiratory Illnesses**  
*Alexander S. Whitaker, Carol Greene, Alexander G. Agthe.* Abstract 435

**52 The Effects of a Pediatric Resident Educational Program on Long-Acting Reversible Contraceptive Knowledge and Counseling**  
*Elizabeth Silberholz, Courtney M. Dominic, Danielle Erkoboni, James Hall, Ambika J. Lall, Christine E. Nazarian, Jennifer L. Robbins, Elizabeth W. Tindal, Courtney E. Wein, Bruce A. Bernstein, Lee M. Pachter, Daniel R. Taylor.* Abstract 436

**53 A Multi-Faceted, Interdisciplinary Approach Can Improve HPV Vaccination Rates in an Urban Pediatric Practice**  
*Nicola Brodie, Bruce Bernstein, David Cooperberg, Mario Cruz, Katie McPeak.* Abstract 437

**54 Identifying Asthma Patients Who Require a Controller Medicine: Comparison of the National Heart, Lung, and Blood Institute (NHBLI) Guidelines With the Healthcare Effectiveness Data and Information Set (HEDIS) Criteria in One Urban Practice**  
*Ashleigh J. Hall, Amer Kechli, Beth Moughan, Carol Smolij, Stephen Aronoff.* Abstract 438

**55 Improving Vision Screening Rates of 3-Year-Olds in a Primary Care Clinic**  
*Whitney J. Washburn, Patricia Garcia, Catherine Wiley.* Abstract 439

**56 Caregivers Perceptions of Bright Futures Parenting and Discipline Advice and Its Application in a Text Messaging Program**  
*Stacy B. Ellen, Falgumi Patel, Bruce A. Bernstein, Lee M. Pachter.* Abstract 440

**57 Utilization of Patient Navigators in an Urban Academic Pediatric Primary Care Practice**  
*Eli Sprecher, Jenny Chan, Kathleen Conroy, Joanne Cox.* Abstract 441

**58 Shared Care in Pediatrics: Optimizing Co-Management by Primary Care and Subspecialist Physicians**  
*Christine M. Arsnow, Scott Shipman.* Abstract 442

**59 Knowledge and Attitudes about Pediatric Obstructive Sleep Apnea among Caregivers**  
*Jarreau Spencer S. Chen, Daniel Erichsen, David H. Rubin, Paulo R. Pina.* Abstract 443

**60 BMI an independent risk factor for increased length of stay in Acute Asthma**  
*Puneet Arora, Pravesh Sanghwan, Haifa Jaedi, Yash Shah and Marina Pekar.* Abstract 444

**61 Implementation of a Screening program for Detection of Critical Congenital Heart Disease (CCHD) in Newborns in a Large Connecticut Health System**  
*Rachel Klausner, Eugene D. Shapiro, Robert W. Elder, Jaspreet Loyal.* Abstract 445

**62 Physician Discussion of AAP Car Seat Safety Guidelines: Unexpected Racial Disparities**  
*Chelsey Clark, Tammy B. Pham, Tasnim Ahmed, Chuck Ng, Ruth L. Milanaik.* Abstract 446

**63 Factors Affecting Weight Loss in Healthy Term Newborns on Mixed Feeds**  
*Sreevidya Sreekantha, Jennifer Nguyen, Alexandra Spilsbury, Ritesh Korumilli, Lily Q. Lew, Dakshayani Guttal, Susana Rapaport, Lourdes Cohen.* Abstract 447



Sunday, March 13

**64** A Physics/Physiology-Based Model for Neonatal Core Thermoregulation in a Radiant Warmer  
*Yogen Utturkar, Wolfgang Stautner.*  
Abstract 448

**65** Association of Single Nucleotide Polymorphisms of Hypoxia Inducible Factor 1 and Retinopathy of Prematurity  
*Alexander Feldman, Umesh Paudel, Asma Amin, Lance A. Parton.*  
Abstract 449

**66** Outcomes of Preterm Neonates Treated with Vasopressin for Refractory Pulmonary Hypertension: Case Series  
*Adel A. Mohamed, Deepak Louis, Aimann Surak, Dany Weisz, Patrick J. McNamara, Amish Jain.*  
Abstract 450

**67** Premature Small for Gestational Age (SGA) Infants: What Should Their Blood Pressure Be?  
*Samantha E. Dizon, Suma B. Hoffman.*  
Abstract 451

**68** Increased Clotting Events in Infants with Congenital Diaphragmatic Hernia Treated with Extracorporeal Membrane Oxygenation  
*El Noh, Betty Chui, Henry Rozycki, Russell Moores.*  
Abstract 452

**69** "Liquid Gold", a Breastfeeding Bundle, Increases Lactation Success in Mothers of Extremely Low Birth Weight Infants  
*A. Maxwell, D. Aboudi, H. Brumberg, K. Olivo, T. Roeder, R. Valdes-Greene, B. Parvez.*  
Abstract 453

**70** Increasing Human Breastmilk Feeding Rates at Discharge in Very Low Birth Weight Infants  
*Jessica A. Zina, Lora Warren, Jennie Fleming, Jennifer Marion, Rachana Singh.*  
Abstract 454

**71** Bacterial Stability with Freezer Storage of Human Milk  
*Shachee P. Pandya, Champa Codipilly, Harshit Doshi, Richard J. Schanler.*  
Abstract 455

**72** The Role of the Type of Full Feeding on the Growth Pattern of Very Preterm Born Infants  
*Shannon L. Eccles, Rajeev Mehta, Anna Petrova.*  
Abstract 456

**73** Outcome of Premature Infants on Liquid Human Milk Fortifier  
*David Box, Bethany Jung, Shakuntala Chandra.*  
Abstract 457

**74** Clinical and Nutritional Outcomes of Two Liquid Human Milk Fortifiers Used in Preterm Infants  
*S. Lainwala, N. Kosyakova, A.M. Spizzoucco, V. Herson, E. Brownell.*  
Abstract 458

**75** Readmissions (readm) for Hyperbilirubinemia (BR) Following Phototherapy (PT) in the Nursery. Know Your ABOs  
*Alexandra Vinci, Ceena Philipose, Warren Rosenfeld.*  
Abstract 459

**76** Medication Administration Practices in the NICU Affect Osmolality of Human Milk  
*A. Bamanikar, P. Giri, T. Roeder, R. Valdes-Greene, E. LaGamma, B. Parvez.*  
Abstract 460

**77** Do Cardiorespiratory Events Trigger Gastroesophageal Reflux or Vice Versa?  
*Swati Murthy, Zubair H. Aghai.*  
Abstract 461

**78** Transcutaneous Bilirubin (TCB) Nomogram for Newborns of East Asian (EA) Ethnicity  
*Pinchi Srinivasan, Michael Brandler, Eli Koenig, Elise Lavery, Piyush Jain, Joseph Abularrage.*  
Abstract 462

**79** Inter and Intra Device Variability in Irradiance Among Phototherapy Devices  
*Sourabh Verma, Pradeep V. Mally, Sarah L. Zhang, Katherine E. Carome, Martha C. Caprio, Sean M. Bailey.*  
Abstract 463

**80** Identification of Hemolysis in the Well-Baby Nursery  
*David L. Schutzman.*  
Abstract 464

**81** Reducing Painful Procedures in Late Preterm Infants By Using Umbilical Cord Blood as Alternative to Admission Complete Blood Count  
*Neera Prakash, Echezona Maduekwe.*  
Abstract 465

**82** Bilirubin Inhibition of L1 Cell Adhesion Molecule (L1) Activation of ERK1/2  
*Eric M. Ly, Gail Cameron, Ningfeng Tang, Min He, Cynthia F. Bearer.*  
Abstract 466

**83** Electrical Grounding Is Associated With Decreased Sympathetic Activity in Preterm Neonates  
*Richard A. Jack, Kim K. Doheny, Charles Palmer.*  
Abstract 467

Sunday, March 13

Plenary Session III  
Presentation of the Young Investigator Awards

9:00am – 9:15am — *Symphony Ballroom*

THE GREAT DEBATE

9:15am – 10:15am — *Symphony Ballroom*  
*Dr. Margaret Moon and Dr. Steven Goldstein*  
*Is It Ethical For Pediatricians To Refuse To Create Initial Patient Relationships With Children Whose Parents Refuse Vaccinations*

Sunday, March 13

Platform Session

Cardiology

10:30am-12:30pm — *Maestro A*  
Moderator: *Mohamed Ahmed*

10:30am

Extracellular Superoxide Dismutase (ECSOD) Over-Expression Reduces Cardiac Dysfunction Induced by Hypoxia in a Pulmonary Hypertension Murine Model  
*Ayan Rajgarhia, Hardik Patel, Nahla Zaghoul, Kameshwar Ayyasola, J. Martin Lopez Da Re, Mohamed Ahmed.*  
Abstract 468

10:45am

Investigating Genetic Pathways in Phenotype Specific Congenital Heart Disease Pathogenesis  
*Jonathan J. Edwards, Andrew D. Rouillard, Nicolas F. Fernandez, Sunita S. Shankaran, Martin Tristan-Firouzi, H. Joseph Yost, Avi Ma'ayan, Bruce D. Gelb, PCGC Investigators.*  
Abstract 469

11:00am

The Impact of Targeted Neonatal Echocardiography (TnECHO) on Practice in Neonatal Intensive Care: A Multicentre Prospective Observational Study  
*Regan E. Giesinger, Carmel Moore, Louis Deepak, Ann Jefferies, Prakesh Shah, Afif El-Khuffash, Patrick J. McNamara, Amish Jain.*  
Abstract 470

11:15am

Does NIRS Regional Saturation (rSO<sub>2</sub>) Correlate with Tissue Oxygen Delivery? – A Validation Study  
*Carmon Koenigskecht, Munmun Rawat, Sylvia Gugino, Bobby Matthew, Praveen Chandrasekharan, Satyan Lakshminrusimha.*  
Abstract 471

11:30am

Effects of Indomethacin Dosing Strategy on Closure of Patent Ductus Arteriosus in Very Low Birth Weight Neonates  
*Pooja Rathi, Catherine Messina, Jonathan P. Mintzer.*  
Abstract 472

11:45am

Expanded Screening for Critical Congenital Heart Disease With Pulse Oximetry and Four-Extremity Blood Pressure  
*Nithi Fernandes, Jessica B. Harrell, Satyanarayana Lakshminrusimha.*  
Abstract 473

12:00pm

Change in Occipital-Frontal Head Circumference Percentile in Single Ventricle Patients Undergoing Glenn Anastomosis  
*Meaghan Doherty, Jacqueline Kreutzer, Daniel G. Winger, Ryan Callahan, Lizabeth Lanford.*  
Abstract 474



12:15pm

**A Pilot Study of Recurrent Cardiology Evaluation for Innocent Heart Murmur: Referral Source and Test Utilization**

*Nupur N. Dalal, Othman Aljohani, Tyler Bradley-Hewitt, Ashraf Harahsheh.*

Abstract 475

**Developmental/Behavioral Pediatrics**

10:30am-12:30pm — *Rhapsody*

*Moderators: Jamie Pinto, Rafia Baloch*

10:30am

**Improving ADHD Rating Scale Completion With eQuestionnaires That Link to a Patient's Electronic Record**

*Jeremy Michel, Alex Fiks, Jeff Miller, Nathan Blum, Stephanie Mayne, Andrew Suh, James Guevara, Tom Power, Robert Grundmeier.*

Abstract 476

10:45am

**PTSD Scores Among Mothers and Fathers of NICU Graduates Aged 1 to 36 Months**

*Alexandra Hua, Tammy B. Pham, Regina Spinazzola, Jill Sonnenklar, Diana Li, Helen Papaioannou, Ruth L. Milanaik.*

Abstract 477

11:00am

**Screening Implications of the Broader ASD Phenotype in Young Children**

*Brenda Rojas, Daryl W. Garfinkel, Bibiana Restrepo, Radley C. Sheldrick, Ellen C. Perrin, Susan E. Marakovitz.*

Abstract 478

11:15am

**Formula Feeding Is Associated with Higher Risk for ADHD in Preschoolers**

*Derek Soled, Lisa Rosen, Andrew Adesman.*

Abstract 479

11:30am

**Prematurity and Early Childhood Fracture Risk**

*Kari Wagner, Scott Wagner, Apryl Susi, Greg Gorman, Elizabeth Hisle-Gorman.*

Abstract 480

11:45am

**Factors Associated with Autism Spectrum Disorder Diagnosis in Children with Attention-Deficit/Hyperactivity Disorder**

*Amir Miodovnik, Nicole T. Baumer.*

Abstract 481

12:00pm

**Wandering Prevention in Youth with Autism Spectrum Disorders**

*Bridget Kiely, Talia Migdal, Sujit Vettam, Andrew Adesman.*

Abstract 482

12:15pm

**Maternal Self-Efficacy and Maternal Depressive Symptoms on Shared Book Reading**

*Aram Kim, Alan Mendelsohn, Suzy Tomopoulos, Casilda Suarez Hesketh, Shonna Yin, Benard Dreyer, Adriana Weisleder, Karen Hopkins, Hugh Bases, Victoria Chen.*

Abstract 483

**Emergency Medicine III**

10:30am-12:30pm — *Concerto AB*

*Moderator: Sharon Smith & Kathryn Kasmire*

10:30am

**Language Barrier Affect on Providing Timely Pain Management for Long Bone Fractures in a Pediatric Emergency Department**

*Michelle Gaba, Hector Vazquez, Jess Thompson, Francis See, Christine Rizkalla.*

Abstract 484

10:45am

**Clinical Burden of Psychiatric Visits on the Pediatric Emergency Department**

*Ariella Nadler, Deena Avner, Hnin Khine, Jeffrey R. Avner, Daniel M. Fein.*

Abstract 485

11:00am

**Pre-Hospital Pediatric Care in a Large Urban American City: The FDNY Experience 2006-2012**

*Matthew I. Harris, Robert Silverman, David Ben-Eli, John Freese, James Braun, Glenn Asaeda.*

Abstract 486

11:15am

**Examining the Pediatric Emergency Department's Role in Improving Access to Reproductive Care**

*Monika Goyal, Michelle Solomon, Gia Badolato, Lauren Chernick.*

Abstract 487

11:30am

**Serious Bacterial Infections in Chinese Children: What Are the Pathogens?**

*Matthew Kline, Xia Wang, Lei Chen.*

Abstract 488

11:45am

**Risk Factors for Sexually Transmitted Infection in Patients Seeking Emergency Psychiatric Evaluation in the Pediatric Emergency Department**

*Caitlin Proper, Sarah B. Wren, David L. Goldman, Elizabeth Alderman, Hnin Khine.*

Abstract 489

12:00pm

**Are "Traumatic Taps" Truly Traumatic?**

*Matthew P. Kusulas, Eric Eutsler,*

*Andrew D. DePiero.*

Abstract 490

12:15pm

**Management of Skin and Soft Tissue Infections Before and After Clinical Pathway Implementation**

*Courtney E. Nelson, Fran Balamuth, Stephanie Ng, Khoon-Yen Tay, Lisa McAndrew, Aaron Chen.*

Abstract 491

**Endocrinology**

10:30am-12:30pm — *Maestro B*

*Moderator: Eda Cengiz*

10:30am

**Adrenal Insufficiency Testing in X-Linked Adrenoleukodystrophy Identified by Newborn Screen**

*E. Burtman, M. Wasserstein, L. Estrella, M. Goldis, L. Waldman, R. Rapaport, M. Regelman.*

Abstract 492

10:45am

**Protein-Induced Hypoglycemia in KATP Hyperinsulinism Is Mediated by the GLP-1 Receptor**

*Mary Ellen Vajravelu, Katherine Lord, Stephanie Givler, Diva D. De Leon.*

Abstract 493

11:00am

**Hypoglycemia Associated Autonomic Failure (HAAF): Is the Activation of Unfolded Protein Response Associated with the Impaired Epinephrine Release in Recurrent Hypoglycemia?**

*Juhye Lena Kim, Necla Kudrick, Edmund F. La Gamma, Bistra Nankova.*

Abstract 494

11:15am

**Deficiency of ACAD10 Is Associated With Obesity and Insulin Resistance**

*Emir Tas, Zhenwei Gong, Kaitlyn Bloom, Kai Su, Jerry Vockley, Radhika Muzumdar.*

Abstract 495

11:30am

**Hypophosphatemia Associated With Elemental Formula Use in Children With Feeding Problems**

*Luisa F. Gonzalez B, Nina Ma, Leanne Ward, Philippe Backeljauw, Halley Wasserman, David Weber, Linda DiMeglio, Julie Gagne, Robert Stein, Declan Cody, Kimber Simmons, Paul Zimakas, Lisa Swartz Topor, Sungeeta Agrawal, Rebecca Gordon, Peter Tabben, Ruth Faircloth, Linda Casey, Erik Imel, Thomas Carpenter.*

Abstract 496

11:45am

**Precocious Puberty in Girls and MRI: A Meta-Analysis**

*Sena Cantas-Orsdemir, Jane L. Garb, Holley F. Allen.*

Abstract 497

12:00pm

**Different Murine Tissues Express Different Glucocorticoid Receptor (GR) Isoforms**

*Laura J. Novello, Mabel N. Abraham, Daniela M. Jimenez, Clifford S. Deutschman.*

Abstract 498

12:15pm

**Identification of Clinical and Pathologic Factors That Predict Bilateral Disease and Metastasis in Pediatric Patients with Low-Risk Differentiated Thyroid Cancer**

*Stephanie L. Samuels, Madeline Amberge, Ken Kazahaya, N. Scott Adzick, Sogol Mostoufi-Moab, Ganesh Krishnamurthy, Andrew J. Bauer.*

Abstract 499

**Hematology/Oncology/  
Immunology**

10:30am-12:30pm — *Minuet*

Moderator: *Melanie Wellington*

**10:30am**

**Development of a Clinical Prediction Model for Pediatric Outpatients at Risk for Central Line-Associated Bloodstream Infections**

*Laura Figueroa-Phillips, Susan Coffin, Christopher Bonafide, James Guevara.*

Abstract 500

**10:45am**

**Delirium in Hospitalized Children with Cancer: A Pilot Study Examining Incidence and Associated Risk Factors**

*Sydney Ariagno, Francesca Thau, David Pritchard, Joanne Chou, Rachel Kobos, Julia Kearney, Kevin Browne, Bruce Greenwald, Gabrielle Silver, Chani Traube.*

Abstract 501

**11:00am**

**Inhibitory Molecule CD31 Expression on CD4 T Cells at Birth Is Lower Earlier in Gestation, and Associates with Poor Respiratory Outcome at One Year**

*Kristin M. Scheible, Jason Emo, Heidie Huyck, David J. Topham, Rita Ryan, Tom Mariani, Anne Marie Reynolds, Gloria S. Pryhuber.*

Abstract 502

**11:15am**

**Expression of the BTB -ZF Transcription Factors Family in Neonatal Lymphocytes**

*Marwa Khalil, Barry Weinberger, Anna Vetrano, Joshua Vieth, Derek Sant'Angelo.*

Abstract 503

**11:30am**

**Differential Expression of T-bet and Eomesodermin Defines Two Populations of Natural Killer Cells in Human Fetal Organs**

*Amelie Collins, Steven L. Reiner.*

Abstract 504

**11:45am**

**Can Hyperglycemia Trigger a Pro-Inflammatory Environment in Neonatal Immune Cells?**

*Marina Epelman, Ellen Gurzenda, Xinhua Lin, Mina Botros, Nazeeh Hanna.*

Abstract 505

**12:00pm**

**Hyperoxia Leads to Differential Gene Expression in Cord Blood Monocytes**

*Swati Murthy, Suhita Gayen nee Betal, Sankar Addya, Swathi Raman, Deepthi Alapati, Zubair H. Aghai.*

Abstract 506

**12:15pm**

**Impact of Hyperoxia on Dendritic Cells**

*Sandy W. Cheung, Hardik Patel, Mark Pezzano, Mohamed Ahmed.*

Abstract 507

**Neonatal Neurology II**

10:30am-12:30pm — *Aria AB*

Moderator: *An Massaro & Sudeepta Basu*

**10:30am**

**Effect of Intranasally Delivered rhVEGF165 on Angiogenesis Following Cerebral Hypoxia-Ischemia in the Cerebral Cortex of Newborn Piglets**

*Amit Jain, Panagiotis Kratimenos, Amulya Buddavarapu, Jahan Ara.*

Abstract 508

**10:45am**

**Prophylactic Phenobarbital Enhances Neuroprotection of Therapeutic Hypothermia in the Term-Equivalent Hypoxic-Ischemic Rat**

*Sushma Krishna, Jeffrey Perlman, Susan Vannucci.*

Abstract 509

**11:00am**

**Anticonvulsant Drug Induced Apoptosis in the Developing White Matter**

*Suhasini Kaushal, Patrick A. Forcelli.*

Abstract 510

**11:15am**

**Premature Birth and Neonatal Complications Affect Diversity of Cortical Interneurons in Humans**

*Sanjeet K. Panda, Praveen Ballabh.*

Abstract 511

**11:30am**

**Erythropoietin Signaling Regulates a Key Epigenetic Pathway in Human Neural Progenitor Cells**

*Christina Sollinger, Jeffrey Malik, Michael Getman, Laurie Steiner.*

Abstract 512

**11:45am**

**Glycemic Profile Phenotypes in Infants with Hypoxic Ischemic Encephalopathy Predicts Response to Hypothermia Treatment: Post Hoc Analysis of the CoolCap Study**

*Sudeepta K. Basu, Jeffrey R. Kaiser, Jason L. Salemi, Alistair J. Gunn.*

Abstract 513

**12:00pm**

**Cerebral Edema Following Hypoxia in Newborn Piglets**

*Jessica Button, Amulya Buddavarapu, Maria Delivoira-Papadopoulos, John Gruthosen, Jane McGowan, Shadi Malaeb.*

Abstract 514

**12:15pm**

**Impaired Cerebral Autoregulation Is a Predictor of Intraventricular Hemorrhage and Death**

*Suma B. Hoffman, Yun-Ju Cheng, Laurence S. Magder, Rose M. Viscardi.*

Abstract 515

**Pulmonary Therapeutics**

10:30am-12:30pm — *Overture*

Moderators: *Helen Christou, Sailaja Ghanta*

**10:30am**

**Ibuprofen Therapy in Children Hospitalized with Pneumonia**

*Talia A. Roth, Amanda J. Clark, Jaewon Choi, Lindsey C. Douglas.*

Abstract 516

**10:45am**

**Pulmonary Function Using Respiratory Inductive Plethysmography in Preterm Infants Treated with HFNC vs. NCPAP: Effect at Hospital Discharge**

*Soraya Abbasi, Emidio M. Sivieri, Jeffrey S. Gerdes.*

Abstract 517

**11:00am**

**Characterization of Preterm Umbilical Cord-Derived Mesenchymal Stromal Cells for Neonatal Lung Injury Repair**

*Merline Kocheekaran V. Benny, David R. Mills, Quanfu Mao, Sharon Chu, James F. Padbury, Monique E. De Paepe.*

Abstract 518

**11:15am**

**High Versus Therapeutic Doses of Caffeine Effects on Biomarkers of Inflammation and Oxidative Stress in the Lungs of Neonatal Rats Exposed to Hyperoxia and Intermittent Hypoxia**

*Johanna M. Calo, Charles Cai, Kultida Soontarapornchai, Taimur Ahmad, Jacob V. Aranda, Kay Beharry.*

Abstract 519

**11:30am**

**Neonatal Caffeine Improves Alveolization in the Presence of Hyperoxia in Adult Mice**

*Vikramaditya Dumpa, Lori Nielsen, Huamei Wang, Vasantha H.S. Kumar.*

Abstract 520

**11:45am**

**The Effect of Whole Body Hypothermia on Pulmonary Vascular Reactivity and Response to Inhaled Nitric Oxide**

*Bushra Afzal, Justin Helman, Carmon Koenigskecht, Sylvia Gugino, Satyan Lakshminrusimha.*

Abstract 521

**12:00pm**

**Early Initiation of Inhaled Nitric Oxide (iNO) Reduces Inflammation and Oxidative Stress and Alters Lung Morphology in Ovine Persistent Pulmonary Hypertension of the Newborn (PPHN)**

*Namrita J. Odackal, Shetal I. Shah, Sylvia F. Gugino, Lori C. Nielsen, Devaraj Sambalingam, Satyan Lakshminrusimha.*

Abstract 522

**12:15pm**

**Improved Growth and Participation in Developmental Activity after Tracheostomy in Infants with Severe Bronchopulmonary Dysplasia**

*Jun Luo, Suzanne L. Shepard, Kathleen Nilan, Ann T. Harrington, Kathryn Maschhoff, Haresh Kirpalani, Huayan Zhang.*

Abstract 523

# Abstract Presenter Index

Index numerals refer to the Abstract number, not the page number. Only Presenting Abstract Authors are included in the Index.

Abaya, Ruth.....303, 325	Dyke, Jonathan P.....78	Jones, Brianna.....343	Mohammed, Tazuddin A.....61	Schutzman, David L.....464
Abbasi, Soraya.....517	Eccles, Shannon L.....456	Jones, Melissa U.....25	Mohammed, Taluzdin Azmi.....97	Seecof, Olivia M.....221
Aboudi, David.....354	Edwards, Jonathan J.....469	Joshi, Shivani.....328	Mukhopadhyay, Sagori.....281	Segal, Daniel.....63
Abrams, Anna H.....429	Eisenson, Heather.....348	Justiv, Sarah P.....35	Munshi, Upender K.....288	Selman, Jay E.....292
Adegite, Caroline O.....230	Elisabeth, Arson.....426	Kaczmarski, Katerina R.....90	Murkosko, Daria C.....353	Sengupta, Shaon.....209
Adesman, Andrew.....24	Ellen, Stacy B.....440	Kaj, Batul.....5	Murray, Peter D.....136	Sethuram, Swathi.....410
Adirim, Terry A.....302	Elshenawy, Summer.....264	Kancherla, Karishma K.....62	Murthy, Swati.....267, 371, 461, 506	Sewell, Elizabeth K.....204, 346
Afzal, Bushra.....521	Engelberg, Rachel.....13	Karbalivand, Hoda.....412	Nachman, Rebecca M.....15	Shah, Shetal I.....194
Ahmed, Mahmuda M.....406	Enlow, Elizabeth.....19, 70, 355	Karber, Bianca Cecilia F.....369	Nadler, Ariella.....485	Shapiro, Natasha.....373
Ahmed, Tasnim.....52	Ennis, Christine.....134	Kasmire, Kathryn E.....313	Nadroo, Ali M.....113	Sharif, Iman.....32, 186
Akinmboni, Temitope.....148	Enzer, Katelyn.....3	Katz, Cynthia.....427	Naganathan, Srividya.....22	Shastri, Sonia.....76
Alapati, D.....141, 222	Epelman, Marina.....505	Kaushal, Suhasini.....158, 510	Nariai, Shiori.....434	Sheldrick, Radley C.....395
Afzal, Deepthi.....109	Falck, Alison J.....72	Kaye, Dylan J.....6	Nayak, A.....189, 358	Shelkowitz, Emily.....137
Alexander, Jennifer P.....285	Faranz-Kabir, Saba.....81	Kaza, Elisabeth.....254	Negrete, Alejandro.....183	Shui, Jessica E.....116
Alexanian, Claire.....321	Favara, M.....124	Kazmi, Sadaf H.....106	Nelson, Courtney E.....491	Shukla, Khushbu.....130
Ali, Ather.....7	Feinstein, R.....298	Kazmierczak, Magdalena.....58	Ngo, Thuy L.....227	Siems, Ashley L.....384
Amirtharaj, Cynthia R.....350	Feldman, Alexander.....449	Keenum, Johnathan P.....243	Nielsen, Heber C.....205	Sifain, Shanley.....102
Antonio, Albert O.....110	Fernandes, Nithi.....242, 473	Kehinde, Folasade.....272	Ninan, Elizabeth T.....396	Silberholz, Elizabeth.....436
Aquino, Julia F.....428	Fernandez, Cristina R.....270	Khalil, Marwa.....503	Nocera, Mariann.....306	Singh, Ajay Pratap.....129
Ariagno, Sydney.....501	Fernandez, Katrina.....277	Khan, Farah.....299	Noh, El.....452	Singh, Meenakshi.....166
Arora Puneet.....444	Ferrucci-Da Silva, Christina.....265	Khanna, Prarthana.....266	Noor, Irum.....9	Singhi, Vrinisha.....200
Arsonow, Christine M.....442	Figueroa-Phillips, Laura.....500	Khokhar, Aditi.....417	North, Krysten.....336	Sivieri, Emidio M.....245
Assaad, Remon.....318	Fiks, A.G.....34	Kiely, Bridget.388,389, 398, 399,482	Novello, Laura J.....498	Smith, Nadine M.....233
Assad, Maushumi.....190	Fisler, Grace.....36	Kim, Aram.....483	Nunez, Jeanne.....251	Snyder, Ruth.....75
Atkinson, Meredith.....88	Flannery, Dustin D.....168, 372	Kim, Connie.....197	O'Connell, Rosemary.....161	Sodhi, Misha.....39
Awadalla, Nicol R.....42	Fletcher, Laura.....14, 37	Kim, Juhye Lena.....494	O'Connor, Matthew C.....349	Sollinger, Christina.....512
Aziz, Khyzer.....17	Flower, Allyson.....56	Kirsch, Sarah.....320	Odackal, Namrita J.....522	Solomon, Michelle.....487
Balamohan, Archana.....44	Forman, Katie R.....151	Kiskis, Erin C.....293	Ojukwu, Ekene.....191	Spaight, Morgan.....375
Balany, Jherna.....156, 380	Fox, Jenny R.....140	Klausner, Rachel.....445	Ola, Olayemi.....235	Sprecher, Eli.....441
Baloch, Rafia Q.....138	Fraser, Lori D.....387	Kline, Matthew.....488	Ortiz, Luis E.....207	Sreekantha, Sreevidya.....447
Bamanikar, A.....460	Frederico, Nicholas M.....8	Kocheekaran V. Benny, Merline.....518	Oshita, Jennifer.....162	Srinivasan, L.....104
Bamat, Nicolas A.....127	Freiberger, Christina M.....119	Koenigsnecht, Carmon.....471	Owusu-Ansah, Sylvia.....327	Srinivasan, Pinchi.....462
Bansal, Shipra.....425	Friedman, Jared.....319	Koofsky, Sarah.....274	Pai, Vidya V.....101	Srivastava, Shrinkhala.....411, 413
Basu, Sudeepta K.....513	Fuloria, Mamta.....295	Kolb, Kendra.....132	Panda, Sanjeet.....344	Stewart, Miriam T.....108, 419
Bauman, Allison.....405	Gaba, Michelle.....484	Kondamudi, Noah.....234	Panda, Sanjeet K.....511	St-Laurent, Aaron G.S.....57
Beauchamp, Joanna C.....155	Ganguli, Suhas K.....211	Kothari, Ulka T.....31	Pandya, Shachee P.....455	Strysko, Jonathan.....195
Beam, Kristyn S.....133	Garbi, Lyndsey R.....362	Kratimenos, Panagiotis.....199, 347	Parks, Olivia B.....269	Stuart, Tami J.....260
Bechtel, Kristen A.....385	Garfinkel, Amanda C.....77	Kruskal, Matthew P.....91	Patel, Bhavi.....218	Subramaniam, Sathyaeselan.....423
Berdy, Stephanie.....287	Garimella, Sudha.....89	Kruma, Sushma.....341, 509	Paudel, Umesh.....366	Sundararajan, Sriprya.....146, 257
Berger, Rebecca.....10	Geis, Gina M.....421	Kumar, Munish.....99	Pearce, Sarah E.....83	Sycop, Marc G.....33
Bhalakia, Avni M.....2	George, Bettina.....79	Kushnir, Alla.....128	Pennaforate, Thomas.....92	Sykes, Brian.....216
Bosenbark, Danielle.....400	George, Maria.....282	Kusulas, Matthew P.....490	Pham, Tammy B.....331, 479	Tas, Emir.....403, 495
Box, David.....457	Germain, Blair.....73	Lainwala, S.....458	Philipose, Ceena.....27	Thekumparampil, Rani K.....86, 356
Brady, Steven K.....160	Gherlone, Nicole.....300	Lakkaraj, Madhavi.....55	Piccinini, Jenna.....382	Tibrewal, Mahima.....259
Brescia, AnneMarie C.....214	Giesinger, Regan E.....470	Lamba, Vineet.....180	Pilon, April L.....80	Tiedemann, Laura M.....144
Brezinsky, Donna J.....329	Goel, Swati.....275	Leavens, Karla F.....409	Polavarapu, Nisha.....315, 323	Tiozzo, Caterina.....114
Brodie, Nicola.....437	Goenka, Pratichi K.....181	Lee, Dianne.....386	Polavarapu, Sruthi.....342	Tokarski, Julia R.....176
Brown, Amanda.....165	Goldis, M.....407	Lee, Monica H.....208	Pollaro, Michael.....74	Toner, Kerri.....420
Burdett, Catherine.....316	Goldstein, Justin R.....123	Lee-Parik, Juniper J.....339	Porter, George A.....261	Touch, Suzanne M.....154
Burtman, E.....492	Gomes, Carly L.....330	Leem-Park, Amy L.....67, 276	Portillo, Elyse.....45	Tran, Nghia N.....159
Button, Jessica.....514	Gonzalez, Luisa F.....496	Levin, Amanda B.....379	Portofino, Karim P.....258	Tyngyu, Donna.....193
Cain, Melissa S.....305	Gonzalez, Kymberly M.....26	Li, Boran.....433	Pouppirt, Nicole.....142	Ukwoma, Onyinyechi.....309
Calo, Johanna M.....117, 519	Goodman, Mera.....49	Liang, Tian.....232	Powell, Michael W.....95	Utturkar, Yogen.....448
Canares, Therese.....312	Gordon, Scott M.....279	Lind, Elaine.....432	Prabhu, Elizabeth.....179	Vajravelu, Mary Ellen.....493
Cantata-Orsdemir, Sena.....497	Gorji, Nasim.....250	Lindberg, Tristan P.....238	Prakash, Neera.....465	Vail, Payam.....368
Capua, Maya.....307	Gray, Susan H.....378	Lingam, Jayson V.....163, 255	Prescott, Stephanie M.....121	Vangeepuram, Nita.....273
Carola, David.....157, 202	Griffiths, Megan.....430	Lioy, Janet.....143	Proper, Caitlin.....489	Vasconcellos, Mansi S.....103
Cassel-Choudhury, Gina.....294	Gummalla, Prabhavathi.....98	Lipener, Yisrael T.....431	Pulcini, Christian D.....225	Vazquez, Hector.....310
Chadha, Kunal.....177	Gupta, Aditi.....135	Liwig, Conalu.....54	Puopolo, Karen M.....278	Verma, Prasoon.....280
Chan, William.....415	Guttmann, Katherine.....82, 111	Lodhi, Shaina.....112	Qadri, Abdul.....41	Verma, Rita P.....147
Chandrasekharan, Praveen.....256	Hagadorn, J.J.....351	Lopez Da Re, Jorge M.....210	Quraishi, Mohammad A.....383	Verma, Sourabh.....463
Chen, Jarreau Spencer S.....443	Hall, Ashleigh J.....438	Lozada, Luis E.....286	Rajbhandari, Sharina.....153	Vinci, Alexandra.....459
Chen, Kesi.....363	Halstead, E. Scott.....220	Luckey, James T.....229	Raigarhia, Ayan.....468	Vo, Andrea T.....178
Cheung, Sandy W.....507	Harris, Matthew I.....301, 486	Ly, Eric.....252	Rathi, Pooja.....472	Volz, Sarah.....228
Chilukuri, Nymisha.....46	Harris, Tracey.....93	Ly, Eric M.....152, 268, 466	Rawat, Munmun.....241, 357	Wagner, Kari.....480
Chime, Nnenna O.....324	Harrison, Meghan.....392, 393	Malaeb, Shadi.....284	Re, Kimberly.....215	Walls, Theresa A.....231
Choksey, Karishma.....422	Hazra, Sahel.....16	Malcolm, Sharyn.....418	Restrepo, Bibiana.....478	Walsh, Christina K.....219
Christ, Lori.....150	Hellstrand, Karl.....322	Malhotra, Yogangi.....188	Rhein, Lawrence M.....120, 367	Washington, Whitney J.....439
Chu, Dorothy.....48	Heras, Andrea.....50	Mandich, MaryBeth.....338	Richmond, Tracy.....1	Watts, Delma-Jean.....40
Clark, Chelsey.....446	Hernandez, Ana S.....38	Marek, Elizabeth.....96	Richmond, Tracy K.....181	Weiss, Elliott M.....149, 377
Collins, Annelie.....504	Hersh, Amy.....29	Marshall, Alyssa.....71	Rikin, Sharon.....485	Whitaker, Alexander S.....435
Copes, Latresa V.....262	Himani, Sehera A.....30	Martin, James F.....175	Rindone, Shannon.....237	Woodall, William J.....43
Coughlin, Michelle C.....333	Hjorten, Rebecca.....85	Maryniak, Katarzyna.....171	Root, Jeremy M.....308	Woodys, Elizabeth R.....184
Cours, Alexandra F.....364	Hodcz, Zerina.....236	Massa-Buck, Beri.....84	Rosenwasser, Natalie L.....87	Yadav, Aparna C.....18, 182
Dadlez, Nina M.....21	Hoffman, Suma B.....515	Master, Dev.....4	Roth, Talia A.....516	Yadav, Kriti.....223
Dalal, Nupur N.....475	Howell, Joy.....381	Maxwell, A.....453	Rowlands, Megan A.....291	Yanni, Diana.....253
Dalope, Ros.....28	Howlader, Afrin.....271	May-Rabbach, Jessica.....345	Roy, Sani M.....296	Yeager, Stephanie K.....289
Davidson, Allison.....122	Hsu, Leewen J.....115	McCarthy, Madeline L.....317	Rubinos, Laura H.....68, 187, 352	Yen, Elizabeth.....244, 374
Davis, Thomas W.....174	Hua, Alexandra.....169, 224, 226, 337, 402, 477	McDonald, Matthew B.....20	Rubinstein, Tamar.....11	Yu, Daniel T.....414
DeMaria, Rebecca.....217, 332	Hui-Yuen, Joyce.....12, 213	McLean, Kaitlin M.....246, 247	Ruoss, J. Lauren.....424	Zager, Margaret L.....335
Devapatla, Srisatish.....249	Hussain, Farah.....164	McNamara, Erin R.....304	Sahni, Prateek.....283	Zaino, Allison E.....201
Diaz, Johana.....340	Hussain, Naveed.....240	McPherson, Rebecca L.....212	Saitzman, Morgan C.....118	Zhang, Huayan.....523
DiPillato, Amy E.....131	Iglesia, Delfin.....47	Mehra, Kashish.....94	Saltzman, Eliana B.....290	Zhang, Rachel.....23
DiPrisco, Bridget E.....334	Isler, J.R.....370	Memon, Naureen.....359	Samuels, Stephanie L.....499	Zia, Muhammad T.K.....263
Dizon, Samantha E.....451	Issapour, Azadeh A.....206	Mendoza Alvarez, Lybil B.....64	Sanchez, Joselito.....59	Zina, Jessica A.....454
Doherty, Meaghan.....474	Iyengar, Sandhya S.....401	Mendes-Smith, Amber.....53	Sandha, Harpavan S.....173	Ziskind, Daniela M.....391
Donoghue, Aaron.....326	Jack, Richard A.....467	Metzler, Marina.....203	Sandhan, Pravesh.....297	Zivot, Andrea T.....65
Doshi, Harshit.....192	Jain, Amit.....508	Michel, Jeremy.....51, 476	Sarda, Garima.....360, 361	Zylak, Anna.....69
Downey, Leah M.....172	Jimenez, Manuel.....394	Mintzer, Jonathan P.....125, 126	Savarimuthu, Stella M.....60	
Drago, M.J.....376	Joerger, Torsten A.....196	Miodovnik, Amir.....481	Scheible, Kristin M.....502	
Duby, Jessica E.....145	Johnson, Julia.....105	Mogliner, Leora.....416	Scheid, Annette.....198	
Duchon, Jennifer.....239	Johnson, K.R.....248	Mohamed, Adel A.....450	Schmatz, M.....107, 139	
Dumpa, Vikramaditya.....66, 167, 520			Shulman Lisa H.....390	

# Faculty

**Zubair Aghai, MD**

Nemours/Alfred I. duPont Hospital for Children  
Philadelphia, PA

**Mohamed Ahmed, MD**

Northwell Health Physician Partners  
New Hyde Park, NY

**Rafia Baloch, MD**

Jersey Shore University Medical Center  
Neptune City, NJ

**Kirsten Bechtel, MD**

Yale University School of Medicine  
New Haven, CT

**Lori Billinghamurst, MD, MSc**

The Children's Hospital of Philadelphia  
Philadelphia, PA

**Joseph M. Bliss, M.D., Ph.D.**

Women & Infants Hospital in Rhode Island  
Providence, RI

**Eda Cengiz, M.D.**

Yale University School of Medicine  
New Haven, CT

**Lori Christ, M.D.**

The Children's Hospital of Philadelphia  
Philadelphia, PA

**Helen Christou, M.D.**

Partners HealthCare  
Boston, MA

**Kevin Couloures, DO, MPH**

Yale University School of Medicine  
New Haven, CT

**James J. Cummings, M.D.**

Albany Medical Center  
Albany, NY

**Natalie Davis, MD**

University of Maryland School of Medicine  
Baltimore, MD

**Americo Esquibies, MD**

Yale University School of Medicine  
New Haven, CT

**Evan Fieldston, MD, MBA, MSHP**

The Children's Hospital of Philadelphia  
Philadelphia, PA

**Sailaja Ghanta, MD FAAP**

Partners HealthCare  
Needham Heights, MA

**Semsa Gogcu, MD**

Maria Fareri Children's Hospital,  
New York Medical College  
Valhalla, NY

**Beatrice Goilav, MD FAAP**

The Children's Hospital at Montefiore  
Bronx, NY

**Steven Goldstein, MD**

New York University  
New York NY

**Misty Good, MD**

University of Pittsburgh Medical Center  
Pittsburgh, PA

**Jay S. Greenspan, M.D.**

Nemours/Alfred I. duPont Hospital for Children  
Philadelphia, PA

**Hnin Khine, MB, BS**

The Children's Hospital at Montefiore  
Bronx, NY

**Satyan Lakshminrusimha, M.D.**

University at Buffalo  
Buffalo, NY

**Shadi N. Malaeb, M.D.**

Drexel University College of Medicine  
Philadelphia, PA

**Ronald Vincent Marino, DO MPH FAAP**

Winthrop University Hospital Program  
Mineola, NY

**An Massaro, MD**

Children's National Health System  
Washington, DC

**Ruth Milanaik, DO**

Northwell Health Physician Partners  
New Hyde Park, NY

**Margaret Rusha Moon, MD FAAP**

The John Hopkins School of Medicine  
Towson, MD

**Patoula Panagos, MD**

Nemours/Alfred I. duPont Hospital for Children  
Wilmington, DE

**Jamie M. Pinto, M.D.**

K. Hovnanian Childrens Hospital  
Neptune, NJ

**George A. Porter, M.D., Ph.D.**

University of Rochester Medical Center  
Rochester, NY

**Joni E. Rabiner, MD**

The Children's Hospital at Montefiore  
Bronx, NY

**Renee Reijo Pera, Ph.D.**

University of California, San Francisco  
San Francisco, CA

**Eugene D. Shapiro, M.D.**

Yale University School of Medicine  
New Haven, CT

**Pranavkumar Shivakumar, Dpharm, PhD (Tech)**

Cincinnati Children's Hospital Medical Center  
Cincinnati, OH

**Sharon Smith, MD**

Connecticut Children's Medical Center  
Hartford, CT

**Kate Tauber, MD**

Albany Medical Center  
Albany, NY

**Khoon-Yen Tay, MD**

The Children's Hospital of Philadelphia  
Philadelphia, PA

**Rose Marie Viscardi, MD FAAP**

University of Maryland Medical Center  
Baltimore, MD

**Melanie Wellington, MD, PhD**

University of Rochester Medical Center  
Rochester, NY

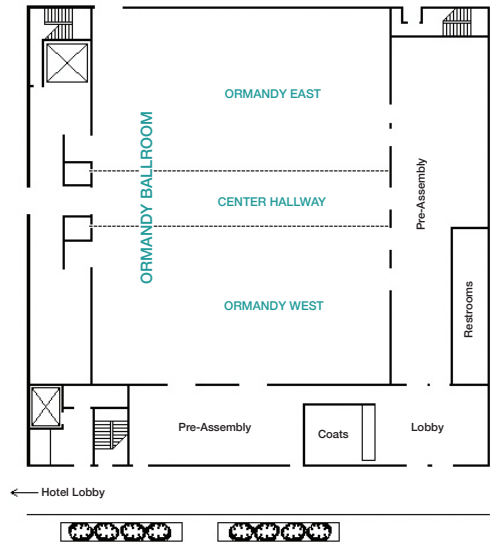
**Catherine C. Wiley, MD**

Connecticut Children's Medical Center  
Hartford, CT

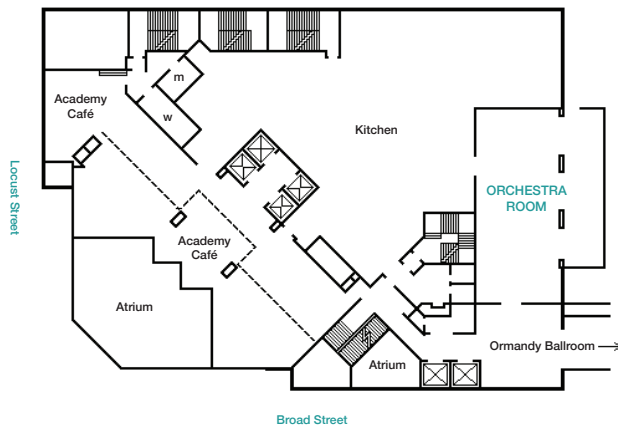


# DOUBLETREE HOTEL PHILADELPHIA FLOOR PLANS

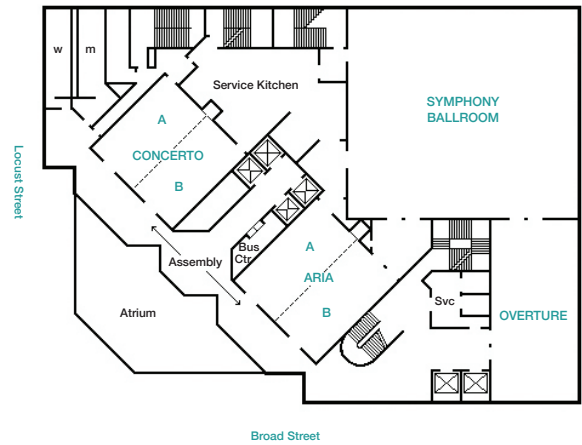
## LOBBY LEVEL



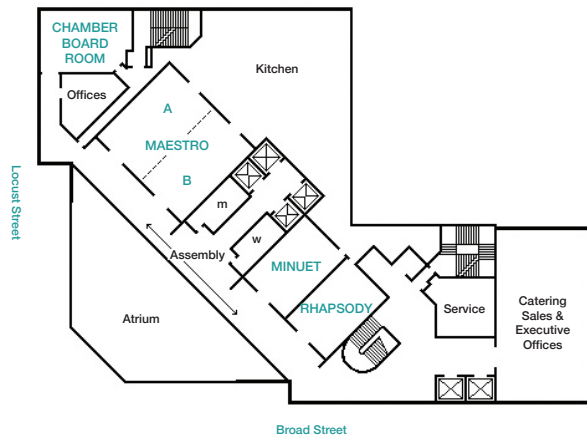
## SECOND FLOOR



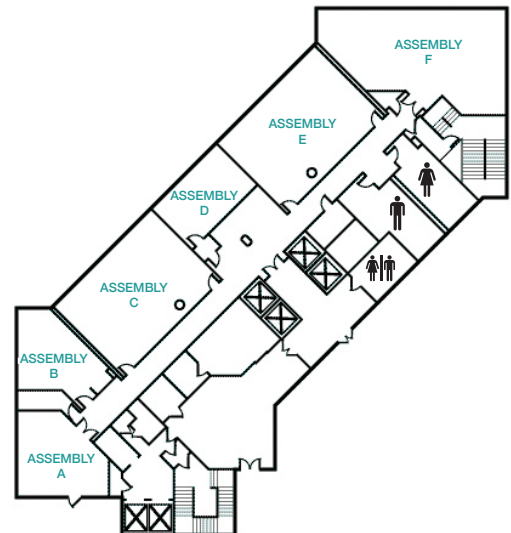
## THIRD FLOOR



## FOURTH FLOOR



## FIFTH FLOOR





## SAVE THE DATES!

**29TH Annual ESPR Meeting**  
**March 24<sup>th</sup> - 26<sup>th</sup>, 2017**  
**Philadelphia, PA**

**ESPR Program Office**  
**3400 Research Forest Drive, Ste. B-7**  
**The Woodlands, TX 77381**  
**Email: [espr-info@aps-spr.org](mailto:espr-info@aps-spr.org)**  
**Phone: 281-419-0052**  
**Web: [www.aps-spr.org/ESPR](http://www.aps-spr.org/ESPR)**

