

2015 ESPR ANNUAL MEETING

PROGRAM GUIDE

Philadelphia, PA ~ March 20-22



Jointly Sponsored By: The Center for Continuing Education, Tulane University Health Sciences Center



Eastern SP^R Officers & Council

Chairperson, Planning Committee

Joseph Bliss, MD, PhD
Women & Infants Hospital of Rhode Island
Providence, RI
Email: jbliss@wihri.org
Phone: (401) 274-1100

Director of Sponsorship

Jeffrey Shenberger, MD
Baystate Medical Center
Springfield, MA
Email: jeffrey.shenberger@baystatehealth.org
Phone: (413) 794-0093

Planning Committee

Kirsten Bechtel, MD
Mark Cicero, MD
Shetal Shah, MD, FAAP

Nominations Committee

Heather Brumberg, MD, MPH (Chair)
Maria Fareri Children's Hospital at Westchester
Medical Center
Valhalla, NY
Email: heather_brumberg@nymc.edu
Phone: (914) 493-8491

Councilors

Zubair Aghai, MD	2013-2017
Joseph Bliss, MD	2011-2015
Heather Brumberg, MD, MPH	2014-2017
Mark Cicero, MD	2014-2017
Vasanth Kumar, MD	2011-2015
Murli Purswani, MBChB, FAAP	2012-2016
Jeffrey S. Shenberger, MD	2012-2016
Steven Rogers, MD	2014-2017
Alfin Vicencio, MD	2014-2018

Past Presidents

2011-2014	Vineet Bhandari, MD, DM
2008-2011	Lawrence M. Noguee, MD
2005-2008	Bruce D. Gelb, MD
2002-2005	Luc P. Brion, MD
1999-2002	Mitchell J. Kresch, MD
1996-1999	Ira H. Gewolb, MD
1993-1996	Alan R. Fleischman, MD
1991-1993	Marc Yudkoff, MD
1989-1991	Joseph B. Warshaw, MD
1988-1989	Laurence Finberg, MD

President 2014-2017

George A. Porter, Jr., MD, PhD
University of Rochester Medical Center
Rochester, NY
Email: george_porter@URMC_rochester.edu
Phone: (585) 276-4769

Secretary 2011-2016

Michael Posencheg, MD
Division of Neonatology and Newborn Services
Hospital of the University of Pennsylvania
Philadelphia, PA
Email: posencheg@email.chop.edu
Phone: (215) 615 - 4376

Treasurer 2011-2016

Jason Z. Stoller, MD
Children's Hospital of Philadelphia
Philadelphia, PA
Email: stoller@email.chop.edu
Phone: (215) 590-4393

Contents

	Page
Sponsorship Honor Roll	1
Recognition of New Members	2
Press Guidelines	3
Meeting Services & CME Accreditation	4
Schedule-at-a-Glance	5
Friday Programming	6-8
Saturday Programming	8-19
Sunday Programming	19-23
Faculty	24
Author Index	25
Note Pages	26
Hotel Maps	inside back cover

Sponsorship Honor Roll

The ESPR would like to express appreciation to the following companies for their support:

Corporate Sponsors

Abbott Nutrition
Chiesi USA
Mead Johnson Nutrition

Display Tables

Abbott Nutrition
Chiesi USA
COSMED, USA, Inc.
Ikaria
Nestle Infant Nutrition
Nutricia North America
ONY, Inc.
Pediatrix Medical Group
Proclata Bioscience

Support our exhibitors by visiting their booths.

Friday	6:00 pm - 7:30 pm
Saturday	7:00 am - 8:00 am
	9:30 am - 9:45 am
	3:15 pm - 3:30 pm
Sunday	6:00 pm - 7:30 pm
	7:30 am - 9:00 am
	10:15 am - 10:30 am

Academic Sponsors

Baystate Children's Hospital
Charlotte Boney, MD
Springfield, MA

Children's and Women's Physicians of Westchester
Leonard Newman, MD
Valhalla, NY

Children's Hospital at Dartmouth
Keith Loud, MD

Connecticut Children's Medical Center
University of Connecticut School of Medicine
Juan C. Salazar, MD, MPH
Hartford, CT

Department of Pediatric at the
Children's Hospital of Philadelphia
Joseph W. St. Geme III, MD
Philadelphia, PA

Icahn School of Medicine at Mount Sinai
Lisa Satlin, MD
New York, NY

NYULMC Department of Pediatrics
Catherine S. Manno, MD
New York, NY

Women & Infants Hospital of Rhode Island
James Padbury, MD
Providence, RI

Yale University School of Medicine
George Lister, MD
New Haven, CT



Dear Colleagues,

Welcome to the 27th Annual Meeting of the Eastern Society for Pediatric Research (ESPR) and to our host city of Philadelphia, the Cradle of Liberty!

The Eastern Society for Pediatric Research Council and Planning Committee are confident that you will enjoy our exciting program. Highlights include State-of-the-Art Plenary Talks and the highly popular Fellow's Clinical Case Presentation Competition. High-quality original research is presented in sub-specialty platform sessions with leading clinical and scientific authorities moderating the presentations and in four poster sessions.

The goals of the Eastern SPR Annual Meeting are to create a forum where: i) young investigators can present their research in a structured yet relaxed atmosphere, ii) regional clinicians can be exposed to cutting edge clinical and basic science, iii) timely educational programs addressing important topics in Pediatrics are presented and iv) trainees are able to interact with senior investigators and clinicians in an informal setting.

The continued success of our previous meetings has enabled an entirely web-based system for membership, registration and payments, in making timely announcements, in enhanced room booking services, and for the improvement in the overall ease of running the meeting. In addition, we again have centralized informatics enabling presenters to load their slide-show in advance at a speaker-ready station.

ACKNOWLEDGEMENTS: The organization of this meeting would not have been possible without the help of the administrative offices of the American Pediatric Society (APS) and the Society for Pediatric Research (SPR). We are especially grateful to: Kate Culliton (Interim Executive Director), Belinda Thomas, Carmen Beck and Lisa Thompson. We also recognize the energetic efforts of the Eastern SPR Planning Committee and Council Members for their guidance and vision in selecting this new venue and the efforts of Tulane University Health Sciences Center as our 2015 sponsor for the CME program. In addition, we thank various members of the regional pediatric community for reviewing the submitted abstracts and for moderating our platform sessions. Lastly, our corporate and leading academic sponsors were instrumental in making this meeting possible.

Most of all, we want to thank you for attending and for contributing your wisdom and experience in the pursuit of excellence. We hope that you enjoy and profit from the meeting, and look forward to your continued participation in future meetings!

George Porter, Jr., MD, PhD
President

Michael Posencheg, MD
Secretary

Joseph Bliss, MD, PhD
Chair, Planning Committee





THE EASTERN SOCIETY FOR PEDIATRIC RESEARCH

RECOGNITION OF NEW MEMBERS

The Council of the Eastern Society for Pediatric Research would like to recognize the following new members who have joined the society within the last year.

Membership in the Society reflects not only peer recognition of research achievements in pediatrics, but continuing commitment to pediatric research and fostering the career development the next generation of pediatric researchers. The Council and Society members welcome active participation in the organization. Like our parent organization, the Eastern SPR seeks to promote the generation of new knowledge, the professional growth of the current and next generation of academic pediatricians, and the translation of research discoveries into treatments that will benefit children worldwide. We believe that membership and active participation in the Eastern Society for Pediatric Research can meaningfully contribute to professional success as an academic pediatrician.

To celebrate this achievement, new members will be recognized at the Opening Reception on Friday, March 20, 2015. Once again, congratulations and welcome to the Eastern Society for Pediatric Research.

Naureen Memon, M.D., Rutgers Robert Wood Johnson Medical School
Cecilia Thompson, M.D., Icahn School of Medicine at Mount Sinai
Sheemon Zackai, M.D., Mount Sinai Medical Center

AAP CREDITS

This continuing medical education activity has been reviewed by the American Academy of Pediatrics and is acceptable for a maximum of **11** AAP credits. These credits can be applied toward the AAP CME/CPD Award available to Fellows and Candidate Members of the American Academy of Pediatrics.

Process for Attendees to Receive AAP Credit:

AAP Credit for attendees is recorded only when an attendee submits a copy of his/her certificate of attendance (pick up at the registration desk), **with AAP ID number**, to the American Academy of Pediatrics. The address to mail the certificate is:

American Academy of Pediatrics, Attn: Transcript Coordinator
141 Northwest Point Blvd., Elk Grove, IL 60007-1098
Fax: 847-434-8387



2015 ESPR Press Guidelines

Thank you for your interest in covering pediatric topics offered at the annual meeting of the Eastern Society for Pediatric Research (ESPR). The annual meeting is a private meeting of the ESPR. The granting of media credentials for the meeting is at the sole discretion of the ESPR program committee.

Please note the following ESPR Press guidelines and media credentialing policies for the meeting.

Press Badges

Only individuals who are working for and representing a recognized news organization may register as press. To receive a press badge, working journalists must provide identification such as a business card, letter of assignment and published samples of bylined work, preferably stories relating to pediatric health. All freelance journalists must provide a letter of assignment on company letterhead from an editor of a recognized news organization certifying you are covering the ESPR annual meeting for the organization. Press badges are available only to working journalists who can show evidence that their attendance will result in coverage of the ESPR meeting. You may register at the ESPR Registration Desk at the Doubletree Hilton Philadelphia beginning Friday, March 20 at 4:00 pm.

Based on space requirements, ESPR retains the right to limit the number of press badges issued to a single media organization. ESPR does not issue press badges to: publishers or a publication's advertising, marketing, public relations or sales representatives; publishers, editors or reporters from manufacturers' house organs or promotional publications; public relations staff of exhibitors or educational institutions; or other individuals or their representatives who are not actually reporting on the meeting. Any Press badge holder, who sells, markets or represents a company or organization for the purpose of obtaining advertising or subscriptions from any meeting registrant or exhibitor immediately forfeits press credentials.

A press badge allows media to attend all ESPR sessions being held during the dates of March 20 – 22, 2015. It must be worn at all times and obtained before attending and session. A press badge is not to be shared.

Registration fees for working press are waived. ESPR considers working press to be editorial staff of newspapers or magazines, medical or health care publications and broadcast or Web-based media.

Photography and Video

Television crews, documentary film crews, video crews and photographers covering the meeting are required to check in immediately at the ESPR Registration Desk each day, and must be accompanied at all times by a ESPR Officer or staff member when shooting inside the hotel. Shooting schedules and on-camera interview requests must be provided in writing in advance to ensure staff availability. As a courtesy to presenters, television and video crews, photographers, and radio reporters must obtain permission from the speaker and moderator *before* recording or filming an interview. Media may not photograph or videotape an exhibit booth or other display without the permission of the exhibitor and ESPR. This includes use of camera phones, personal digital cameras and other handheld devices.

Scientific Papers

In order to help maintain their eligibility for peer-reviewed journal publication, some researchers may not want to make themselves available for media interviews. Journalists who want to use slides, graphs and other visuals to illustrate coverage must have the presenter's permission.

ESPR appreciates your interest in child health issues. We hope that you have an instructive and enjoyable time at our meeting and encourage you to join us at future meetings. Please let us know if we can help you in any way.

Meeting Services & CME Accreditation

Registration and CME Desk Hours

Registration will be held on the 3rd floor. Registration hours are as follows:

Friday, March 20	4:00pm – 7:30pm
Saturday, March 21	6:00am – 7:30pm
Sunday, March 22	6:30am – 12:00pm

Abstract Publication

All abstracts being presented at the 2015 Eastern SPR Annual Meeting are viewable on the ESPR homepage.

Audio/Visual Information

All oral presentations must be made using PowerPoint. Computers and LCD projectors will be provided. Presenters that have submitted their presentations in advance, are still required to check in at Speaker Ready.

Speaker Ready (Chamber Board Room-4th floor)

Presentations will be loaded onto a central computer prior to the session in which the presentation is to be made (i.e., Friday evening for Saturday morning presentations, Saturday morning for Saturday afternoon presentations, and Saturday afternoon for Sunday morning presentations). Please also bring your CD-ROM, ZIP drive or flash memory.

The speaker ready room hours are as follows:

Friday, March 20	4:00pm – 7:30pm
Saturday, March 21	7:00am – 7:30pm
Sunday, March 22	7:30am – 12:00pm

Overview

Research and technology are changing rapidly in medicine and it is important for physicians and healthcare professionals to critically evaluate the emerging developments. Physicians and healthcare professionals in pediatrics need to increase their competence in discerning which of the emerging research and technologies are applicable to their patient populations. Discussions and debates on these emerging data stimulate the development of new guidelines, appropriateness criteria and evidence-based changes in medical practice.

The ESPR annual meeting provides a forum for young investigators to share their translational and clinical research with mentors and senior investigators. This gives the junior investigators important feedback in a non-threatening environment, provides for critiques and opportunities to improve the presentation before presenting on a national stage, and fosters mentoring from senior investigators.

The senior investigators benefit from this educational format by engaging in discussions on how to translate the research into practice, debates on how the new information supports or discredits the “old” information, and assists in the design of possible new research options and extensions.

Statement of Need

The Eastern Society for Pediatric Research Annual Meeting addresses a three-fold need:

1. Young investigators need to increase their competence and performance in presenting their research in a structured yet relaxed atmosphere.
2. Regional clinicians need to increase their competence in evaluating and designing strategies to incorporate cutting edge clinical and basic science into practice.
3. Trainees need to increase their competence and performance in establishing collaborative relationships with mentors to address the barriers which may be interfering with research development.

Target Audience

This course is designed for physicians, nurses, and allied health professionals in pediatrics, both in training and in practice.

Goal

The overall goal of this meeting is to improve patient care by increasing learner competence in evaluating the emerging translational and clinical research in pediatrics and determining parameters for expansion and modification of promising research developments.

Learner Objectives: At the conclusion of this activity, participants should be better able to:

- Critically evaluate the emerging translational and clinical research.
- Discuss new developments in pathophysiology of human disease with colleagues
- Identify new areas of investigation which will inform research and improve patient care.

- Develop optimal strategies for clinical investigation and transmission of clinical research results.
- Develop relationships with mentors and peers to address the barriers which interfere with research development.

Predicted Outcomes

Predicted Changes in Practice as a result of participating in this activity may include the ability to:

- Determine whether appropriate changes need to be recommended in patient protocols as indicated in the emerging research data.
- Implement new tools for teaching, research and medical practice.
- Apply appropriate evidence based recommendations in my research, teaching and/or medical practice.
- Present research in a national forum.
- Establish collaborations to expand or address barriers which are identified

Accreditation:

This activity has been planned and implemented in accordance with the accreditation requirements policies of the Accreditation Council for Continuing Medical Education (ACCME) through the joint providership of Tulane University Health Sciences Center and the Eastern Society for Pediatric Research. Tulane University Health Sciences Center is accredited by the ACCME to provide continuing medical education for physicians.

Designation

Tulane University Health Sciences Center designates this live activity for a maximum of *11 AMA PRA Category 1 Credits™*. Physicians should claim only the credit commensurate with the extent of their participation in the activity.

Tulane University Health Sciences Center and the Eastern Society of Pediatric Research presents this activity for educational purposes only and does not endorse any product, content of presentation or exhibit. Participants are expected to use their own expertise and judgment while engaged in the practice of medicine. The content of the presentations is provided solely by presenters, who have been selected because of their recognized expertise.

Tulane Disclosure Policy

It is the policy of the Center for Continuing Education at Tulane University Health Sciences Center to plan and implement all of its educational activities in accordance with the ACCME's Essential Areas and Policies to ensure balance, independence, objectivity and scientific rigor. In accordance with the ACCME's Standards for Commercial Support, everyone who is in a position to control the content of an educational activity certified for *AMA PRA Category 1 Credit™* is required to disclose all financial relationships with any commercial interests within the past 12 months that creates a real or apparent conflict of interest. Individuals who do not disclose are disqualified from participating in a CME activity. Individuals with potential for influence or control of CME content include planners and planning committee members, authors, teachers, educational activity directors, educational partners, and others who participate, e.g. facilitators and moderators. This disclosure pertains to relationships with pharmaceutical companies, biomedical device manufacturers or other corporations whose products or services are related to the subject matter of the presentation topic. Any real or apparent conflicts of interest related to the content of the presentations must be resolved prior to the educational activity. Disclosure of off-label, experimental or investigational use of drugs or devices must also be made known to the audience.

Tulane University Health Sciences Center and the Pediatric Academic Societies have made every effort to present the program schedule as accurately as possible from information available at the time of printing. We reserve the right to make changes and adjust the number of credits if necessary.

How To Obtain Your AMA PRA Category 1 Credits™

Tulane and the Eastern Society for Pediatric Research use a secure electronic format for evaluation and credit verification. The evaluation remains anonymous but the link does allow you to give us your contact information which will be incorporated into the Certificate of Credit.

At the conclusion of the conference on Sunday, you will be sent a link to an electronic evaluation and credit verification form from cme@tulane.edu. If you do not receive this in your inbox on Sunday afternoon, check your spam/junk mailbox. You can contact cme@tulane.edu if you did not receive it and Tulane will send you another link for claiming your credits.

You will receive your certificate of credit by Thursday, May 1, 2015. If you do not receive it by then, please notify Tulane University at cme@tulane.edu.

Eastern SPR Schedule-at-a Glance

Friday, March 20

6:00pm-7:30pm

Poster Session I

Opening Reception

— Symphony Ballroom - 3rd Floor —

Saturday, March 21

7:00am-8:00am

Continental Breakfast

— Symphony Ballroom - 3rd Floor —

Poster Session II

— Symphony Ballroom - 3rd Floor —

8:00am-9:30am

Emergency Medicine I - Lung/Trauma

— Aria A - 3rd Floor —

Neonatal Neurology I

— Concerto A/B - 3rd Floor —

Neonatology: Breast Milk

— Overture - 3rd Floor —

Adolescent Medicine

— Rhapsody - 4th Floor —

General Pediatrics I

— Maestro B - 4th Floor —

Infectious Disease I

— Minuet - 4th Floor —

Pulmonology

— Maestro A - 4th Floor —

9:30am-9:45am

Coffee Break

— Symphony Ballroom - 3rd Floor —

9:45am-11:15am

Neonatal Neurology II

— Aria A - 3rd Floor —

Emergency Medicine II - Quality Improvement

— Concerto A/B - 3rd Floor —

Neonatology - Hematology/Cardiovascular

— Overture - 3rd Floor —

Education/Epidemiology

— Rhapsody - 4th Floor —

Critical Care

— Maestro B - 4th Floor —

Child Abuse and Neglect

— Minuet - 4th Floor —

Gastroenterology/Bilirubin

— Maestro A - 4th Floor —

11:30am-12:30pm

Plenary Session I

PLENARY LECTURE

Lynne Mofenson, MD

Reflections on Pediatric HIV Infection: From Epidemic to Elimination

— Overture - 3rd Floor —

12:40pm-1:40pm

Fellows' Clinical Case Presentation Competition

— Overture - 3rd Floor —

Eastern SPR Business Meeting

— Rhapsody - 4th Floor —

1:45pm-2:30pm

Plenary Session II

MENTOR OF THE YEAR

Edmund La Gamma, MD

The Power of the Pen and Other Meaningful Contributions to Research

— Overture - 3rd Floor —

TRAINEE YOUNG INVESTIGATOR PRESENTATIONS: (2:30pm-3:15pm)

Coffee Break (3:15pm-3:30pm)

— Symphony Ballroom - 3rd Floor —

FACULTY YOUNG INVESTIGATOR PRESENTATIONS: (3:30pm-4:15pm)

4:30pm-6:00pm

Neonatal Neurology II - Hypothermia

— Aria A - 3rd Floor —

Neonatology - Infectious Diseases et al.

— Concerto A/B - 3rd Floor —

Neonatology - General

— Overture - 3rd Floor —

Hematology/Oncology

— Rhapsody - 4th Floor —

General Pediatrics II

— Maestro B - 4th Floor —

Behavior and Developmental Pediatrics

— Minuet - 4th Floor —

i.e. Emergency Medicine General

— Maestro A - 4th Floor —

6:00pm-7:30pm

Poster Session III & Reception

— Symphony Ballroom - 3rd Floor —

Sunday, March 22

7:30am-9:00am

Continental Breakfast

— Symphony Ballroom - 3rd Floor —

Poster Session IV

— Symphony Ballroom - 3rd Floor —

9:00am-10:15am

Plenary Session III

PRESENTATION OF THE YOUNG INVESTIGATOR AWARDS

PLENARY LECTURE

Namasyivayam Ambalavanan, MD

Bronchopulmonary Dysplasia: New Insights

— Overture - 3rd Floor —

10:30am-12:30pm

Neonatology - Epidemiology/Follow-Up

— Aria A - 3rd Floor —

Infectious Disease II

— Concerto A/B - 3rd Floor —

Neonatology - Pulmonary/Ventilation

— Overture - 3rd Floor —

Nephrology

— Rhapsody - 4th Floor —

Cardiology

— Maestro B - 4th Floor —

Endocrinology

— Minuet - 4th Floor —

Developmental Biology

— Maestro A - 4th Floor —

Abstracts can be viewed at :

Friday: <https://www.aps-spr.org/regions/ESPR/abstracts/friday.pdf>

Saturday: <https://www.aps-spr.org/regions/ESPR/abstracts/saturday.pdf>

Sunday: <https://www.aps-spr.org/regions/ESPR/abstracts/sunday.pdf>

Friday, March 20, 2015

Poster Session I

**Adolescent Medicine / Allergy / Cardiology
Critical Care / Development/Behavioral
Pediatrics / Neonatal Neurology / Neonatology**

6:00pm-7:30pm

Symphony

- 1 **Evolution of a Long-Acting Reversible Contraceptive (LARC) Service for Adolescents in an Academic Children's Hospital**
Amanda M. Jacobs, Sofya Maslyanskaya, Susan M. Coupey. – Abstract 1
- 2 **Leveraging Adolescent Resources for Contraceptive Access in Pediatric Care Settings**
Uche Onyewuchi, Kathy Tomaszewski, Priya S. Gupta, Natalie Whaley, Anne Burke Burke, Krishna Upadhyya, Maria E. Trent. – Abstract 2
- 3 **Risk Factors for Physical and Sexual Dating Violence Among Teens**
Alexis E. Tchaconas, Sujit Vettam, Majnu John, Andrew Adesman. – Abstract 3
- 4 **Integrating a Youth Development Program in a School Based Health Center: Impact on High Risk Behaviors and Academic Outcomes**
Tosan Oruwariye, Susanne Harnett, Estelle Raboni, Verona Greenland, Alida Quinones-Reyes. – Abstract 4
- 5 **In Their Own Words: Adolescent Male Perspectives on Health Care**
Justin Kopa, Sarah Overholt, Alejandro Luciano, Jenna Scholnick, Neal Hoffman. – Abstract 5
- 6 **Pregnancy, Contraceptive Use and Sexually Transmitted Infections in Adolescent Females with Polycystic Ovary Syndrome**
Sharyn N. Malcolm, Lisa Tuchman, Emma Reese, Veronica Gomez-Lobo. – Abstract 6
- 7 **Health Care Resource Utilization and Costs of Allergic Asthma Vs. Non-Allergic Asthma in Adolescent Patients Within the US**
Tom S. Karagiannis, Susan Gabriel, Yunfeng Li, Huanxue Zhou, Vivian Herrera, Patricia A. Russo, Howard S. Friedman. – Abstract 7
- 8 **Over-The-Counter Testosterone Boosters and Underage Teens: Easy Access and Misinformation Provided By National Retailers**
Maguire Herriman, Laura Fletcher, Andrew Adesman, Ruth Milanaik. – Abstract 8
- 9 **The Association between Serum Micronutrient Levels and Sleep Quality in Adolescents**
Xiaopeng Ji, Jianghong Liu. – Abstract 9
- 10 **How Long Is This Going To Take, Doc? Impact of Wait Time & Length of Stay on Patient Satisfaction and Medication Adherence for Adolescents with Pelvic Inflammatory Disease**
Alexandra Hill, Jennifer Anders, Shang-en Chung, Arlene Butz, Charlotte Gaydos, Rich Rothman, Maria Trent. – Abstract 10
- 11 **Association Between Clinical Shrimp Allergy and Sensitivity To Cockroach and Dust Mite**
Juliana M. Vera, Alyson Smith, Uri Belkind, David Rubin, Paulo Pina. – Abstract 11

- 12 **Clinical Characteristics of Adolescent Patients with Refractory Chronic Idiopathic/Spontaneous Urticaria (CIU/CSU) in Three Phase III Studies with Omalizumab**
Stanely Goldstein, David Skoner, Farid Kianifard, Julie Vu, Meryl Mendelson. – Abstract 12
- 13 **Relationship Between Food Allergy and Depression Among Adolescents in an Urban Community**
Noelle J. Edwards, Patricia Burris-Warmoth, Partha Chatterjee, Vinod Dhar, Susana Rapaport, Won Baik-Han. – Abstract 13
- 14 **Effect of Durations of Deep Hypothermic Circulatory Arrest (DHCA) and Cardiopulmonary Bypass (CPB) on Brain Oxygenation and Outcome in Neonates with Congenital Heart Disease (CHD) Undergoing Cardiac Surgery**
Safwat A. Aly, David Zurakowski, Penny Glass, Kami B. Skurow-Todd, Richard A. Jonas, Mary T. Donofrio. – Abstract 14
- 15 **The Evaluation and Management of Chest Pain in the Pediatric Population in a Community Hospital Emergency Department**
Ahmed Aly, Mohamed Khalifa, Rajesh U. Shenoy. – Abstract 15
- 16 **Closure of the Mitochondrial Permeability Transition Pore (Mtp) in the Neonatal Mouse Heart and Its Effects on Mitochondrial Structure and Function and Cardiac Myocyte Differentiation**
Jayson V. Ligan, George A. Porter. – Abstract 16
- 17 **Low Birth Weight (<2Kg) Neonates with Congenital Heart Disease: Surgical Outcomes from a Dedicated Neonatal Cardiac Program**
Victoria L. Blancha, Jennifer M. Duchon, Brett R. Anderson, Emile Bacha, Ganga Krishnamurthy. – Abstract 17
- 18 **Changes in Photoplethysmographic Signal Characteristics After Surgical Repair of Neonatal Aortic Coarctation**
Lynn C. Palmeri, Cynthia Amirtharaj, Gideon Gradwohl, Meir Nitzan, Yehuda Shapir, Robert Koppel. – Abstract 18
- 19 **Left Ventricular Myocardial Performance Index (LVMPI) Differences in Pediatric Sickle Cell Disease Patients with Pulmonary Hypertension Treated with and without Chronic Transfusion Therapy**
Amanda Cai, Courtney Wein, Amir Jazayeri, Lauren Comegys, Bruce Bernstein, Deepti Raybagkar, Shuping Ge. – Abstract 19
- 20 **Etiologies of Recurrent Pericarditis in the Pediatric Population: A Systematic Review**
Amanda Cai, Michael DelVecchio, Stephen Aronoff. – Abstract 20
- 21 **The Effect of Statin Therapy in Children with Elevated Liver Transaminases**
Matthew M. Demczko, Samuel S. Gidding. – Abstract 21
- 22 **Retrospective Review of Limitations of Care for Inpatients at a Free Standing, Tertiary Care Children's Hospital**
Christopher J. Plymire, Elissa G. Miller, Glenn Stryjewski, Meg Frizzola. – Abstract 22
- 23 **The Value of Walk Rounds for Improving Safety of Tracheostomy Care in Infants**
Janet Lioy, Edward J. Hopkins, Joanne Stow, John Chuo. – Abstract 23
- 24 **Improving Perioperative Communication During Airway Surgery in the Neonate**
Janet Lioy, Hitesh Deshmukh. – Abstract 24
- 25 **Effect of Pre-Hospital Treatment Times on Clinical Outcomes in Pediatric Trauma Patients**
Emilia Connolly, Tim Niiler, Sean Elwell, Richard Kruse, Alfred Atanda Jr. – Abstract 25
- 26 **Acute Kidney Injury in Children with Acute Respiratory Failure**
Sindy Villacres, Shivanand Medar, Scott Aydin. – Abstract 26

- 27 **Free Radical Injury in the Piglet Brain After Hypoxia: Protection by Hypothermia**
Jherna Balany, Shadi Malaeb, Waseem Akhter, Melanie Leong, Maria Delivoria-Papadopoulos. – Abstract 27
- 28 **Effect of Hypothermia on Caspase 3 Activity After Hypoxia-Ischemia in the Newborn Piglet Brain**
Taylor Wheaton, Nandita Mandhani, Shadi Malaeb, Peter Osgood, Maria Delivoria-Papadopoulos. – Abstract 28
- 29 **Basal and Stimulated Levels of Angiopoietin-2 Transcription and Secretion in Human Endothelial Cells**
Richard W. Pierce, Martin S. Kluger, Jordan S. Pober. – Abstract 29
- 30 **Review of Patient-Related Factors Affecting Pediatric Sepsis Illness Severity and Outcome**
Heda R. Dapul, Sireesha Palkamsetti, Mary Rojas, Mara Chavolla-Calderon. – Abstract 30
- 31 **Enterovirus D68: Variable Expression of Severe Disease Presenting to a Pediatric Intensive Care Unit**
Richard L. Lambert, Michael Ryan, Frank A. Maffei. – Abstract 31
- 32 **Effects of Hyperoxia and Caffeine on Inflammatory Mediators in Cord Blood Monocytes**
Suhita Gayen nee Betal, Swati Murthy, Mendira Chawla, Apryle Funderburk, Sam Soundar, Ursula Nawab, Kristin McKenna, Janet Larson, Zubair Aghai. – Abstract 32
- 33 **Short Screening Test for Autism Spectrum Disorders**
L.A. Salisbury, C.D. Hannum, J.D. Nyce, R.C. Sheldrick, E.C. Perrin. – Abstract 233
- 34 **Increased Rates of Injury in Children with Autism Spectrum Disorder**
Kyle R. Smith, Gregory Gorman, Cade Nylund, Apryl Susi, Christine Erdie-Lalena, Elizabeth Hisle-Gorman. – Abstract 34
- 35 **Adverse Childhood Experiences, Literacy and Kindergarten Problems**
Manuel Jimenez, Roy Wade, Yong Lin, Nancy Reichman. – Abstract 35
- 36 **Assessing Community Participation among Children with Developmental Disorders: Analysis of the 2011-2012 National Survey of Children's Health**
Bridget Kiely, Sarah Keim, Andrew Adesman. – Abstract 36
- 37 **Assessing Psychological Stress Experiences in Children with Autism Spectrum Disorder: A DBPNet Study**
Michele C. Laverdiere, Justin Schwartz, Marisa E. Toomey, Ellen J. Silver, Ruth E.K. Stein, Katherine B. Bevans, Christopher B. Forrest, Carole A. Tucker, Carolyn Bridgemohan, Noelle L. Huntington, Nathan J. Blum. – Abstract 37
- 38 **Delayed Identification of Autism Spectrum Disorder in Children Diagnosed with Attention-Deficit/Hyperactivity Disorder**
Amir Miodovnik. – Abstract 38
- 39 **Detecting Young Children with Sleep and Eating Problems**
Ingrid Hastedt, Daryl W. Garfinkel, Radley C. Sheldrick, Ellen C. Perrin. – Abstract 39
- 40 **How Well Does Developmental-Behavioral Screening Identify Previously Unknown Problems in Young Children?**
Radley C. Sheldrick, Ellen C. Perrin, Ana F. El-Behadli, Elizabeth C. Frenette. – Abstract 40
- 41 **Trajectory Altering Events (TAE) Are Associated with Poorer Achievement in Poor Inner-City Youth**
Jennifer M. Handzel, Laura M. Betancourt, Nancy L. Brodsky, Hallam Hurt. – Abstract 41
- 42 **Diversion and Misuse of Stimulant Medication by ADHD Patients: Which Clinical Factors Are Most Concerning To Physicians?**
Natalie Colaneri, Sujit Vettam, Majnu John, Andrew Adesman. – Abstract 42
- 43 **Impact of Physician Training and Prescribing Volume on ADHD Patients Being Educated About Stimulant Diversion & Misuse**
Natalie Colaneri, Sujit Vettam, Majnu John, Andrew Adesman. – Abstract 43
- 44 **Fish Consumption, Sleep and Cognitive Function Among School Children**
Jianghong Liu, Ying Cui, Lezhou Wu, Alex Hanlon, Joe Hibbeln. – Abstract 44
- 45 **Effect of Hypothermia on Src Kinase Activation Following Hypoxia in the Cerebral Cortex of Newborn Piglets**
Lynn Zeits, Shadi Malaeb, Juan Ballesteros, Maria Delivoria-Papadopoulos. – Abstract 45
- 46 **Accuracy of Head Ultrasound with Term-Equivalent Brain MRIs in Premature Infants**
Elizabeth K. Sewell, Yunfei Wang, Khodayar Rais-Bahrami. – Abstract 46
- 47 **Laboratory Predictors of Abnormal Brain Magnetic Resonance Imaging in Infants With Hypoxic-Ischemic Encephalopathy**
Dustin D. Flannery, Rozana Shahidullah, Kathleen S. Schwabenbauer, Zubair H. Aghai. – Abstract 47
- 48 **Effect of Src Kinase and EGFR Kinase Inhibition on Signal Transduction During Hypoxia in the Brain of Newborn Piglets**
Lynn Zeits, Shadi Malaeb, Juan Ballesteros, Carolyn Bergkvist, Maria Delivoria-Papadopoulos. – Abstract 48
- 49 **Resting Energy Expenditure in Infants Undergoing Therapeutic Hypothermia for Hypoxic Ischemic Encephalopathy**
Dalal Abdelgadir, Christopher Tomlinson. – Abstract 49
- 50 **The Effect of Music on Neonatal Sleep-Wake Cycles: Preliminary Results of a Randomized Blinded Crossover Trial**
Adia Y. Stokes, Alexander G. Agthe, Dina E. El Metwally. – Abstract 50
- 51 **BDNF as a Possible Biomarker for Neurodevelopmental Outcomes at 2 Years of Age**
M. C. O'Connor, V. J. Burton, G. Gerner, E. Graham, E. Cristofalo, A. D. Everett, R. Chavez-Valdez. – Abstract 51
- 52 **Clinical Predictors of Abnormal Magnetic Resonance Imaging of Brain in Infants With Hypoxic-Ischemic Encephalopathy**
Kathleen S. Schwabenbauer, Zubair H. Aghai. – Abstract 52
- 53 **WITHDRAWN**
- 54 **Exploring Providers' Goals of Prenatal Counseling To Develop a Visual Aid for Parents**
Srujana Rallabandi, Rita Dadiz. – Abstract 54
- 55 **Genetic Variants of IL1RA Associated with Spontaneous Closure of the Ductus Arteriosus in ELBW Infants**
Lynnette H. Kim, Alexander Feldman, Usama Younis, Umesh Paudel, Lance A. Parton. – Abstract 55
- 56 **Do Genetic Variants of POSTN (Periostin) Increase Susceptibility To BPD?**
Julia Arena, Lynnette H. Kim, Umesh Paudel, Lance A. Parton. – Abstract 56
- 57 **Living with Severe Bronchopulmonary Dysplasia - Parental Views of Their Children's Quality of Life**
Jennifer M. Handzel, Kathleen McFadden, Huayan Zhang, Sara B. DeMauro, Haresh Kirpalani. – Abstract 57

- 58 **Unintended Gastrointestinal Consequences of Sedation Exposure in the Preterm Infant**
Mark T. Astoria, Karen D. Hendricks-Munoz, Leroy R. Thacker.
 – Abstract 58
- 59 **Developmental and Cognitive Outcomes in Early (37- 38 Weeks GA) Versus Late Term (39 - 41 weeks GA) Infants at 2 and 4 Years Old**
Olubunmi Bakare, Lenna Nepomnyaschy, Thomas Hegyi.– Abstract 59
- 60 **Predictors of Acute Kidney Injury in Very Low Birth Weight Infants**
Ankana Daga, Fredrick Dapaah-Siakwan, Sharina Rajbhandari, Casandra Arevalo, Agnes Salvador.
 – Abstract 60
- 61 **Antenatal Steroids Modulate Catecholamine Release in Response To Acute Hypoxia in Mouse Pheochromocytoma Cells**
Priyadarshani Giri, Hazel Villanueva, Marian Evinger.– Abstract 61
- 62 **Profile & Trend of Invasive Fungal Infections (IFI) in a Level III NICU over the Last Two Decades**
Akosua Agyepong, Puneet Arora, Priyam Pattnaik, Babina Nayak, Sunil Krishna, Kim M. Roger.
 – Abstract 62
- 63 **Relationship Between Age of Red Blood Cell (RBC) Units and Respiratory (RESP) and Gastro-Intestinal (GI) Morbidity**
Rachid Benjelloun, Sujit Sheth, Melissa Cushing, Jeffrey M. Perlman.
 – Abstract 63
- 64 **Exclusive Breast Feeding and “Dehydration Fever” in Newborns During the First Days of Life**
Kaitlin McLean, Erik Brandsma, Leena Lari, Judy Saslow, Zubair H. Aghai.
 – Abstract 64
- 65 **Continuous Positive Airway Pressure Versus Mechanical Ventilation on the First Day of Life in Very Low Birth Weight (VLBW) Infants**
Dustin D. Flannery, Elizabeth A. O’Donnell, Mike Kornhauser, Kevin Dysart, Jay S. Greenspan, Zubair H. Aghai.
 – Abstract 65
- 66 **Initial Continuous Positive Airway Pressure in Very Low Birth Weight Infants: Predictors for Failure and Missed Opportunity for Surfactant Therapy**
Elizabeth A. O’Donnell, Michael Kornhauser, Kevin Dysart, Dustin D. Flannery, Jay S. Greenspan, Zubair H. Aghai.
 – Abstract 66
- 67 **Measurement of Four Limb Blood Pressures at Birth and Postnatal Diagnosis of Aortic Arch Anomalies**
Nikhil Patankar, Karthik Kumar, Satyan Lakshminrusimha.– Abstract 67
- 68 **A Survey of the Neonatal Community Regarding Current Practices in the Utilization of Therapeutic Hypothermia for Neuroprotection in Infants with Suspected Hypoxic Ischemic Encephalopathy**
Jennifer A. McGuirl, Deborah Campbell.
 – Abstract 68
- 69 **Risk Factors for Tracheostomy in Extremely Low Birth Weight (ELBW) Infants**
Orly L. Levit, Veronika Shabanova, Matthew J. Bizzarro, Vineet Bhandari.
 – Abstract 69
- 70 **Precision and Accuracy of the New Transonic ELSA Monitor To Quantify Oxygenator Blood Volume (In-Vivo and In-Vitro Studies)**
Mariam M. Said, Gerald T. Mikesell, Oswaldo Rivera, Khodayar Rais-Bahrami.
 – Abstract 70
- 71 **How Do Parents Predict Quality of Life in Neonatology?**
Andreea Gorgos, Shuvo Ghosh, Patricia Riley, Antoine Payot.
 – Abstract 71

7:00am-8:00am

Symphony

- 1 **Elevated Turnover of Adrenal TH mRNA in an Animal Model of Hypoglycemia Associated Autonomic Failure**
Necla Kudrick, Edmund F. La Gamma, Bistra Nankova.– Abstract 72
- 2 **Congenital Hyperinsulinism Caused by Heterozygous Uncoupling Protein 2 (UCP2) Mutations**
Christine T. Ferrara, Kara E. Boodhansingh, Elenora Paradies, Arupa Ganguly, Fiermonte Giuseppe, Ferdinando Palmieri, Charles A. Stanley.
 – Abstract 73
- 3 **Comparative Response To Growth Hormone Therapy in Growth-Hormone-Naïve Patients Based on Diagnosis in the ANSWER Program**
Robert Rapaport, Paul Saenger, Peter A. Lee, Judith L. Ross, Ricardo V. Maamari, Thomas Henschel, John A. Germak.
 – Abstract 437
- 4 **Maternal Obesity Alters Trophectoderm Development**
Tami Stuart, Isaac Sasson, Kathleen O’Neill, Rebecca Simmons.
 – Abstract 75
- 5 **Relationship between Growth Hormone Axis and Pituitary Microadenomas**
Kristina Derrick, Robert Gensure, William Gomes.
 – Abstract 76
- 6 **WITHDRAWN**
- 7 **Ability of Non-invasive Measurements of Cardiometabolic Health in Predicting Racial Differences in the Metabolic Unhealthy Obese Phenotype**
Jason Klein, Patricia Vuguin, Christine B. Sethna, Ronald Feinstein.
 – Abstract 78
- 8 **Which Anthropometric Measurements Are the Best Predictors of Metabolic Syndrome in the Pediatric Population?**
Daniela E. Purice, Adriana E. Groisman-Perelstein, Pamela M. Diamantis, Uri Belkind, Paulo Pina, David H. Rubin.
 – Abstract 79
- 9 **Assessment of IGF-1 Z-Scores in Pre-Pubertal Patients Treated for Growth Hormone Deficiency**
Megan Oberle, Shana McCormack, Adda Grimberg, Vaneeta Bamba.
 – Abstract 80
- 10 **Two Novel Missense Mutations in NPR2 Result in Acromesomelic Dysplasia Maroteaux Type or Impaired Growth: A Family Study with Evidence for an Allelic Dose Effect**
Patrick C. Hanley, Michael A. Levine.
 – Abstract 81
- 11 **Recurrent Pancreatitis in Association with Diabetic Ketoacidosis (DKA)**
Victor S. Harrison, David Langdon.
 – Abstract 82
- 12 **New Onset of Asymptomatic Papilledema in Two Growth Hormone Deficient Patients Treated With Recombinant Growth Hormone**
Lauren A. Kanner, Jason Klein, Howard Pomeranz, Majida Gaffar, Graeme Frank.
 – Abstract 83
- 13 **Experience With an Interdisciplinary Team To Manage Disorders of Sex Development**
Jennifer S. Sarhis, Phyllis W. Speiser, Heather L. Appelbaum, YeouChing Hsu.
 – Abstract 84
- 14 **Timing of Positive Celiac Disease Serology in Subjects with Type I Diabetes Mellitus**
Jessica Kremen, Lisa Swartz Topor, Charlotte M. Boney, Jose Bernardo Q. Quintos.
 – Abstract 85

- 15 **Impact of Distance To Care on Management of Childhood Type 1 Diabetes**
Kristina Malik, Jane Garb, Holley Allen. – Abstract 86
- 16 **Concordance Between Weight-for-Length (WFL) and BMI Under Age 2 Years in a Large, Longitudinal, Multi-Ethnic Cohort**
Sani M. Roy, Jordan G. Spivack, Myles S. Faith, Alessandra Chesi, Jonathan A. Mitchell, Struan F.A. Grant, Babette S. Zemel, Shana E. McCormack. – Abstract 87
- 17 **Burden of Encephalitis in the Pediatric Intensive Care Units in United States**
Dayanand N. Bagdure, Jason W. Custer, Brandon W. Beam, Adnan Bhutta. – Abstract 88
- 18 **Earlier Transfer of Very Preterm Neonates to a Regional Perinatal Center Is Associated with Improved Outcomes**
D. Aboudi, S. Shah, H.L. Brumberg. – Abstract 89
- 19 **Impact of Religious Affiliation and School Tuition on Non-Medical Immunization Exemptions (NME) in Private Schools in California**
Jana Shaw, Cristina Desemone, Robert Bednarczyk, Jessica Nadeau, Erica DeNicola, Louise-Anne McNutt. – Abstract 90
- 20 **Maternal Folate Levels and Child's Metabolic Biomarkers At Birth and in Childhood**
Guoying Wang, Tina L. Cheng, Kamila Mistry, Barry Zuckerman, Xiaobin Wang. – Abstract 91
- 21 **Self-Reported Folic Acid Intake and Plasma Folate Levels in a Sample of Urban Low-Income Mothers**
Guoying Wang, Tina L. Cheng, Kamila Mistry, Barry Zuckerman, Xiaobin Wang. – Abstract 92
- 22 **Objectively Measuring Physical Activity in Early Childhood Using Accelerometers: Are 4 Days Enough?**
Kathleen A. Abreo, Cornelia M. Borkhoff, Laura N. Anderson, Hrishov Sarker, Jonathon L. Maguire, Patricia C. Parkin, Catherine S. Birken. – Abstract 93
- 23 **Contribution of Birth Defects as a Cause of Fetal and Infant Deaths in Delaware**
Kshiti D. Shah, Dana Thompson, Kathleen Stomieroski, Amy Acheson, Deborah B. Ehrenthal, Russell S. Kirby, Louis Bartoshesky, Robert Locke. – Abstract 94
- 24 **Floororientations: An Intervention To Improve Intern Preparation for Inpatient Subspecialty Units**
Stacey Kallem, Hareem Park, Joelle Karlik, Andrew Palladino. – Abstract 95
- 25 **Evaluation of Prioritization Skills in Neonatology Fellowship Trainees**
Carol Lynn O'Dea, Scott A. Lorch, Mark X. Cicero, Newton Buchanan, Roberta L. Hales, Heather M. French. – Abstract 96
- 26 **Pediatric Research and Scholarship Committee: A Single Institution Initiative To Enhance Scholarly Activity of Pediatric Residents**
Sarah Varghese, Juae Cynthia Chang, Sarah Vaiselbuh, Ljumnije Demirovic, Richard Sidlow, Jonathan Blau, Eleny Romanos-Sirakis. – Abstract 97
- 27 **WITHDRAWN**
- 28 **Comparing Peer and Staff Evaluations of Pediatric Residents Using the ACGME Milestones**
Stephanie Buhlig, Jennifer Hepps, Gregory Gorman. – Abstract 99
- 29 **Mentorship and Longitudinal Integrated Clerkships: A Pilot Study**
Allison Gault, Robert Fallar, Cinthia Delarosa, Yasmin Meah, David Thomas. – Abstract 100
- 30 **Preseason Pediatrics: A Preclinical Pediatric Exposure with Residents as Educator-Mentors**
Scott Moerdler, Suzanne Friedman, Alefiyah Malbari, Kathleen Gibbs, Blair Hammond. – Abstract 101
- 31 **Visual Assessment of the Infant Larynx by Neonatology Fellows and Attendings**
Megan M. Gray, Anne Ades. – Abstract 102
- 32 **Effectiveness of Using a Multimodal Educational Approach As a Resident Initiated Global Health Project**
Smitha R. Mathew, Alexandra Vinci, Paul Lee, Arsenia Asuncion. – Abstract 103
- 33 **Evaluation of Simulated Hand-Offs from Pediatric Residents To Faculty Using SBAR**
Kim Derespina, K. Fenton, R. Blair, D. Grossman, C. Messina, R. Panesar. – Abstract 104
- 34 **Effects of an Educational Intervention on Pediatricians' Knowledge and Perceptions of Healthcare Costs and Value**
Jennifer A. Jonas, Jeanine C. Ronan, Evan S. Fieldston. – Abstract 105
- 35 **Oral Presentations: Do One, See Yourself Do One, Do One Better**
Katherine Hodock, Steven Eagle. – Abstract 106
- 36 **WITHDRAWN**
- 37 **Development of a Resident Education Program To Improve Pediatric Skin and Wound Care**
Mary Curtin, Vita Boyar. – Abstract 108
- 38 **Lactation Education in MSIII- A Pilot Study of a Novel Education Tool**
Noeet Elitsur, Roger Edwards, Rohith Vallu, Krissy Mainello, Jessica Davidson, Maria Blanco, MaryAnn Volpe. – Abstract 109
- 39 **Glomerular Hyperfiltration in Autosomal Dominant Polycystic Kidney Disease: A Retrospective Cohort Study**
Rasheda Z. Amin, Monica T. Cramer, Robert J. McCarter, Lisa M. Guay-Woodford. – Abstract 110
- 40 **Using Social and Economic Barriers To Predict Pediatric Renal Transplant Access and Success**
Lena E. Gottesman, Hanan Tawandrous, Chris Feudtner. – Abstract 111
- 41 **Artificial Skin Assay Predicts Phototherapy May Be Enhanced Through Optimization of the Angle of Incident Light**
Donna J. Brezinski, Shreyas Renganathan, Chi N. Ta, Gary E. Gilbert. – Abstract 112
- 42 **Risk of Transfusion-Associated Necrotizing Enterocolitis (TANEC) per pRBC Transfusion in ELBW Infants**
Jessica Dodge, Naveed Hussain. – Abstract 113
- 43 **Examining Vasopressor Use in the Hypotensive Premature Neonate**
Deidre M. St. Peter, Christiana L. Gandy, Suma B. Hoffman. – Abstract 114
- 44 **Ultrasound for Central Vascular Catheter and Endotracheal Tube Position in the NICU- A Pilot Study**
Samuel Ajayi, David Saul, Mindy Horrow, David L. Schutzman. – Abstract 115
- 45 **Mean Arterial Blood Pressure (MAP) and Regional Perfusion Patterns as a Predictor of Intraventricular Hemorrhage (IVH) and Death**
Suma B. Hoffman, Narendra Shet, Larry S. Magder, Rose M. Viscardi. – Abstract 116

- 46 **Cerebral and Renal Perfusion Trends Over Time in Premature Neonates**
Suma Hoffman, Larry S. Magder, Rose M. Viscardi. – Abstract 117
- 47 **Impact of Maternal Factors on Circulating Cord/Peripheral Blood Cytokines and Stem Cells (SC) in Preterm Infants (PT)**
Judith S. Mercer, Vineet Bhandari, Debra A. Erickson-Owens, Betty R. Vohr, Richard Tucker, William Oh, James F. Padbury. – Abstract 118
- 48 **Delayed Cord Clamping at Birth Improves Motor Scores at 18 To 22 months Corrected Age: A Randomized Controlled Trial**
Judith S. Mercer, Debra A. Erickson-Owens, Betty R. Vohr, Richard Tucker, William Oh, James F. Padbury. – Abstract 119
- 49 **Short-Course, Low- Dose Postnatal Betamethasone in ELBW babies: A Pilot Study Power Analysis**
Sanjeet K. Panda, Yuanyi Li, Vanessa V. Mercado, Edmund F. La Gamma. – Abstract 120
- 50 **Impact of Indomethacin Prophylaxis on Clinical NICU Outcomes in ELBW Preterm Infants**
Sean M. Bailey, Elaine Carelus, Rebecca Zarchin, Pradeep V. Mally. – Abstract 121
- 51 **Effect of Hypothermia on Na⁺, K⁺ ATPase Enzyme Activity in Newborn Piglet Brain Following Hypoxia**
Jherna Balany, Shadi Malaeb, Panagiotis Kratimenos, Maria Delivoriotou, Papadopoulos. – Abstract 122
- 52 **Does Post-Pyloric Feeding Improve Respiratory Outcomes in Preterm Infants with Respiratory Failure?**
Swati Murthy, Zubair Aghai. – Abstract 123
- 53 **Efficacy of Surfactant in Hypoxemic Respiratory Failure in Late Preterm and Term Neonates**
Vikramaditya Dumpa, Indirapriyadarshini Avulakunta, Satyan Lakshminrusimha. – Abstract 124
- 54 **Delivery Room Prophylactic Surfactant (PS) at 27-28 Weeks: Is It Necessary?**
Zoe O. VanOrden, Meredith L. Monaco-Brown. – Abstract 125
- 55 **Essential Care for Small Babies (ECSB) Improves Knowledge, Performance, and Confidence in Caring for Small Babies**
Sara Berkelhamer, Carl Bose, Sherri Bucher, Marsha Campbell-Yeo, Douglas McMillan, Susan Niermeyer, Nalini Singhal. – Abstract 126
- 56 **Dysregulated Endothelin Signaling Persists After Neonatal Hyperoxia and Is ROS-Dependent**
Sara K. Berkelhamer, Kathryn N. Farrow, Paul T. Schumacke. – Abstract 127
- 57 **Delivery After Midnight Is Associated with Increased Risk-Adjusted Odds of Severe IVH in VLBWs**
E. A. Jensen, S. A. Lorch. – Abstract 128
- 58 **Effect of Electronic Medical Record Implementation on Medication Errors in a Tertiary Care NICU**
Kabir M. Abubakar, Anthonia Umeh, Jeanne Rorke. – Abstract 129
- 59 **Outcome of Room Air Resuscitation in Very Low Birthweight Infants**
Maheswari Arumugam, Mujahid Anwar, Shakuntala Chandra. – Abstract 130
- 60 **Frequent Training Is a Key Element To Maintaining Neonatal Resuscitation Skills**
Heideh H. Matterson, Demian Szyld, Brad R. Green, Heather Howell, Martin V. Pusic, Pradeep V. Mally, Sean M. Bailey. – Abstract 131
- 61 **Rate of Neonatal Resuscitation Skill Decay Using a Simulation-Based Deliberate Practice and Mastery Learning Booster Session Model**
Heideh H. Matterson, Demian Szyld, Brad Green, Heather Howell, Pradeep V. Mally, Sean M. Bailey. – Abstract 132
- 62 **A Quality Improvement Initiative To Improve Rates of Normothermia in the Delivery Room Using a Checklist**
Alexandra Vinci, Shahidul Islam, Nazeeh Hanna, Amrita Nayak. – Abstract 133
- 63 **Parental and Staff Perspectives of Minor Increase Over Minimal Risk Without Direct Patient Benefit Research in the NICU**
Christina Freibott, Ursula Guillen, Amy Mackley, Robert Locke. – Abstract 134
- 64 **Correlation of Birth Weight and Placental Weight Ratio To Postnatal Cardiac Function in Intrauterine Growth Restricted Infants**
Michael M. Henry, Clarissa Aldape, Simrun Kaur, Xaio Yang Zhang, Nayaab Khawar, Manoj Chhabra, Carolyn Salafia, Pramod Narula, Ashraf Gad. – Abstract 135
- 65 **Parental Stress Before and After Skin To Skin Contact in the NICU**
Natalia A. Isaza, Khodayar Rais-Bahrami, Mariam Said, Mauricio Cabrera. – Abstract 136
- 66 **Impact of Pasteurization on the Oligosaccharide Concentration of Human Breast Milk**
Sarah A. Nitka, Aimee R. Herdt, Javier Pacheco-Quinto, Caryn Peters, Nancy Mejias-Cepeda, Annemarie Stroustrup, Robert D. Voyksner, Denise C. Hassinger. – Abstract 137
- 67 **Combined Effect of Hypoxic Ischemic Encephalopathy and Controlled Hypothermia on Ampicillin Pharmacokinetics in Neonates**
Keri N. Fugarolas, Ogechukwu R. Menkitti, Wayne II S. Moore, Robert W. Mason, Jeffrey J. Cies. – Abstract 138
- 68 **Predictors of Term Infants' Birth Weight in Pregnant Teenagers**
Maheswari Ekambaram, Johelin De Freitas, Sharina Rajbhandari, Jessica Geaney, Matilde Irigoyen. – Abstract 139
- 69 **Compliance with Appropriate Duration of Antibiotic Therapy in NICU and Its Effect on Necrotizing Enterocolitis and Nosocomial Infections**
Chintan Gandhi, Diane Chiappi, Mark Hiatt, Shakuntala Chandra. – Abstract 140
- 70 **Epidemiology of Apnea, Bradycardia, and Desaturation in Late Preterm and Full Term Infants**
Christina M. Freiburger, Lauren Veit, Sagori Mukhopadhyay, Lawrence M. Rhein. – Abstract 141
- 71 **Maternal Third Trimester Bmi Is Associated With Late Term Birth and Neonatal Morbidity**
Amruta Bamanikar, Ronald Arevalo, Cecilia Godoy, Jeffrey Le, Megan Kaknis, Paulo Pina, David Rubin. – Abstract 142

Adolescent Medicine

- 8:00am-9:30am** **Rhapsody**
Moderators: Danielle Laraque
- 8:00am** **The Impact of State Laws Regarding Contraception Access and Use by Teen-Age Girls in the United States**
Amanda Bader, Sujit Vettam, Andrew Adesman. – Abstract 143
- 8:15am** **Prevalence of Male Sexual Victimization and Association with Adverse Health Outcomes**
Maria F. Ramirez-Tovar, Janine Clark-Adjo, Paulo Pina, David Rubin.
 – Abstract 144
- 8:30am** **Assent in Pediatric Clinical Trials: An International Children's Advisory Network (iCAN) Survey**
Charles Thompson, Sharon Smith, Philip Sjostedt, Donald Lombardi.
 – Abstract 145
- 8:45am** **Risk of Incident Diabetes Following Initiation of Second-Generation Antipsychotics among Medicaid-Enrolled Youth**
David M. Rubin, Amanda R. Kreider, Meredith Matone, Yuan-Shung Huang, Chris Feudtner, Michelle E. Ross, Russell Localio.
 – Abstract 146
- 9:00am** **Gender Differences in Risk of Weapon-Carrying By Adolescents Who Are Victims of Bullying**
Tammy Pham, Majnu John, Lana Schapiro, Andrew Adesman.
 – Abstract 147
- 9:15am** **Relative Risks of Depression and Suicidal Tendency Among Victims of School- and Electronic-Bullying With Co-Risk Factors**
Tammy Pham, Sujit Vettam, Majnu John, Andrew Adesman.
 – Abstract 148

Emergency Medicine-Lung/Trauma

- 8:00am-9:30am** **Aria A**
Moderators: Ruth Abaya and Kirsten Bechtel
- 8:00am** **Accuracy of Point-of-Care Lung Ultrasound for Diagnosis of Acute Chest Syndrome in Pediatric Patients with Sickle Cell Disease and Fever**
Dina D. Daswani, Vaishali P. Shah, Jeffrey R. Avner, Deepa G. Manwani, Jessica Kurian, Joni E. Rabiner. – Abstract 149
- 8:15am** **The Practice of Obtaining a Chest X-ray in Pediatric Patients Presenting With Their First Episode of Wheezing in the Emergency Department: A Survey of Attending Physicians**
Nishit Patel, Ameer Hassoun, Jennifer Chao. – Abstract 150
- 8:30am** **What Is "Asthmonia"?**
Anna Weingarten, Christine H. Mulvey, Sharon R. Smith.
 – Abstract 151
- 8:45am** **A Comparison of Analgesic Administration Between Pediatric and Adult Trauma Patients Presenting to an Emergency Department in Central Pennsylvania**
Bai Yi Ted Chen, Alina Schmidt, Nisha Hariharan, Robert Olympia.
 – Abstract 152
- 9:00am** **The Impact of a Displayed Checklist on Pediatric Trauma Resuscitations**
Erin Hulfish, Glenn Stryjewski, Maria Carmen G. Diaz, Heather Sobolewski, Heather Kulp, Megan Feick, Emily Murphy.
 – Abstract 153
- 9:15am** **Patients at High Risk for Intervention for Pediatric Traumatic Liver Injury**
Katie A. Donnelly, Karen O'Connell. – Abstract 154

General Pediatrics I

- 8:00am-9:30am** **Maestro B**
Moderators: John Rausch
- 8:00am** **A Practice-Based Randomized Trial of a Shared Decision Making Portal in Childhood Asthma**
A. Fiks, S. Mayne, D. Karavite, A. Suh, R. Localio, M. Ross, R. Grundmeier. – Abstract 155
- 8:15am** **Residential and School Proximity To Major Roadways and Asthma Morbidity in the School Inner-City Asthma Study**
Marissa Hauptman, Jonathan M. Gaffin, Carter R. Petty, Diane R. Gold, Wanda Phipatanakul. – Abstract 156
- 8:30am** **Evaluating the Impact of IT Tools To Support the Asthma Medical Home**
L. Adriana Matiz, Laura Robbins-Milne, M. Christine Krause, Patricia J. Peretz, John Rausch. – Abstract 157
- 8:45am** **Factors Associated With Duration of Hospitalization in Children With Non-Severe, Acute Bronchiolitis**
Jamie M. Pinto, Janet L. Schairer, Anna Petrova. – Abstract 158
- 9:00am** **A Pilot Randomized Trial of a Video Decision Aid To Facilitate Early Intervention Referrals**
Manuel Jimenez, Nathalie DuRivage, Andrew Suh, Oryisia Bezpalko, Nathan Blum, Alexander Fiks. – Abstract 159
- 9:15am** **The Feasibility of a Positive Parenting Text Message Program in an Inner-City Pediatric Clinic**
Stacy Ellen, Falguni Patel, Bruce Bernstein, Maria McColgan, Lee Pachter.
 – Abstract 160

Infectious Disease I

- 8:00am-9:30am** **Minuet**
Moderators: Melanie Wellington
- 8:00am** **A Rabbit Model To Study the Pathogenesis of Pediatric Central Nervous System Tuberculosis**
Elizabeth W. Tucker, Supriya Pokkali, Zhi Zhang, Elizabeth Nance, Courtney Robertson, Sanjay Jain, Sujatha Kannan. – Abstract 161
- 8:15am** **Inter-alpha Inhibitor Protein Is Superior To C-reactive Protein as a Biomarker To Differentiate Necrotizing Enterocolitis from Spontaneous Intestinal Perforation**
Birju A. Shah, Paula Krueger, Yow-Pin Lim, Surendra Sharma, James Padbury. – Abstract 162
- 8:30am** **Escherichia coli Inhibition by Commensal Bacteria of the Female Genital Tract**
Christopher G. Manschreck, Betsy C. Herold. – Abstract 163
- 8:45am** **The Effects of Neuropeptide Substance P and NK1R Antagonist on Program Death Receptor-1 Expression in CD4+ T-cells**
Caleb Seufert, Serguei Spitsin, Florin Tuluc, Angela Winters, Steven D. Douglas. – Abstract 164
- 9:00am** **Trends in Antimicrobial Susceptibility of E. Coli Causing Community Onset UTI in Children**
Jonathan M. Beus, Carter L. Cowden, Kaede V. Sullivan, Daniele Dona, Jeffrey S. Gerber. – Abstract 165
- 9:15am** **TLR-7/8 Agonists and Bacille Calmette Guerin (BCG) Activate Robust Cytokine Production in Preterm Cord Blood**
Annette Scheid, David J. Dowling, Ilana Bergelson, Matthew A. Pettengill, Helen Christou, Tobias R. Kollmann, Ofer Levy.
 – Abstract 166

Neonatal Neurology I

8:00am-9:30am

Concerto AB

Moderators: *Maria Delivoria-Papadopoulos*

- 8:00am Pilot Translational Study: Utility of Neuroantibody (NAb) Biomarkers in Hypoxic-Ischemic Encephalopathy (HIE)**
Meredith L. Monaco-Brown, Dana Price, Michael J. Horgan, Hassan A. El-Fawal. – Abstract 167
- 8:15am Recurrent Hypoglycemia Affects the Post-Transcriptional Regulation of the Adrenal Tyrosine Hydroxylase (TH) Gene**
Juhye Lena Kim, Necla Kudrick, Edmund F. La Gamma, Bistra Nankova. – Abstract 168
- 8:30am Serum Biomarkers of Neuronal Injury in Newborns Who Where Evaluated for Hypoxic Ischemic Encephalopathy But Did Not Qualify for Head Cooling, Compared To Normal Newborns: A Pilot Study**
Uday Patil, Pradeep Mally, Elena Wachtel. – Abstract 169
- 8:45am Effects of Hypoxic-Preconditioning on AIF-Mediated Apoptotic Pathway in Hypoxic-Ischemic Piglet Model**
Kashish Mehra, Tahlar McIntosh, Maria Delivoria-Papadopoulos, Jahan Ara. – Abstract 170
- 9:00am Effect of Hypoxic-Preconditioning on AIF Mitochondrial-Nuclear Translocation in Newborn Piglet Brain**
Sharina Rajbhandari, Tahlar McIntosh, Geoffrey Bajwa, Maria Delivoria-Papadopoulos, Jahan Ara. – Abstract 171
- 9:15am Effect of Hypoxia on Second Mitochondria-derived Activator of Caspase (Smac) Protein in the Cytosolic Fraction of the Cerebral Cortex of Newborn Piglets**
Emmanuelle Topiol, Panagiotis Kratimenos, Amit Jain, Shadi Malaeb, Maria Delivoria-Papadopoulos. – Abstract 172

Neonatology - Breast Milk

8:00am-9:30am

Overture

Moderators: *Heather Brumberg*

- 8:00am Effects of Donor Breast Milk Feedings on Growth and Early Neurodevelopmental Outcomes in Preterm Infants**
Laura Madore, Tina Jumani, Allison Dengos, Sarbattama Sen. – Abstract 173
- 8:15am Do VLBW Infants on an Exclusive Fortified Human Milk Diet Achieve Adequate Growth?**
Christine Ennis, Deborah Tuttle, Haritha Vellanki, Amy Mackley, Robert Locke. – Abstract 174
- 8:30am Optimal Timing and Sex Specific Responses To Olfactory Stimulation with Mother's Own Milk To Decrease the Time To Full Oral Feeds in Premature Infants**
Jessica Davidson, Jooyeon S. Hwang, Mallory Kosow, Jill L. Maron. – Abstract 175
- 8:45am Optimizing Fat Delivery Methods in Continuous Enteral Feeding of Expressed Breast Milk To Neonates**
Khaled M. Abdelrahman, Amy B. Hair, Keli M. Hawthorne, Steven A. Abrams. – Abstract 176
- 9:00am Maternal Dietary Quality Affects Breast Milk Composition**
Annie Penfield-Cyr, Patoula G. Panagos, Nitin Shivappa, Michael D. Wirth, James R. Hebert, Sarbattama Sen. – Abstract 177
- 9:15am Increased Bilirubin Readmissions Associated With Changes in Breast Feeding Rate**
Daniel Ruderfer, Smitha Mathew, Alena Connelly, Kalgi Mody, Warren Rosenfeld. – Abstract 178

Pulmonology

8:00am-9:30am

Maestro A

Moderators: *Zubair Aghai*

- 8:00am Genetic Variation of Interleukin13 Gene Is Associated with Bronchopulmonary Dysplasia in Extremely Low Birth Weight Infants**
Umesh Paudel, Alex Feldman, Usama Younis, Lynnette H. Kim, Lance A. Parton. – Abstract 179
- 8:15am Heme Oxygenase (HO)-1 Regulates Mitochondrial Function Leading To Iron Accumulation**
Anna V. Hoplamazian, Ping La, Phyllis A. Dennery. – Abstract 180
- 8:30am Premature Children Have Dysfunctional Airway Cytokine Responses To Rhinovirus and Respiratory Syncytial Virus**
Gustavo Nino, Krishna Pancham, Shehlanoor Huseni, Geovanny Perez. – Abstract 181
- 8:45am Apnea Management in the Outpatient Setting: Is There a Role for Polysomnograms**
Serena Haver, Annelise Chaparro, Caitlin E. Raimondi, Stefanie Griglak, Lawrence M. Rhein. – Abstract 182
- 9:00am High Dose of Vitamin D Decreases Lung Alveolarization in a Rat Model of LPS and Hyperoxia-Induced Lung Injury**
Deepthi Alapati, Suhita Gayen nee Betal, Mendira Chawla, Avani Vachhani, Dalal Taha, Ursula Nawab, Kristin Mckenna, Swati Murthy, Janet Larson, Zubair H. Aghai. – Abstract 183
- 9:15am Caffeine Modulates Hyperoxia Induced Angiogenesis in Newborn Mice**
Vikramaditya Dumpa, Huamei Wang, Lori Nielsen, Vasanth H.S. Kumar. – Abstract 184
- 9:30am Break**

Saturday, March 21, 2015 Platform Session

Child Abuse and Neglect

9:45am-11:15am

Minuet

Moderators: *Gunjan Kamdar*

- 9:45am Factors Associated with Discharge from the Emergency Department Following Diagnosis of Physical Abuse in Young Children**
M. Katherine Henry, Joanne N. Wood, Kristina B. Metzger, Konny H. Kim, Chris Feudtner, Mark R. Zonfrillo. – Abstract 185
- 10:00am County-Level Poverty and Child Abuse Fatality Rates in the United States**
Caitlin A. Farrell, Eric W. Fleegler, Celeste R. Wilson, Cindy W. Christian, Lois K. Lee. – Abstract 186
- 10:15am Characteristics of Long Bone Fractures in Children with Medical Conditions Associated with Osteopenia**
Kristine Fortin, Gina Bertocci, Jennifer Nicholas, Soyang Kwon, Mary Clyde Pierce. – Abstract 187
- 10:30am Development of a Checklist To Evaluate EMS Providers' Ability To Detect Child Abuse**
Aimee Alphonso, Gunjan Tiyyagura, Kyle Bilodeau, Marc Auerbach, Kirsten Bechtel. – Abstract 188
- 10:45am Understanding EMS Providers' Experiences with Child Abuse and Neglect (CAN)**
Gunjan Tiyyagura, Marcie Gawel, Jeannette Koziel, Aimee Alphonso, Kyle Bilodeau, Kirsten Bechtel. – Abstract 189
- 11:00am A National Survey of Practice Patterns in the Management of Children with Normal Neurological Exam Being Evaluated for Child Abuse**
Huma Shaikh, Brian Wrotniak, Paula Mazur. – Abstract 190

9:45am-11:15am

Maestro B

Moderators: Lyn Quintos-Alagheband

- 9:45am Delirium in Critically Ill Children**
Abigail G. Kerson, Chani Traube. – Abstract 191
- 10:00am Respiratory Depression Detected by Capnography: Are Children Being Safely Monitored While Recovering from Anesthesia?**
Melissa L. Langhan, Lance Lichtor. – Abstract 192
- 10:15am Pediatric Residents' Competency and Comfort for Decisions Regarding Fluid Administration in Sick Children**
Kavita Morparia, Julie Berg, Sonali Basu. – Abstract 193
- 10:30am Effect of Hypoxia on Long-Term EGFR Activation Following Src Kinase Inhibition in the Cerebral Cortex of Newborn Piglet**
Lynn E. Zeits, Shadi Malaeb, Juan Ballesteros, Maria Delivoria-Papadopoulos. – Abstract 194
- 10:45am Successful Elements for Creating a Neonatal Airway Emergency Response Team At a Major Referral Children's Hospital**
Janet Liroy, Hitesh Deshmukh, Leane Soorikian. – Abstract 195
- 11:00am Is a Haptic-Based Simulation Interface More Effective Than Computer Mouse-Based Interface for Neonatal Intubation Skills-Training?**
Julie I. Leviter, Marc Auerbach, Candace N. Mannarino, Sweta Bhargava, Anup Agarwal. – Abstract 196

Education/Epidemiology

9:45am-11:15am

Rhapsody

Moderators: Gary Emmett

- 9:45am Resident Documentation of Social Determinants of Health: Effects of a Teaching Tool**
Miliani Patel, Jenna Scholnick, Tanya White-Davis, Eleanor Bathory, Sandra Braganza. – Abstract 197
- 10:00am Human Sex Trafficking Education in Healthcare: Evidence for a Novel Free Online Curriculum**
Kanani E. Titchen, Suzanne L. Harrison, Jessica DeLeon, Holly G. Atkinson. – Abstract 198
- 10:15am Evaluation and Optimization of Resident Perceptions in Screening for Postpartum Depression**
Emmanuelle S. Topiol, Shareen Kelly, Bruce Bernstein, Jodi Schaffer, Jeremiah Goldstein. – Abstract 199
- 10:30am The Effect of Team Care Plan Meetings on Resident Education in the Emergency Department**
Matthew Kusulas, Margarita Lorch, Arezoo Zomorrodi. – Abstract 200
- 10:45am Bringing Care Closer To Home: A Cluster Randomized Trial of the Impact of Newborn Infection Management At Health Posts on Neonatal Mortality in Rural Ethiopia**
Tedgabe Degefie Hailegebriel, Brian E. Mulligan, Simon Cousens, Berket Mathewos, Stephen Wall, Abeba Bekele, Jeanne Russell, Deborah Sitrin, Biruk Tensou, Joy Lawn, Joseph de Graft Jhonson, Hailemariam Legesse, Assaye Kassie, Sirak Hailu, Bogale Worku, Abdullah H. Baqui. – Abstract 201
- 11:00am Congruence of Parental Genomic Variation By Country and Self-Report Race and Ethnicity in Ongoing Maternal Child Genomic Studies**
Sahel Hazrati, Kathi Huddleston, Alma C. Fuller, Wendy S. Wong, John E. Niederhuber. – Abstract 202

Emergency Medicine - Quality Improvement

9:45am-11:15am

Concerto AB

Moderators: Steven Rogers

- 9:45am Reducing Unnecessary Radiation Exposure in Children Presenting to a Military Emergency Department with Head Injury - A Resident QI Project**
Katherine M. Ottolini, Muoy Lim, Robert Kurlantzick. – Abstract 203
- 10:00am Infant CPR Quality in Pediatric Emergency Department: Adherence To 2010 AHA Guidelines**
Sweta Bhargava, Marcie N. Gawel, Yedidya M. Ben-Avie, Douglas A. Streat, Marc A. Auerbach. – Abstract 204
- 10:15am Effectiveness of High Fidelity Simulation on Clinical Application of the Pecarn Head Trauma Rule**
Son H. McLaren, Ilana Harwayne-Gidansky, Kristen Critelli, Jennifer Garnett, Kevin Ching. – Abstract 205
- 10:30am Does the Role of a Rapid Triage Provider Improve Pain Control in an Academic Pediatric Emergency Department?**
Jillian S. Savage, Andrew D. DePiero. – Abstract 206
- 10:45am Improvement of Door To Doctor Time in Patients With Severe Sepsis By Using Standardized Triage Screening in Pediatrics**
Alena Connelly, Jessica C. Chang, Tanya Mokhateb-Rafii, Claudia L. Thomas, Robert A. Asselta, Maria Lyn Quintos-Alagheband. – Abstract 207
- 11:00am Escalating Mental Healthcare in Pediatric Emergency Departments**
Steven C. Rogers, Christine H. Mulvey, Jesse Sturm. – Abstract 208

Gastroenterology/Bilirubin

9:45am-11:15am

Maestro A

Moderators: Sean Bailey

- 9:45am Intestinal Barrier Function in Preterm Infants: Relationship To Feeding and Antibiotic Exposure**
Bushra Saleem, Rose M. Viscardi, Alessio Fasano, Laurence S. Magder, Jonathan B. Meddings, Shiv Kapoor, Adora Okogbule-Wonodi. – Abstract 209
- 10:00am The Relationship Between Psychological Distress and the Severity of Inflammatory Bowel Disease in Adolescents**
Colleen A. Nugent, Peter S. Martin, Chang-Xing Ma, Robert D. Baker, Susan S. Baker. – Abstract 210
- 10:15am Intestinal Expression of microRNA-17 Is Significantly Increased in Human Neonates with Surgical Necrotizing Enterocolitis**
Anthony G. Pompa, Jacqueline Ho, Jay K. Kolls, Misty Good. – Abstract 211
- 10:30am Choline Reduces Bilirubin Inhibition of L1 Cell Adhesion Molecule (L1) Mediated Neurite Outgrowth**
Eric M. Ly, Gail Cameron, Ningfeng Tang, Min He, Cynthia F. Bearer. – Abstract 212
- 10:45am Unconjugated Hyperbilirubinemia and Retinopathy of Prematurity in Premature Infants**
Srujana Rallabandi, Hongyue Wang, Sanjiv B. Amin. – Abstract 213
- 11:00am A Prospective Observational Pilot Study Analyzing Variation in Irradiance Administered During Phototherapy**
Sean M. Bailey, Karen Yan, Rebecca Zarchin, Martha Caprio, Pradeep V. Mally. – Abstract 214

Neonatal Neurology II

9:45am-11:15am

Aria A

Moderators: Cynthia Bearer and Maria Delivoria-Papadopoulos

- 9:45am Effect of Scr Kinase Inhibition on the Expression of Second Mitochondrial Activator of Caspase (smac) Protein After Hypoxia in the Piglet Brain**
Panagiotis Kratimenos, Nandita Mandhani, Waseem Akhter, Jane McGowan, Maria Delivoria-Papadopoulos. – Abstract 215
- 10:00am Effect of Concurrent Hypothermia and Inhibition of Caspase-9 on Caspase-3 Activity after Hypoxia-Ischemia in the Cerebral Cortex of Newborn Piglets**
Nandita Mandhani, Shadi Malaeb, Tahlar McIntosh, Siba A. Islam, Maria Delivoria-Papadopoulos. – Abstract 216
- 10:15am Choline Ameliorates Deficits in Balance Caused By Acute Third Trimester Equivalent Ethanol Exposure**
Cynthia F. Bearer, Kristin A. Wellmann, Ningfeng Tang, Min He, Sandra M. Mooney. – Abstract 217
- 10:30am Choline Ameliorates Ethanol Induced L1 Cell Adhesion Molecule Dysfunction *In Vivo***
Ningfeng Tang, Min He, Cynthia F. Bearer. – Abstract 218
- 10:45am Early Systemic Inflammation and Risk for Positive Autism Spectrum Disorder Screening**
Carmina Erdei, Robert M. Joseph, Raina N. Fichorova, Elizabeth N. Allred, Janice Ware, T. Michael O'Shea, Karl C.K. Kuban, Olaf Dammann, Alan Leviton. – Abstract 219
- 11:00am Continuous Capnography (End Tidal CO₂) Monitoring During Neonatal Resuscitation**
Praveen Chandrasekharan, Munmun Rawat, Jayasree Nair, Sylvia Gugino, Carmen Koenigsknecht, Daniel Swartz, Payam Vali, Bobby Mathew, Satyan Lakshminrusimha. – Abstract 220

Neonatology - Hematology/Cardiovascular

9:45am-11:15am

Overture

Moderators: Jonathan Mintzer

- 9:45am Defining Hypotension in Premature Neonates: Is 30 Better?**
Deidre M. St. Peter, Christiana L. Gandy, Natalie L. Davis, Suma B. Hoffman. – Abstract 221
- 10:00am Effects of Hematocrit Levels on Cerebral, Renal, and Splanchnic Oxygen Extraction in Very Low Birth Weight Neonates: Expanding the Scope of Near-Infrared Spectroscopy (NIRS)**
Jonathan P. Mintzer, Boriana Parvez, Gad Alpan, Edmund F. La Gamma. – Abstract 222
- 10:15am Delayed Umbilical Cord Clamping Reduces the Need for Red Blood Cell Transfusions in Infants < 1500 Grams**
Stephen Pearlman, Jeffrey Bolstridge, Tracy Bell, Barbara Dean, Amy Mackley, Gina Moore, David Paul, Cheryl Swift, Dina Viscount. – Abstract 223
- 10:30am Effects of RBC Storage on Iron and Inflammatory Cytokines in VLBW Infants (BW <1250g)**
Tamara G. Kalhan, Eldad A. Hod, Rakhee Bowker, Sudha Kashyap. – Abstract 224
- 10:45am Effect of Blood Transfusions on Intermittent Hypoxia**
Kelley Z. Kovatis, Juliann M. Di Fiore, Richard J. Martin, Haresh Kirpalani. – Abstract 225
- 11:00am Reducing Radiation Exposure and Improving X-Ray Quality in the NICU**
Christine Catts, Linda Levy, Kevin Graff, Paresh Pandit. – Abstract 226

Saturday, March 21, 2015

Plenary Session I

11:30am-12:30pm

Overture

Moderator: George Porter

- 11:30am Plenary Lecture – Reflections on Pediatric HIV Infection: From Epidemic to Elimination**
Lynne Mofenson – National Institute of Child Health and Human Development, Rockville, MD

Fellows' Clinical Case Presentation Competition

12:40pm-1:40pm

Concerto A/B

We are happy to announce that back after last year's success is the lunch time Clinical Case Presentation Competition session. A total of 3 unknown cases will be presented, and an award for best case presentation will be announced Sunday morning.

Moderator: Kirsten Bechtel

Finalists:

- Carlos Oliveira, MD, Yale New Haven Children's Hospital, New Haven, CT
Michael Favara, DO, alDupont Hospital for Children, Wilmington, DE
Michele Gortakowski, MD, Baystate Medical Center, Springfield, MA

Plenary Session II Mentor of the Year

1:45pm-2:30pm

Overture

- 1:45pm Mentor of the Year Presentation
The Power of the Pen and Other Meaningful Contributions to Research**
Edmund La Gamma – The Regional Neonatal Center at Maria Fareri Children's Hospital, Valhalla, NY

Plenary Session II Trainee Young Investigators

2:30pm-3:15pm

Overture

Moderator: George Porter and Joseph Bliss

- 2:30pm Hypoglycemia Due To Lower Threshold of Glucose-Stimulated Insulin Secretion in Phosphoglucosylase 1 Deficiency**
Amanda M. Ackermann, Changhong Li, Hudson H. Freeze, Can Ficioglu, Klaus H. Kaestner, Charles A. Stanley. – Abstract 227
- 2:45pm Expression of Focal Adhesion Kinase (FAK)-Src-Paxillin System and Its Association with Disease Clinical Outcome in Advanced Stage Neuroblastoma**
Panagiotis Kratimenos, Ioannis Koutroulis, Vasiliki Syriopoulou, Stamatios Theocharis, Maria Delivoria-Papadopoulos. – Abstract 228
- 3:00pm Early Liquid Protein Supplementation of Human Milk in Very Low Birth Weight Infants**
Megan Tracy, Robert Green, Andrea Weintraub. – Abstract 229
- 3:15pm Break**

Plenary Session II Faculty Young Investigators

3:30pm-4:15pm

Overture

Moderator: George Porter and Joseph Bliss

- 3:30pm** Decreasing BPD Rates and Risk Attributed To Mechanical Ventilation: A Population Based Cohort Study
E. A. Jensen, S. A. Lorch. – Abstract 230
- 3:45pm** Revisiting Appendiceal Diameter Via Ultrasound for the Diagnosis of Acute Appendicitis
Henry Chicaiza, Laurie Malia, Christine Mulvey, Sharon Smith. – Abstract 231
- 4:00pm** Impact of Vapotherm Use on Neonatal Respiratory Support Patterns and Length of Stay
Suma B. Hoffman, Natalie Terrell, Colleen A. Hughes Driscoll, Natalie L. Davis. – Abstract 232

Saturday, March 21, 2015 Platform Session

Behavior and Developmental Pediatrics

4:30pm-6:00pm

Minuet

Moderators: Sharon Smith

- 4:30pm** “Hiding in Plain Sight”: Common Neurodevelopmental Disturbances in Undiagnosed Children with X and Y Chromosomal Variations
Carole Samango-Sprouse, D. Corley Gibbs, Teresa Sadeghin, Diana P. Sisson, Andrea L. Gropman. – Abstract 33
- 4:45pm** Relationship Between Child Sleep Patterns, Inattention and Hyperactivity
Michele Alexandra L. Ledesma, Daniel Erichsen, David H. Rubin, Paulo R. Pina. – Abstract 234
- 5:00pm** Comparison of Screening Strategies To Detect the Full Range of Developmental-Behavioral Problems Among Young Children
Daryl W. Garfinkel, Ana F. El-Behadli, Radley C. Sheldrick, Ellen C. Perrin. – Abstract 235
- 5:15pm** Heterogeneity among Children Presenting with Developmental Problems
Brenda Rojas, Laura Ramirez, Susan E. Marakovitz, Radley C. Sheldrick, Ellen C. Perrin. – Abstract 236
- 5:30pm** The Effect of Low Blood Lead Concentrations on Working Memory in Chinese Children
Naixue Cui, Jianghong Liu. – Abstract 237
- 5:45pm** Physicians’ Knowledge About the Legal Consequences of Stimulant Diversion: Perception vs. Reality
Natalie Colaneri, Sujit Vettam, Majnu John, Andrew Adesman. – Abstract 238

Emergency Medicine - General

4:30pm-6:00pm

Maestro A

Moderators: Kate Ackerman

- 4:30pm** Usefulness of a Sepsis Protocol as a Screening Tool in an Urban Community Hospital
Anne Marie Abao, Lily Quon Lew, Dakshayani Guttal, Susana Rapaport, Gagan Gulati. – Abstract 239
- 4:45pm** The Effect of Point-of-Care Ultrasound on Emergency Department Diagnosis and Management of Cellulitis Versus Local Allergic Reaction from Insect Bites
Jennifer E. Sanders, James W. Tsung, Ee T. Tay. – Abstract 240

Saturday, March 21

5:00pm Performance of Non-Contrast MRI in Evaluation of Appendicitis in Children

Ashley C. Notartomaso, Edward Milman, Robin Frank-Gerszberg, Warren B. Freitag, Nileshwari M. Patel, Michael Gorn. – Abstract 241

5:15pm Knowledge and Prevalence of Pertussis Booster Vaccine Among Emergency Department Healthcare Personnel

Jeffrey Dela Cruz, Jung-Eun Ha, Deborah A. Levine. – Abstract 242

5:30pm Screening for Chlamydia and Gonorrhea in Young Males Seeking Care in an Urban Pediatric Emergency Department

Megan E. Maraynes, Jennifer H. Chao, Shahriar Zehbtachi, Konstantinos Agoritsas. – Abstract 243

5:45pm Predictability of an ED-Screening Tool for Future Exposure To Violence

Christopher M. Mashiak, Christine H. Mulvey, Sharon R. Smith, Steven C. Rogers. – Abstract 244

General Pediatrics II

4:30pm-6:00pm

Maestro B

Moderators: Mario Cruz and Marcia Van Vleet

- 4:30pm** Association of Dual Food and Energy Insecurity With Adverse Child Behaviors and Health
Cristina Fernandez, Yang Jiang, Melissa Stockwell, Yumiko Aratani. – Abstract 245
- 4:45pm** Evaluation of a Multidisciplinary Home Visiting Program for Children With Special Health Care Needs
Elaine Lin, Maureen Braun, Susann Cortes, Sanite Theophile, Joseph Truglio. – Abstract 246
- 5:00pm** Immunization Rates of Children Diagnosed with Autism-Spectrum Disorders in New York State: A Pilot Study
Danielle P. Wales, Sara Horstmann, Anthony Malone, Susan L. Hyman, Judith A. Lucas, Chandni Vaid, Susanna Hill. – Abstract 247
- 5:15pm** “It All Depends”: A Qualitative Study of Parents’ Views of Human Papillomavirus (HPV) Vaccine for Their Adolescents At Ages 11-12 Years
Caitlin E. Hansen, Marisol Credle, Eugene D. Shapiro, Linda M. Niccolai. – Abstract 248
- 5:30pm** Obesity Education in the Inpatient Setting: A Needs Assessment
Rotem Elitsur, Selorm Adzaku, Katie Tran, Rita Dohmen, Geoffrey Bajwa, Daria Ferro, Elizabeth Silberholz, Hannah Neubauer, Mario Cruz. – Abstract 249
- 5:45pm** First Exposure and Use of Mobile Media in Young Children
Hilda Kabali, Rosemary Nunez-Davis, Sweta Mohanty, Jennifer Budacki, Kristin Leister, Maria Katrina Tan, Matilde Irigoyen, Robert Bonner. – Abstract 250

Hematology / Oncology

4:30pm-6:00pm

Rhapsody

Moderators: Hamid Bassir

- 4:30pm** Rescue of the Mucocutaneous Manifestations in a Mouse Model of Recessive Dystrophic Epidermolysis Bullosa (RDEB) by Human Cord Blood Derived Unrestricted Somatic Stem Cells (USSCs)
Larisa Ivanova, Ahmed Rashad, Yanling Liao, Mitchell S. Cairo. – Abstract 251
- 4:45pm** Disassociation of T-Cell Recovery with T-Cell Donor Chimerism Following Allogeneic Stem Cell Transplantation (AlloSCT) in Pediatric Recipients
Anu Mallapaty, Sumith Roy, Lauren Harrison, Carmella VanDeVen, Mark Geyer, Lee Ann Baxter Lowe, Mitchell S. Cairo. – Abstract 252

- 5:00pm The Effect of Antenatal Steroids on Umbilical Cord Blood DNA Methylation in a Preterm Population**
Susan M. Braid, Hector Corrado Bravo, Kwame Okrah, Xiumei Hong, Nana Matoba, Xiaobin Wang. – Abstract 253
- 5:15pm Characterization of Natural Killer Cell Development in the Human Fetus and Newborn**
Amelie Collins, Steven L. Reiner. – Abstract 254
- 5:30pm Effect of Gestational Immaturity on T-Cell Sub-Types and CD+71 Erythroid Cells**
Anita M. Ware, Carl V. Hamby, Neetu Godhwani, Edmund F. La Gamma. – Abstract 255
- 5:45pm Perinatal T Cell Dysregulation in Preterm Infants Is Associated With Pulmonary Morbidity and Continues Through Infancy**
Jason Emo, Wang Hongyue, Heide Huyck, Sara Misra, Ravi Misra, David J. Topham, Rita M. Ryan, Ann M. Reynolds, Thomas Mariani, Gloria S. Pryhuber, Kristin M. Scheible. – Abstract 256

Neonatal Neurology - Hypothermia

- 4:30pm-6:00pm Aria A**
Moderators: An Massaro
- 4:30pm Association of Brain Injury and Neonatal Cytokine Response During Therapeutic Hypothermia (TH) in Newborns With Hypoxic Ischemic Encephalopathy (HIE)**
Janet E. Orrock, Karuna Panchapakesan, Gilbert Vezina, Kari Harris, Taeun Chang, Susan Knobloch, An N. Massaro. – Abstract 257
- 4:45pm WITHDRAWN**
- 5:00pm Hypothermia and Vasoreactivity in Asphyxiated Lambs**
Bushra Afzal, Justin Helman, Sylvia Gugino, Praveen Kumar Chandrasekharan, Jayasree Nair, Satyan Lakshminrusimha. – Abstract 259
- 5:15pm Effect of Hypothermia on High Affinity Ca²⁺ ATPase Activity in the Cerebral Cortex of Newborn Piglets Following Hypoxia**
Melanie Leong, Waseem Akhter, Nicholas Obiri, Andy Wang, Maria Delivoria-Papadopoulos. – Abstract 260
- 5:30pm Cerebral Energy Failure after Hypoxia-Ischemia in Newborn Piglets: Protection by Hypothermia**
Shadi Malaeb, Siba A. Islam, Nicholas Obiri, Juan Ballesteros, Maria Delivoria-Papadopoulos. – Abstract 261
- 5:45pm Effect of Concurrent Inhibition of Nitric Oxide Synthase and Hypothermia on Free Radical Injury after Hypoxia-Ischemia in the Newborn Piglet Brain**
Shadi Malaeb, Taylor Wheaton, Amit Jain, Siba A. Islam, Maria Delivoria-Papadopoulos. – Abstract 262

Neonatology - General

- 4:30pm-6:00pm Overture**
Moderators: Mohamed Ahmed and Sara Berkelhamer
- 4:30pm Oxygen Saturation Profiles in Extremely Low Birth Weight (ELBW) Infants with and without Supplemental Oxygen**
Joseph R. Isler, Philip G. Grieve, Marilyn Weindler, David A. Bateman, Marianne Garland, Raymond I. Stark, Rakesh Sahni. – Abstract 263
- 4:45pm Newborn's Brain and Somatic Tissue Oxygenation During Skin-to-Skin Contact in the NICU**
Natalia A. Isaza, Khodayar Rais-Bahrami, Mariam Said, Mauricio Cabrera. – Abstract 264
- 5:00pm Effect of Caffeine on Intermittent Hypoxia in Preterm Infants**
Kelley Z. Kovatis, Juliann M. Di Fiore, Richard J. Martin, Haresh Kirpalani. – Abstract 265

- 5:15pm Margin of Safety for Discharge of the Preterm Infant With Apnea of Prematurity: How Many Days Off Caffeine Is Enough Time?**
Josef A.A. Doyle, Dennis Davidson, Susan Katz, Marie Varela, Catherine Messina, Doreen DeMeglio, Joseph Decristofaro. – Abstract 266
- 5:30pm Sucrose During Heel Lance and Effect on Maternal Interaction, Social Behavior and Pain Thresholds in the Neonatal Rat**
Jennifer P. Alexander, Kristen A. Wellmann, Sandra M. Mooney. – Abstract 267
- 5:45pm A Comprehensive Pain & Sedation Initiative Reduces Opioid Exposure in the NICU**
Pratik Parikh, Jeffrey M. Meyers. – Abstract 268

Neonatology - Infectious Disease et al.

- 4:30pm-6:00pm Concerto AB**
Moderators: Hitesh Deshmukh
- 4:30pm Gardnerella Vaginalis Induces Intra-Amniotic Inflammation in a Murine Model of Ascending Infection During Pregnancy**
Roselle Vittorino, Leah M. Byland, Shari E. Gelber, Tara M. Randis, Adam J. Ratner. – Abstract 269
- 4:45pm Development of Point-of-Care Rapid Test of Inter-alpha Inhibitor Proteins for Early Detection of Neonatal Sepsis**
Birju A. Shah, Jeff Hall, Andre Santoso, Joseph Qui, Yow-Pin Lim, James Padbury. – Abstract 270
- 5:00pm Impact of Induction of Labor (ACOG) and Chorioamnionitis (AAP) Guidelines on NICU Admissions in Erie County, NY**
Indirapriya Darshini Avulakunta, Lisa Licare, Vikramaditya Dumpa, Satyan Lakshminrusimha. – Abstract 271
- 5:15pm Acute Hypoxia Induces Cytokine Synthesis and Release in Mouse Pheochromocytoma Cells – A Potential Protective Mechanism To Hypoxic Stress**
Hazel Villanueva, Priyadarshani Giri, Marian Evinger. – Abstract 272
- 5:30pm Lack of Efficacy of Antenatal Corticosteroids in IUGR Infants**
Kaitlin McLean, David A. Paul, Shivaprasad Goudar, Nancy L. Sloan, Amy Mackley, Richard Derman, Fran Jaeger, Dana Thompson, Haritha Vellanki, Robert Locke. – Abstract 273
- 5:45pm Meconium Stained Amniotic Fluid and Depressed Neonates: Does Presence of Meconium Below the Cord Changes Outcomes?**
C. Briana Bertoni, Zubair H. Aghai. – Abstract 274

Saturday, March 21, 2015

Poster Session III Emergency Medicine / Gastroenterology Neonatology / Hematology/Oncology Infectious Disease / Neurology / Pharmacology Pulmonology

- 6:00pm-7:30pm Symphony**
- 1 1Limiting Unnecessary Cervical Spine Computed Tomography in Pediatric Trauma Evaluation**
Kunal Chadha, Jennifer Argentieri, Scott Bouton, Brian Wrotniak. – Abstract 275
- 2 Effects of Ultrasound as an Initial Imaging Modality on Complication Rates in Children with Suspected Appendicitis**
Stephen Alerhand, Ee Tay. – Abstract 276
- 3 Finding Comfort in Different Diagnostic Modalities for Children With Suspected Appendicitis**
Andrew T. Rizzo, Viviana C. Forti, Camille N. Immanuel, Michael Gorn. – Abstract 277

- 4 **Assessing Childhood Obesity Risk Through Parental Diet and Location of Residence**
Yue J. Lin, Christine H. Mulvey, Sharon R. Smith. – Abstract 278
- 5 **Pain Assessment and Management of Children Presenting To Pediatric ED with Long Bone Fractures**
Noah P. Kondamudi, Sneha Patel. – Abstract 279
- 6 **Leadership Rounding in the Emergency Department (ED): An Opportunity for Real-Time Patient Experience Feedback**
Mohsen Saidinejad, Sephora N. Morrison, Sabah F. Iqbal, Joanna S. Cohen, Kristen A. Breslin, Shilpa J. Patel, James M. Chamberlain. – Abstract 280
- 7 **Correlating Bedside Lung Ultrasound with Tachypnea in Bronchiolitis: Preliminary Data from the B-PLUS Study**
Sara B. Cortes, Sharon Yellin. – Abstract 281
- 8 **The Impact of Trained Pediatric Specialists on Pediatric Transport to a Pediatric Tertiary Care Facility**
Margaret A. Lafferty, Margarita Lorch, James Hertzog. – Abstract 282
- 9 **Rapid Transfer to the Pediatric Intensive Care Unit after Admission from the Emergency Department: Role of the Pediatric Early Warning Score**
Kimberly E. McMahon, Erica L. Del Grippo, Christopher J. Plymire, Andrew D. DePiero. – Abstract 283
- 10 **Reducing Repeat Head Computed Tomography for Pediatric Trauma Patients**
Melanie A. Weller, Alfred P. Kennedy, Carol A. Hanson, Christopher P. Coppola. – Abstract 284
- 11 **Parent Preferences for the Pediatric Emergency Department Discharge Process**
Margaret E. Samuels-Kalow, Alyssa R. Smith, Emily Hardy, Karin Rhodes, Cynthia Mollen. – Abstract 285
- 12 **Determining Which Children Need ECGs in the Emergency Department**
Shiv D. Gandhi, Jesse Sturm, Danielle Federico, Renee Silvis, Jill Popp, Harris Leopold, Sharon R. Smith. – Abstract 286
- 13 **Comparing Focused Assessment with Sonography for Trauma (FAST) with Computed Tomography (CT) in Detecting Intra Abdominal Injury (IAI) in Pediatric Patients Presenting to the Emergency Department (ED) with Blunt Abdominal Trauma (BAT)**
Mary Emborsky, Brian Wrotniak. – Abstract 287
- 14 **Does Time To Treatment Influence Hospitalizations Among Children Presenting to the ED with Acute Asthma Exacerbation?**
Pranavi Vemuri, Anjali Mitra, Daniel Krich, Noah Kondamudi. – Abstract 288
- 15 **Are We Doing Too Many Tests for Children Presenting to the in the Emergency Department With Acute Asthma Exacerbation?**
Anjali Mitra, Pranavi Vemuri, Noah Kondamudi. – Abstract 289
- 16 **The Initial Effects of the Patient Protection and Affordable Care Act (PPACA) on Pediatric Emergency Departments (PEDs)**
Bryan N. Swenson, Sharon R. Smith, Jesse J. Sturm. – Abstract 290
- 17 **Non-Pathogens and Positive Blood Cultures in Sickle Cell Patients Presenting to the Emergency Department with Fever**
Oluwakemi Badaki-Makun, Angela Ellison, Brittany Oliver, Mark Nimmer, Nihal Ali, Katie Eisenbrown, James Chamberlain, David C. Brousseau. – Abstract 291
- 18 **Effect of Childhood Obesity on Emergency Department Resource Utilization in an Inner City Community Hospital**
Kirishanth Perinpanathan, Noah Kondamudi, Majo Joseph, Upile Nawartne. – Abstract 292
- 19 **Development of a Reliable Physiologic Model for Prediction of High Altitude Illness**
Nitin Ron, Abhinav Parikh, Mazin Alhamdani, Barbara Gatton, Nayaab Khawar, Pramod Narula, Lawrence Melniker. – Abstract 293
- 20 **Patient Outcome Feedback for the PEM Provider: Are We Meeting the Need?**
Michael P. Goldman, Martin V. Pusic. – Abstract 294
- 21 **Ondansetron Use in Children with Acute Gastroenteritis: Knowledge, Attitude and Practice of Ambulatory Health Care Providers**
Folashade Farri, Shelly Choudhury, Emmanuel R. Kwesiga, Roy Vega, Ayoade Adeniyi, Stefan Hagmann. – Abstract 295
- 22 **Nuclear Receptor Regulation of Placental Fatty Acid Transport Proteins: Implications for Fetal Overgrowth in Maternal Obesity and Gestational Diabetes**
Naureen Memon, Kristin M. Bircsak, Barry Weinberger, Lauren M. Aleksunes. – Abstract 296
- 23 **Estimation of Small Intestinal Bacterial Overgrowth in Children with Different Gastrointestinal Symptoms**
Dong Xi, Puneet Arora, Yatian Zhang, Radha Nathan. – Abstract 297
- 24 **Pediatric Refugee Health in Buffalo, NY**
Angela Sandell, Robert Baker, Jennifer Maccarone, Changxing Ma, Susan Baker. – Abstract 298
- 25 **Indomethacin Dose-Interruption & Maternal Chorioamnionitis: Risk Factors for Indomethacin Treatment Failure in Preterm Infants with PDA**
Souvik Mitra, Muzafar Gani Abdul Wahab. – Abstract 299
- 26 **Nuclear Heme Oxygenase (HO)-1 Enhances DNA Repair After Hyperoxic Injury Through OGG1**
Monica L. Williams, Amal P. Fernando, Mekdes T. Yohannes, Ping La, Phyllis A. Dennery. – Abstract 300
- 27 **Influence of Central Hemodynamics and Dual-Lumen Catheter Positioning on Recirculation in Neonatal Venovenous ECMO**
Mariam M. Said, Gerald T. Mikesell, Oswaldo Rivera, Khodayar Rais-Bahrani. – Abstract 301
- 28 **Inflammatory Role of Pulmonary Artery Smooth Muscle Cells in Pulmonary Vascular Remodeling in Pulmonary Artery Hypertension**
Joanna Costa, Deepthi Alapati, Yan Zhu, Paul Fawcett, Thomas Shaffer. – Abstract 302
- 29 **Radiation Exposure in Very Low Birth Weight Infants in the NICU**
Samuel Ajayi, Saba Faranaz, Saul Rubin, David Saul, Mindy Horrow, David L. Schutzman. – Abstract 303
- 30 **The Immature T Cell Receptor Repertoire Impairs the Neonatal CD8⁺ T Cell Response To Influenza Infection**
Alison J. Carey, Donald T. Gracias, Jillian L. Thayer, Yvonne M. Mueller, Jennifer L. Hope, Peter D. Katsikis. – Abstract 304
- 31 **Developmental Intervention for Infants of Adolescent Mothers: Phase 1**
Laurie Hoffman, Alicia Hersey, Richard Tucker, Betty Vohr. – Abstract 305
- 32 **Non-Invasive Airway Resistance Measurement in Neonates**
Khushbu Shukla, Alyse M. Laliberte, Jafar Vossoughi, Arthur Johnson, Martin Keszler. – Abstract 306
- 33 **Cost Analysis of Home Monitor Utilization To Facilitate Earlier Discharge in Late Preterm and Full Term Infants with Apnea**
Michael Amberson, Lauren Veit, Dmitry Dukhovny, Lawrence M. Rhein. – Abstract 307

- 34 **High-Flow Nasal Cannula and CPAP Use in Extremely Low Birth Weight Infants**
Dalal Taha, Michael Kornhauser, Jay S. Greenspan, Zubair H. Aghai.
 – Abstract 308
- 35 **Mortality, Morbidity and Resource Use Among Infants With Trisomy 21(TR21) Admitted To Level III (L₃) NICUs**
Mary A. Woodward, Connie Williams, Abhay Lodha, Prakesh S. Shah, Sandesh Shivananda.
 – Abstract 309
- 36 **Improving Delivery of Mother’s Own Milk To Premature Infants ≤ 34 Weeks in a Tertiary Care NICU**
Batoul Elamin, Karen Kamholz, Gail Flory, Kelsey Capper, Melissa Scala.
 – Abstract 310
- 37 **Immature Breathing Pattern at Discharge in Moderately Preterm Infants**
Batoul Elamin, Allison Greenleaf, Michelle Peterson, Deborah Hoy, Jayashree Ramasethu.
 – Abstract 311
- 38 **Coagulation Status in Premature Infants with Low Birth Weight**
Brittany M. Reid, Edwin Doe, Tress Kitaeff.
 – Abstract 312
- 39 **Parental Assessment of Comfort in Infants Affected By Life-limiting Or Terminal Conditions Treated With a Personalized Comfort Care Management**
Elvira Parravicini, Margherita Daho’, Emanuela Saita.– Abstract 313
- 40 **Impact of Maternal Medically Assisted Treatment Medications on Neurodevelopmental Outcomes of Infants Treated for Neonatal Abstinence Syndrome**
Ronnelle S. King, Paul Visintainer, Sheila Foss, Rachana Singh.
 – Abstract 314
- 41 **WITHDRAWN**
- 42 **Measurement of Tensile Forces on Various Patch Materials for Congenital Diaphragmatic Hernia Repair Using a Novel Testing Platform**
Justin R. Goldstein, Scott H. Seidman, Louisa Bauer, Asia Ingram, Megan Stockdill, Jessica Yohay, Patricia R. Chess.
 – Abstract 316
- 43 **Birth Hospital Level Correlates With Long Term Neurocognitive Outcomes of Very Low Birth Weight Infants**
Semsa Gogcu, David Aboudi, Jordan Kase, Heather Brumberg.
 – Abstract 317
- 44 **Using Continuous Feeds in Preterm Infants ≤ 1000 gms To Reduce the Incidence of BPD**
Arjun Chandran, Jodi Young, Shakuntala Chandra.
 – Abstract 318
- 45 **Is Excess Fluid Administration Shortly Following Birth in Very Low Birth Weight Neonates Associated With an Increased Rate of Patent Ductus Arteriosus Requiring Treatment?**
Michelle B. Levinson, Jonathan P. Mintzer.
 – Abstract 319
- 46 **Maximizing Nutrition To Minimize Extrauterine Growth Retardation in Low Birth Weight Neonates and Assessing Retinopathy of Prematurity in This Population**
Ankita Shukla, Bethany Jung, Shakuntala Chandra.
 – Abstract 320
- 47 **Tissue Specific Expressions of IGFs Family**
Qi Rong, Karl Pfeifer.
 – Abstract 321
- 48 **Decrease Incidence of Fungal Sepsis by Administration of Fluconazole To Patients ≤1500 Grams**
Sharadha Polam, Ankita Shukla, Vikas Chowdhary, Mark Hiatt.
 – Abstract 322
- 49 **Pancreatic Cancer in the Pediatric Population: A Population Based Clinical Outcomes Study Involving 103 Patients from the Surveillance Epidemiology and End Result (SEER) Database (1973–2010)**
Krishnaraj Mahendraraj, Christine S.M. Lau, Ronald S. Chamberlain.
 – Abstract 323
- 50 **Transfusion Related Iron Overload in Pediatric Oncology and Response To Iron Chelation Therapy**
Sameer Farouk Sait.
 – Abstract 324
- 51 **Clinical Profile of Children with Sickle Cell Disease (SCD) & Abdominal Pain : Delayed/Missed Acute Surgical Abdomen?**
Shubhi Kaushik, Nitya Gulati, Alitia Kandasamy, Scott T. Miller, Ninad Desai.
 – Abstract 325
- 52 **Chordomas in the Pediatric Population: A Population Based Clinical Outcomes Study Involving 86 Patients from the Surveillance Epidemiology and End Result (SEER) Database (1973–2010)**
Christine S.M. Lau, Krishnaraj Mahendraraj, Ronald S. Chamberlain
 – Abstract 326
- 53 **Genetic Elements Common To HIV-1, Ebola, and Marburg: Proline Clusters (ProCIs) As Targets for a Novel Class of Broad-Spectrum Antivirals Impervious To Escape Mutations**
Hartmut M. Hanauske-Abel, Michael Spino, Mainul Hoque, Anthony Popowicz, George K. Lee, Darlene D’Alliessi Gandolfi, Paul E. Palumbo.
 – Abstract 327
- 54 **Expansion of Tetanus, Diphtheria and Acellular Pertussis (Tdap) Vaccination Guidelines Is Associated with Reduction in Infant Pertussis Hospitalization Rates**
Shetal Shah, Nandini Vijayakanthi, Heather L. Brumberg.– Abstract 328
- 55 **Antibodies Targeting Structural Epitopes on gp41 as a Potential Inherent Resistance Mechanism To HIV Fusion Inhibitors**
Hakimuddin Sojar, Michele Smith, Ravikumar Aalinkeel, Supriya Mahajan, Stanley A. Schwartz, Chiu-Bin Hsiao, Mark D. Hicar.
 – Abstract 329
- 56 **Impact of Rotavirus Vaccination on Circulating Rotavirus Genotypes in a State With a Universal Vaccine Policy**
Sabina D. Holland, Sara M. Nelson, Penelope Dennehy.
 – Abstract 330
- 57 **Paragonimus Westermani Infection Masking As Recalcitrant Multi-Drug Resistant Tuberculosis**
Laura M. Wiltsie, Adam J. Olewnik, Mark D. Hicar. – Abstract 331
- 58 **Characteristics of Invasive Cytomegalovirus (CMV) Enterocolitis in Immunocompetent Children**
Paul K. Sue, Nicole Salazar-Austin, Ravit Arav-Boger.– Abstract 332
- 59 **The Effect of a Clinical Pathway on Antibiotic Prescribing for Outpatient UTI**
Jonathan Beus, Carter Cowden, Talene Metjian, Daniele Dona, Ron Keren, Jane Lavelle, Aileen Schast, Kathy Shaw, Jeffrey Gerber.
 – Abstract 333
- 60 **Risk of Bacterial Meningitis in Young Infants and the Role of Lumbar Puncture for Evaluation of Fever**
Namrita J. Odackal, Andrew Lim, Simon Li, Sheila M. Nolan, Aalok R. Singh.
 – Abstract 334
- 61 **Enterovirus D68 Infection in Children: Is It As Severe As Initially Described?**
Daniel Ruderfer, Leonard R. Krilov.
 – Abstract 335
- 62 **Culture Pus Not Blood: An Intervention To Minimize Lab Testing in the Evaluation of Uncomplicated Skin and Soft Tissue Infections**
Amy J. Sloane, David M. Pressel.
 – Abstract 336
- 63 **Changes in Cortical Structure in Infantile Nephropathic Cystinosis**
Poorva Vaidya, Timothy T. Brown, Doris A. Trauner.– Abstract 337

64 **Long Term Neuroprotective Effects of Human Adipose-Derived Stem Cells (hASCs) and Hypothermia in Neonatal Rats Post Hypoxic Ischemic Encephalopathy**
A. Kushnir, M. Mariappan, A. Koolwal, N. Kappy, M. February.
 – Abstract 338

65 **The Hospital Impact and Resource Utilization of Pediatric Encephalitis over a 10 year period**
Dayanand N. Bagdure, Jason W. Custer, Suchitra Rao, Kevin Messacar, Samuel Dominguez, Brandon W. Beam, Adnan Bhutta.
 – Abstract 339

66 **Effect of Concurrent Administration of LEHD With Hypothermia on Cam Kinase IV Activity after Hypoxia-Ischemia in Newborn Piglet Brain**
Panagiotis Kratimenos, Shadi Malaeb, Ioannis Koutroulis, Jane McGowan, Maria Delivoria-Papadopoulos.
 – Abstract 340

67 **Effect of Pre-Hypoxic Src-Kinase Inhibition on Cerebral Hypoxic Injury in Newborn Piglets**
Peter Osgood, Geoffrey Bajwa, Jherna Balany, Shadi Malaeb, Maria Delivoria-Papadopoulos.
 – Abstract 341

68 **Clonidine: An Established Drug with New Risks for Adverse Drug Events in Pediatric Patients**
Santosh Kaipa, Nilam Gandhi, Susan Villegas, Gabriella Azzarone, Regina Cregin, Susan McAllen, Chhavi Katyal, H. Michael Ushay.
 – Abstract 342

69 **Hyperoxia Interacts With Circadian Disruption To Worsen Neonatal Lung Injury Through Modulation of Rev-erba**
Shaon Sengupta, Guang Yang, Mekdes Yohannes, Alexa Sadreameli, Andrew Parsons, Phyllis Dennerly.
 – Abstract 343

70 **Genetic Variation of NFkBIA Gene Protects from Bronchopulmonary Dysplasia in Extremely Low Birth Weight Infants**
Usama Younis, Lynnette H. Kim, Alexander Feldman, Umesh Paudel, Lance A. Paron.
 – Abstract 344

71 **Impact of Residents' Education in ICS Utilization on Acute Asthma Outcome: A Quality Improvement Initiative**
Aneela Bidiwala, Claudia Halaby, Kathy Mckillop, Melodi Pirzada, Lynn Quintos.
 – Abstract 345

6 **The Impact of HIV School Education on Sexual Activity, Substance Use Before Sexual Activity, and Condom Use Among Adolescents in a Large National Database**
Subha Battu, David Fagan, Brinda Doraiswamy, Joshua Fogel, Fernanda Kupferman.
 – Abstract 351

7 **HIV Testing Among High Risk Adolescents in a Large National Database**
Subha Battu, David Fagan, Brinda Doraiswamy, Joshua Fogel, Fernanda Kupferman.
 – Abstract 352

8 **Adherence To Vitamin D Screening and Treatment Guidelines in Obese Children Is Low**
Rotem Elitsur, Maria Bergel, Rita Guevara-Dohmen, Bruce Bernstein, Mario Cruz.
 – Abstract 353

9 **Comparison of Two Novel Quality Improvement EHR Tools To Increase Blood Pressure Documentation and Recognition of Hypertension**
Emily Skoda-Mount, Steve Caddle, John Rausch, Minna Saslaw, Dana Sirota, Mariellen Lane.
 – Abstract 354

10 **Fostering the Mentoring Relationship in Adolescent Transplant Recipients: The Role of E-Communication**
Christopher Paterno, Nina Foster, Hannah Dashefsky, Sandra Amaral.
 – Abstract 355

11 **From Boosters To Books: Enhancing Emergent Literacy in the Medical Home**
Krishika A. Graham, Milani R. Patel, Sandra F. Braganza.– Abstract 356

12 **Working with a Medical Legal Partnership To Address Food Insecurity in a Urban Pediatric Practice**
Hans B. Kersten, Elizabeth Oquendo, Daniel R. Taylor.– Abstract 357

13 **Semi-Automatic Mining of Abstracts for Clinical Trial Information**
Anoop Rao.
 – Abstract 358

14 **Determinants and Outcomes of Provider and Family Participation in a Multi-State Asthma Portal Implementation**
A. Fiks, N. duRivage, S. Finch, K. Giacomini, M. Ross, B. McCarn, C. Lehmann, R. Grundmeier.
 – Abstract 359

15 **Ibuprofen and Acetaminophen Use in Children Hospitalized With Acute Asthma**
Nicole M. Leone, Lindsey C. Douglas.
 – Abstract 360

16 **BMI an Independent Risk Factor Increased Length of Stay (LoS) in Acute Asthma**
Pravesh Sangwan, Haifa Jaedi, Puneet Arora, Yash Shah, Marina Rubin, Misha Sodhi, Franscene Oulds.
 – Abstract 361

17 **Outpatient Continuity of Care During Infancy Impacts Health Care Use and Receipt of Preventative Services During Early Childhood**
Elizabeth M. Enlow, Molly Passarella, Scott A. Lorch.– Abstract 362

18 **Comparison of Immunization Delivery Quality Improvement Dissemination Strategies**
Linda Y. Fu, Kathleen Zook, Janet Gingold, Catherine W. Gillespie, Christine Briccetti, Rachel Y. Moon, Denice Cora-Bramble.
 – Abstract 363

19 **WITHDRAWN**

20 **Trimming the Fat: Utilizing PDSA Cycles To Improve Obesity Counseling and Follow Up**
Mary K. Mehlman, Ceena Philipose.
 – Abstract 365

21 **Supporting Overweight and Obesity Management with Clinical Decision Support**
Jeremy Michel, Mari Mui, Robert Grundmeier, Patricia DeRusso, Saba Khan.
 – Abstract 366

Sunday, March 22, 2015

Poster Session IV General Pediatrics / Neonatology

7:30am-9:00am

Symphony

1 **Hospital Variation in Cervical Imaging of Young Children with Abusive Head Trauma**
M. Katherine Henry, Mark R. Zonfrillo, Lihai Song, Chris Feudtner, Joanne N. Wood.
 – Abstract 346

2 **Intrapartum GBS Chemoprophylaxis with Vancomycin and Clindamycin: Newborn Outcomes**
Lauren Blatt, Jordanna Platt-Koppel, Linda Gerber, Erika Abramson.
 – Abstract 347

3 **Evaluating the Financial Impact of the “Two Midnight Rule” Should It Be Implemented for Pediatric Inpatients**
Nancy Palumbo, Meredith Krevitsky, Jamilah Grant-Guimares, Jill A. Leibowitz, Stacey McGeechan, Claudette Poole, Helen Scott, Dipti R. Mirchandani.
 – Abstract 348

4 **Relationship between Caregiver Distractions and Children’s Risk Taking Behaviors on a Playground**
Anna Krevskaya, Janet Lee, Ruth L. Milanaik, Alyson Gutman, David Meryash.
 – Abstract 349

5 **Bridging the Child Obesity Culture Gap in the Chinese-American Population with a Novel Meal-Planning Visual Aid**
James X. Wang, Betty Lung, Debra Katz-Feigenbaum, Maura D. Frank.
 – Abstract 350

- 22 **Resident Driven Improvement in Medication Reconciliation**
Vladimir Barayev, Nancy Palumbo. – Abstract 367
- 23 **Postpartum Depression and Intimate Partner Violence Screening: Transition from Obstetrics To Pediatrics**
Batul Kaj, Malgorzata Skarzynska, Sabaa Alvi, Chiamaka Onyewuchi, Cynthia Delago. – Abstract 368
- 24 **Do Pediatricians Act on Postpartum Depression and Intimate Partner Violence Screening Results?**
Malgorzata Skarzynska, Batul Kaj, Sabaa Alvi, Chiamaka Onyewuchi, Cynthia Delago. – Abstract 369
- 25 **Low Health Literacy (HL): Potential Barrier To Using Parent-Completed Developmental Screening Tools (PCDST)**
Victoria Chen, Casilda I. Suarez Hesketh, H. Shonna Yin, Suzy Tomopoulos, Benard P. Dreyer, Karen M. Hopkins, Hugh Bases, Alan L. Mendelsohn. – Abstract 370
- 26 **You've Got Books: Reach Out and Read At Three New York City Sites**
Leora Mogilner, Thomas Chavez, Cynthia Katz, Marcy Stein Albert. – Abstract 371
- 27 **Preventable Asthma Hospitalizations in New Jersey (NJ) Children: Effect of Hurricane Sandy**
Chidi R. Achebe, Amy L. Davidow, Mangala Rajan, Pauline A. Thomas, Marian Passannante, William Halperin. – Abstract 372
- 28 **Parental Opinion About Pediatric Biospecimen Permission**
Francis J. DiMario, Julia Vresilovic. – Abstract 373
- 29 **WITHDRAWN**
- 30 **Clinical and Histopathologic Chorioamnionitis and Neonatal Clinical Outcome**
Alfred Troncales, Joan Villafior, Raghava Kavalla, Kelly A. Barbara. – Abstract 375
- 31 **State Challenges To Child Health Quality Measure Reporting and Recommendations for Improvement**
Ankoor Y. Shah, Karen LLanos, Denise Dougherty, Stephen Cha, Patrick H. Conway. – Abstract 376
- 32 **Evaluation of Problem Gaming Among Children Attending Tertiary Care Weight Management Centers**
Sam Stubblefield, George Datto, Thao-Ly Phan, Lloyd Werk, Kristin Stackpole, Bob Siegel, William Stratbucker, Jared Tucker, Amy L. Christison, Douglas Gentile. – Abstract 377
- 33 **Improving the Rate of Exclusive Breastfeeding at the Brooklyn Hospital Center**
Sureka Paramaguru, Kirishanth Perinpanathan. – Abstract 378
- 34 **Planning and Implementing Screening for Ecological Stressors in a Pediatric Practice**
Cynthia W. DeLago, Susan M. Leib, Matilde Irigoyen. – Abstract 379
- 35 **Impact of a Swaddling Educational Intervention on Infant Sleeping Practices**
Barbara A. Kelly, Matilde Irigoyen, Sherry C. Pomerantz, Monique Mondesir, Natalia Isaza Brando. – Abstract 380
- 36 **Quality Improvement and Pre-clinic Huddles Increase Effectiveness of Providers' Literacy Advice and Book Giving**
Priya P. Patel, Stacey Engster, Jennifer L. Robbins, Hans B. Kersten, Mario Cruz, Jeremiah Goldstein, Leah M. Scherzer, Daniel R. Taylor, Bruce A. Bernstein. – Abstract 381
- 37 **Targeted Flu Vaccine Administration To Asthmatic Children in an Urban University Practice: Barriers and Lessons Learned**
Shareen F. Kelly, Bruce Bernstein, Amir Jazayeri, Sophie Katz, Rawahuddin W. Naseem. – Abstract 382
- 38 **Access Dermatology: An Innovative Model To Improve Patient Access To Pediatric Dermatology**
Jonathan M. Miller, Joanne Plesnick, Jay S. Greenspan, Iman Sharif. – Abstract 383
- 39 **Healing Touch Consults at a Tertiary Care Children's Hospital: Two Years' Experience**
Amanda Schlefman, Samuel C. Stubblefield, David Rappaport, Walle Adams-Gerdt. – Abstract 384
- 40 **Asthma and Its Association With School Bullying and Cyberbullying in US High School Students**
Tina Thomson, Fernanda Kupferman, Joshua Fogel, David Fagan, Jack Levine. – Abstract 385
- 41 **Obesity in Hospitalized Children: Physician Attitudes and Perceived Obstacles Versus Parent Desire**
Diana S. Lee, Elissa Gross. – Abstract 386
- 42 **The Impact of Continuity on Outcomes in the Pediatric Weight Management Clinic: A Preliminary Cohort Study**
Uche Onyewuchi, Rushika Conroy, Jennifer Friderici. – Abstract 387
- 43 **Recipe for a Healthy Lifestyle: An Obesity Prevention Program for Hispanic Families in East Harlem**
Lindsey A. Waldman, Marilyn Figueroa, Heather Mitchell, Robert Faller, Leora Mogilner. – Abstract 388
- 44 **Participant Perspectives on Education at WIC**
Adrian A. Furman, Milani Patel, Sandra Braganza. – Abstract 389
- 45 **Barriers and Facilitators To Adoption of Immunization Best Practices: A Qualitative Analysis**
Janet Gingold, Christine Briccetti, Kathleen Zook, Rachel Moon, Ruth Gubernick, Linda Fu. – Abstract 390
- 46 **Prescribing Fresh Produce To Families in Need**
Katie Tran, William J. Woodall, Bruce Bernstein, Hans B. Kersten. – Abstract 391
- 47 **A Primary Care Pilot Study of Infant Pertussis Prevention By Vaccination of Adult Caregivers**
George Dalembert, Stacey Kallem, Melissa R. Martin. – Abstract 392
- 48 **Use of Treatment Guidelines To Improve Neonatal Abstinence Syndrome Outcomes**
Alla Kushnir, Jennifer Bleznak, Aadya Sharma, Cynthia Garretson, Maheswari Mariappan, Erik Brandsma, Judy Saslow. – Abstract 393
- 49 **Evaluation of an Innovative Education Program for Parents About Newborn Screening in an Inner City Community Hospital**
Poonam Kaza, K. Seelaboyina, J. Busse, E. Ninan, M. Jakkam Setty, G. Malonga, Thomas Moulton. – Abstract 394
- 50 **Mechanism of Increased Expression of Ca²⁺/CaM-Dependent Protein Kinase-Kinase in Neuronal Nuclei and Cytosolic Fractions of the Cerebral Cortex of Newborn Piglets**
Fredrick Dapaah-Siakwan, Panagiotis Kratimenos, Waseem Akhter, Amit Jain, Maria Delivoria-Papadopoulos. – Abstract 395
- 51 **Delayed Cord Clamping for Preterms: A Quality Improvement Project**
Jeanne S. Nunez, Julia Johnson, Elizabeth A. Cristofalo, Cynthia Argani, Maureen M. Gilmore. – Abstract 396
- 52 **Early Breast Milk Intensity of Preterm Infants Predicts Intensity in the NICU but Not After Discharge**
Benjamin Courchia, David Rhee, Lawrence Noble. – Abstract 397
- 53 **Is the Antioxidant Capacity of Stored Human Milk Preserved?**
Winston T. Sheen, Champa N. Codipilly, Hardik Patel, Mohamed Ahmed, Richard J. Schanler. – Abstract 398
- 54 **Utility of Alkaline Phosphatase and Intact Parathyroid Hormone for Diagnosing Rickets in VLBW Infants with Severe BPD**
E. A. Jensen, K. C. Dysart, B. Waber, H. Zhang. – Abstract 399

- 55 **The Impact of Exclusive Breastmilk Diet on Growth and NEC**
Abigael Maxwell, Amy Abraham, Rhonda Valdes-Greene, David Aboudi, Heather Brumberg, Edmund La Gamma, Boriana Parvez.
 – Abstract 400
- 56 **HO-1 Disruption Enhances Transcription of the Circadian Gene Rev-erba in Hyperoxia and Alters Circadian Rhythmicity**
Guang Yang, Ping La, Shaon Sengupta, Maurice D. Hinson, Phyllis A. Dennerly.
 – Abstract 401
- 57 **The Effect of Breastfeeding Support Groups on Breastfeeding Outcomes in the NICU**
Erin M.L. Cipko, Sabrina Raheem, Christine Ilik, Kristina J. Murphy, Munjireen S. Sifat, Deborah A. Sandrock, Alan B. Zubrow.
 – Abstract 402
- 58 **The Effect of Breastfeeding Education in the NICU on Post-Discharge Breastfeeding Duration**
Natasha Shapiro, Alyssa Rios, Hollis Bogdanffy, Martha Caprio.
 – Abstract 403
- 59 **Are Genetic Variants of Innate Immunity Recognition Peptides Associated with NEC in Preterm Infants?**
Qais Karim, Lynnette H. Kim, Umesh Paudel, Lance A. Parton.
 – Abstract 404
- 60 **Increase Dose Dependent Binding of Steroids in the Term Neonate Population At Birth**
Arun Kashyap, Steven Ghanny, Michael Giuliano. – Abstract 405
- 61 **Are Genetic Variations of TFAP2 β Associated with PDA in ELBW Infants?**
Alexander Feldman, Usama Younis, Lynnette Kim, Leewen Hsu, Umesh Paudel, Lance A. Parton.
 – Abstract 406
- 62 **Post-NICU Discharge Hypertension (HTN) Risk and Previous Neonatal Acute Kidney Injury**
Margaret M. Pulju, Tazuddin A. Mohammed, Timothy Bunchman, Gail Barker, Leroy Thacker, Karen D. Hendricks-Munoz.
 – Abstract 407
- 63 **Post-Training Knowledge Gaps Following Helping Babies Breathe Training in Northern India**
James W. Thomas, Spalchen Gonbo, Nirupama Laroia.– Abstract 408
- 64 **Is Gentamicin Trough Levels Needed in Term Infants?**
John Ibrahim, Diana Maffei, Amrita Nayak, Shirley Ponnaiya, Nazeeh Hanna.
 – Abstract 409
- 65 **Cardiorespiratory Events in the NICU: Continuous Monitoring and Daily Automated Reporting Versus Intermittent Bedside Documentation**
Nimrod Goldshtrom, Joe R. Isler, Philip G. Grieve, Marilyn Weindler, David Bateman, Mariane Garland, Rakesh Sahni.
 – Abstract 410
- 66 **Neonatal Transport - Focus on Minimizing Lung Injury By Monitoring Tidal Volume**
Sandeep Sadashiv, Jennifer Hesler, Haritha Vellanki, John Emberger, Amy Mackley, Theresa McGreevy, Wendy Sturtz, Robert Locke.
 – Abstract 411
- 67 **Polycythemia Screening in Large for Gestational Age (LGA) Neonates Born To Women Without Diabetes Mellitus**
Kavya Rao, Diana Palanker, Matthew Herman, Philip Roth, Jonathan Blau.
 – Abstract 412
- 68 **Chorioamnionitis Is Associated With Low Vagal Tone and Prolonged Hospitalization in Preterm Infants**
Pratima Toom, Charles Palmer, Kim K. Doheny. – Abstract 413
- 69 **Prolonged Rupture of Membranes Impacts Early Intestinal Microbiome of Premature Infants**
Tristan P. Lindberg, Melissa J. Caimano, Alexander J. Adami, Joerg Graf, Sara Geffert, Adam P. Matson.
 – Abstract 414

- 70 **Perception of Teamwork Amongst NICU Providers**
Albert Kim, Caroline Canning, Janet Lioy, John Chuo.
 – Abstract 415
- 71 **Utility of an NICU Community Outreach Program: A Quality Improvement Survey**
Janet Lioy, John Chuo, Scott Lorch, Thomas Paliga, Jeffrey Gerdes.
 – Abstract 416

**Plenary Session III
 Presentation of Young Investigator Awards**

- 9:00am-10:15am **Overture**
- 9:00am **Presentation of the Young Investigator Awards and the Clinical Case Competition Award**
- 9:15am **Plenary Lecture - Bronchopulmonary Dysplasia: New Insights**
 Namasylyvayam Ambalavanan, MD, University of Alabama at Birmingham, Birmingham, AL
- 10:15am **Break**

**Sunday, March 22, 2015
 Platform Session**

Cardiology

- 10:30am-12:30pm **Maestro B**
 Moderators: Anne Murphy
- 10:30am **Supplemental Intravenous Acetaminophen Does Not Reduce Opioid Use in Infants After Cardiac Surgery**
Lyndsey R. Garbi, Shetal I. Shah. – Abstract 417
- 10:45am **Truncated Protein MyBP-C Allelic Specific Expression in Hypertrophic Cardiomyopathy By Multiple Reaction Monitoring Mass Spectrometry**
Phillip D. Kim, Genaro A. Ramirez-Correa, Anne M. Murphy.
 – Abstract 418
- 11:00am **Assessing Myocardial Function in Persistent Pulmonary Hypertension of the Newborn and Developmental Pulmonary Hypertension: The Role of Tissue Doppler Imaging and Tricuspid Annular Plane Systolic Excursion**
Chalese Richardson, Denise A. Hayes, Cynthia Amirtharaj, Dorota Gruber.
 – Abstract 419
- 11:15am **Palliative Balloon Pulmonary Valvuloplasty for Infants With Unrestrictive Ventricular Septal Defect Or Single Ventricle Associated With Pulmonary Stenosis**
Ramiro W. Lizano Santamaria, Matthew J. Gillespie, Yoav Dori, Jonathan J. Rome, Andrew C. Glatz.
 – Abstract 420
- 11:30am **Endothelin A Receptor Genetic Variant Protects from Persistence of the Ductus Arteriosus**
Hannah Stoops, Lynnette Kim, Alexander Feldman, Usama Younis, Umesh Paudel, Lance A. Parton.
 – Abstract 421
- 11:45am **Clinical Variables and Effect of Ductal Shunting and Inotropes on the SVC Flow in VLBW Infants**
Salma Asad, Yash Shah, M. Roger Kim, Sarita Dhuper.– Abstract 422
- 12:00pm **Effect of Ductus Arteriosus Closure on Photoplethysmographic Signals in Preterm Infants**
Cynthia R. Amirtharaj, Lynn Palmeri, Gideon Gradwohl, Meir Nitzan, Dorota Gruber, David Meyer, Andrew Blaufox, Elena Kwon, Robert Koppel.
 – Abstract 423
- 12:15pm **In-Vitro Cell Specific Gene Delivery in Human Ductus Arteriosus & Aorta Cells**
Pratik Parikh, George Alfieris, Michael Swartz, David Dean.
 – Abstract 424

Developmental Biology

10:30am-12:30pm

Maestro A

Moderators: MaryAnn Volpe

- 10:30am Mechanism of Increased Expression of Caspase-1 Following Hypoxia in the Cerebral Cortex of the Guinea Pig Fetus at Term**
Andy Wang, Jessica V. May-Rabbach, Waseem Akhter, Ioannis Koutroulis, Maria Delivoria-Papadopoulos. – Abstract 425
- 10:45am Combined Nitric Oxide and Vitamin A Regulate Vasculogenesis Pathways During Oxygen-Induced Injury To Neonatal Lung Endothelial Cells**
MaryAnn V. Volpe, Chelsea Douglass, Azeem Sharda, Lucy Yang, Heber C. Nielsen. – Abstract 426
- 11:00am HB-EGF Is Critical To Accelerate Lung Development**
Lauren M. Priolo, Yulian Wang, Tanbir Najrana, Juan R. Sanchez-Esteban. – Abstract 427
- 11:15am Initiation of Electron Transport Activity and a Decrease of Oxidative Stress Occur Simultaneously During Embryonic Heart Development**
Gisela Beutner, George A. Porter. – Abstract 428
- 11:30am The Long Non-Coding RNA Fanci Directs Early Endoderm and Lung Development by Regulating Expression of Foxa2**
Daniel T. Swarr, Michael Morley, Komal Rathi, Michael Herriges, Edward E. Morrissey. – Abstract 429
- 11:45am Prenatal GABA Modulation Prevents Metabolic Derangements in Drug Exposed Fetal Brain**
Samarth Shukla, Mohamed Ahmed, Stephen Dewey. – Abstract 430
- 12:00pm Extension of Joint Involvement Can be Predicted Early in Course of Oligoarticular Juvenile Idiopathic Arthritis Using Gene Expression Profiling**
AnneMarie C. Brescia, Megan M. Simonds, Suzanne M. McCahan, Paul T. Fawcett, Carlos D. Rose. – Abstract 431
- 12:15pm DNA Methylation Differences in Cord Blood Between Term and Preterm Infants Is Associated With Differences in Cell Composition**
Susan M. Braid, Hector Corrada Bravo, Kwame Okrah, Xiumei Hong, Xiaobin Wang. – Abstract 432

Endocrinology

10:30am-12:30pm

Minuet

Moderators: Rachana Shah

- 10:30am Omega-3 Polyunsaturated Fatty Acids Alter Differentiation and Inflammatory Signaling in Human Adipocytes**
Yasmeen Midgette, Rachana Shah. – Abstract 433
- 10:45am Antioxidants Reverse Obesity-Induced Transcriptomic Changes in Oocytes**
Tami Stuart, Kathleen O'Neill, Monica Mainigi, Rebecca Simmons. – Abstract 434
- 11:00am The Use of Glucagon in the Treatment of Congenital Hyperinsulinism**
Juan Jose Lado, Stephanie Givler, Diva D. De Leon. – Abstract 435
- 11:15am Y-Chromosome Material and Gonadal Pathology in Turner Syndrome**
Jacquelyn A. Hatch-Stein, Andrea Kelly, Kamini Anbil, Daniel Todd Katz, Vaneeta Bamba. – Abstract 436
- 11:30am Disruption of Pancreatic Fibroblast Growth Factor Receptor 1 (Fgfr1) Signaling Impairs Glucose Homeostasis in Female Mice**
Christine T. Ferrara, Po Man A. Suen, Andrea V. Rozo, Mira M. Sachdeva, Kathryn C. Claiborn, David N. Groff, Doris A. Stoffers. – Abstract 74

- 11:45am Height Velocity Is Reduced in Children and Adolescents with Down Syndrome**
Jacquelyn A. Hatch-Stein, Andrea Kelly, Mary Pipan, Waynitra C. Hall, Virginia A. Stallings, Babette S. Zemel. – Abstract 438
- 12:00pm Autism Spectrum Disorder Increases the Risk of Obesity and Metabolic Comorbidities**
Katherine Shedlock, Apryl Susi, Gregory Gorman, Elizabeth Hisle-Gorman, Christine Erdie-Lalena, Cade Nylund. – Abstract 439
- 12:15pm Ocular Complications in Children With Diabetes Mellitus**
Megan M. Geloneck, Brian J. Forbes, James Shaffer, Gil Binenbaum. – Abstract 440

Infectious Disease II

10:30am-12:30pm

Concerto AB

Moderators: Shetal Shah

- 10:30am Blood Culture Collection Practice and Yield At a Tertiary Pediatric Centre Prior To Implementation of an Evidence-Based Blood Culture Protocol**
Michelle S. Lee, Jeffrey Pernica, Deborah Yamamura, David Goldfarb. – Abstract 441
- 10:45am Pediatric Multiplex Pcr Respiratory Testing: What Is It Telling Us?**
Daniel Ruderfer, Andre P. Rebaza, Leonard R. Krilov, Rose Calixte. – Abstract 442
- 11:00am Rapid Molecular Blood Culture Identification (BCID) Can Improve Antimicrobial Stewardship for Children With Bacteremia**
Sophie Katz, Jennifer Vodzak, Alan T. Evangelista, Jeffrey J. Cies, Sarah S. Long. – Abstract 443
- 11:15am Reduction in New York State Infant Pertussis Rates Associated with the 2013 Neonatal Pertussis Prevention Act**
Shetal Shah, Heather L. Brumberg. – Abstract 444
- 11:30am Use of Azithromycin as Anti-inflammatory Agent in Hospitalized Children with Acute Exacerbation of Asthma**
Suhas Ganguli, Andrea Heras, Tarek Zetoune, Shirley Pinero-Bernardo, Dakshayani Guttal, Partha Chatterjee, Susana Rapaport, Lily Lew, Esra Fakioglu. – Abstract 445
- 11:45am Disparities in HPV Vaccine Series Completion for Males**
Atu Agawu, Alexandra L. Hanlon, Alison M. Buttenheim, Lihai Song, Alexander G. Fiks, Kristen A. Feemster. – Abstract 446
- 12:00pm Optimum Duration of Empirical Antibiotic Therapy (EAT) for Suspected Sepsis in Neonates from NICU : A 5-Year Retrospective Study**
Shravan Gunde, Arpit Agarwal, Frederick Ogwara, Peter Homel, Maria L. Escobar Hoyos, Panayot Filipov. – Abstract 447
- 12:15pm Pilot Study of Dornase Alfa (Pulmozyme) Therapy for Acquired Ventilator Associated Pulmonary Infection (VAPI) in Preterm Infants in the Neonatal Intensive Care Unit (NICU)**
Melissa Scala, Judith Palafoutas, Deborah Hoy, Maria Bautista, Kabir M. Abubakar. – Abstract 448

- 10:30am-12:30pm** **Aria A**
Moderators: Sara DeMauro
- 10:30am Risk of Inflammatory Bowel Disease (IBD) Following Childhood Antibiotic Exposure: A Systematic Review**
Julie Gilbert, Peter F. Belamarich. – Abstract 449
- 10:45am Anthropometric Trends in Infants Born \leq 28 Weeks Gestation from 1997-2012**
Nicholas Wells, Katherine Ottolini, Theophil Stokes, Cara Olsen, Alan Spitzer, Carl Hunt. – Abstract 450
- 11:00am Maternal Obesity Is Associated with Increased Adiposity in Appropriate for Gestational Age Term Infants**
Kristin L. Olsen, Shreyans Bengani, Melissa Vega, Tao Wang, Maureen J. Charron, Mamta Fuloria. – Abstract 451
- 11:15am Quantifying the Economic Burden of Neonatal Illness on Families of Preterm Infants in the U.S. and Canada**
Jessica K. Schiffman, Dmitry Dukhovny, Meredith Mowitz, Haresh Kirpalani, Wenyang Mao, Robin Roberts, Amy Nyberg, John Zupanic. – Abstract 452
- 11:30am Why do Children with Severe BPD not attend Neonatal Follow Up Care? - Parental Views of Barriers**
Jennifer M. Handzel, Nicole Poupirt, Judy Bernbaum, Jo Ann D'Agostino, Marsha Gerdes, Casey Hoffman, Hallam Hurt, Haresh Kirpalani, Sara B. DeMauro. – Abstract 453
- 11:45am Agreement of Developmental Age with Chronologic and Adjusted Age of Former Preterm Infants After 2 Years**
Jordan S. Kase, Sema Gogcu. – Abstract 454
- 12:00pm Health Literacy in Parents of Premature Infants: Distribution and Change During NICU Admission**
Elizabeth M. Enlow, Danielle Foy, Laura H. Rubinos, Megay Gray, Nicolas Bamat, Soraya Abbasi, Scott A. Lorch. – Abstract 455
- 12:15pm If Infant Does Not Appear Right: He May Not Be Able To Hear Either**
Jaskiran Ranu, Rupinder Kaur, Rubia Khalak. – Abstract 456

Neonatology - Pulmonary/Ventilation

- 10:30am-12:30pm** **Overture**
Moderators: Vineet Bhandari
- 10:30am Optimal Target Oxygen Saturation (SpO₂) in Term Lambs with Meconium Aspiration Syndrome (MAS) and Persistent Pulmonary Hypertension of the Newborn (PPHN)**
Munmun Rawat, Praveen Chandrasekharan, Sylvia Gugino, Carmon Koenigsknecht, Daniel Swartz, Bobby Mathew, Jayasree Nair, Satyan Lakshminrusimha. – Abstract 457
- 10:45am Ventilation At Sub-Dead Space Tidal Volumes: A Bench Study**
Edward H. Hurley, Martin Keszler. – Abstract 458
- 11:00am Does a Prototype High Frequency Nasal Cannula Device Enhance Carbon Dioxide Elimination Compared To Bubble CPAP?**
Kabir M. Abubakar, Morarji Peesay. – Abstract 459
- 11:15am Utility of Exhaled Breath Condensate in Predicting Bronchopulmonary Dysplasia**
Elizabeth Yen, Barry I. Weinberger, Robert J. Laumbach, Anna M. Vetrano, Maya R. Ramagopal. – Abstract 460
- 11:30am High Frequency Oscillatory Ventilation: The Effects of Hyperoxia and Biophysical Stress on Cultured Human Airway Epithelial Cells**
Anja K. Mowes, Beatriz E. de Jongh, Yan Zhu, Timothy J. Cox, Thomas H. Shaffer. – Abstract 461

- 11:45am Delivery Room CPAP - Outcomes of a Quality Improvement Initiative**
Sandeep Sadashiv, Robert Locke, Haritha Vellanki, John Emberger, Robin Maguire, Gina Moore, John Stefano. – Abstract 462
- 12:00pm Inhaled Nitric Oxide (iNO) in Early Pulmonary Hypertension (PH) and Hypoxemic Respiratory Failure (HRF) in Preterm Infants**
Praveen Chandrasekharan, Vasanth H.S. Kumar, Munmun Rawat, Satyan Lakshminrusimha. – Abstract 463
- 12:15pm Prophylactic Indomethacin Is Not Associated with a Reduced Risk of BPD in Extremely Preterm Infants**
E. Jensen, K. Dysart, M. Gantz, R. Higgins, D. Kendrick, M. Keszler, M. Laughon, B. Poindexter, B. Stoll, M. Walsh, B. Schmidt. – Abstract 464

Nephrology

- 10:30am-12:30pm** **Rhapsody**
Moderators: Beatrice Goilav
- 10:30am Serious Gaming in Nephrology: Development of an Online Virtual Peritoneal Dialysis Simulator**
Aleksandra Olszewski, Traci Wolbrink, Daniel Hames, Mignon McCulloch, Deborah Stein, Sharon Su, Jeffrey Burns. – Abstract 465
- 10:45am Estimation of GFR (eGFR) in Preterm Infants (<31 Wks) by Using Serum Creatinine and Cystatin C**
Parvesh Mohan Garg, Ravisankar Srikant, Scott MacGilvray, Shekhawat Prem, Guillermo Hidalgo. – Abstract 466
- 11:00am Hypercalciuria and Nephrolithiasis Caused by Monoallelic Variants in the CYP24A1 Gene**
Daniel Mecozzi, Timothy J. Moss, Ryan Noss, Susan Kirwin, Kathy M. Vnette, Danielle Stubbolo, Joshua J. Zaritsky. – Abstract 467
- 11:15am MicroRNAs in Nephrotoxic Serum Nephritis**
Lauren Becton, Chaim Putterman, Olivier Loudig, Andrew Ramnauth, Rahul Pawar, Miguel Brown, Beatrice Goilav. – Abstract 468
- 11:30am Immunogenicity of Human Papillomavirus Recombinant Vaccine (Gardasil®) in Pediatric Patients with Kidney Disease**
D. Nelson, A. Neu, S. Amaral, D. Batsky, J. Fadrowski. – Abstract 469
- 11:45am Urinary Biomarkers and Epigenetic Dysregulation Associated With Increased Risk of CKD in Maternal Caloric-Restricted Rats**
Natalie Uy, Howard Slomko, Fabien Delahaye, Hye Heo, Kimberly Reidy, Francine Einstein. – Abstract 470
- 12:00pm Do Infants in the Neonatal Intensive Care Unit Diagnosed With Urinary Tract Infection Need a Voiding Cystourethrogram?**
Dustin D. Flannery, Erik Brandsma, Judy Saslow, Amy Mackley, David A. Paul, Zubair H. Aghai. – Abstract 471
- 12:15pm Comparison of AKIN and pRIFLE Criteria in Diagnosing Acute Kidney Injury in Very Low Birth Weight Infants**
Ankana Daga, Fredrick Dapaah-Siakwan, Sharina Rajbhandari, Casandra Arevalo, Agnes Salvador. – Abstract 472

Faculty

Ruth Abaya, MD, MPH
Children's Hospital of Philadelphia
Philadelphia, PA

Zubair Aghai, MD
Thomas Jefferson University
Philadelphia, PA

Mohamed Ahmed, MD, PhD
Cohen Children's Medical Center of
New York
Manhasset, NY

Oleh Akchurin,
Montefiore Medical Center, Albert
Einstein College of Medicine
Bronx, NY

Namasivayam Ambalavanan, MD
University of Alabama at Birmingham
Birmingham, AL

Sanjiv Amin, M.D.
Strong Memorial Hospital
Rochester, NY

Emilio Arteaga-Solis, M.D., PhD
Columbia University Medical Center
New York, NY

Praveen Ballabh, MBBS
Westchester Medical Center-NY
Medical College
Valhalla, NY

Hamid Bassiri, MD, PhD
Children's Hospital of Philadelphia
Philadelphia, PA

Cynthia Bearer, MD, PhD, FAAP
Univ of Maryland Hosp for Children
Baltimore, MD

Kirsten Bechtel, MD
Yale New Haven Children's Hospital
New Haven, CT

Joseph Bliss, MD, PhD
Women and Infants Hospital
Providence, RI

Rachel Boykan, MD
Stony Brook Children's Hospital
Stony Brook, NY

Kenneth Bromberg, MD, FAAP
The Brooklyn Hospital Center
Brooklyn, NY

Heather Brumberg, MD, MPH, FAAP
The Regional Perinatal Center at
Maria Fareri Childrens Hospital at
Westchester Medical Center
Valhalla, NY

Karen Carpenter, MD, FAAP
Inova Medical Group
Falls Church, VA

Helen Christou, MD, FAAP
Brigham and Women's Hospital
Boston, MA

Esther Chung, MD MPH FAAP
Jefferson Medical College/Nemours
Philadelphia, PA

Mario Cruz, MD
St. Christopher's Hospital for Children
Philadelphia, PA

James Cummings, M.D.
The Children's Hospital at Albany
Medical Center
Albany, NY

Christiane Dammann, MD
Tufts University/NeoPeri
Boston, MA

Maria Delivoria-Papadopoulos, MD,
FAAP
Drexel University College of Medicine
Philadelphia, PA

Sara DeMauro, MD, MSCE
The Children's Hospital of Philadelphia
Philadelphia, PA

Joseph Domachowske, MD
SUNY Upstate Medical University
Syracuse, NY

Susan Duffy, M.D.
Brown University
Providence, RI

Gary Emmett, MD FAAP
Nemours Foundation/Thomas Jefferson
University
Philadelphia, PA

Susan Feigelman, MD
University of Maryland
Baltimore, MD

John Giuliano, Jr., MD FAAP
Yale University School of Medicine
New Haven, CT

Elizabeth Goldmuntz, MD FAAP
Children's Hospital of Philadelphia/
PedsCardio
Philadelphia, PA

Jay Greenspan, M.D.
Jefferson Medical College
Philadelphia, PA

Patricia Hicks, MD FAAP
The Childrens Hosp of Philadelphia
Philadelphia, PA

Deshmukh Hitesh, M.D., PhD
Cincinnati Children's Hospital Medical
Center
Cincinnati, OH

Yamini Howe, MD
Massachusetts General Hospital
Lexington, MA

Steven Kernie, M.D.
Columbia University Medical Center
New York, NY

Martin Keszler, MD
Women and Infants Hospital
Providence, RI

Edmund La Gamma
Maria Fareri Children's Hospital at
Westchester Medical Center, New York
Medical College
Valhalla, NY

Amit Lahoti, MBBS
Cohen Children's Medical Center, North
Shore LIJ Health System
Lake Success, NY

Satyan Lakshminrusimha, M.D.
Women and Children's Hospital of
Buffalo,
Buffalo, NY

Danielle Laraque, MD
Maimonides Infants and Children's
Hospital of Brooklyn
Brooklyn, NY

Corinne Leach, M.D., Ph.D.
Children's Hospital of Buffalo
Buffalo, NY

An Massaro, MD
Children's National Medical Center
Washington, DC

Maria McColgan, MD
St. Christopher's Hospital for Children
Philadelphia, PA

Lynne Mofenson, MD
Eunice Kennedy Shriver National
Institute of Child Health and Human
Development
Rockville, MD

Anne Murphy, MD
Johns Hopkins University School of
Medicine
Baltimore, MD

James Padbury, M.D.
Brown Medical School/Women &
Infants Hospital
Providence, RI

David Paul, M.D.
Baylor College of Medicine/Texas
Children's
Houston, TX

Ellen Perrin, MD
Tufts Medical Center
Boston, MA

George Porter, M.D., Ph.D.
University of Rochester Medical Center
Rochester, NY

George Porter, M.D., Ph.D.
University of Rochester Medical Center
Rochester, NY

George Porter, M.D., Ph.D.
University of Rochester Medical Center
Rochester, NY

Gloria Pryhuber, MD FAAP
University Of Rochester Medical Center
Rochester, NY

Robert Rapaport, M.D.
Mount Sinai School of Medicine
New York, NY

John Rausch, MD FAAP
Columbia University Medical Center
Yonkers, NY

Steven Rogers, MD FAAP
Connecticut Children's Medical Center
Hartford, CT

Leticia Ryan, MD MPH
Johns Hopkins University School of
Medicine
Baltimore, MD

Richard Schanler, MD FAAP
Cohen Children's Medical Center of
New York
New Hyde Park, NY

Shetal Shah, MD FAAP
Maria Fareri Children's Hospital, New
York Medical College
Great Neck, NY

Eugene Shapiro, MD FAAP
Yale University Dept of Pediatrics
New Haven, CT

Sharon Smith, MD FAAP
Connecticut Children's Medical Center
Hartford, CT

Robert Squires, MD FAAP
Children's Hospital of Pittsburgh
Pittsburgh, PA

Laurie Steiner,
University of Rochester
Rochester, NY

Marcia Van Vleet, MD
Women and Infants' Hospital of Rhode
Island
Providence, RI

Susan Vannucci, Ph.D.
Weill Cornell Medical College
New York, NY

MaryAnn Volpe, M.D.
New England Medical Center
Boston, MA

Melanie Wellington, MD
Univ of Rochester
Rochester, NY

Joshua Zaritsky, MD
AI duPont Hospital for Children
Wilmington, DE

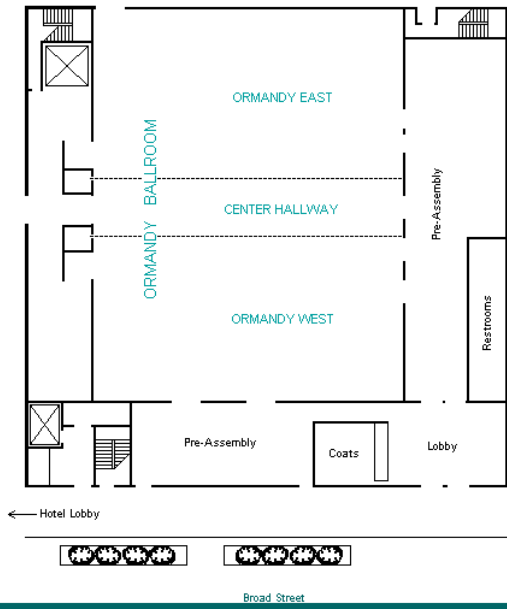
Abstract Presenter Index

Index numerals refer to the Abstract number, not the page number.
Only Presenting Abstract Authors are included in the Index.

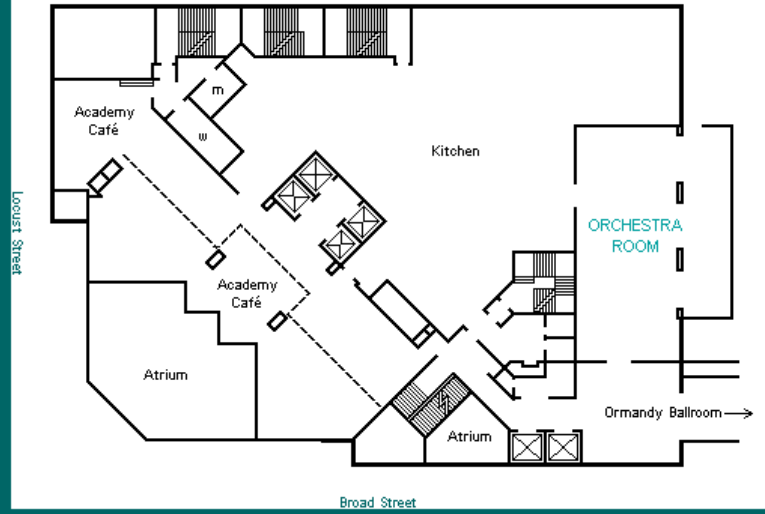
Abao, Anne Marie	239	Freibott, Christina	134	Lin, Yue	278	Rizzo, Andrew	277
Abdelgadir, Dalal	49	Fu, Linda	363	Lindberg, Tristan	414	Rogers, Steven	208
Abdelrahman, Khaled	176	Fugarolas, Keri	138	Line, Elaine	294	Ron, Nitin	293
Aboudi, D.	89	Furman, Adrian	389	Lingan, Jayson	16	Rong, Qi	321
Abreo, Kathleen	93	Gandhi, Chintan	140	Lioy, Janet	23, 24, 195, 416	Roy, Sani	87
Abubakar, Kabir	129, 459	Gandhi, Shiv	286	Liu, Jianghong	44	Ruderfer, Daniel	178, 335, 442
Achebe, Chidi	372	Ganguli, Suhas	445	Lizano Santamaria, Ramiro	420	Sadashiv, Sandeep	411
Ackermann, Amanda	227	Garbi, Lyndsey	417	Ly, Eric	212	Said, Mariam	70, 301
Afzal, Bushra	259	Garg, Parvesh Mohan	466	Madore, Laura	173	Saidinejad, Mohsen	280
Agawu, Atu	446	Gault, Allison	100	Mahendraraj, Krishnaraj	323	Sait, Sameer	324
Agyepong, Akosua	62	Gawel, Marcie	204	Malaeb, Shadi	261, 262	Saleem, Bushra	209
Ajayi, Samuel	115, 303	Gayen nee Betal, Suhita	32, 183	Malcolm, Sharyn	6	Salisbury	233
Alerhand, Stephen	276	Geloneck, Megan	440	Malik, Kristina	8	Samango-Sprouse, Carole	33
Alexander, Jennifer	267	Gilbert, Julie	449	Mallapaty, Anu	252	Samuels-Kalow, Margaret	285
Alphonso, Aimee	188	Gingold, Janet	390	Mandhani, Nandita	216	Sandell, Angela	298
Aly, Ahmed	15	Giri, Priyadarshani	61	Manschreck, Christopher	163	Sanders, Jennifer	240
Aly, Safwat	14	Gogcu, Sema	317	Maraynes, Megan	243	Sangwan, Pravesh	361
Amberson, Michael	307	Goilav, Beatrice	468	Mariappan, M.	338	Sarhis, Jennifer	84
Amin, Rasheda	110	Goldstrom, Nimrod	410	Mashiak, Christopher	244	Savage, Jillian	206
Amirtharaj, Cynthia	423	Goldstein, Justin	316	Mathew, Smitha	103	Scala, Melissa	448
Arena, Julia	56	Gorgos, Andreea	71	Matterson, Heideh	131, 132	Scheible, Kristin	256
Arumugam, Maheswari	130	Gottesman, Lena	111	Maxwell, Abigail	400	Scheid, Annette	166
Asad, Salma	422	Graham, Krishika	356	McGuirl, Jennifer	68	Schiffman, Jessica	452
Astoria, Mark	58	Gray, Megan	102	McLaren, Son	205	Schleffman, Amanda	384
Avulakunta, Indirapriya Darshini	271	Hailegebriel, Tebbabe Degefe	201	McLean, Kaitlin	64, 273	Schwabenbauer, Kathleen	52
Badaki-Makun, Oluwakemi	291	Hanauske-Abel, Hartmut	327	McMahon, Kimberly	283	Sengupta, Shaon	343
Bader, Amanda	143	Handzel, Jennifer	41, 57, 453	Mecozzi, Daniel	467	Seufert, Caleb	164
Bagdure, Dayanand	88, 339	Hanley, Patrick	81	Mehlman, Mary	365	Sewell, Elizabeth	46
Bailey, Sean	121, 214	Hansen, Caitlin	248	Mehra, Kashish	170	Shah, Ankoor	376
Bakare, Olubunmi	59	Harrison, Victor	82	Memon, Naureen	296	Shah, Birju	162, 270
Balany, Jherna	27, 122	Hatch-Stein, Jacquelyn	436, 438	Mendelson, Meryl	12	Shah, Kshiti	94
Bamanikar, Amruta	142	Hauptman, Marissa	156	Mercer, Judith	118, 119	Shah, Rachana	433
Barayev, Vladimir	367	Hazrati, Sahel	202	Michel, Jeremy	366	Shah, Shetal	328, 444
Battu, Subha	351, 352	Henry, M.	185, 346	Miller, Jonathan	383	Shaikh, Huma	190
Bearer, Cynthia	217, 218	Henry, Michael	135	Mintzer, Jonathan	222	Shapiro, Natasha	403
Benjelloun, Rachid	63	Herriman, Maguire	8	Miodovnik, Amir	38	Shaw, Jana	90
Berkelhamer, Sara	126, 127	Hicar, Mark	329	Mirchandani, Dipti	348	Shedlock, Katherine	439
Bertoni, C. Briana	274	Hill, Alexandra	10	Mitra, Anjali	289	Sheen, Winston	398
Beus, Jonathan	165, 333	Hodock, Katherine	106	Mitra, Souvik	299	Sheldrick, Radley	39, 40, 236
Bidiwala, Aneela	345	Hoffman, Laurie	305	Moerder, Scott	101	Shukla, Ankita	320
Blancha, Victoria	17	Hoffman, Suma	117, 232, 258	Mogilner, Leora	371	Shukla, Khushbu	306
Blatt, Lauren	347	Holland, Sabina	330	Monaco-Brown, Meredith	167	Shukla, Samarth	430
Braid, Susan	253, 432	Hoplamazian, Anna	180	Morparia, Kavita	193	Skarzynska, Malgorzata	369
Brescia, AnneMarie	431	Hulfish, Erin	153	Mowes, Anja	461	Skoda-Mount, Emily	354
Brezinski, Donna	112	Hurley, Edward	458	Murthy, Swati	123	Sloane, Amy	336
Buhlig, Stephanie	99	Ibrahim, John	409	Nelson, D.	469	Smith, Kyle	34
Cai, Amanda	19, 20	Isaza, Natalia	136, 264	Nino, Gustavo	181	St. Peter, Deidre	114, 221
Carey, Alison	304	Isler, Joseph	263	Nitka, Sarah	402	Stokes, Adia	50
Chadha, Kunal	275	Ivanova, Larisa	251	Notartomaso, Ashley	241	Stoops, Hannah	421
Chandran, Arjun	318	Jacobs, Amanda	1	Nugent, Colleen	210	Stuart, Tami	75, 434
Chandrasekharan, Praveen	220, 463	Jensen, E.	128, 230, 399, 464	Nunez, Jeanne	396	Stubblefield, Sam	377
Chen, Bai Yi Ted	152	Ji, Xiaopeng	9	O'Connor, M.	51	Sue, Paul	332
Chen, Victoria	370	Jimenez, Manuel	35, 159	O'Dea, Carol Lynn	96	Swarr, Daniel	429
Chicaiza, Henry	231	Kabali, Hilda	250	O'Donnell, Elizabeth	66	Swenson, Bryan	290
Cipko, Erin	137	Kaipa, Santosh	342	Oberie, Megan	80	Taha, Dalal	308
Colaneri, Natalie	2, 43, 238	Kaj, Batul	368	Odackal, Namrita	334	Tchacomas, Alexis	3
Collins, Amelie	254	Kalhan, Tamara	224	Olsen, Kristin	451	Thomas, James	408
Connelly, Alena	207	Kallem, Stacey	95	Olsewski, Aleksandra	465	Thomson, Tina	385
Connolly, Emilia	25	Kanner, Lauren	83	Onyewuchi, Uche	2, 387	Titchen, Kanani	198
Cortes, Sara	281	Karagiannis, Tom	7	Orrock, Janet	257	Tiyyagura, Gunjan	189
Costa, Joanna	302	Karim, Qais	404	Oruwariye, Tosan	4	Toom, Pratima	413
Courchia, Benjamin	397	Kase, Jordan	454	Osgood, Peter	341	Topiol, Emmanuelle	172, 199
Cui, Naixue	237	Kashyap, Arun	405	Palmeri, Lynn	18	Tracy, Megan	229
Curtin, Mary	108	Katz, Sophie	443	Panagos, Patoula	177	Tran, Katie	391
Daga, Ankana	60, 472	Kaushik, Shubhi	325	Panda, Sanjeet	120	Troncales, Alfred	375
Dalembert, George	392	Kaza, Poonam	394	Pandit, Paresh	226	Tucker, Elizabeth	161
Dapaah-Siakwan, Fredrick	395	Kelly, Barbara	380	Paramaguru, Sureka	378	Uy, Natalie	470
Dapul, Heda	30	Kelly, Shareen	382	Parikh, Pratik	268, 424	Vaidya, Poorva	337
Daswani, Dina	149	Kerson, Abigail	191	Parravicini, Elvira	313	VanOrden, Zoe	125
Davidson, Jessica	175	Kersten, Hans	357	Patankar, Nikhil	67	Varghese, Sarah	97
Dela Cruz, Jeffrey	242	Kiely, Bridget	36	Patel, Milani	197	Vellanki, Haritha	462
DeLago, Cynthia	379	Kim, Albert	415	Patel, Nishit	150	Vemuri, Pranavi	288
Demczko, Matthew	21	Kim, Juhye	168	Patel, Priya	381	Vera, Juliana	11
Derespina, Kim	104	Kim, Lynnette	55	Patel, Sneha	279	Villacres, Sindy	26
Derrick, Kristina	76	Kim, Phillip	418	Paterno, Christopher	355	Villanueva, Hazel	272
DiMario, Francis	373	King, Ronnelle	314	Patil, Uday	169	Vinci, Alexandra	133
Dodge, Jessica	113	Klein, Jason	78	Paudel, Umesh	179	Vittorino, Roselle	269
Donnelly, Katie	154	Kopa, Justin	5	Pearlman, Stephen	223	Volpe, MaryAnn	426
Doyle, Josel	266	Kovatis, Kelley	225, 265	Perinpanathan, Kirishanth	292	Waldman, Lindsey	388
Dumpa, Vikramaditya	124, 184	Kratimenos, Panagiotis	215, 228, 340	Perrin, Ellen	235	Wales, Danielle	247
Edwards, Noelle	13	Kreider, Amanda	146	Pham, Tammy	147, 148	Wang, Andy	425
Ekambaram, Maheswari	139	Kremen, Jessica	85	Pierce, Richard	29	Wang, James	350
Elamin, Batoul	310, 311	Krevskaya, Anna	349	Pinto, Jamie	158	Wang, Xiaobin	91, 92
Elitsur, Noeet	109	Kudrick, Necla	72	Plymire, Christopher	22	Ware, Anita	255
Elitsur, Rotem	249, 353	Kushnir, Alla	393	Polam, Sharadha	322	Weingarten, Anna	151
Ellen, Stacy	160	Kusulas, Matthew	200	Pompa, Anthony	211	Weller, Melanie	284
Emborsky, Mary	287	Lado, Juan	435	Porter, George	428	Wells, Nicholas	450
Enlow, Elizabeth	362, 455	Lafferty, Margaret	282	Priolo, Lauren	427	Wheaton, Taylor	28
Ennis, Christine	174	Lambert, Richard	31	Pulju, Margaret	407	Williams, Monica	300
Erdei, Carmina	219	Langhan, Melissa	192	Purice, Daniela	79	Wiltsie, Laura	331
Escobar Hoyos, Maria	447	Lau, Christine	326	Rajbhandari, Sharina	171	Woodward, Mary	309
Farrell, Caitlin	186	Laverdiere, Michele	37	Rallabandi, Srujana	54, 213	Xi, Dong	297
Farri, Folashade	295	Ledesma, Michele Alexandra	234	Ramirez-Tovar, Maria	144	Yang, Guang	401
Feldman, Alexander	406	Lee, Diana	386	Ranu, Jaskiran	456	Yen, Elizabeth	460
Fernandez, Cristina	245	Lee, Michelle	441	Rao, Anoop	358	Younis, Usama	344
Ferrara, Christine	73, 74	Leone, Nicole	360	Rao, Kavya	412	Zeits, Lynn	45, 48, 194
Fieldston, Evan	105	Leong, Melanie	260	Rapaport, Robert	437		
Fiks, A.	155, 359	Levinson, Michelle	319	Rausch, John	157		
Flannery, Dustin	47, 65, 471	Levit, Orly	69	Rawat, Munmun	457		
Fortin, Kristine	187	Leviter, Julie	196	Reid, Brittany	312		
Frederico, Nick	145	Lim, Muoy	203	Rhein, Lawrence	182		
Freiberger, Christina	141	Lin, Elaine	246	Richardson, Chalese	419		

Notes

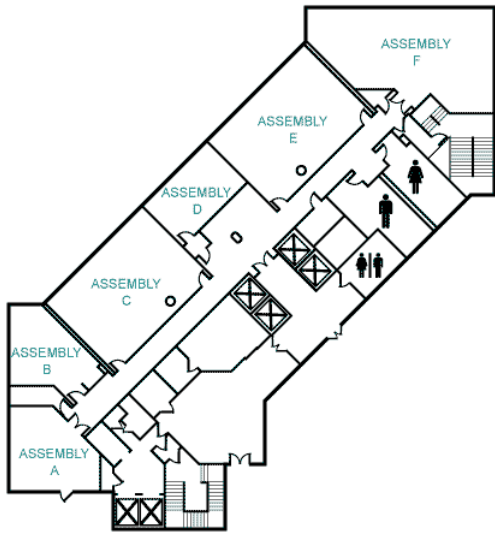
DOUBLETREE HOTEL PHILADELPHIA - LOBBY LEVEL



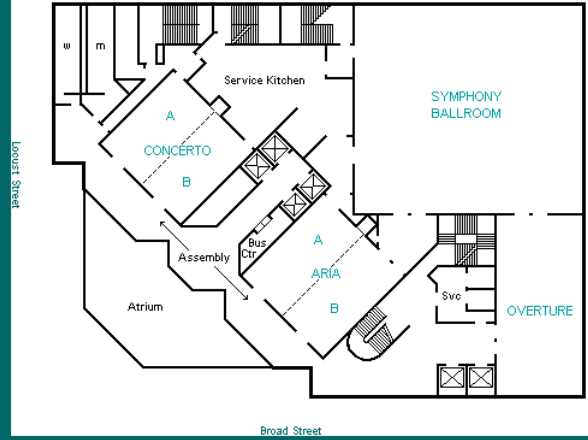
DOUBLETREE HOTEL PHILADELPHIA - SECOND FLOOR



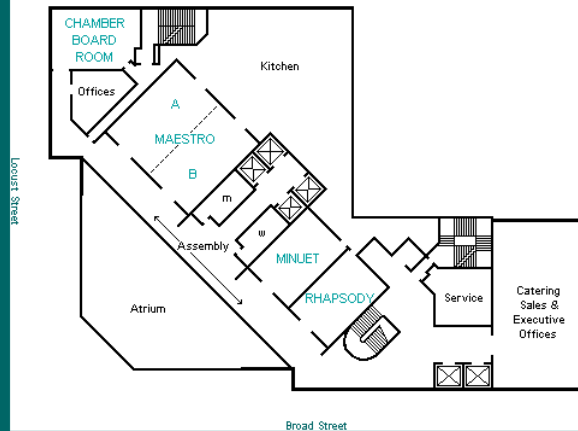
DOUBLETREE HOTEL PHILADELPHIA - FIFTH FLOOR



DOUBLETREE HOTEL PHILADELPHIA - THIRD FLOOR



DOUBLETREE HOTEL PHILADELPHIA - FOURTH FLOOR



SAVE THE DATES!

28TH Annual ESPR Meeting
March 10 - 13, 2016
Philadelphia, PA



ESPR Program Office
3400 Research Forest Drive, Ste. B-7
The Woodlands, TX 77381
Email: espr-info@aps-spr.org
Phone: 281-419-0052
Web: www.aps-spr.org/ESPR

